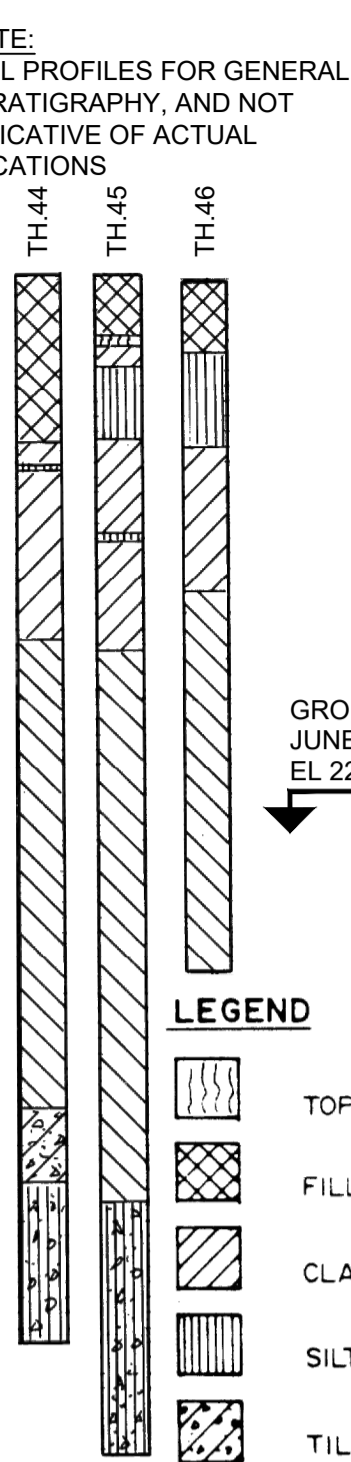
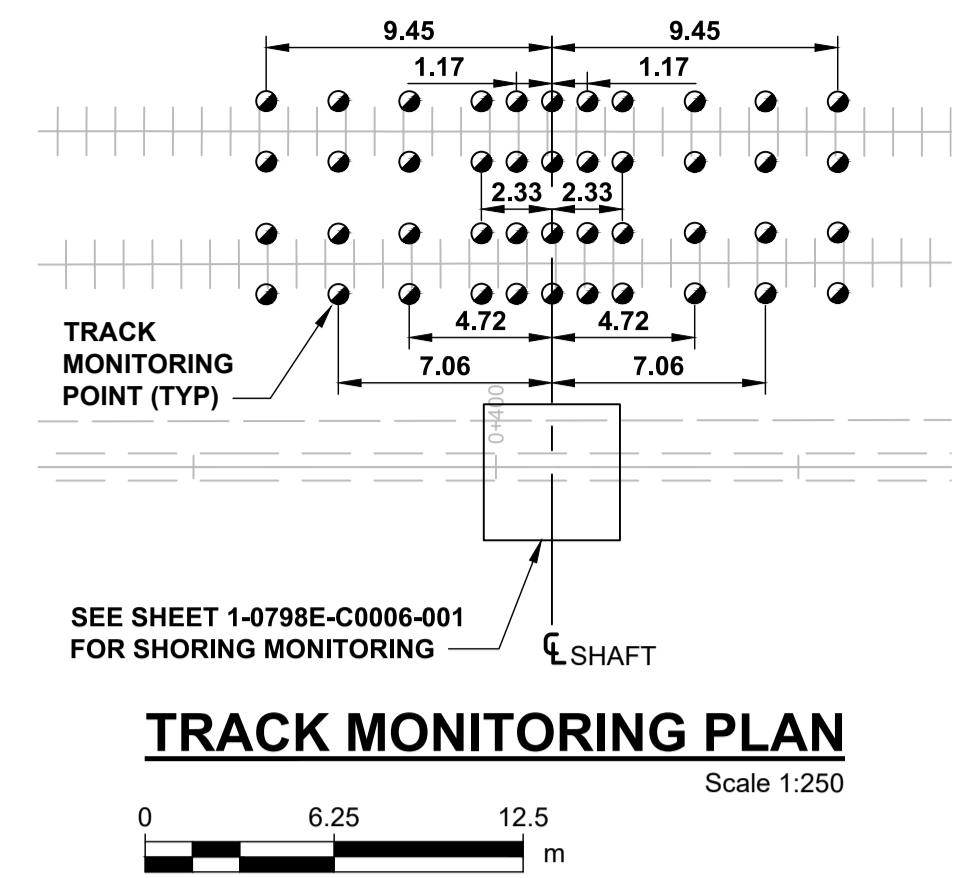
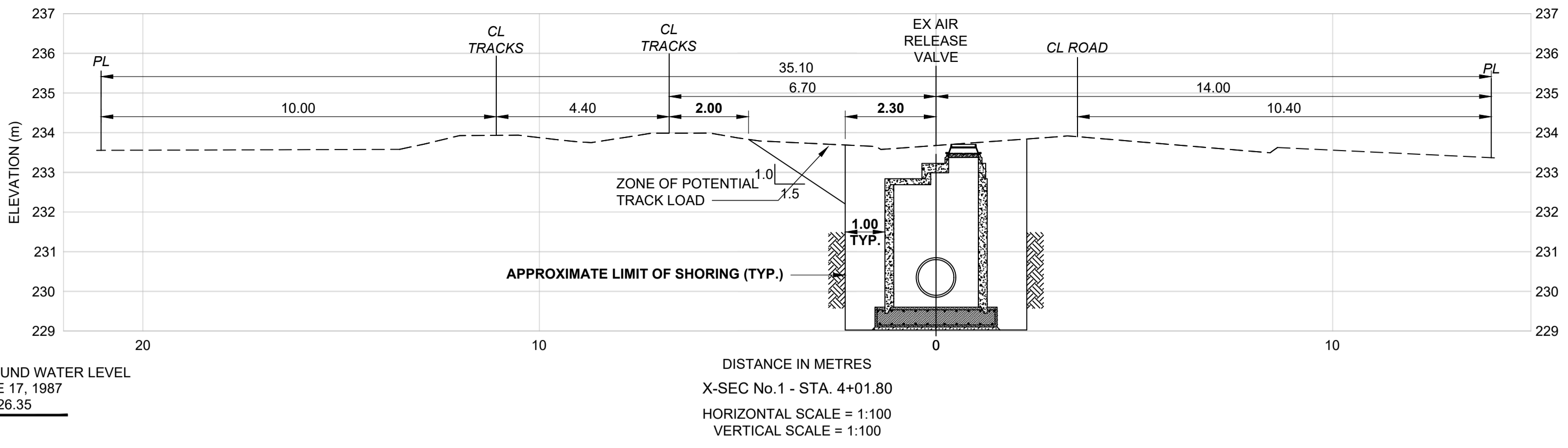


NOTE:
SOIL PROFILES FOR GENERAL STRATIGRAPHY, AND NOT INDICATIVE OF ACTUAL LOCATIONS



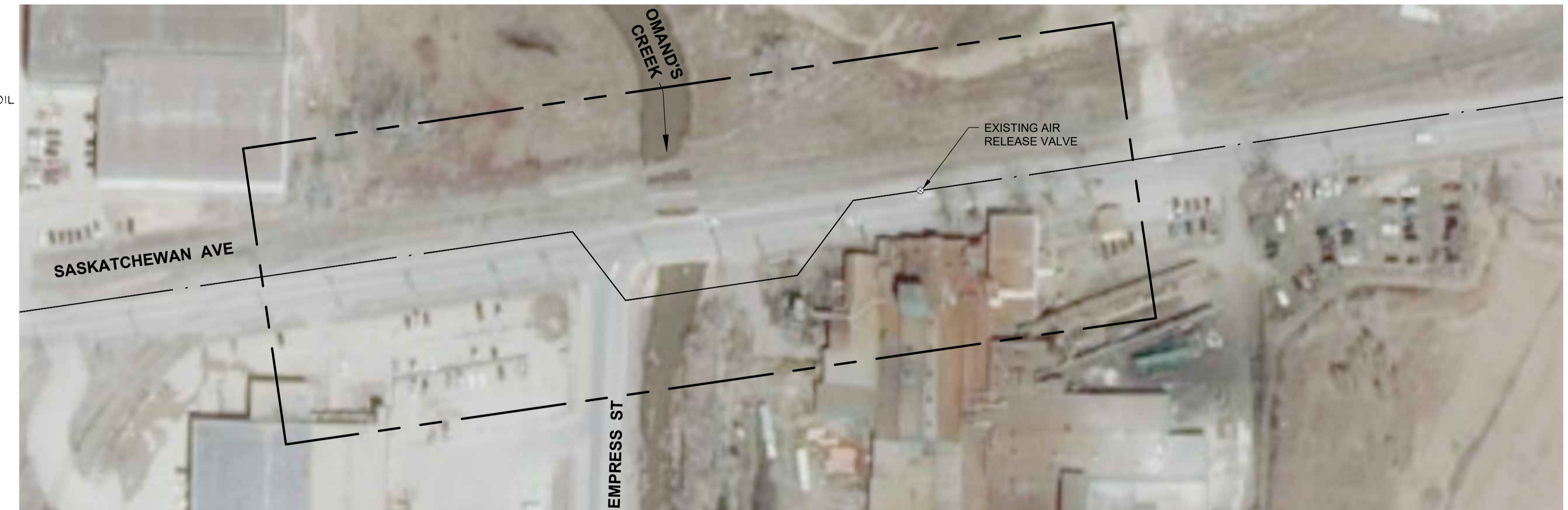
LEGEND

- TOPSOIL
- FILL
- CLAY
- SILT
- TILL



TRACK MONITORING PLAN

Scale 1:250
0 6.25 12.5 m



SITE PLAN

Scale 1:1000
0 25 50 m

RAIL CROSSING NOTES:

RAIL MILEAGE AND SUBDIVISION: MILE 0.35 SASKATCHEWAN AVE. LEAD, OFF MILE 0.91 LA RIVIERE SUBDIVISION

MUNICIPAL DESCRIPTION OF ADJACENT PROPERTIES: SASKATCHEWAN AVE. 70m EAST OF EMPRESS STREET

NAME OF PIPELINE OWNER: CITY OF WINNIPEG, WATER AND WASTE DEPARTMENT

CONTENTS TO BE HANDLED: POTABLE WATER

MAXIMUM OPERATING PRESSURE: 550 KPa

MAXIMUM OPERATING TEMPERATURE: 20°C

MINIMUM OPERATING TEMPERATURE: 4°C

PIPING MATERIALS: CARRIER 900mm

NOMINAL DIAMETER: 1080mm

OUTSIDE DIAMETER: PRESTRESSED CONCRETE CYLINDER PIPE

MATERIAL: AWWA C301 (L) CLASS 14

SPECIFICATION AND GRADE:

WALL THICKNESS: 85mm

TYPE OF JOINT: RUBBER GASKET/BELL AND SPIGOT

COATING: NA

BURY:

BASE OF RAIL TO TOP OF PIPE 3.02m

NOT BENEATH TRACKS NA

ROADWAY DITCHES NA

JACKING/RECEIVING PITS 5.0m

EXTENT OF CASING MEASURED PERPENDICULAR TO CENTERLINE OF TRACK: NA

CENTERLINE OF TRACK TO FACE OF JACKING/RECEIVING PITS: 4.4m

TYPE, SIZE AND SPACING OF INSULATORS OR SUPPORTS: NA

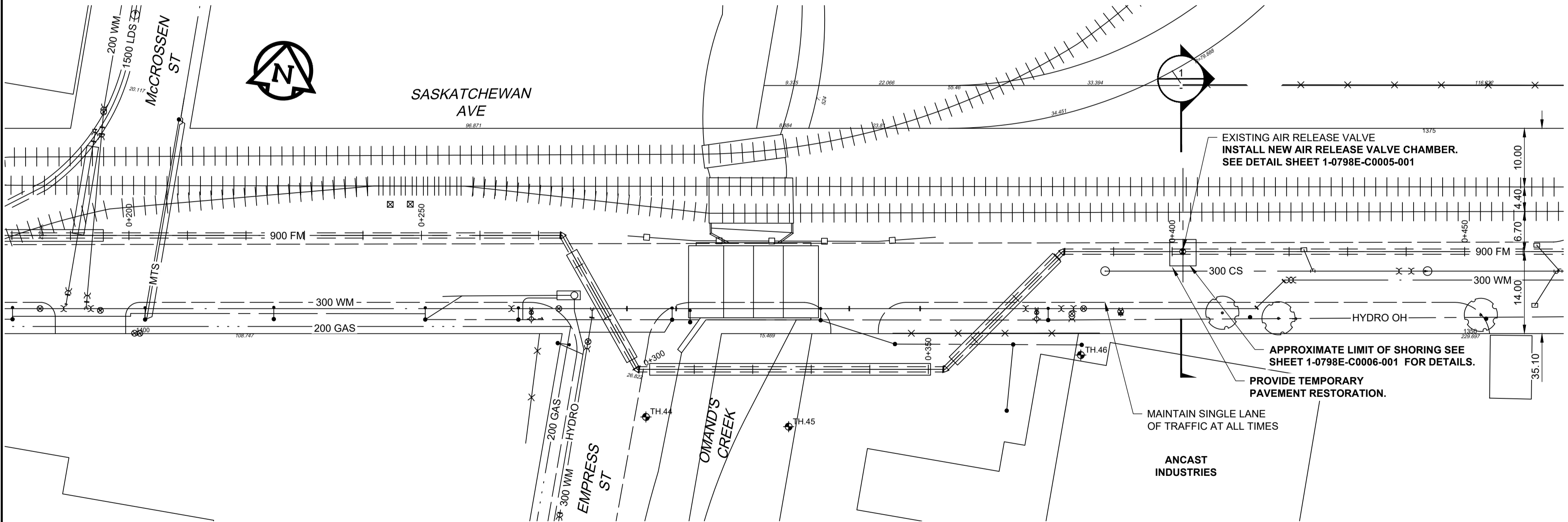
CATHODIC PROTECTION: NA

GEOTECHNICAL BOREHOLES: NA

SOIL TYPE: NA

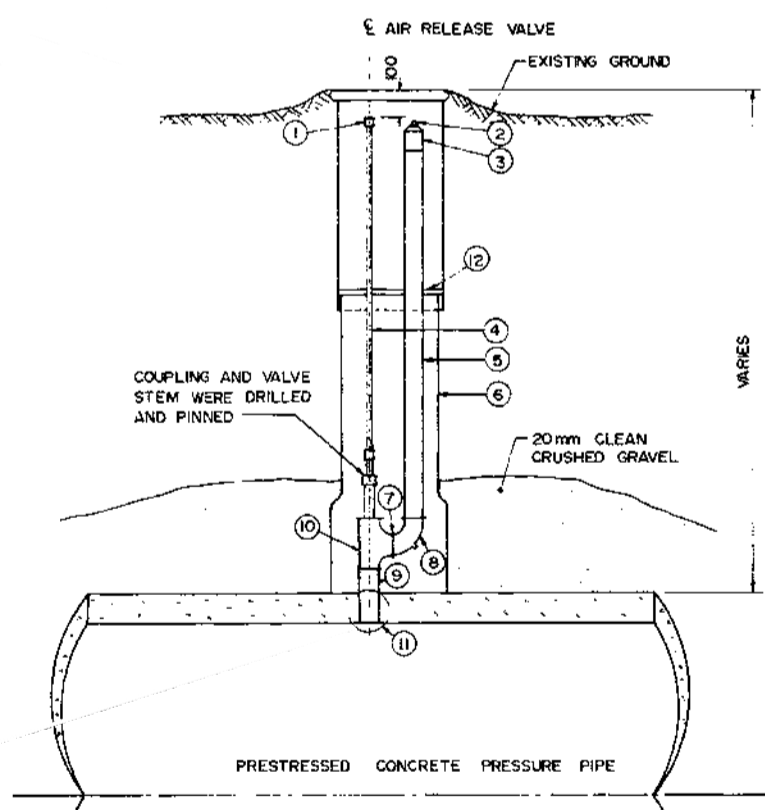
BASE OF RAIL TO GROUNDWATER: NA

TO BE CONSTRUCTED AND MAINTAINED IN ACCORDANCE WITH TRANSPORT CANADA TC-E10



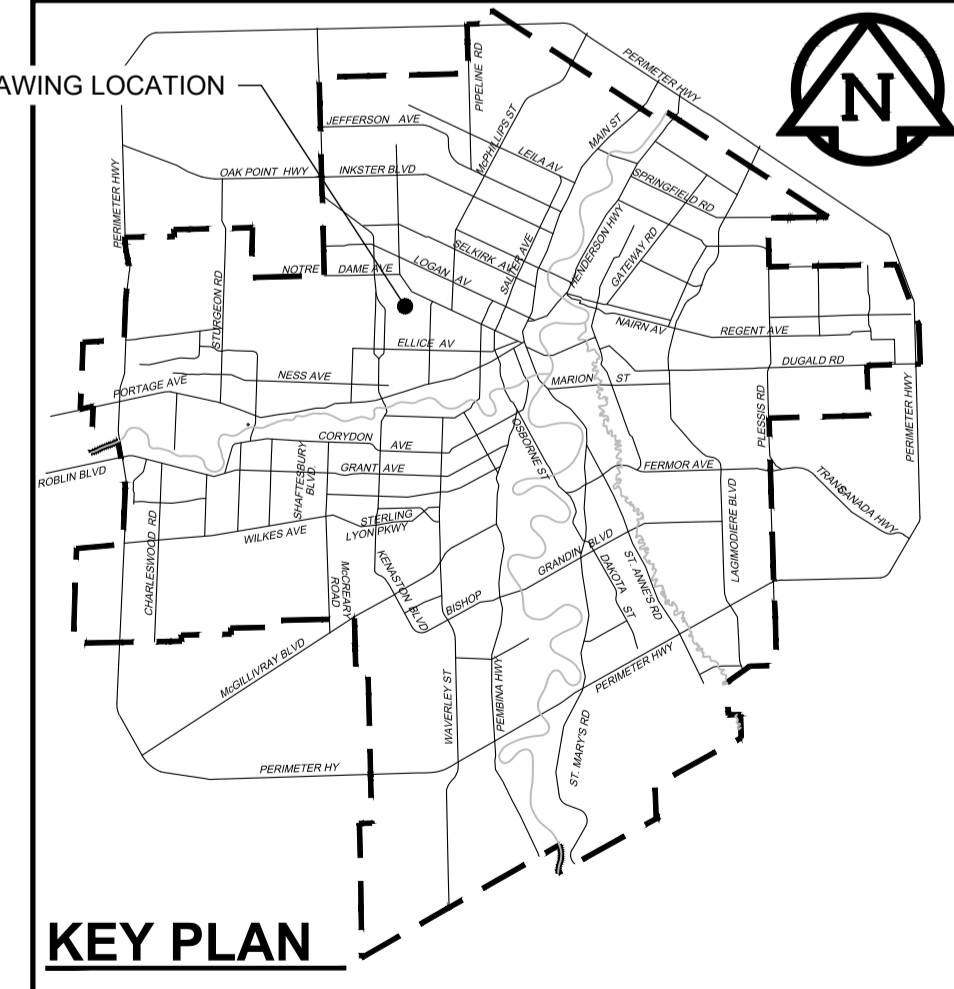
PLAN

Scale 1:500
0 12.5 25 m



EXISTING AIR RELEASE VALVE

REFERENCED FROM CITY DWG NUMBER D-1627 Scale N.T.S.



- GENERAL NOTES**
- IT IS PROPOSED TO CONSTRUCT TEMPORARY SHORING TO FACILITATE CONSTRUCTION OF AIR RELEASE VALVE CHAMBER
 - ALL DIMENSIONS TO BE VERIFIED IN THE FIELD BY THE CONTRACTOR THROUGH SURVEY TO CONFIRM THE LOCATION OF THE EXISTING AND THE NEW STRUCTURE PRIOR TO START OF WORK
 - HYDRO EXCAVATE TO CONFIRM ELEVATION AND LOCATION OF SIDES OF EXISTING PIPE
 - RESOLVE WITH CONTRACT ADMINISTRATOR ALL DISCREPANCIES PRIOR TO START OF CONSTRUCTION
 - ALL DIMENSIONS ARE IN MILLIMETERS UNLESS OTHERWISE NOTED; ELEVATIONS AND STATIONS ARE IN METERS

WARNING

IF POWER EQUIPMENT OR EXPLOSIVES ARE TO BE USED FOR EXCAVATION ON THIS PROJECT THE CONTRACTOR MUST:

- NOTIFY THE GAS COMPANY OF THE PROPOSED LOCATION OF EXCAVATION.
- TAKE PRECAUTION TO AVOID DAMAGE TO GAS COMPANY INSTALLATIONS.

SEE PROVINCIAL REGULATION 210/72 FOR DETAILS

LOCATION APPROVED
UNDERGROUND STRUCTURES

SUPV. U/G STRUCTURES COMMITTEE DATE

NOTE:
LOCATION OF UNDERGROUND STRUCTURES AS SHOWN ARE BASED ON THE BEST INFORMATION AVAILABLE BUT NO GUARANTEE IS GIVEN THAT ALL EXISTING UTILITIES ARE SHOWN OR THAT THE GIVEN LOCATIONS ARE EXACT. CONFIRMATION OF EXISTENCE AND EXACT LOCATION OF ALL SERVICES MUST BE OBTAINED FROM THE INDIVIDUAL UTILITIES BEFORE PROCEEDING WITH CONSTRUCTION.

B.M. 84R505 N.W. Cor. Saskatchewan Ave. & Midland St., Tbt. on top of 0.05 m dia. x 1.2 m iron pipe 10.2 m S. of N.L. of Saskatchewan Ave. & 5.6 m E. of W.L. of Midland St.

CONSTRUCTION COMPLETION DATE: YYYY MM DD

NO.	ISSUED FOR TENDER	22/06/15	ADL
NO.	REVISIONS	DATE	BY

AECOM

WHOLE NUMBERS INDICATE MILLIMETRES
DECIMALIZED NUMBERS INDICATE METRES

DESIGNED BY	TJB	CHECKED BY	MGM
DRAWN BY	ADL	APPROVED BY	KWF
SCALE:	HORIZONTAL AS NOTED VERTICAL N/A		
DATE	2022 06 21	RELEASED FOR CONSTRUCTION	Paul Bortoluzzi
PLOT DATE:	2022 06 21	DATE	Jun 21/22

ENGINEER'S SEAL

ORIGINAL SIGNED BY J. Thompson
June 21, 2022

CONSULTANT DRAWING NUMBER C-1006

THE CITY OF WINNIPEG
WATER AND WASTE DEPARTMENT
ENGINEERING DIVISION

PROVISION OF PIPELINE ACCESS MODIFICATIONS, CLEANING AND SUPPORT SERVICES FOR RIVER CROSSING INSPECTIONS - PHASE THREE

SITE 8
WEST END FEEDERMAIN
(at OMAND'S CREEK)

SHEET 07 OF 11
CITY DRAWING NUMBER 1-0798E-C0003-001