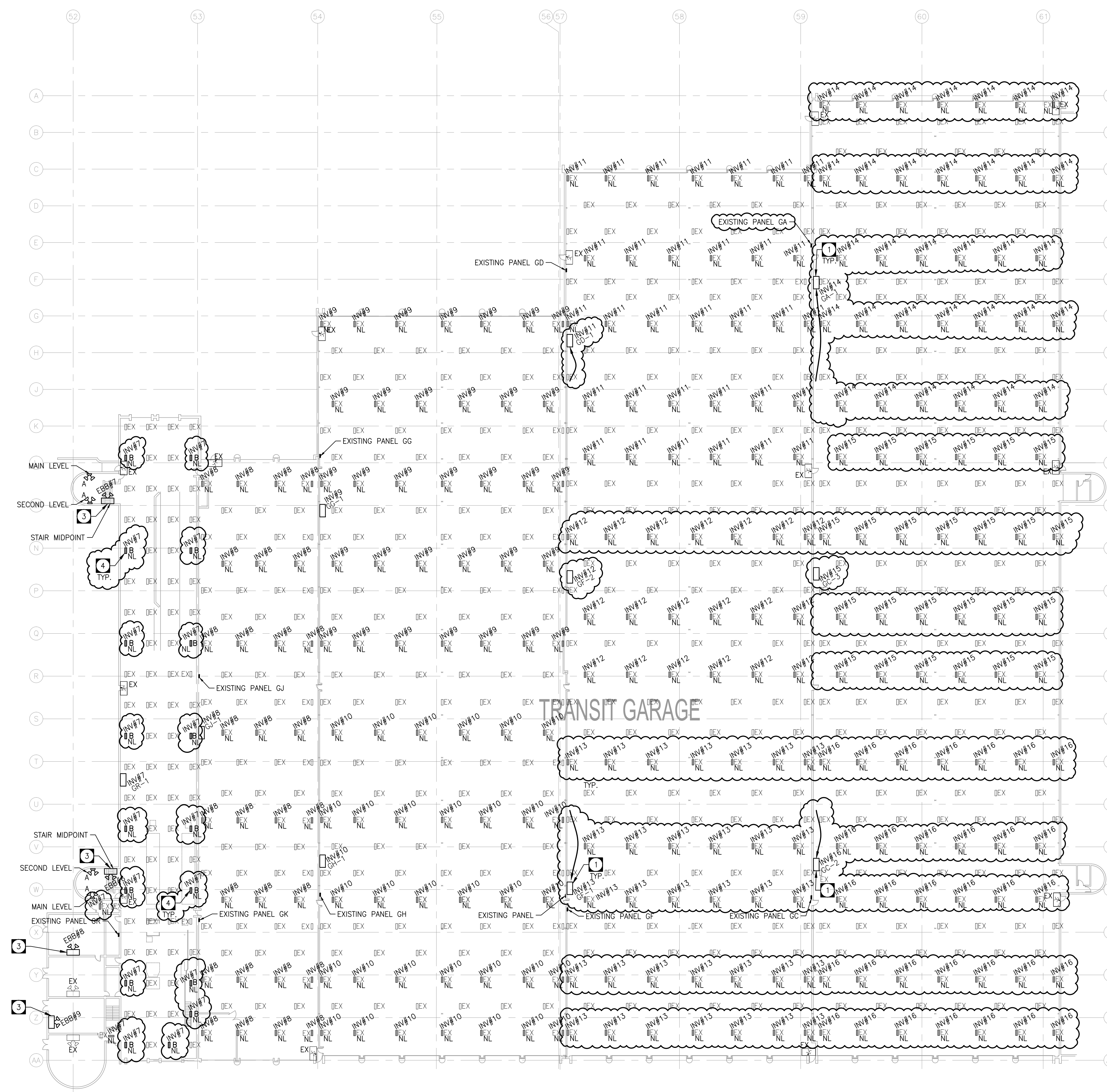


SITE KEY PLAN
N.T.S.



BUILDING B
SCALE: 1/32"=1'-0"

- DRAWING NOTES:**
- 1 WIRE AND CONNECT INVERTERS TO NIGHT LIGHT FIXTURES. REVISE/REWORK/PROVIDE NEW CONDUIT AS REQUIRED TO FEED EXISTING LIGHTING WITH NEW CIRCUITS FROM INVERTERS. INVERTER EMERGENCY LIGHTING CONDUIT SYSTEM SHALL BE SEPARATE FROM ALL OTHER CONDUIT SYSTEMS. TYPICAL.
 - 2 REVISE EXISTING LIGHTING CIRCUITS FOR INVERTER FEED FIXTURES AS SHOWN. MARK UNUSED CIRCUITS AS SPARE IN RESPECTIVE PANEL SCHEDULES.
 - 3 WIRE AND CONNECT TO UNSWITCH LOCAL LIGHTING CIRCUIT.
 - 4 NEW TYPE B FIXTURES SHALL BE LITHONIA CSVL L48 ALSO 40VOLT SWMS BODY. THESE FIXTURES SHALL BE PROVIDED AS PART OF A CASH ALLOWANCE. REFER TO SPECIFICATION 01 21 10 ITEM 2.1. PROVIDE NEW CONDUIT AND WIRING FOR LAYOUT AS SHOWN. FIXTURES ARE IN ADDITION TO THE EXISTING LIGHTS IN THE AREA.

1	ADDENDUM E02	2021-11-08	JRF
0	ISSUED FOR CONSTRUCTION	2021-09-15	JRF
NO.	REVISIONS	DATE	BY

TOWER ENGINEERING Project 191529
towereng.ca
Calgary: 403-235-2655
Winnipeg: 204-925-1150

These design documents are prepared solely for the use by the party with whom the design professional has entered into a contract and there are no representations of any kind made by the design professional to any party with whom the design professional has not entered into a contract. Any use of the drawing, disk or electronic data without the expressed written permission of Tower Engineering Group is strictly prohibited. The contractor is responsible to verify all dimensions with conditions on the site and report discrepancies to Tower Engineering for adjustment. All prints to be returned.

SEAL

APEGM
Certificate of Authorization
Tower Engineering Group
No. 4156

PROJECT

TRANSIT EMERGENCY LIGHTING
421 OSBORNE
WINNIPEG, MANITOBA

DRAWING

BUILDING B RENOVATION PLAN

DESIGNED:	JRF	DRAWING NO.	505-2021_DRAWING_E2.3
DRAWN:	VRR	REVISION	R1
CHECKED:	SMM		
SCALE:	AS NOTED		
PLOT DATE:	2021-11-08		
PROJECT NO.:	191529		