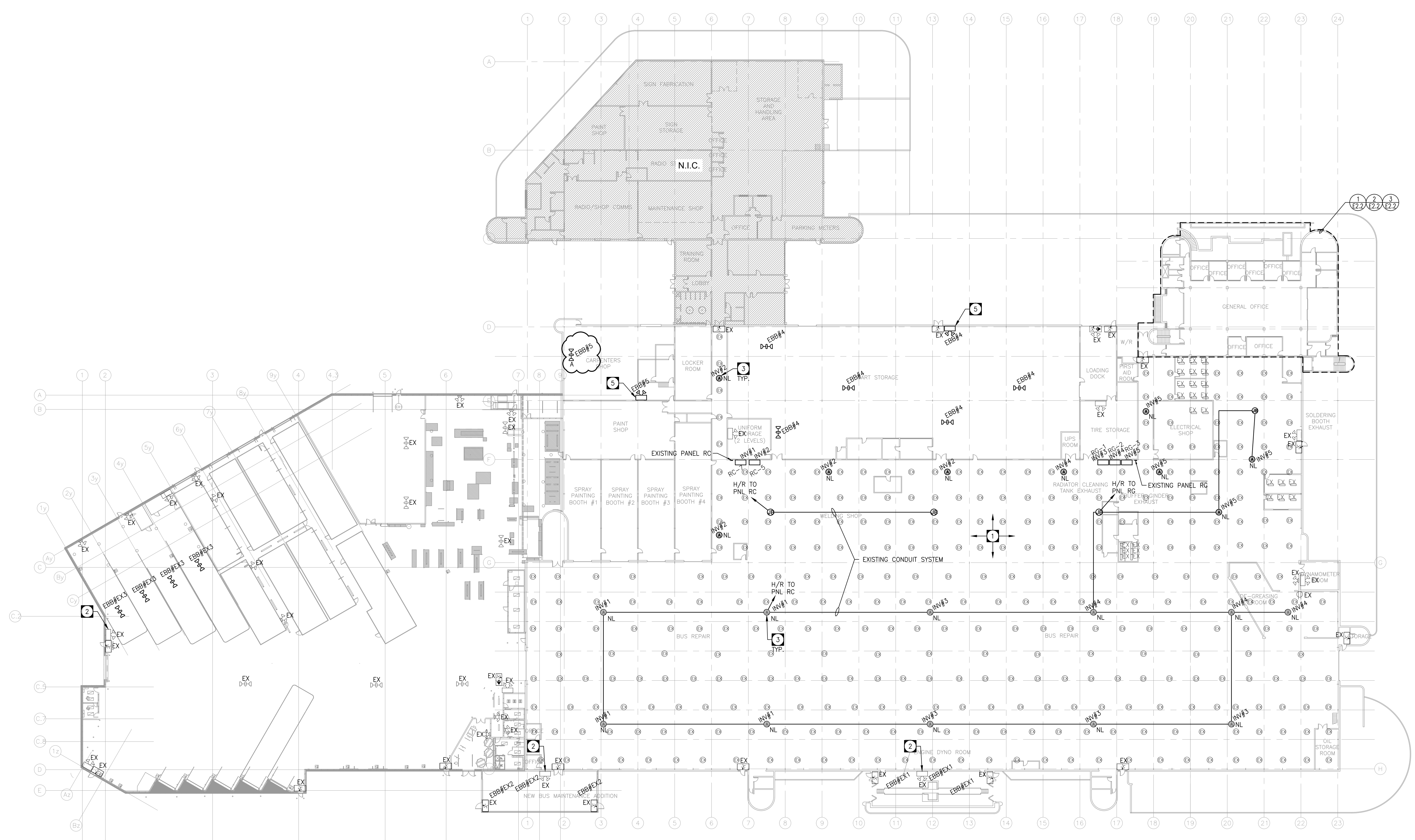


SITE KEY PLAN
N.T.S.

- DRAWING NOTES:**
- 1 REWORK EXISTING CONDUIT FOR NEW NIGHT LIGHTING LAYOUT AS REQUIRED.
 - 2 CONFIRM EXISTING BATTERY BANK LOADS AND VOLTAGE BEFORE CONNECTING NEW REMOTE HEADS.
 - 3 NEW NIGHT LIGHT FIXTURES SHALL BE ACUTY BRANDS HOLOFRANE PRIZZON P/NZ 30L 4X 300R1 12 P/W. THESE FIXTURES SHALL BE PROVIDED AS PART OF A CASH ALLOWANCE. REFER TO SPECIFICATION 01 21 10.
 - 4 CONNECT TO EXISTING LIGHTING CIRCUIT. CONFIRM EXISTING LIGHTING CIRCUIT IS UNSWITCHED.
 - 5 CONNECT BATTERY BANK TO LOCAL AREA LIGHTING CIRCUIT. 4 CIRCUIT VSR SHALL BE CONNECTED TO MONITOR ALL LIGHTING CIRCUITS IN THE AREA WHERE NEW EMERGENCY LIGHTING IS LOCATED. CONFIRM CIRCUITS TO MONITOR ON SITE.



BUILDING A - MAIN FLOOR
SCALE: 1/32"=1'-0"

1	ADDENDUM E02	2021-11-08	JRF
0	ISSUED FOR CONSTRUCTION	2021-09-15	JRF
NO.	REVISIONS	DATE	BY
		Project: 191529	
		towereng.ca	
		Calgary: 403-235-2655	
		Winnipeg: 204-925-1150	
<small>These design documents are prepared solely for the use by the party with whom the design professional has entered into a contract and there are no representations of any kind made by the design professional to any party with whom the design professional has not entered into a contract. Any use of the drawing, disk or electronic data without the expressed written permission of Tower Engineering Group is strictly prohibited. The contractor is responsible to verify all dimensions with conditions on the site and report discrepancies to Tower Engineering for adjustment. All prints to be returned.</small>			
SEAL	SEAL		
PROJECT TRANSIT EMERGENCY LIGHTING 421 OSBORNE WINNIPEG, MANITOBA			
DRAWING BUILDING A RENOVATION PLAN			
DESIGNED:	JRF	DRAWING NO.	505-2021_DRAWING_E2.1
DRAWN:	VRR	REVISION	
CHECKED:	SMM		
SCALE:	AS NOTED		
PLOT DATE:	2021-11-08		R1
PROJECT NO.:	191529		