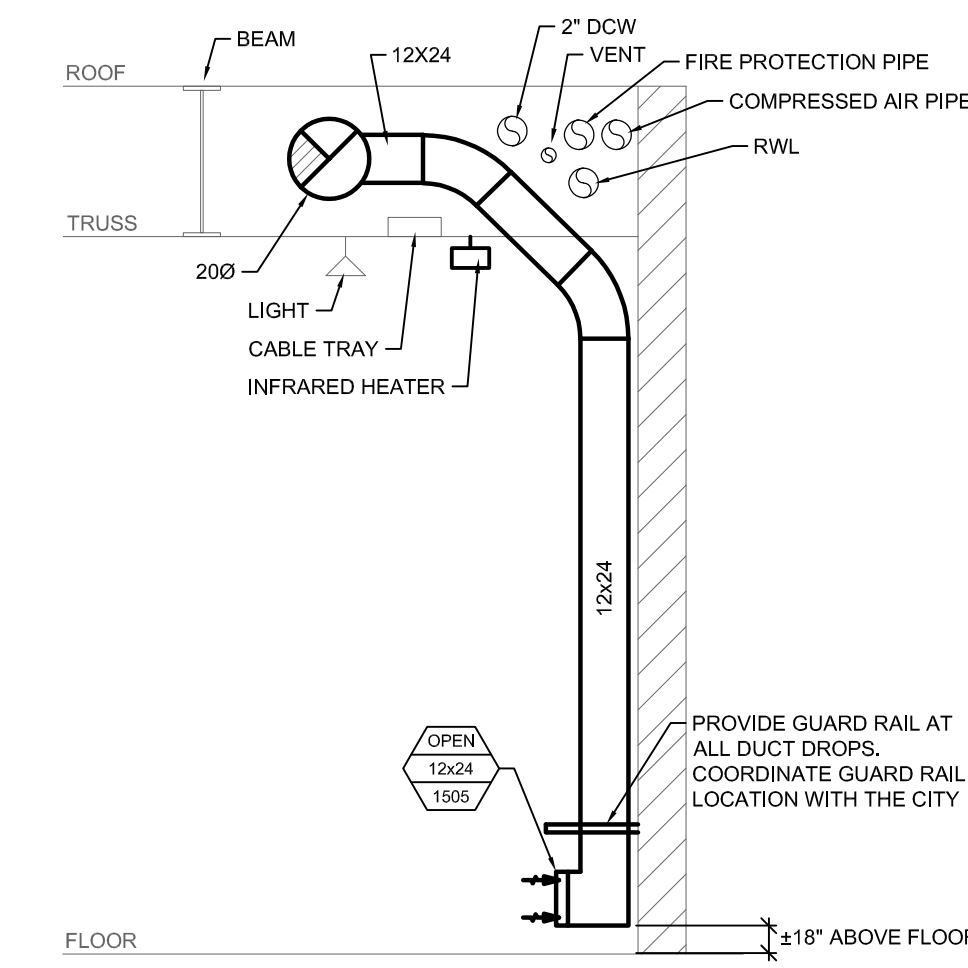


1 PARTIAL MAIN FLOOR PLAN - VENTILATION - NEW CONSTRUCTION
SCALE: 1/16"=1'-0"



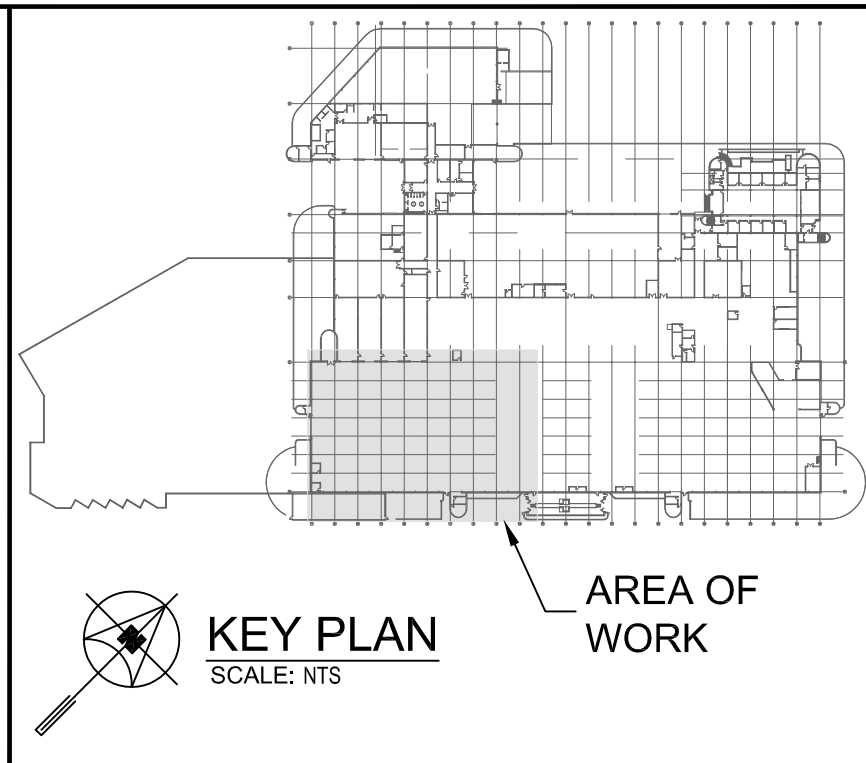
2 EXHAUST DUCT SECTION VIEW
SCALE: NTS

GENERAL NOTES

- A. THIS BUILDING MAY CONTAIN ASBESTOS. REFER TO FRONT END SPECIFICATION FOR FURTHER INFORMATION.
- B. REFER TO ROOF DETAILS AND SPECIFICATION FOR ALL NEW AND CAPPED OPENINGS.
- C. THE WORK AREA IS OCCUPIED 24/7. DURING THE HOURS OF 7:00 AM TO 2:30 PM, IT IS THE BUSIEST TIME FOR THE AREA AND IT IS PREFERRED THAT NO MORE THAN TWO HOIST SPACES ARE IMPACTED BY THE SCOPE OF WORK BUT ADDITIONAL HOISTS MAY BE IMPACTED WITH SUFFICIENT NOTICE AND APPROVAL. DURING THE HOURS OF 2:30 PM TO 7:00 AM, THE AREA IS LESS BUSY AND APPROVAL FOR ADDITIONAL HOISTS TO BE IMPACTED WILL BE MORE EASILY OBTAINED. COORDINATE WITH THE CITY PRIOR TO COMMENCEMENT OF WORK. UPON COMPLETION OF WORK AT THE END OF EACH SHIFT, CLEAN UP THE AREA OF WORK TO ENSURE THE HOISTS ARE NOT IMPACTED.
- E. FOR DRAWING CLARITY, NOT ALL MECHANICAL EQUIPMENT, PIPING AND DUCTWORK HAS BEEN SHOWN.
- F. CAUTION SHOULD BE TAKEN TO PREVENT SILICA RELEASE AND FUMES INSIDE THE GARAGE. IT IS CONTRACTOR RESPONSIBILITY TO MONITOR AND CONTROL SILICA AND FUMES RELEASE AS A SAFETY RISK.

KEY NOTES

- 1. DUCT RUNNING EAST/WEST TO BE RUN THROUGH JOIST WEBS.
- 2. DUCT RUNNING NORTH/SOUTH TO BE RECESSED UP BETWEEN JOISTS.
- 3. RUN DUCTWORK DOWN THE WALL. SUPPORT DUCT FROM WALL. COORDINATE FINAL DROP DOWN LOCATION WITH THE CITY PRIOR TO INSTALLATION.
- 4. EXHAUST DUCT OPENING C/W WIRE MESH AT LOW LEVEL ±18" ABOVE FLOOR. PROVIDE GUARD RAIL AROUND DUCT.
- 5. EXHAUST DUCT OPENING C/W WIRE MESH AT HIGH LEVEL.
- 6. RELOCATE EXHAUST OUTLET AND CONNECT TO EXISTING.
- 7. OFFSET EXHAUST DUCT TO AVOID SUPPLY DUCT/EXISTING SERVICE PIPES.
- 8. RELOCATE FRESH AIR INTAKE AND CONNECT TO EXISTING.
- 9. REFER TO M4.1 FOR DETAIL.
- 10. EXTEND REFRIGERANT PIPING OR UPSIZE AS REQUIRED TO SUIT RELOCATION OF CONDENSING UNIT ON ROOF. RECHARGE REFRIGERANT AFTER INSTALLATION.
- 11. OFFSET DUCTWORK TO AVOID EXISTING GAS PIPING IN THE CEILING SPACE.
- 12. ENSURE DUCT DROP HEIGHT DOES NOT IMPACT THE FULL LIFT OF BUS.
- 13. ENSURE THAT NO FUMES FROM GAS FIRED CONSTRUCTION EQUIPMENT ARE RELEASED INTO THE AREA OF WORK. CONTRACTOR MAY UTILIZE EXISTING TAIL PIPE EXHAUST FOR SOURCE CAPTURE OF FUME EXHAUST WITH THE APPROVAL FROM THE CITY. CONTRACTOR SHALL ASSUME ALL COSTS TO TEMPORARILY MODIFY SYSTEM TO EXTEND EXHAUST INLET TO GAS FIRED CONSTRUCTION EQUIPMENT AND TO RESTORE BACK TO ORIGINAL ARRANGEMENT. COORDINATE WITH THE CITY PRIOR TO PROCEEDING.
- 14. PROVIDE NEW CONTROLLER FOR HRU-1 & 2 AT APPROXIMATELY THIS LOCATION AND TIE INTO EXISTING JOHNSON CONTROL METASYS SYSTEM. REFER TO ELECTRICAL FOR POWER SUPPLY REQUIREMENTS.
- 15. REFER TO SPECIFICATION SECTION 238010 CLAUSE 2.3.2 FOR DUCT PRESSURE CLASS CONSTRUCTION REQUIREMENTS.



4			
3			
2			
1			
0	ISSUED FOR CONSTRUCTION	JH	07/06/22
NO.	Description	BY	DDMMYY

ENGINEERS GEOSCIENTISTS
MANITOBA
Certificate of Authorization
SMS Engineering Ltd.
No. 166

J.T. HORROCKS
Member
24767
PROFESSIONAL ENGINEER

SMS Engineering
770 Bradford Street Winnipeg, Canada (204) 775-0291
20-349-01

Winnipeg Transit

Project Title
TRANSIT MAINTENANCE AND REPAIR BUILDING MECHANICAL UPGRADE - WEST HIGH BAY
WINNIPEG MANITOBA

Drawing Title
PARTIAL MAIN FLOOR PLAN - VENTILATION - NEW CONSTRUCTION

Drawn By RNS	Checked By XZ	Approved By JH
Scale 1/16"=1'-0"	Date JUNE 2022	Project No. 20-349-01
Revision Number 0	Drawing Number M4.1	Sheet Order 9 OF 10

FILE NAME AND PATH: C:\PROJECTS\20200000\349_Terminal Maintenance @ Winnipeg\349_Cad\Rev 01.5 AutoCAD\349_M4.1_VW.dwg
 LAYOUT: M4.1
 DATE PLOTTED: Thursday, April 27, 2023 10:22:24 AM
 LAST SAVED BY: rns