

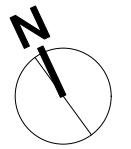
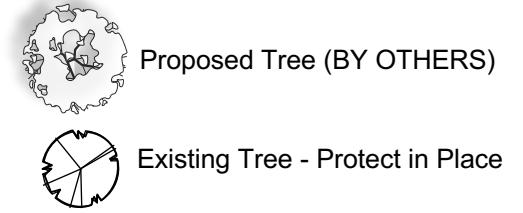
LEGEND

- 1 New Two-Bay Sr. Swing Set c/w Engineered Wood Fibre Safety Surfacing as per SCD-650 (122 SM)
- 2 New Age 5-12 Play Equipment c/w Engineered Wood Fibre Safety Surfacing as per SCD-650 (167 SM) **MUST BE ON STRINGER SYSTEM**
- 3 New Age 2-5 Play Equipment and Jr. Swing Set c/w Engineered Wood Fibre Safety Surfacing as per SCD-650 (153 SM)

- 4 Relocate Existing Monument - Refer to Detail 1 C.21-4
- 5 New Accessible Picnic Tables as per SCD-122A (2)
- 6 New Benches 1 Backless and 3 Backed as per SCD-121D and SCD-121F (3)
- 7 New Waste Receptacles as per SCD-119A (2)
- 8 New Sod Including Mini Soccer Field c/w Subsurface Drainage (Blue Dashed Lines - 256 LM) (4634 SM)

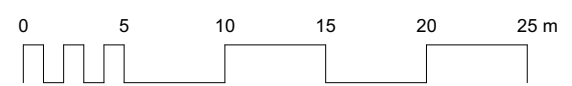
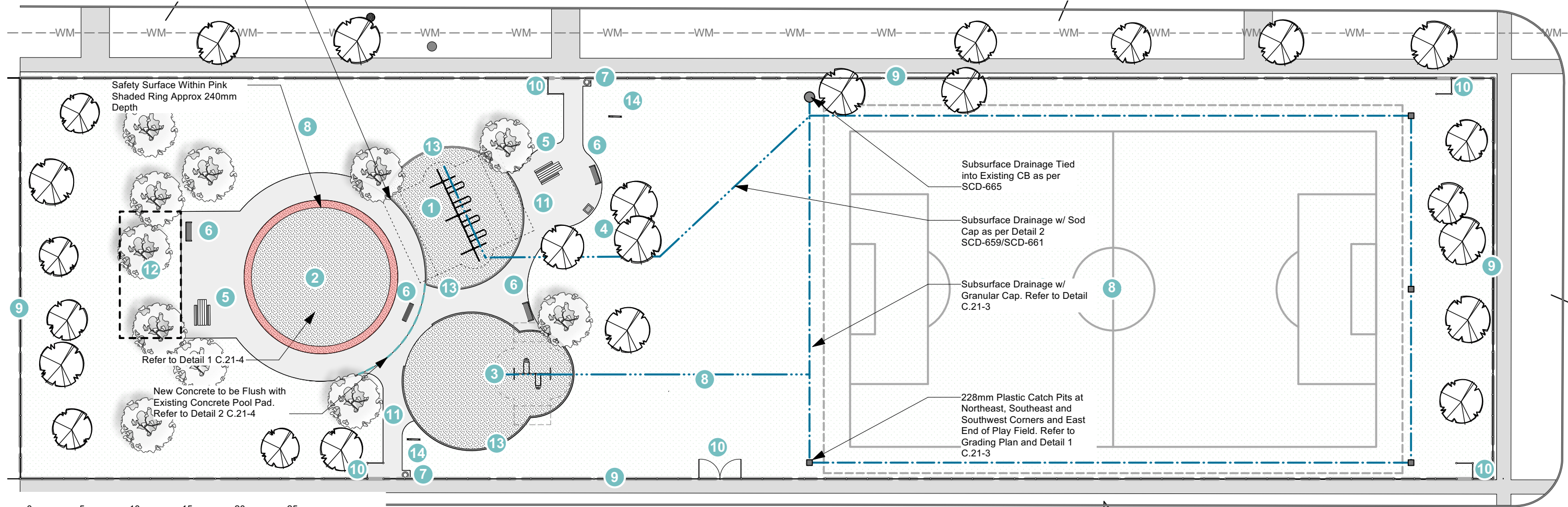
- 9 Replace Chain Link Rails, Tension Wire, Ties and Fabric on Existing Posts (356LM)
- 10 Add Baffle Gates (4) as per SCD-633 and 16' Wide, 4' Tall Dual Open Chain Link Gate on Solid Wheels (1)
- 11 **New 125mm Thick, Reinforced CIP Concrete Path and Seating Area as per SCD-663 (149 SM)**

- 12 Footprint of Removed Wading Pool and Change Building (By Others)
- 13 New 150mm Wide CIP Concrete Play Edging as per SCD-643 (87 LM)
- 14 New Double-Sided Park Sign as per SCD-153 (2)



..... Sod Cap: 76 LM
 - - - - - Granular Cap: 180 LM

Approved Bond Breaker Between Curbs and Concrete Pad. Bondbreaker to Sit Below Top of Concrete and to be Sealed and Extend 25-50mm Below Bottom of Concrete.



CONTRACTOR TO CONFIRM ALL DIMENSIONS AND REPORT ANY DISCREPANCIES TO CONTRACT ADMINISTRATOR PRIOR TO CONSTRUCTION. LOCATION OF UNDERGROUND STRUCTURES AS SHOWN ARE BASED ON THE BEST INFORMATION AVAILABLE BUT NO GUARANTEE IS GIVEN THAT ALL EXISTING UTILITIES ARE SHOWN OR THAT THE GIVEN LOCATIONS ARE EXACT. CONFIRMATION OF EXISTENCE AND EXACT LOCATION OF ALL SERVICES MUST BE OBTAINED FROM THE INDIVIDUAL UTILITIES BEFORE PROCEEDING WITH CONSTRUCTION.



THE CITY OF WINNIPEG
 Planning, Property and Development Department
 Planning and Land Use Division
 Unit 15 - 30 Fort Street, Winnipeg, MB, (R3C 4X5)

DESIGNED BY	CHECKED BY
DRAWN BY IM	APPROVED BY
HORIZ. SCALE 1:375	DATE May 2021
VERT. SCALE	

MANAGER, PARK AND OPEN SPACES	DATE
MANAGER, PLANNING AND LAND USE DIVISION	DATE

DRAWING TITLE
**Clara Hughes Park
 Playground Redevelopment
 Proposed**

SITE ADDRESS 400 Matheson Avenue

DRAWING NO.
**C.21- 2
 R2**

BID OPPORTUNITY NO.
 310-2021