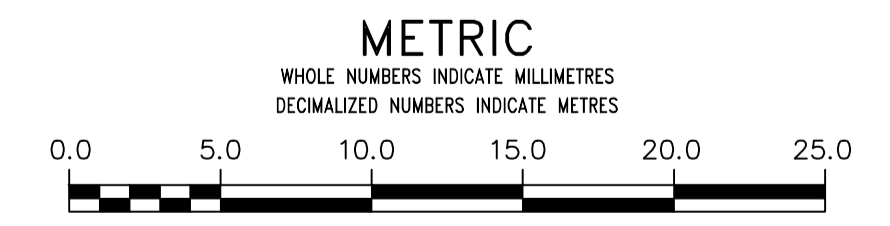


WATER SERVICE INFORMATION

ADDRESS	SIZE (mm) MATERIAL (STREET)	SIZE (mm) MATERIAL (PROP.)	SHORT & LONG MEASUREMENT	CRP LOCATION	REMARKS
888 PORTAGE AVE	20	20	9.8 SSL PORTAGE	0.9 N S/C	RECONNECT SERVICE
885 PORTAGE AVE	UNKN	25	10.4>NNL PORTAGE AVE	6.4>NNL PORTAGE AVE	-
884 PORTAGE AVE	20	20	0.6 SSL OF DOOR	OPP S/C	-
880 PORTAGE AVE	UNKN	38	12.2 SSL PORTAGE	OPP S/C	-
879 PORTAGE AVE	UNKN	UNKN	12.8 SSL PORTAGE	OPP S/C	-
878 PORTAGE AVE	UNKN	UNKN	UNKN	UNKN	-
877 PORTAGE AVE	UNKN	UNKN	UNKN	UNKN	-
876 PORTAGE AVE	UNKN	UNKN	UNKN	UNKN	-
875 PORTAGE AVE	UNKN	UNKN	UNKN	UNKN	-
873 PORTAGE AVE	UNKN	UNKN	UNKN	UNKN	-
871 PORTAGE AVE	UNKN	UNKN	UNKN	UNKN	-
869 PORTAGE AVE	UNKN	UNKN	UNKN	UNKN	-
867 PORTAGE AVE	UNKN	UNKN	UNKN	UNKN	-
875 PORTAGE AVE	UNKN	UNKN	UNKN	UNKN	-
875 PORTAGE AVE	UNKN	UNKN	UNKN	UNKN	-
875 PORTAGE AVE	UNKN	UNKN	UNKN	UNKN	-
873 PORTAGE AVE	UNKN	UNKN	UNKN	UNKN	-
873 PORTAGE AVE	UNKN	UNKN	UNKN	UNKN	-
871 PORTAGE AVE	UNKN	UNKN	UNKN	UNKN	-
870 PORTAGE AVE	UNKN	UNKN	UNKN	UNKN	-
867 PORTAGE AVE	UNKN	UNKN	UNKN	UNKN	-

*SERVICES TO BE RENEWED TO R. ALL OTHERS TO BE RECONNECTED

NOTE: ALL VALVES TO BE INSTALLED COUNTERCLOCKWISE TO CLOSE



WARNING
IF POWER EQUIPMENT OR EXPLOSIVES ARE TO BE USED FOR EXCAVATION ON THIS PROJECT THE CONTRACTOR MUST:
1) NOTIFY THE GAS COMPANY OF THE PROPOSED LOCATION OF EXCAVATION.
2) TAKE PRECAUTION TO AVOID DAMAGE TO GAS COMPANY INSTALLATIONS.
SEE PROVINCIAL REGULATION 21072 FOR DETAILS

LOCATION APPROVED
UNDERGROUND STRUCTURES
SUPV. U/G STRUCTURES COMMITTEE DATE
NOTE:
LOCATION OF UNDERGROUND STRUCTURES AS SHOWN ARE BASED ON THE BEST INFORMATION AVAILABLE BUT NO GUARANTEE IS GIVEN THAT ALL EXISTING UTILITIES ARE SHOWN OR THAT THE GIVEN LOCATIONS ARE EXACT. CONFIRMATION OF EXISTENCE AND EXACT LOCATION OF ALL SERVICES MUST BE OBTAINED FROM THE INDIVIDUAL UTILITIES BEFORE PROCEEDING WITH CONSTRUCTION.

NO.	REVISIONS	DATE	BY
3	ADDENDUM 1	2021/05/06	R.H.
2	RE-ISSUED FOR TENDER	2021/04/29	R.H.
1	ISSUED FOR TENDER	2021/04/28	R.H.
0	ISSUED FOR DESIGN REVIEW	2021/04/27	R.H.

wsp
111-93 Lombard Avenue
Winnipeg, Manitoba
R3B 3B1 Canada
Phone: 204-943-3178
Fax: 204-943-4948
wsp.com

DESIGNED BY: R.H.
CHECKED BY: S.M.
DRAWN BY: R.H.
APPROVED BY: S.M.
SCALE: HORIZONTAL 1:250
VERTICAL 1:50
DATE: 2021 05 07

ENGINEER'S SEAL
NOT FOR CONSTRUCTION
CONSULTANT DRAWING NUMBER
211-00299-00-06

THE CITY OF WINNIPEG
WATER AND WASTE DEPARTMENT
ENGINEERING DIVISION
2021 WATER MAIN RENEWAL-CONTRACT 07
PORTAGE AVENUE
8.0 W OF ARLINGTON ST TO
3.5 M W OF HOME ST
SHEET **06** OF 12
CITY DRAWING NUMBER
D-16021