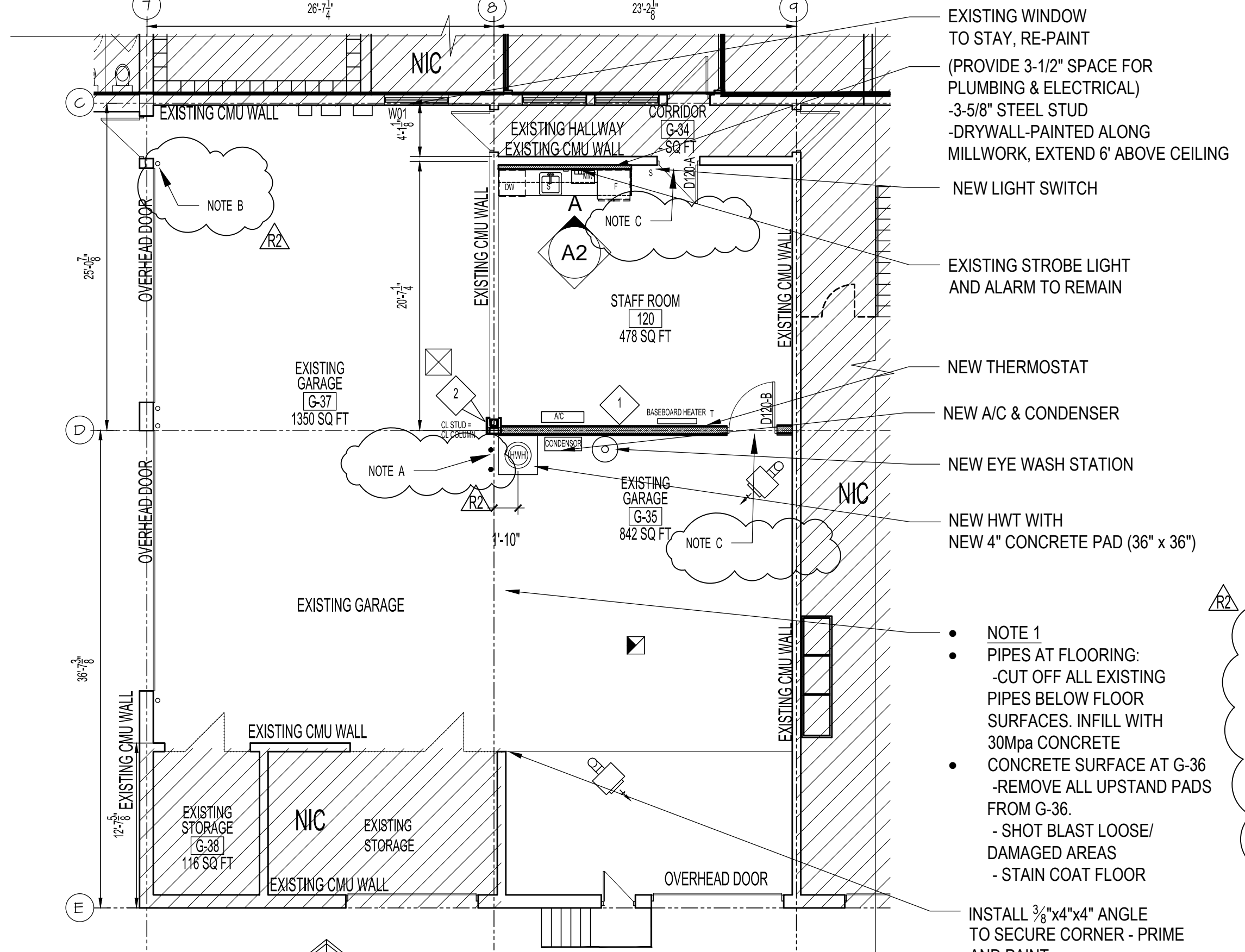
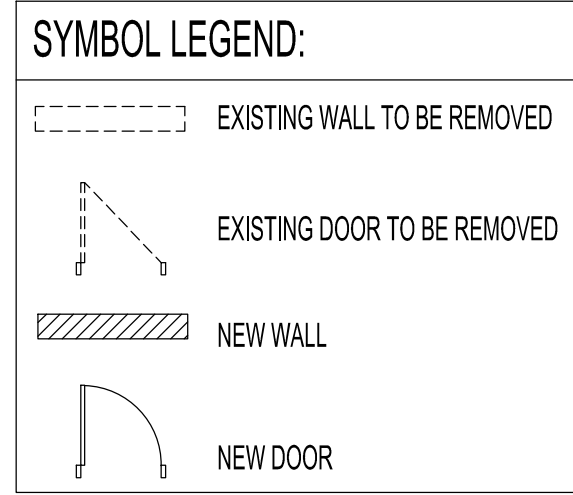
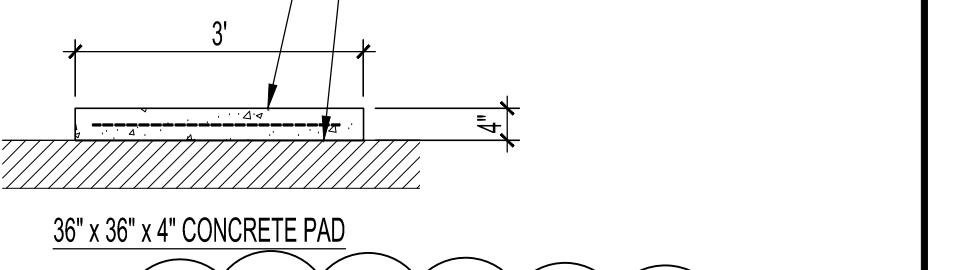


- DEMOLITION NOTES:**
- REMOVE SINK
  - SEE PROPOSED NOTE 1
  - REMOVE EXISTING LIGHTS
  - RELOCATE THERMOSTAT
  - REPLACE EXISTING HWT WITH NEW HWT - SEE MECH
  - EXISTING LIGHTS TO REMAIN IN THE GARAGE AREA



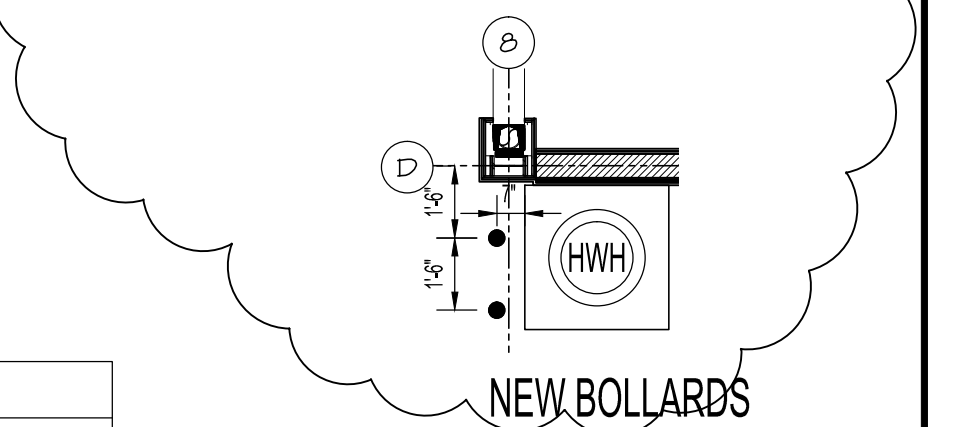
EXISTING WINDOW TO STAY, RE-PAINT (PROVIDE 3-1/2" SPACE FOR PLUMBING & ELECTRICAL)  
 -3/8" STEEL STUD  
 -DRYWALL-PAINTED ALONG MILLWORK, EXTEND 6" ABOVE CEILING  
 NEW LIGHT SWITCH  
 EXISTING STROBE LIGHT AND ALARM TO REMAIN  
 NEW THERMOSTAT  
 NEW A/C & CONDENSER  
 NEW EYE WASH STATION  
 NEW HWT WITH NEW 4" CONCRETE PAD (36" x 36")



**NOTE A:** INSTALL 2 UNITS-4 Ø CONCRETE FILLED BOLLARD, AUGER DIG HOLE, POUR 30 MPA WITH 10 MIL AGGREGATE CONCRETE, BACKFILL AND RE-SLAB. PAINT NEW BOLLARD WITH RUST-OLEUM ENAMEL GLOSS SAFETY YELLOW OIL-BASED PAINT. CONTRACTOR TO SCAN FLOOR FOR UNDERGROUND HAZARDS

**NOTE B:** PAINT EXISTING BOLLARD WITH RUST-OLEUM ENAMEL GLOSS SAFETY YELLOW OIL-BASED PAINT. CONTRACTOR TO SCAN FLOOR FOR UNDERGROUND HAZARDS

**NOTE C:** PROVIDE SS FLOOR TRANSITION STRIPS AS REQUIRED.



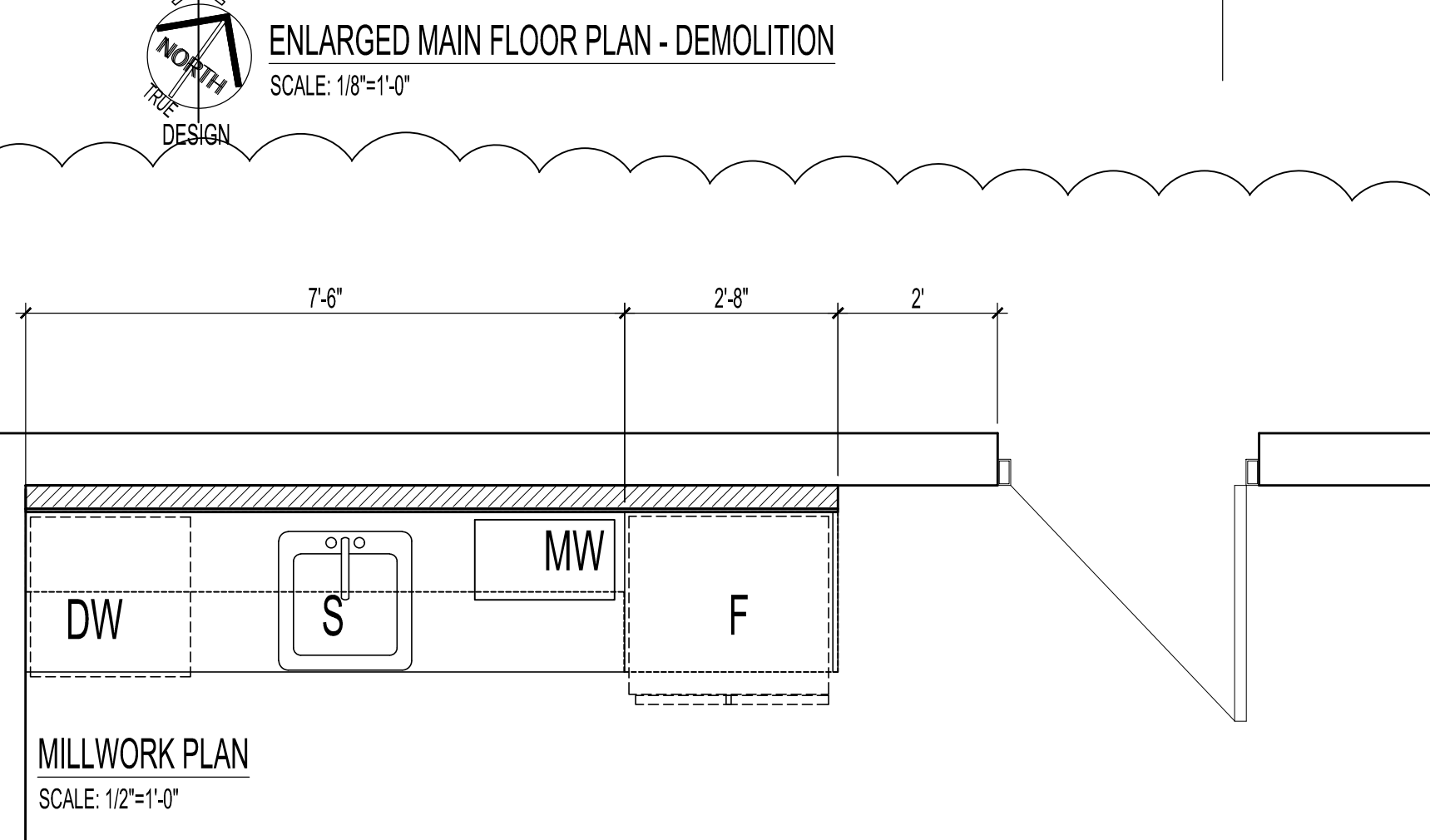
- NOTE 1**
- PIPES AT FLOORING:**
  - CUT OFF ALL EXISTING PIPES BELOW FLOOR SURFACES. INFILL WITH 30MPa CONCRETE
  - CONCRETE SURFACE AT G-36
  - REMOVE ALL UPSTAND PADS FROM G-36
  - SHOT BLAST LOOSE/DAMAGED AREAS
  - STAIN COAT FLOOR

**WALLS:**

- NBC Table A-9.10.3.1.A S9b 1.5H FRR  
 (2) LAYERS 1/2" TYPE "X" GWB  
 -HIGH IMPACT DW  
 6" STEEL STUDS 20Ga @12"O.C.  
 150MM THK. MINERAL FIBRE ABSORPTIVE MATERIALS  
 (2) LAYERS 1/2" TYPE "X" GWB  
 -HIGH IMPACT DW  
 METAL LINER 22Ga(GARAGE SIDE ONLY)  
 UP TO U/S OF DECK
- ULC X518 2HR FRR  
 (2) LAYER 1/2" TYPE "X" GWB  
 -HIGH IMPACT  
 1-5/8" STEEL STUDS  
 ALL AROUND STEEL COLUMN  
 UP TO U/S DECK  
 METAL LINER 22Ga(GARAGE SIDE ONLY)

ORIGINAL STAMPED BY: NEIL COOPER, NCA  
 DATE: 2019.09.18

No.	REVISION/DESCRIPTION	BY	DATE
2	ISSUED FOR ADDENDUM #2	AR	NOV 8 2019
1	ISSUED FOR ADDENDUM #1	AR	OCT 29 2019
0	ISSUED FOR CONSTRUCTION	AR	SEPT 26 2019



**PLASTIC LAMINATE**  
 PL #1 ARBORITE  
 ELEGANT WHITE S550  
 (SIDES AND FRONTS)  
 PL #2 ARBORITE  
 TATAMI NIKKI P298(SIDES AND FRONTS)

**MELAMINE**  
 ALL INTERIOR CABINETS TO BE WHITE MELAMINE

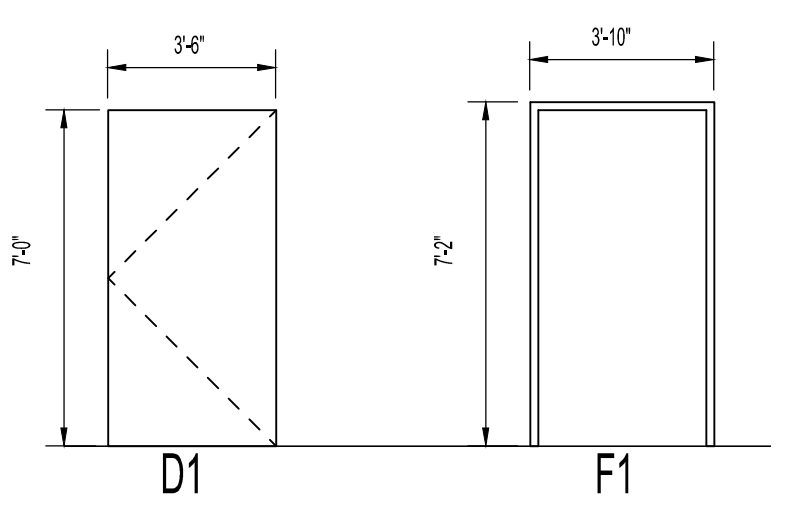
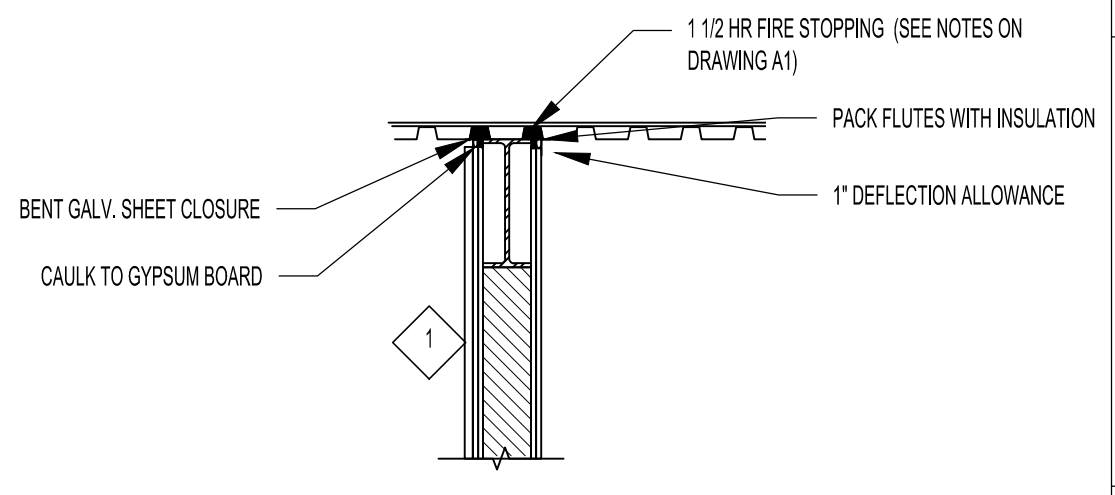
**HARDWARE**  
 DRAWER & DOOR PULLS: HAFELE 101.20.701 STEEL NICKEL MATTE @ 226MM LENGTHS  
 DRAWER SLIDES: ACCURIDE #3832 FULL EXTENSION SIDE MOUNT  
 HINGES: BLUM CLIP 170° SELF CLOSING NICKEL FINISH  
 RECESSED SHELF SUPPORTS: K&V PILASTER ZINC

**SINK**  
 QSL20207 - 3 HOLE - 1-1/2 DIAMETER, 4" CENTER-TO-CENTER FUN #101.0045.226  
 SIZE: 20 1/2" X 20" X 7"

**COUNTERTOP**  
 CEASARSTONE 3CM THICK INTENSE WHITE 6011

**BACKSPLASH**  
 MEROLA TILE 3"x6" TESSERA BLUE SMOKE  
 GROUT: MAPEI ULTRACOLOR 01 ALABASTER

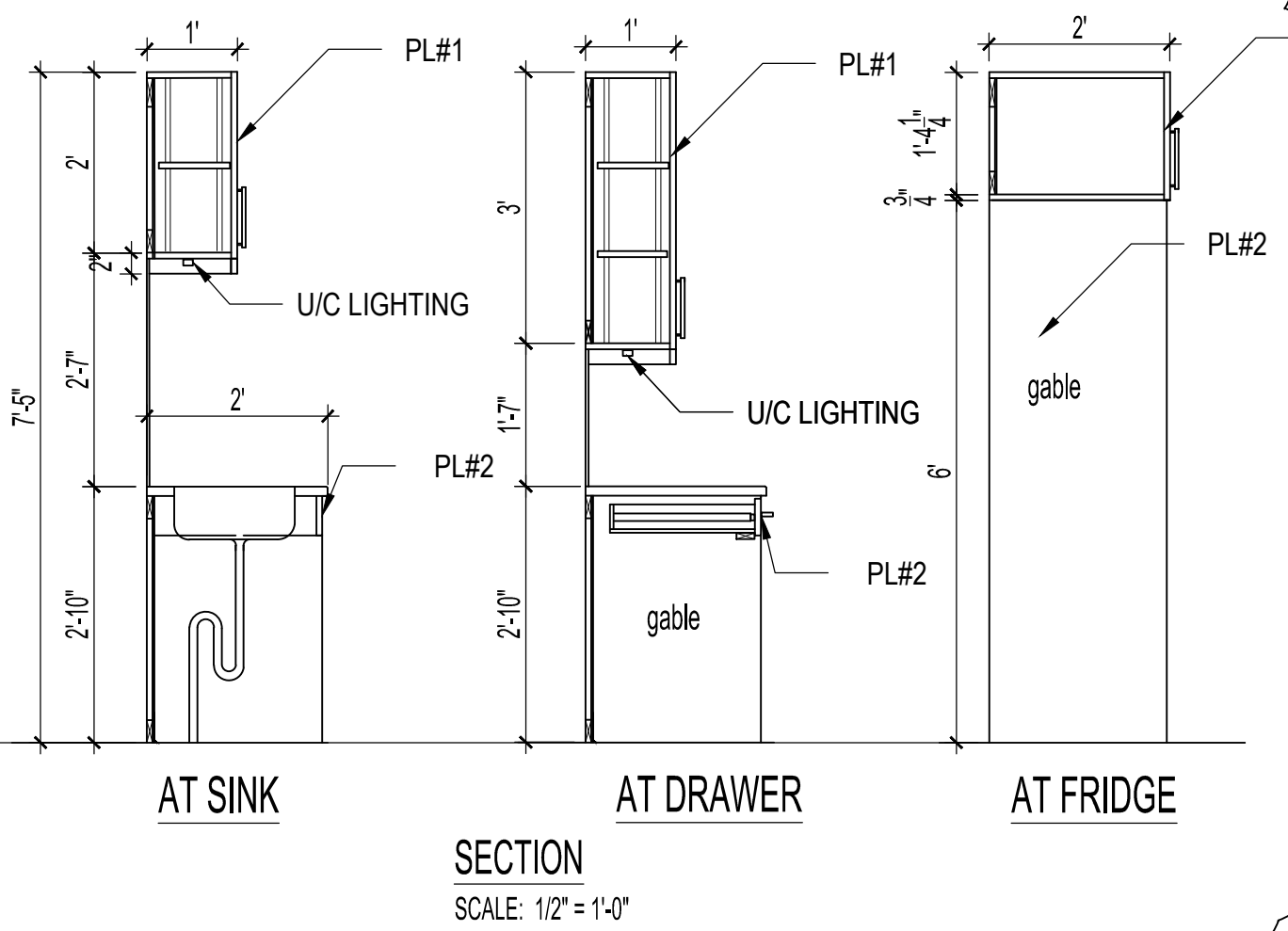
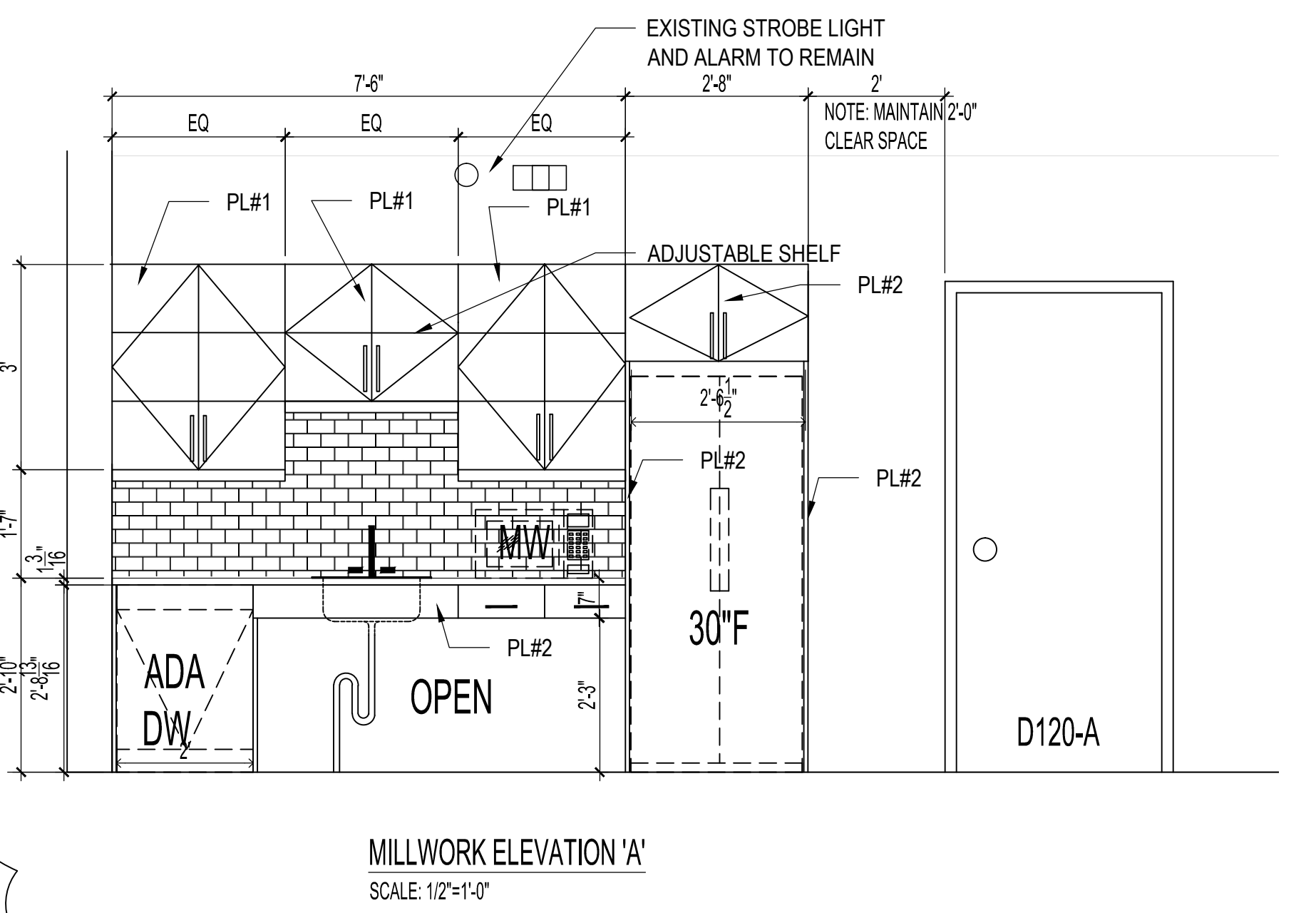
**NOTE:**  
 CONFIRM APPLIANCE DIMENSION



DOOR NO.	DOOR			FRAME			HARDWARE		NOTES		
	TYPE	WIDTH	HEIGHT	TYPE	MATL.	FINISH	GROUP				
D120-B	D1	3'-6"	7'-0"	1 1/2"	H.M.	PT	F1	P.S.	PT	1	1.0H FRR

- ABBREVIATIONS**  
 H.M.-HOLLOW METAL PT.-PAINT P.S.-PRESSED STEEL
- HARDWARE STANDARD:**  
 SHLAGE, LEVER TYPE, SATIN NICKEL FINISH
- GROUP # 1**  
 1.0 HR FIRE RATED DOOR  
 3 - HINGES NRP  
 1 - LOCKSET (PASSAGE)  
 1 - CLOSER  
 1 - KICKPLATE  
 2 - SMOKE SEAL W21 x 84 BLK  
 1 - SMOKE SEAL W21 x 42 BLK  
 1 - DOOR SWEEP  
 1 - FLOOR STOP

**Neil Cooper Architect**  
 109-374 River Avenue, Winnipeg, Manitoba R3L 0E4



**DRAWN** AR **CHECKED** NC **DESIGNED** NC **APPROVED** NC  
 DATE: 2019.09.18 **USER APPROVAL**

**THE CITY OF WINNIPEG**  
 PLANNING, PROPERTY AND DEVELOPMENT DEPARTMENT  
 MUNICIPAL ACCOMMODATIONS DIVISION  
 3-65 GARRY STREET, R3C 4K4

**PROJECT**  
 PUBLIC WORKS SOUTH YARD INTERIOR RENOVATIONS

1539 WAVERLEY STREET BID OPP: 944-2019

**SHEET TITLE**  
 DEMO PLAN, PROPOSED PLAN SCHEDULES, DETAIL

**SCALE** AS SHOWN **PROJECT No:** 2018-018 **SHEET No:** A2-R2

DRAWING SHEET SIZE: A1 (841mm x 594mm) PLOT 1:1