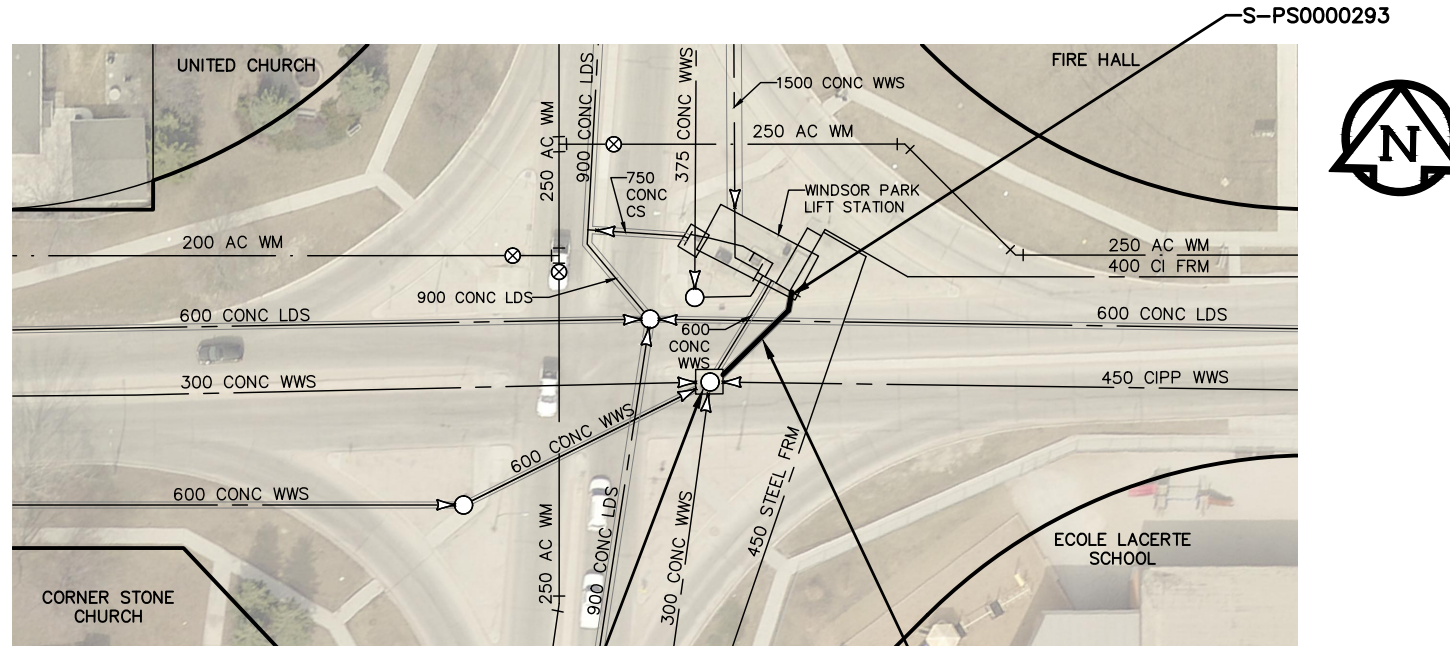


COTTONWOOD ROAD



AUTUMNWOOD DR

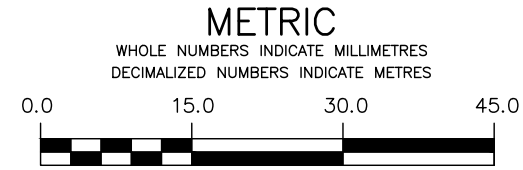
S-MH50004812
RIM 231.83
INV NE 224.07
INV E 224.07
INV S 224.07
INV SW 224.07
INV W 224.07

12.6 OF 600 CONC WWS TO BE LINED
S-MA70020213
(PARTIALLY DETERIORATED)

SEWER JUNCTION INFORMATION FROM SEWER VIDEO INSPECTION		
SEWER ID S-MA70020213		
DISTANCE FROM MH ID S-MH50004812		
DISTANCE	DIAMETER	CLOCK
**** NO SERVICE JUNCTIONS ****		

WARNING
IF POWER EQUIPMENT OR EXPLOSIVES ARE TO BE USED FOR EXCAVATION ON THIS PROJECT THE CONTRACTOR MUST:
1) NOTIFY THE GAS COMPANY OF THE PROPOSED LOCATION OF EXCAVATION.
2) TAKE PRECAUTION TO AVOID DAMAGE TO GAS COMPANY INSTALLATIONS.
SEE PROVINCIAL REGULATION 210/72 FOR DETAILS

FOR INDEX SEE 11643



LOCATION APPROVED UNDERGROUND STRUCTURES

SUPV. U/G STRUCTURES COMMITTEE _____ DATE _____

NOTE:
LOCATION OF UNDERGROUND STRUCTURES AS SHOWN ARE BASED ON THE BEST INFORMATION AVAILABLE BUT NO GUARANTEE IS GIVEN THAT ALL EXISTING UTILITIES ARE SHOWN OR THAT THE GIVEN LOCATIONS ARE EXACT. CONFIRMATION OF EXISTENCE AND EXACT LOCATION OF ALL SERVICES MUST BE OBTAINED FROM THE INDIVIDUAL UTILITIES BEFORE PROCEEDING WITH CONSTRUCTION.

B.M. ELEV.				
NO.	REVISIONS	DATE	BY	

DESIGNED BY	JKH	CHECKED BY	HAK
DRAWN BY	DML	APPROVED BY	BWB
SCALE:		RELEASED FOR CONSTRUCTION	ORIGINAL SIGNED
HORIZONTAL	1:750		K. ZUREK
VERTICAL			
DATE	18/01/15	DATE	2018 03 12

ENGINEER'S SEAL

ORIGINAL SIGNED BY
H.A. KATZ
2018 03 12

CONSULTANT DRAWING NUMBER

THE CITY OF WINNIPEG
WATER AND WASTE DEPARTMENT
ENGINEERING DIVISION

2017 SEWER RENEWALS
BY CIPP LINING - CONTRACT NO. 3
COTTONWOOD ROAD
MH AT COTTONWOOD ROAD (C) TO
PUMP STATION AT COTTONWOOD ROAD (N R)

SHEET 23 OF 25
CITY DRAWING NUMBER
11664