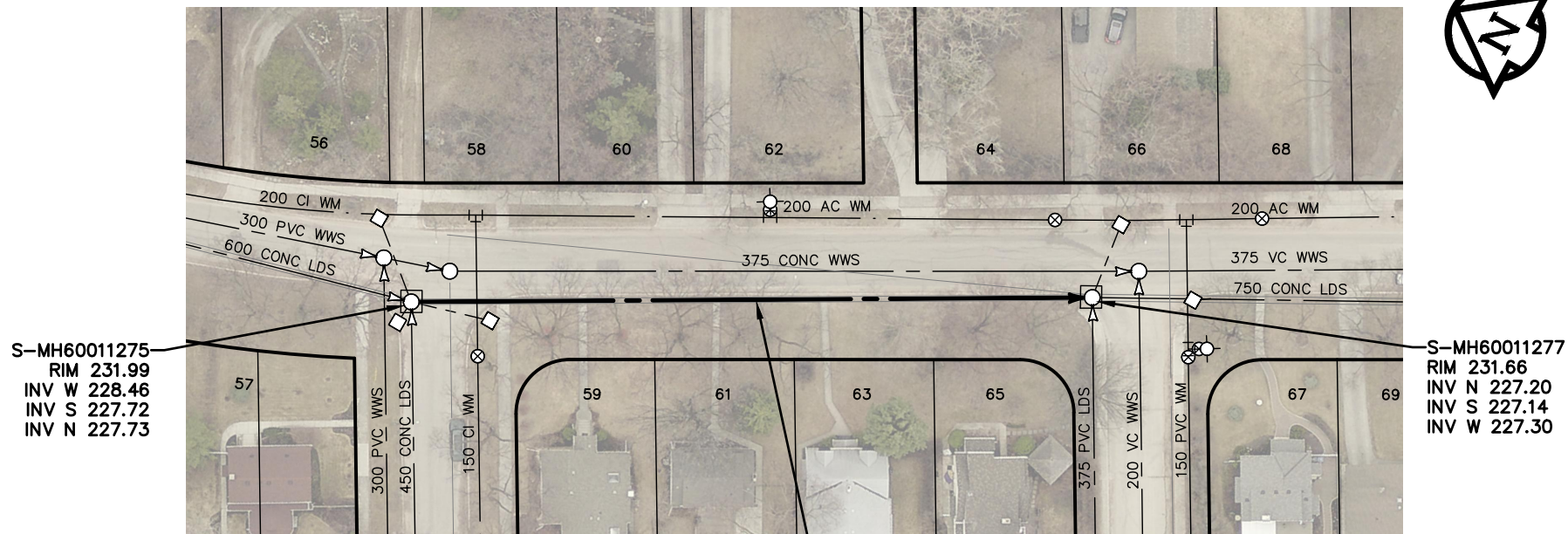


RIVERSIDE DRIVE



S-MH60011275
RIM 231.99
INV W 228.46
INV S 227.72
INV N 227.73

S-MH60011277
RIM 231.66
INV N 227.20
INV S 227.14
INV W 227.30

SEWER JUNCTION INFORMATION FROM SEWER VIDEO INSPECTION SEWER ID S-MA60013127		
DISTANCE FROM MH ID S-MH60011275		
DISTANCE	DIAMETER	CLOCK
**** NO SERVICE JUNCTIONS ****		

**77.4 OF 600 CONC LDS TO BE LINED
S-MA60013127
(FULLY DETERIORATED)**

WARNING

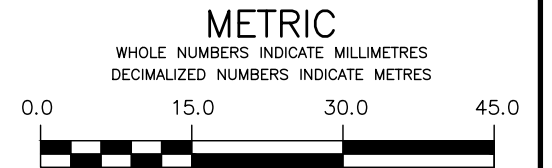
IF POWER EQUIPMENT OR EXPLOSIVES ARE TO BE USED FOR EXCAVATION ON THIS PROJECT THE CONTRACTOR MUST:

- 1) NOTIFY THE GAS COMPANY OF THE PROPOSED LOCATION OF EXCAVATION.
- 2) TAKE PRECAUTION TO AVOID DAMAGE TO GAS COMPANY INSTALLATIONS.

SEE PROVINCIAL REGULATION 210/72 FOR DETAILS

FOR INDEX SEE
11643

**ENGINEERS
GEOSCIENTISTS
MANITOBA**
Certificate of Authorization
MORRISON HERSHFIELD
No. 1736



LOCATION APPROVED UNDERGROUND STRUCTURES

SUPV. U/G STRUCTURES COMMITTEE DATE

NOTE:
LOCATION OF UNDERGROUND STRUCTURES AS SHOWN ARE BASED ON THE BEST INFORMATION AVAILABLE BUT NO GUARANTEE IS GIVEN THAT ALL EXISTING UTILITIES ARE SHOWN OR THAT THE GIVEN LOCATIONS ARE EXACT. CONFIRMATION OF EXISTENCE AND EXACT LOCATION OF ALL SERVICES MUST BE OBTAINED FROM THE INDIVIDUAL UTILITIES BEFORE PROCEEDING WITH CONSTRUCTION.

NO.	REVISIONS	DATE	BY



DESIGNED BY	JKH	CHECKED BY	HAK
DRAWN BY	DML	APPROVED BY	BWB
SCALE:		RELEASED FOR CONSTRUCTION	ORIGINAL SIGNED
HORIZONTAL	1:750		K. ZUREK
VERTICAL		DATE	2018 03 12

ENGINEER'S SEAL

ORIGINAL
SIGNED BY
H.A. KATZ
2018 03 12

CONSULTANT DRAWING NUMBER



THE CITY OF WINNIPEG WATER AND WASTE DEPARTMENT ENGINEERING DIVISION

2017 SEWER RENEWALS
BY CIPP LINING - CONTRACT NO. 3
RIVERSIDE DRIVE
MH AT WINDERMERE AVENUE TO
MH AT SOMERVILLE AVENUE

SHEET 16 OF 25
CITY DRAWING NUMBER

11657