

**PLAN**  
1:25  
SOUTH ABUTMENT SHOWN  
NORTH ABUTMENT SIMILAR

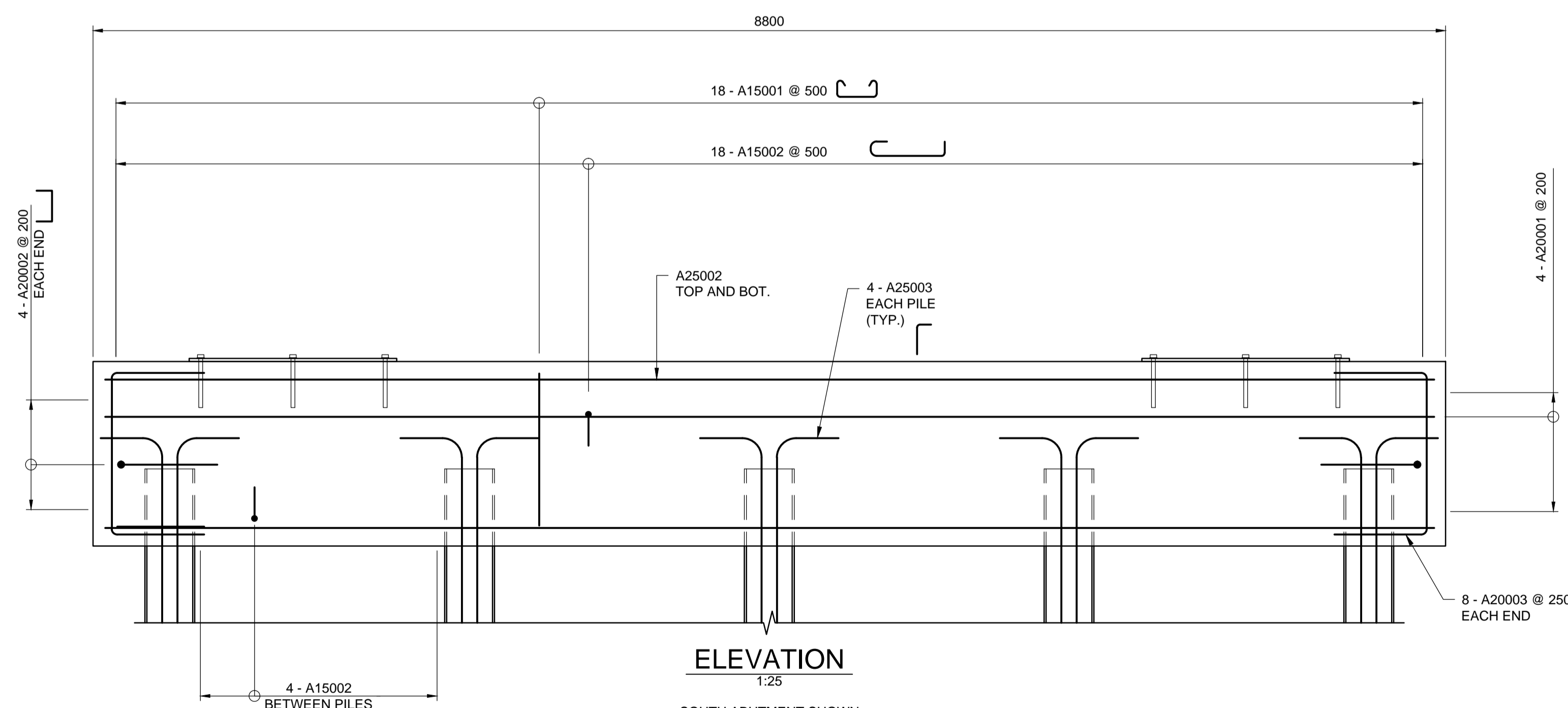
**BILL OF REINFORCING STEEL  
FOR ONE ABUTMENT**

MK. No.	TYPE	No.	LENGTH	MASS (kg)	
A25001	BENT	56	4000	1879.20	
A25002	STR.	20	8650	679.03	
A25003	BENT	40	3400	533.80	
A20001	STR.	8	8650	162.97	
A20002	BENT	8	2900	54.64	
A20003	BENT	16	1975	74.42	
A15001	BENT	18	2830	79.98	
A15002	BENT	34	2230	119.04	
A15003	STR.	4	8650	54.32	

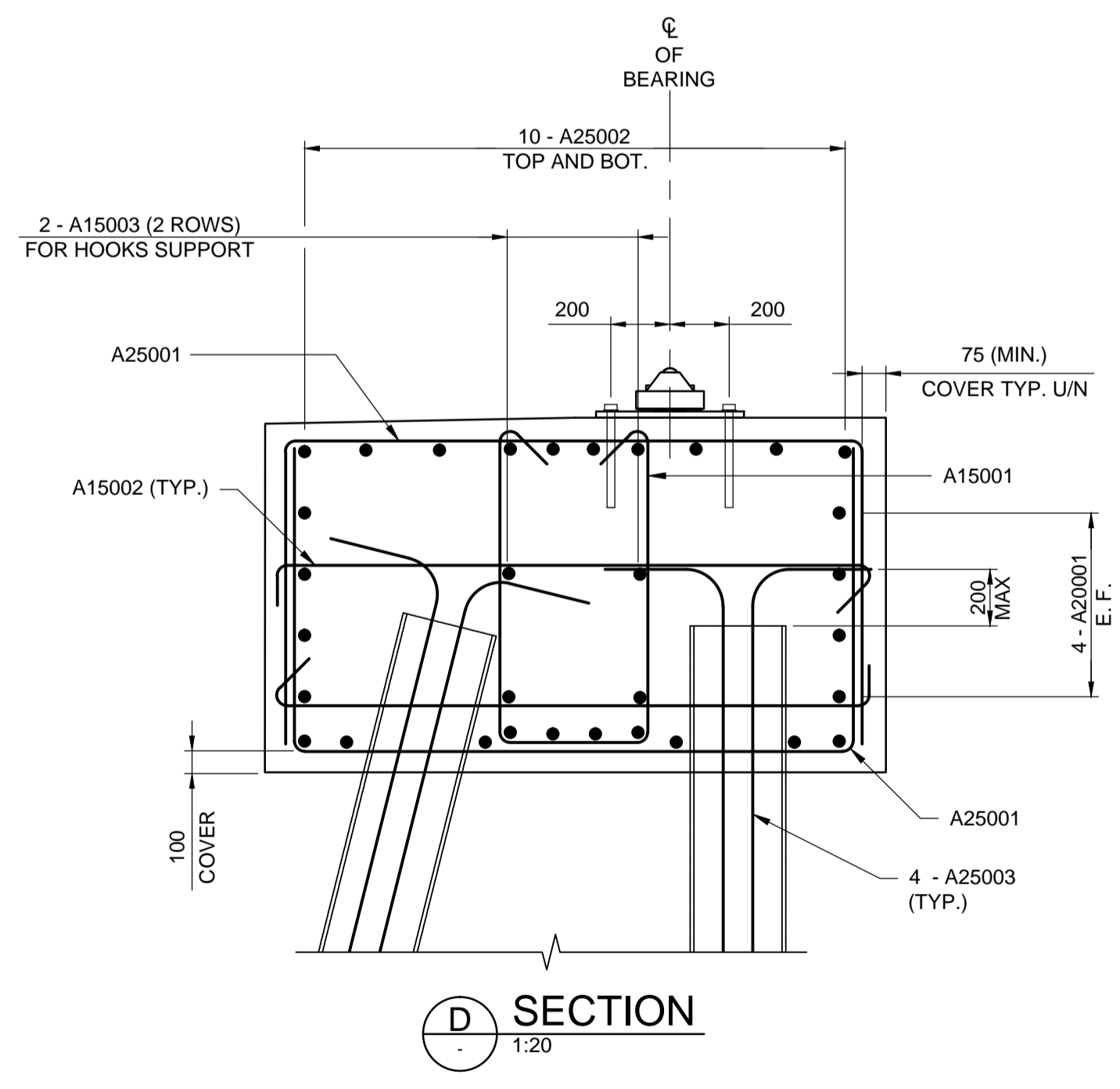
TOTAL MASS OF REINFORCING STEEL (ONE ABUTMENT) = 2637.40 kg  
 TOTAL MASS OF REINFORCING STEEL (TWO ABUTMENTS) = 5274.80 kg

TOTAL VOLUME OF STRUCTURAL CONCRETE (ONE ABUTMENT) = 22.37 m<sup>3</sup>  
 TOTAL VOLUME OF STRUCTURAL CONCRETE (TWO ABUTMENTS) = 44.74 m<sup>3</sup>

NOTE:  
SET REINFORCING STEEL TO AVOID THREADED RODS AND ANCHOR BOLTS. SEE SHEET No. 8.



**ELEVATION**  
1:25  
SOUTH ABUTMENT SHOWN  
NORTH ABUTMENT SIMILAR



**D SECTION**  
1:20

\\dillon.ca\dillon\_dfs\category\category CAD\CAD\164881\New Projectwise\164481-05\_ABUT\_REIN.dwg

DESIGNED BY	KGW	CHECKED BY	NR/MLB	SHOAL LAKE AQUEDUCT CROSSING AND ASSOCIATED ROADWORKS		CITY DRAWING NUMBER 1-0701A-S0003-001
DRAWN BY	RCB	APPROVED BY	GCL	ABUTMENT REINFORCEMENT DETAILS		SHEET 7 OF 14
HOR. SCALE	AS SHOWN	RELEASED FOR CONSTRUCTION		CONSULTANT PROJECT NUMBER 16-4481		CONSULTANT DRAWING NUMBER CS - 06
VERTICAL SCALE	AS SHOWN					
NO. REVISIONS	DATE	BY	DATE	2017.12.01	DATE	