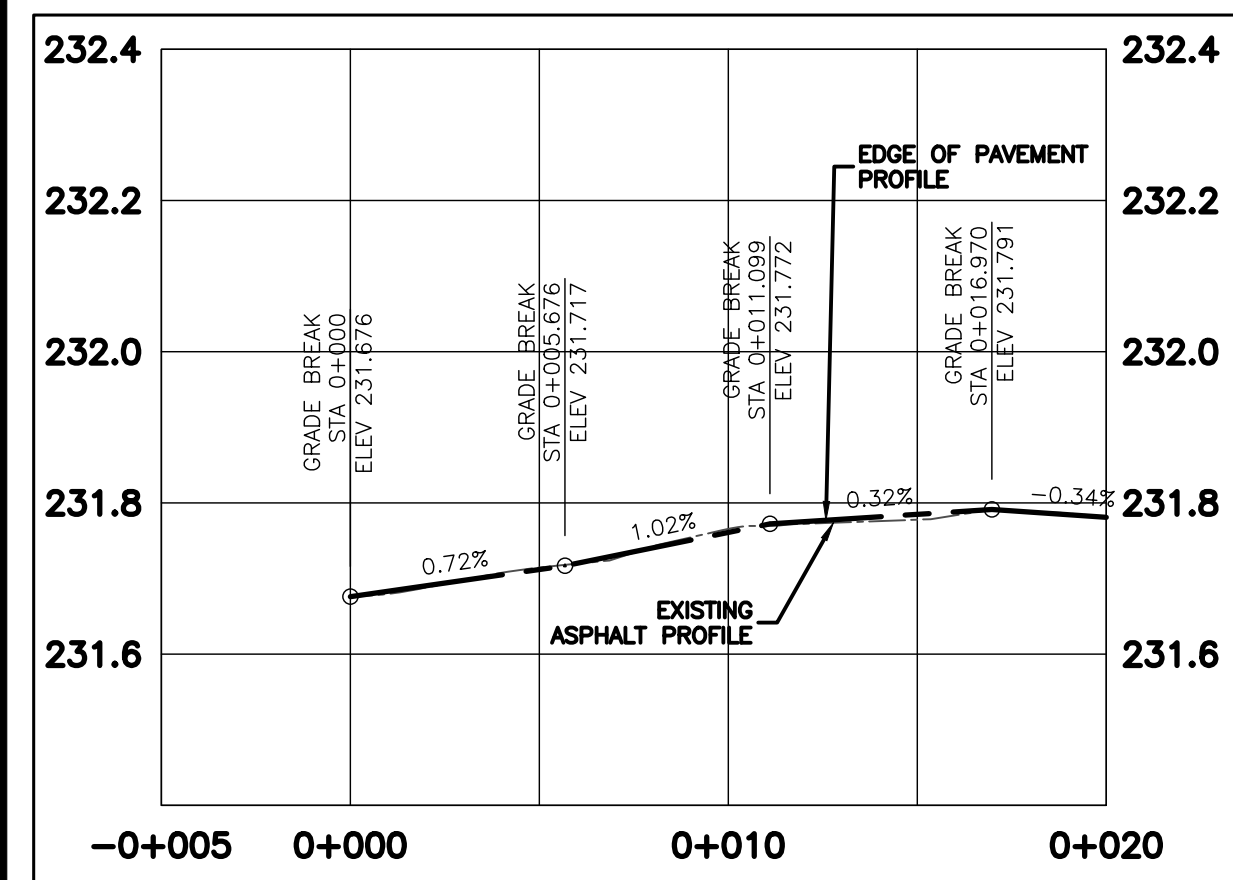
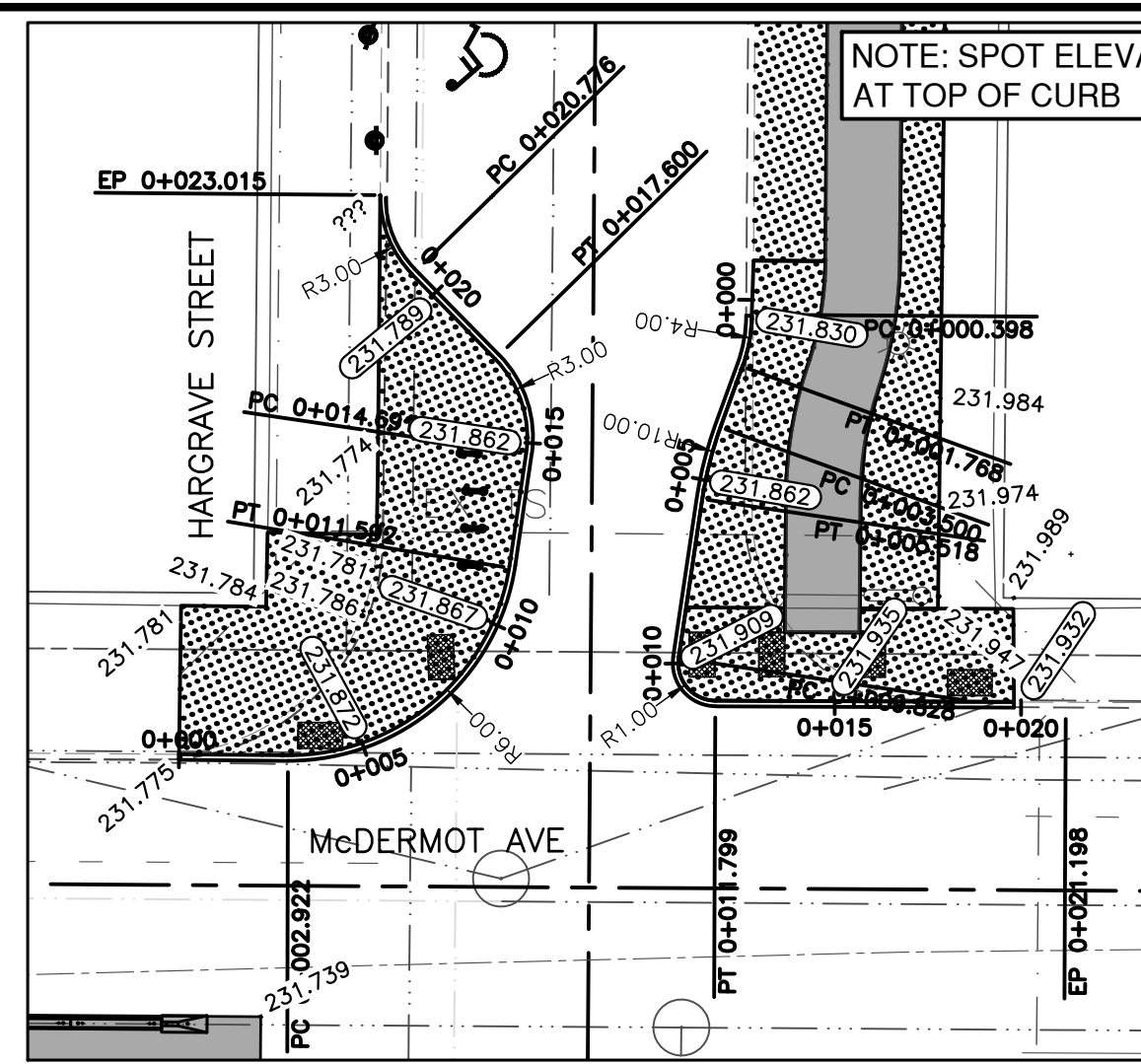


NORTHWEST PROFILE  
Scale H:1:200 V:1:10



NORTHEAST PROFILE  
Scale H:1:200 V:1:10

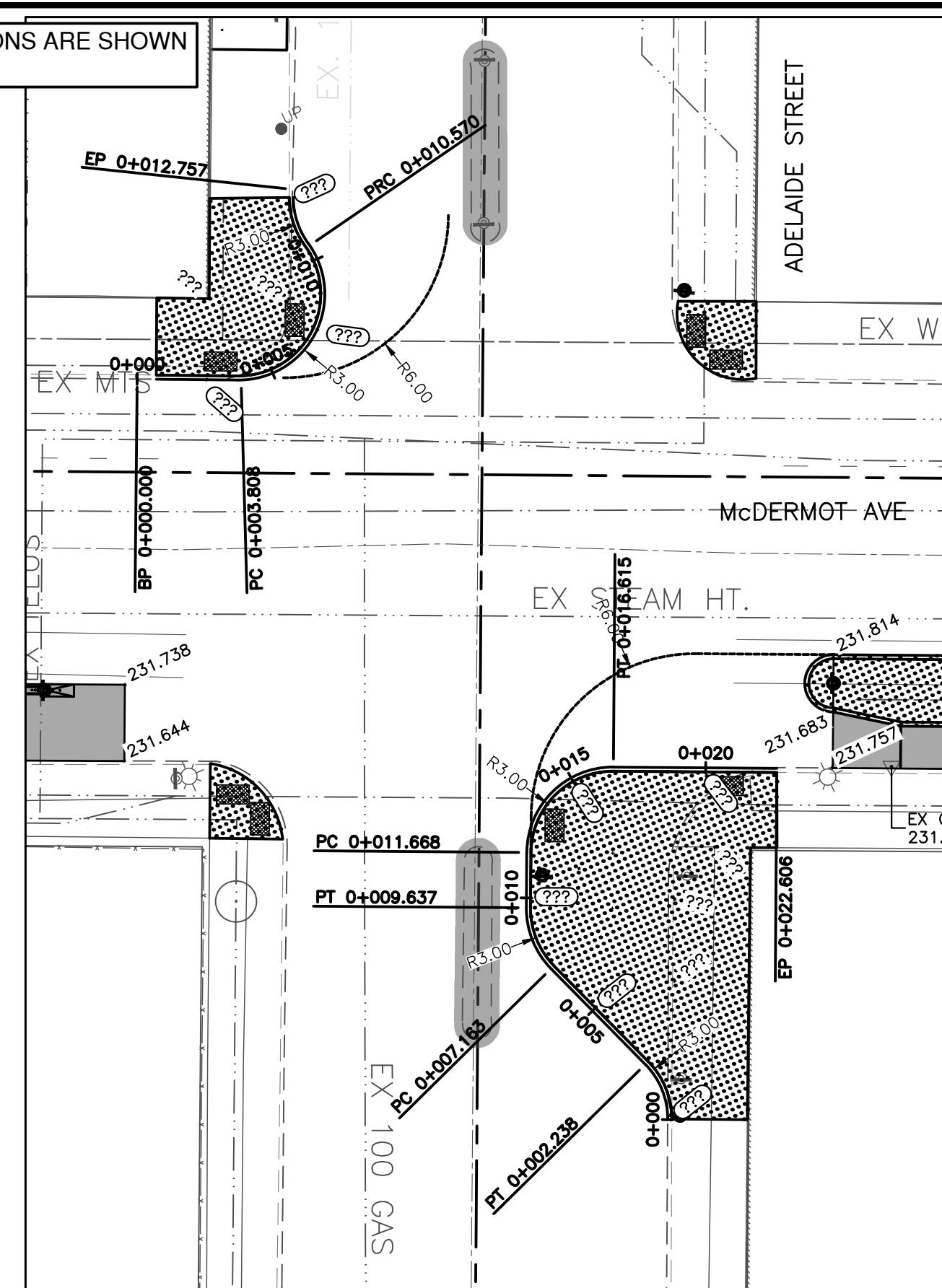


SPOT ELEVATIONS  
Scale H:1:200

**McDERMOT AVENUE AT HARGRAVE STREET  
NORTHWEST & NORTHEAST CURBS**

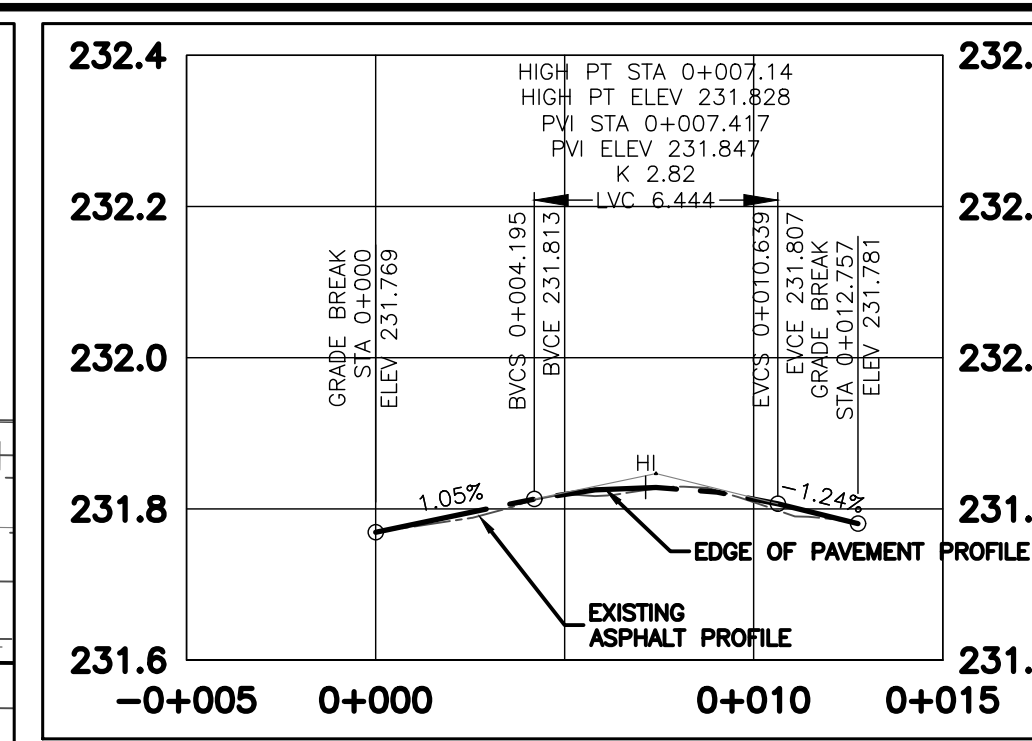
**GENERAL NOTES:**

- DESIGN GRADES ARE TO BE CONFIRMED ONCE PLANING HAS BEEN COMPLETED.
- ADJUST VALVES TO MATCH FINAL GRADES.
- ADJUST PAVEMENT MANHOLE AND CATCH BASIN FRAMES 50mm BELOW FINAL GRADE TO ACCOMMODATE A RISER RING FOR FINAL ASPHALT PAVING OPERATIONS.
- MAINTAIN TRAFFIC AS OUTLINED IN THE TRAFFIC MANAGEMENT SPECIFICATION.
- RADII CURB RENEWAL ON INTERSECTING STREETS & BACK LANES TO BE MODIFIED BARRIER CURB AS REQUIRED.
- CONCRETE REPAIRS TO BE CONFIRMED BY THE CONTRACT ADMINISTRATOR.
- CURB AND SIDEWALK RENEWAL AS DIRECTED BY THE CONTRACT ADMINISTRATOR.
- MAINTAIN 25-75mm OF REVEAL ON THE SIGNAL BASES.
- SEE DWG C22 FOR ADJUSTABLE CURB AND END UNIT DETAILS.

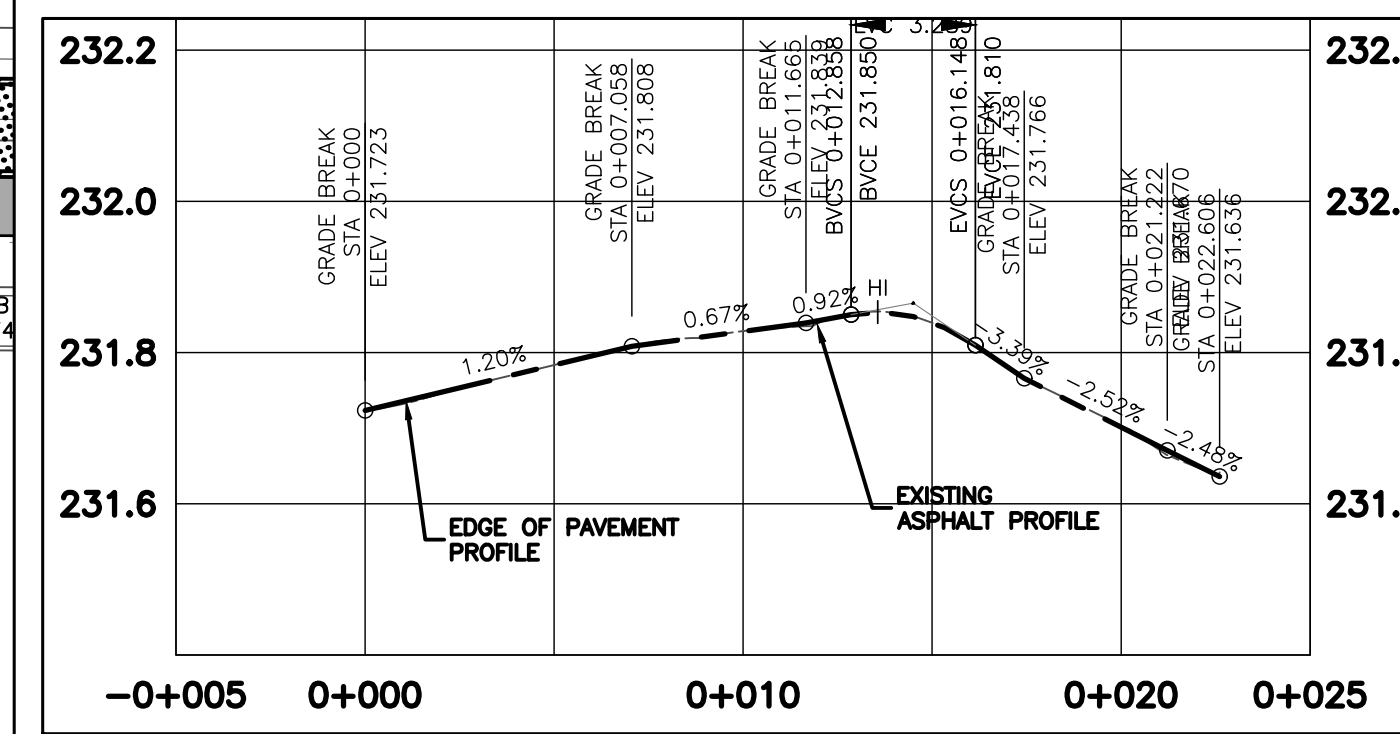


SPOT ELEVATIONS  
Scale H:1:200

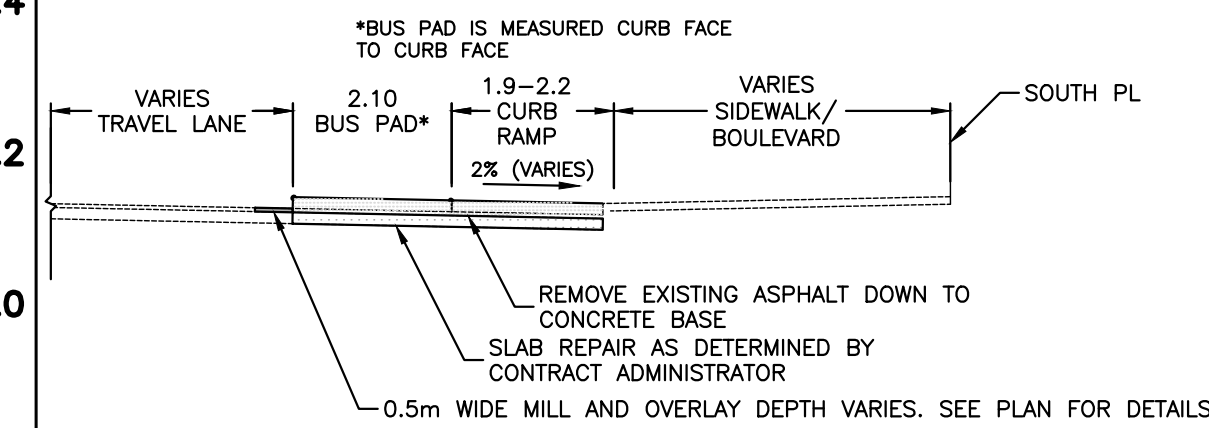
**McDERMOT AVENUE AT ADELAIDE STREET  
NORTHWEST & SOUTHEAST CURBS**



NORTHWEST PROFILE  
Scale H:1:200 V:1:10

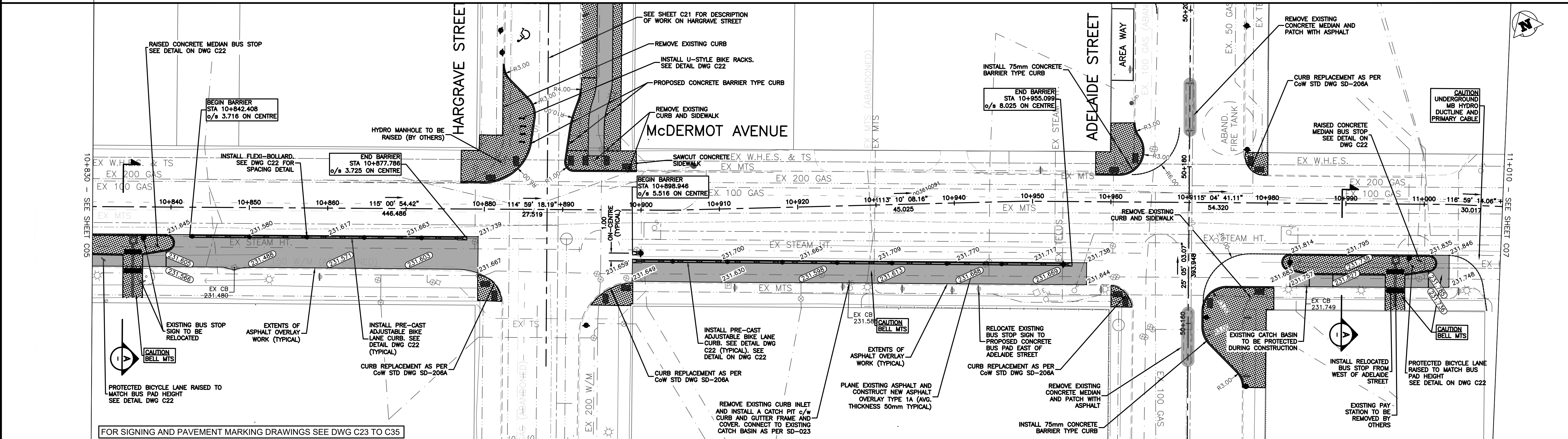


SOUTHEAST PROFILE  
Scale H:1:200 V:1:10



**TYPICAL SECTION - BUS PAD**  
NOT TO SCALE

**ENGINEERS  
GEOSCIENTISTS  
MANITOBA**  
Certificate of Authorization  
Urban Systems Ltd.  
No. 5053



150 mm W.M.	WATERMAIN	150 mm W.M.	HYDRO	ADJUSTABLE CURB
Hydrant	HYDRANT	Hydrant	M.T.S.	ADJUSTABLE END UNIT
Valve	VALVE	Valve	CONCRETE	DECORATIVE LIGHT
300mm L.D.S.	LAND DRAINAGE SEWER	300mm L.D.S.	ASPHALT	BOLLARD
250mm W.W.S.	WASTEWATER SEWER	250mm W.W.S.	PROPERTY LINE	
Manhole	MANHOLE	Manhole	SURVEY BAR	
Catch Basin	CATCH BASIN	Catch Basin	ELEVATION (35.750)	
Curb Inlet	CURB INLET	Curb Inlet	TREE	
Junctions	JUNCTIONS	Junctions	SIDEWALK DETECTABLE	
Culvert	CULVERT	Culvert	CONCRETE SIDEWALK	
Gas	GAS	Gas	FENCE	
EXISTING	LEGEND - PLAN	PROPOSED	EXISTING	LEGEND - PROFILE
			PROPOSED	

LOCATION APPROVED UNDERGROUND STRUCTURES	
SUPV. U/G STRUCTURES COMMITTEE	DATE
NOTE: LOCATION OF UNDERGROUND STRUCTURES AS SHOWN ARE BASED ON THE BEST INFORMATION AVAILABLE. BUT NO GUARANTEE IS GIVEN THAT ALL EXISTING UTILITIES ARE SHOWN OR THAT THE GIVEN LOCATIONS ARE EXACT. CONFIRMATION OF EXISTENCE AND EXACT LOCATION OF ALL SERVICES MUST BE OBTAINED FROM THE INDIVIDUAL UTILITIES BEFORE PROCEEDING WITH CONSTRUCTION.	

B.M. ELEV.	
A	60% DETAIL DESIGN 2018-01-28 GS
B	90% DETAIL DESIGN 2018-03-12 GS
C	ISSUED FOR TENDER 2018-03-28 GS
NO. REVISIONS	DATE BY

**URBAN systems**

DESIGNED BY: M. Nikolich  
DRAWN BY: M. Nikolich  
HOR. SCALE: 1:250  
VERTICAL: 1:25

CHECKED BY: G. Smith  
APPROVED BY: G. Propp  
RELEASED FOR CONSTRUCTION BY:

DATE: MARCH 28, 2018

ENGINEER'S SEAL  
**NOT FOR CONSTRUCTION**

**THE CITY OF WINNIPEG**  
PUBLIC WORKS DEPARTMENT  
ENGINEERING DIVISION

McDermot Bannatyne Adjustable Bike Lanes  
McDermot Avenue  
Station 10+830 to 11+010

SHEET 06 OF 36  
CAD FILE DRAWING NUMBER C02-C22-3354001101-PLN.DWG  
CITY DRAWING NUMBER P-3496-06

U:\Projects\_VAN\3354001101-D-Design\CAD\PROJ\SET 1\C02-C22-3354001101-PLN.dwg, C06, 2018-03-28 10:06 am mnikolich