

# **APPENDIX 'A'**

# **GEOTECHNICAL REPORT**

McDermot/Bannatyne Bike Lanes  
Summary of Pavement Thickness and Locations

Test Hole No.	Location Limits	Test Hole Location	Pavement Type	Thickness (mm)	Notes
DH18-01	Furby St. - Lydia St.	McDermot Ave.; 59.0m East of Furby St., 3.0m North of South curb	Asphalt	102	Bit reached maximum depth of 310 mm, concrete not retrieved
			Concrete	>208	
DH18-02	Lydia St. - Kate St.	McDermot Ave.; 53.0m East of Lydia St., 3.0m North of South curb	Asphalt	76	
			Concrete	241	
DH18-03	Kate St. - Juno St.	McDermot Ave.; 25.0m East of Kate St., 3.0m North of South curb	Asphalt	76	
			Concrete	229	
DH18-04	Juno St. - Isabel St.	McDermot Ave.; 15.0m East of Juno St., 3.0m North of South curb	Asphalt	51	
			Concrete	229	
DH18-05	Isabel St. - Harriet St.	McDermot Ave.; 30.0m East of Isabel St., 3.0m North of South curb	Asphalt	38	
			Concrete	203	
DH18-06	Harriet St. - Gertie St.	McDermot Ave.; 21.0m West of Gertie St., 3.0m North of South curb	Asphalt	76	
			Concrete	216	
DH18-07	Gertie St. - Frances St.	McDermot Ave.; 32.0m East of Gertie St., 3.0m North of South curb	Asphalt	51	
			Concrete	203	
DH18-08	Frances St. - Ellen St.	McDermot Ave.; 33.0m East of Frances St., 3.0m North of South curb	Asphalt	51	
			Concrete	152	
DH18-09	Ellen St. - Dagmar St.	McDermot Ave.; 21.0m East of Ellen St., 3.0m North of South curb	Asphalt	51	
			Concrete	203	
DH18-10	Dagmar St. - Hargrave St.	McDermot Ave.; 29.0m East of Dagmar St., 3.2m North of South curb	Asphalt	44	
			Concrete	203	
DH18-11	Hargrave St. - Adelaide St.	McDermot Ave.; 39.0m East of Hargrave St., 5.5m North of South curb	Asphalt	51	
			Concrete	203	
DH18-12	Adelaide St. - Princess St.	McDermot Ave.; 15.0m East of Adelaide St., 5.4m North of South curb	Asphalt	76	
			Concrete	191	
DH18-13	Princess St. - King St.	McDermot Ave.; 35.0m East of Princess St., 4.5m North of South curb	Asphalt	102	
			Concrete	191	
DH18-14	Main St. - Rorie St.	McDermot Ave.; 30.5m East of Main St., 5.6m North of South curb	Asphalt	114	
			Concrete	178	

McDermot/Bannatyne Bike Lanes  
Summary of Pavement Thickness and Locations

Test Hole No.	Location Limits	Test Hole Location	Pavement Type	Thickness (mm)	Notes
DH18-15	Rorie St. - Ship St.	McDermot Ave.; 20.0m East of Rorie St., 5.0m North of South curb	Asphalt	64	Concrete was crushed and not retrieved
			Concrete	178	
DH18-16	Rorie St. - Ship St.	McDermot Ave.; 120.0m East of Rorie St., 4.0m North of South curb	Asphalt	70	
			Concrete	178	
DH18-17	Rorie St. - Ship St.	McDermot Ave.; 197.0m East of Kate St., 3.6m North of South curb	Asphalt	127	No concrete under asphalt
			Concrete	0	
DH18-18	John Hirsch Pl. - Rorie St.	Bannatyne Ave.; 3.0m West of John Hirsch Pl., 5.3m South of North curb	Asphalt	89	Concrete was crushed and not retrieved
			Concrete	165	
DH18-19	Rorie St. - Main St.	Bannatyne Ave.; 42.0m West of Rorie St., 5.6m South of North curb	Asphalt	127	Bit reached maximum depth of 310 mm, concrete not retrieved
			Concrete	>183	
DH18-20	Rorie St. - Main St.	Bannatyne Ave.; 56.0m East of Main St., 3.0m South of North curb	Asphalt	89	Concrete partially retrieved
			Concrete	203	
DH18-21	Princess St. Intersection	7.0m South of North curb lane on Bannatyne Ave., 2.7m East of West curb lane on Princess St.	Asphalt	307	Bit reached maximum depth of 310mm. Concrete below asphalt of undetermined thickness.
			Concrete	N.A.	
DH18-22	Adelaide St. Hargrave St.	Bannatyne Ave.; 26.0m West of Adelaide St., 5.8m South of North curb	Asphalt	76	
			Concrete	210	
DH18-23	Hargrave St. - Dagmar St.	Bannatyne Ave.; 39.0m West of Hargrave St., 5.0m South of North curb	Asphalt	13	
			Concrete	178	
DH18-24	Dagmar St. - Ellen St.	Bannatyne Ave.; 23.0m West of Dagmar St., 5.2m South of North curb	Asphalt	102	Bit reached maximum depth of 310 mm, concrete not retrieved
			Concrete	>208	
DH18-25	Ellen St. - Frances St.	Bannatyne Ave.; 42.0m West of Ellen St., 5.2m South of North curb	Asphalt	102	
			Concrete	203	
DH18-26	Frances St. - Gertie St.	Bannatyne Ave.; 39.0m West of Frances St., 5.5m South of North curb	Asphalt	89	
			Concrete	191	
DH18-27	Gertie St. - Harriet St.	Bannatyne Ave.; 31.0m West of Gertie St., 5.6m South of North curb	Asphalt	51	
			Concrete	184	
DH18-28	Harriet St. - Isabel St.	Bannatyne Ave.; 24.0m West of Harriet St., 5.9m South of North curb	Asphalt	64	
			Concrete	203	

McDermot/Bannatyne Bike Lanes  
Summary of Pavement Thickness and Locations

Test Hole No.	Location Limits	Test Hole Location	Pavement Type	Thickness (mm)	Notes
DH18-29	Isabel St. - Juno St.	Bannatyne Ave.; 45.0m West of Isabel St., 5.5m South of North curb	Asphalt	70	
			Concrete	191	
DH18-30	Juno St. - Kate St.	Bannatyne Ave.; 41.0m West of Juno St., 5.4m South of North curb	Asphalt	76	
			Concrete	165	
DH18-31	Kate St. - Lydia St.	Bannatyne Ave.; 29.0m West of Kate St., 6.2m South of North curb	Asphalt	51	
			Concrete	191	
DH18-32	Lydia St. - Furby St.	Bannatyne Ave.; 32.0m West of Lydia St., 5.5m South of North curb	Asphalt	57	
			Concrete	191	
DH18-33	Furby St. - Sherbrook St.	Bannatyne Ave.; 37.0m West of Furby St., 5.3m South of North curb	Asphalt	38	
			Concrete	178	
DH18-34	McDermot Ave.- Bannatyne Ave.	Ellen St.; 27.0m North of McDermot Ave., 6.2m East of West curb	Asphalt	70	
			Concrete	191	



McDermot/Bannatyne Bike Lanes  
60561120  
McDermot Ave.  
Furby St. - Lydia St.

PM 2:16 JAN/24/2018

DH18-01



McDermot/Bannatyne Bike Lanes  
60561120  
McDermot Ave.  
Lydia St. - Kate St.

PM 4:53 JAN/24/2018

DH18-02



DH18-03



DH18-04



DH18-05



DH18-06



DH18-07



DH18-08





DH18-09



DH18-10



DH18-11



DH18-12



DH18-13



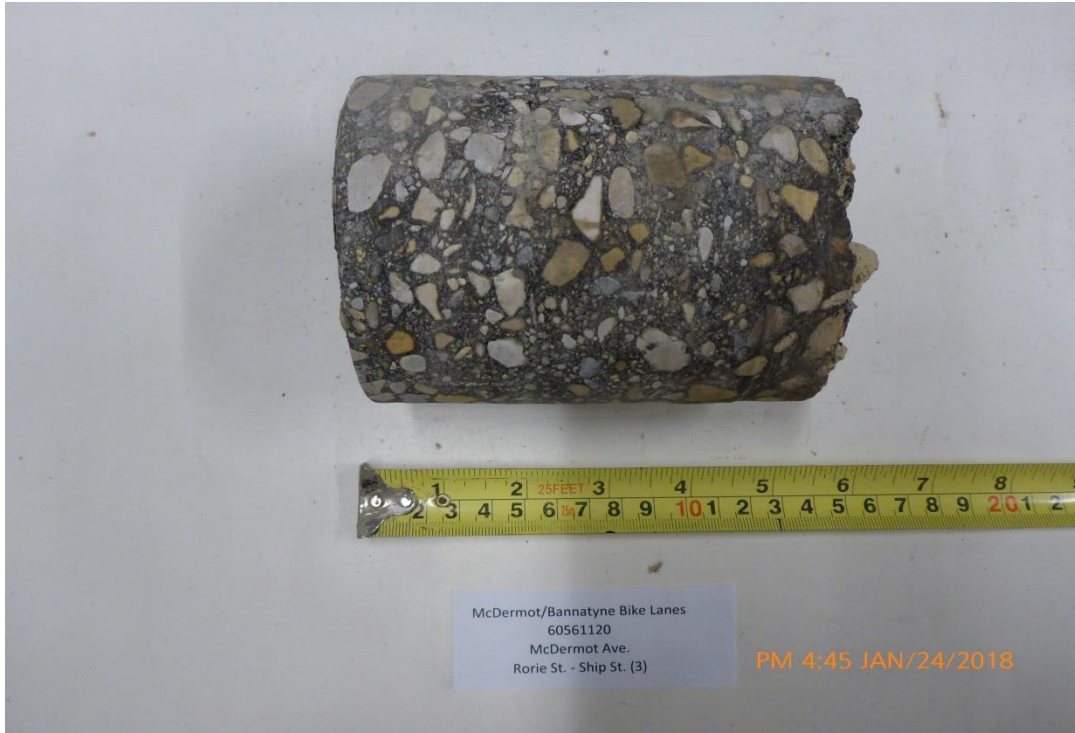
DH18-14



DH18-15



DH18-16



DH18-17



DH18-18



DH18-19



DH18-20



DH18-21



DH18-22



DH18-23



DH18-24





DH18-25



DH18-26



DH18-27



DH18-28



DH18-29



DH18-30



McDermot/Bannatyne Bike Lanes  
60561120  
Bannatyne Ave.  
Kate St. - Lydia St.

PM 4:16 JAN/24/2018

DH18-31



McDermot/Bannatyne Bike Lanes  
60561120  
Bannatyne Ave.  
Lydia St. - Furby St.

PM 4:33 JAN/24/2018

DH18-32



DH18-33



DH18-34