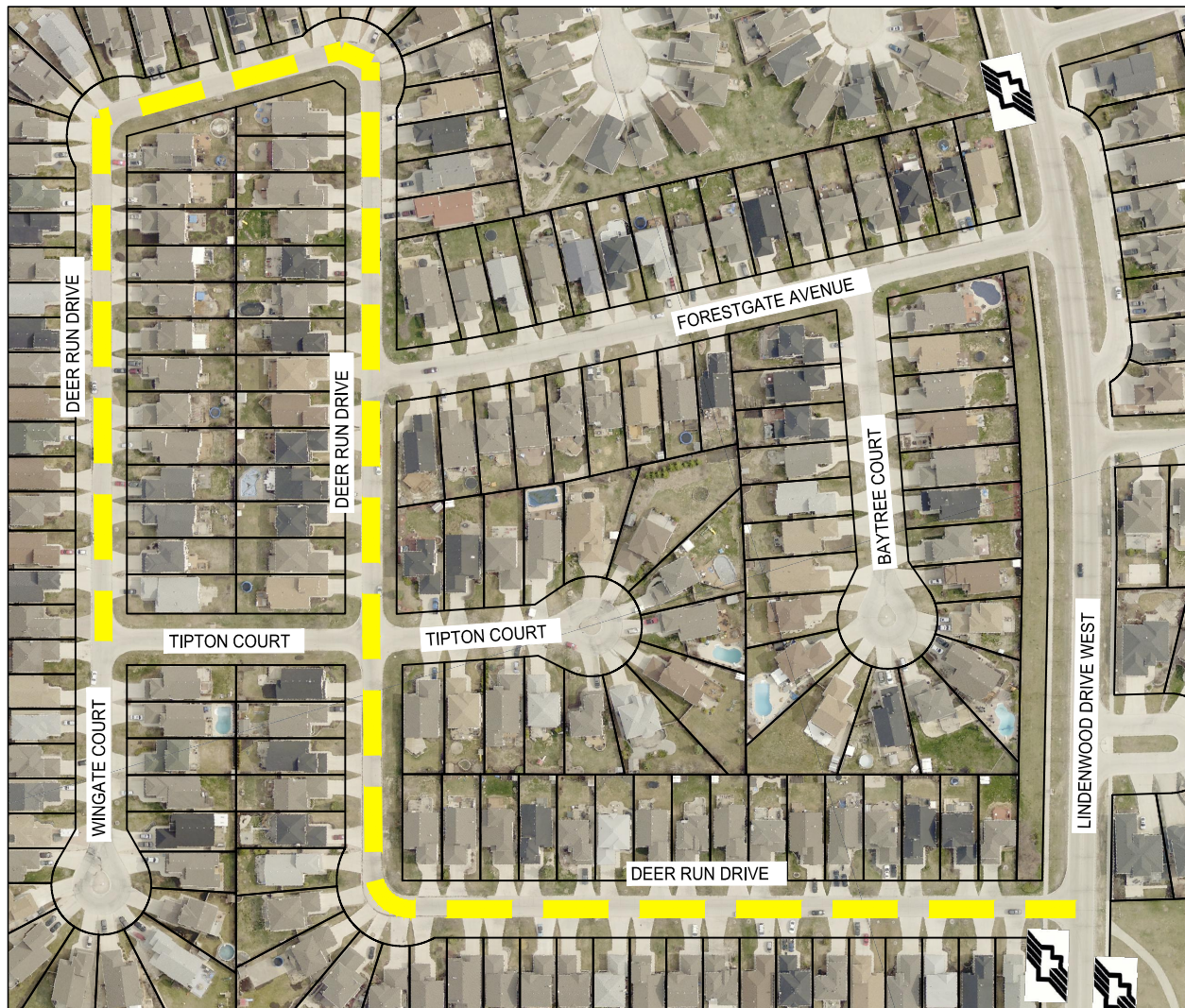


BARBARA CRESCENT - NORLORNE DRIVE TO NORLORNE DRIVE
SCALE 1:2500



OCEAN RIDGE DRIVE - DOVERCOURT DRIVE TO LAUREL RIDGE DRIVE
SCALE 1:2500



DEER RUN DRIVE - TIPTON COURT TO LINDENWOOD DRIVE WEST
SCALE 1:2500






COLBY AVENUE - BARNES STREET TO SHORE STREET
SCALE 1:2500



PRELIMINARY

LEGEND

-  BUS ROUTE
-  SCHOOL LOCATION
-  LIMIT OF CONSTRUCTION

NOTE: These design documents are prepared solely for the use by the party with whom the design professional has entered into a contract and there are no representations of any kind made by the design professional to any party with whom the design professional has not entered into a contract.

METRIC

WHOLE NUMBERS INDICATE MILLIMETRES
DECIMALIZED NUMBERS INDICATE METRES



LOCATIONS APPROVED UNDERGROUND STRUCTURES

SCORED BY: _____ DATE: _____
SUPPLY STRUCTURES _____
LOCATION OF UNDERGROUND STRUCTURES AS SHOWN ARE BASED ON THE BEST INFORMATION AVAILABLE BUT NO GUARANTEE IS GIVEN THAT ALL EXISTING UTILITIES ARE SHOWN OR THAT THE GIVEN LOCATIONS ARE EXACT CONFIRMATION OF EXISTENCE AND EXACT LOCATION OF ALL SERVICES MUST BE OBTAINED FROM THE INDIVIDUAL UTILITIES BEFORE PROCEEDING WITH CONSTRUCTION.

NO.	REVISIONS	DATE	BY
2	ISSUED FOR TENDER	04/06/18	MV
1	ISSUED FOR CLIENT REVIEW	28/05/18	MV



WSP Canada Group Limited
Suite 111 - 93 Lombard Ave
Winnipeg, MB R3B 3B1
T. 204.943.3178
F. 204.943.4948
www.wsp.com

DESIGNED BY	MV	CHECKED BY	VM
DRAWN BY	TW	APPROVED BY	VM
HOR. SCALE	1:2500	RELEASED FOR CONSTRUCTION	DATE
VERTICAL	-		
DATE	28-MAY-2018		

ENGINEER'S SEAL
CONSULTANT ACAD DWG. NO.
18M-00748-02

THE CITY OF WINNIPEG
PUBLIC WORKS DEPARTMENT
ENGINEERING SERVICES DIVISION

2018 THIN BITUMINOUS OVERLAY (TBO) PROGRAM
BARBARA CRESCENT, OCEAN RIDGE DRIVE, DEER RUN DRIVE, COLBY AVENUE
ASPHALT OVERLAY

CITY DRAWING NUMBER
SHEET 2 OF 4
BID NO.
529-2018

Jun 04, 2018 - 2:30pm
P:\2018\18M-00748-02 - 2018 TBO Program and Local Improvements\08 WSP Drawings\03 Construction Drawings\Contract 2\18M-00748-02_Contract 2_Plan.dwg - tab:02