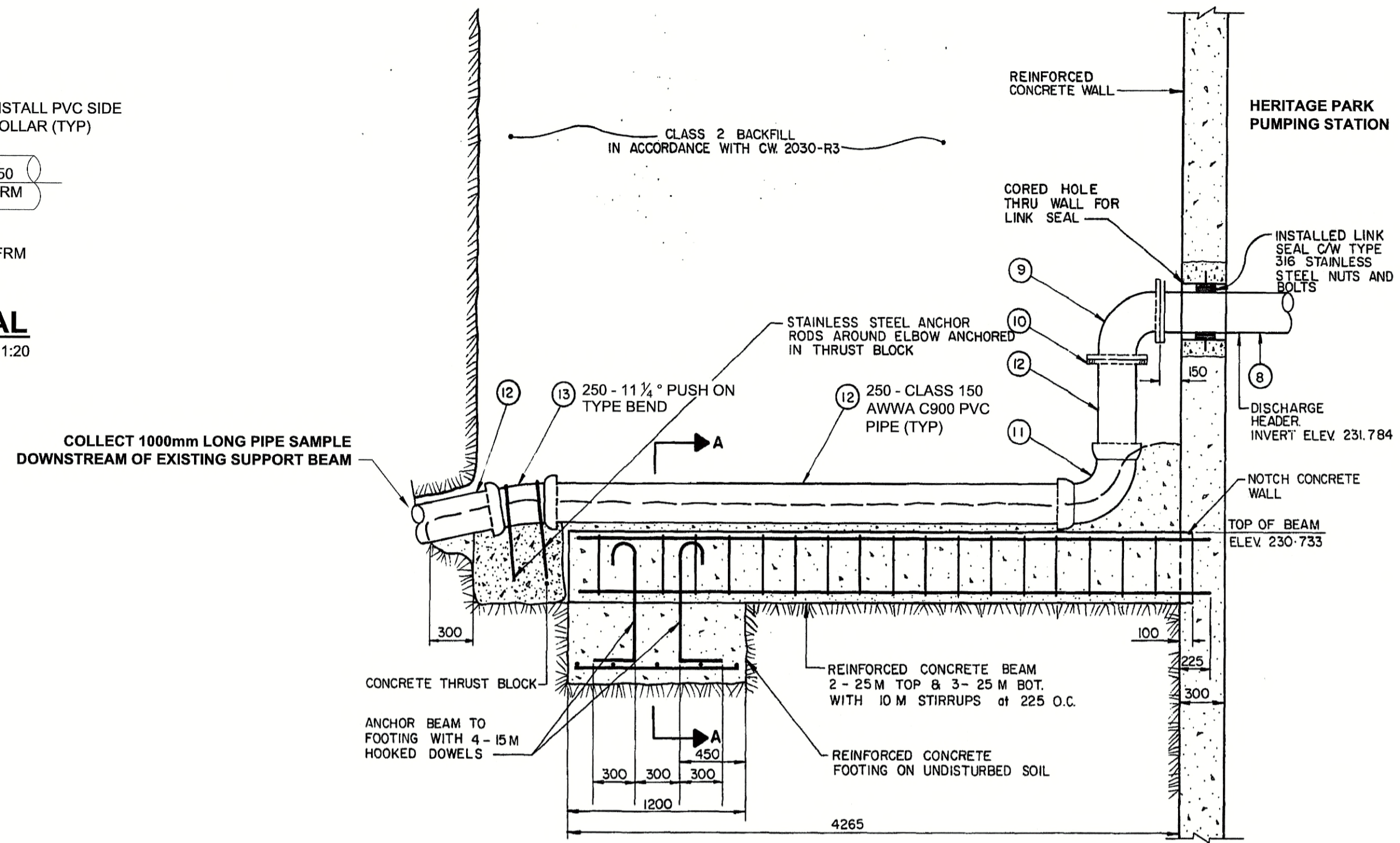


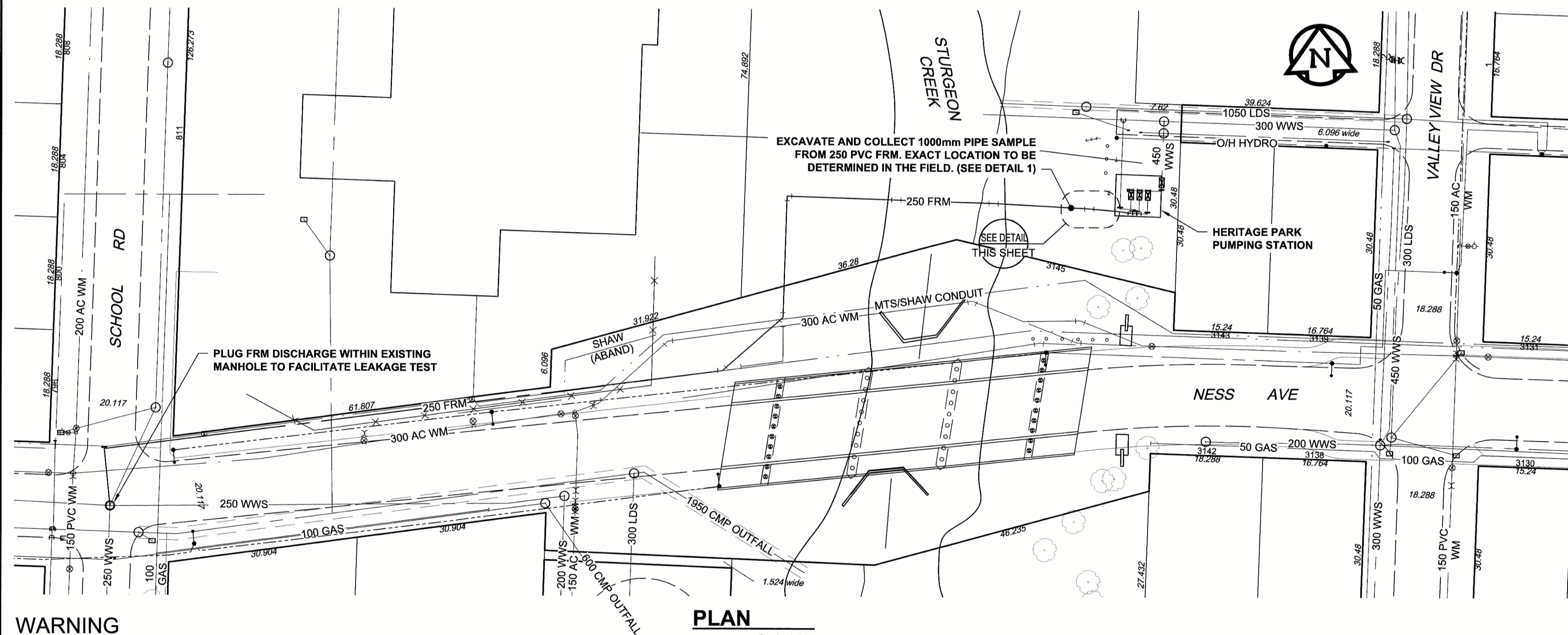
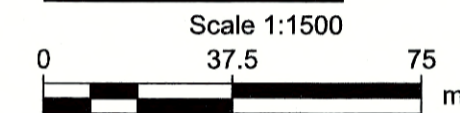
**1 | PVC SAMPLE REMOVAL**  
Scale: 1:20



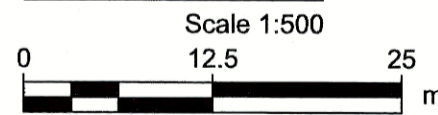
**EXISTING SUPPORT BEAM DETAIL**  
Scale N.T.S.



**SITE PLAN**



**PLAN**



**METRIC**

WHOLE NUMBERS INDICATE MILLIMETRES  
DECIMALIZED NUMBERS INDICATE METRES

**NOTES:**

**SEQUENCE OF SAMPLING WORK:**

1. LOCATE PIPE BY SOFT DIG METHODS
2. COMPLETE EXCAVATION AND INSTALL SHORING
3. VERIFY PIPE MATERIAL AND OUTSIDE DIAMETER
4. VERIFY ALL REPAIR COMPONENTS ARE ON HAND AND PRE-ASSEMBLED PRIOR TO SHUTDOWN OF PUMP STATION
5. COORDINATE PIPE SAMPLE COLLECTION WITH PUMP STATION SHUTDOWN (BY CITY)
6. BACKFILL AND RESTORE SITE

**SEQUENCE OF LEAKAGE TESTING WORK:**

1. INSTALL FLUSHING AND TESTING EQUIPMENT WITHIN STATION. UTILIZE EXISTING VALVED PORTS
2. COORDINATE PUMP STATION SHUTDOWN WITH CITY
3. PLUG DISCHARGE END OF FRM
4. COMPLETE LEAKAGE TEST
5. REMOVE PLUG
6. RESTORE PUMP STATION OPERATION (BY CITY) AND REMOVE EQUIPMENT

**CONSTRUCTION NOTES:**

1. RESTORE BOULEVARDS, SIDEWALKS AND ROADWAYS DAMAGED DURING CONSTRUCTION.
2. UNDERTAKE FLOW MONITORING IN ACCORDANCE WITH SPECIFICATIONS DURING PUMP STATION SHUTDOWN.



**KEY PLAN**

**WARNING**

IF POWER EQUIPMENT OR EXPLOSIVES ARE TO BE USED FOR EXCAVATION ON THIS PROJECT, THE CONTRACTOR MUST:  
1) NOTIFY THE GAS COMPANY OF THE PROPOSED LOCATION OF EXCAVATION.  
2) TAKE PRECAUTION TO AVOID DAMAGE TO GAS COMPANY INSTALLATIONS.  
SEE PROVINCIAL REGULATION 140/92 FOR DETAILS

150 WM	WATERMAIN	150 WM	CURB STOP	150 WM	WATERMAIN	150 WM
HYDRANT	HYDRANT	REDUCER	REDUCER	HYDRANT	HYDRANT	REDUCER
VALVE	VALVE	COUPLING	COUPLING	VALVE	VALVE	COUPLING
300 LDS	LAND DRAINAGE SEWER	300 LDS	ANODE	300 LDS	LAND DRAINAGE SEWER	300 LDS
250 WWS	WASTE WATER SEWER	250 WWS	HYDRO	250 WWS	WASTE WATER SEWER	250 WWS
MANHOLE	MANHOLE	MTS	MTS	MANHOLE	MANHOLE	MTS
CATCH BASIN	CATCH BASIN	GAS	GAS	CATCH BASIN	CATCH BASIN	GAS
CURB INLET	CURB INLET	TESTHOLE	TESTHOLE	CURB INLET	CURB INLET	TESTHOLE
CULVERT	CULVERT	LAMP STANDARD	LAMP STANDARD	CULVERT	CULVERT	LAMP STANDARD
PIPE ABANDONMENTS	PIPE ABANDONMENTS	TREE	TREE	PIPE ABANDONMENTS	PIPE ABANDONMENTS	TREE
SURVEY BAR	SURVEY BAR			SURVEY BAR	SURVEY BAR	
EXISTING	LEGEND - PLAN	NEW	LEGEND - PLAN	EXISTING	LEGEND - PROFILE	NEW

**LOCATION APPROVED**

UNDERGROUND STRUCTURES

SUPR. U/G STRUCTURES DATE COMMITTEE

NOTE:  
LOCATION OF UNDERGROUND STRUCTURES AS SHOWN ARE BASED ON THE BEST INFORMATION AVAILABLE. BUT NO GUARANTEE IS GIVEN THAT ALL EXISTING UTILITIES ARE SHOWN OR THAT THE GIVEN LOCATIONS ARE EXACT. CONFIRMATION OF EXISTENCE AND EXACT LOCATION OF ALL SERVICES MUST BE OBTAINED FROM THE INDIVIDUAL UTILITIES BEFORE PROCEEDING WITH CONSTRUCTION.

0	ISSUED FOR CONSTRUCTION	18/06/01	KLC
NO.	REVISIONS	YYMMDD	BY

<b>AECOM</b>	
DESIGNED BY	NJK
CHECKED BY	[Signature]
DRAWN BY	KLC
APPROVED BY	[Signature]
HOR. SCALE	AS NOTED
VERT. SCALE	N/A
RELEASED FOR CONSTRUCTION	[Signature]
DATE	June 4, 2018



Certificate of Authorization

AECOM Canada Ltd.

No. 4671 Date: June 4/18

PROFESSIONAL'S SEAL  
  
 CONSULTANT DRAWING NO.  
 60549028-SHT-30-0000-C-1005

**THE CITY OF WINNIPEG**  
**WATER AND WASTE DEPARTMENT**  
 PROVISION OF PIPELINE ACCESS MODIFICATIONS, CLEANING AND SUPPORT SERVICES FOR RIVER CROSSING INSPECTIONS - PHASE TWO  
 SHEET 6 OF 7  
 CITY DRAWING NUMBER 11822  
 REV 0  
 SITE 5  
 HERITAGE PARK FORCE MAIN