

ALL DRAWINGS AND SPECIFICATIONS ARE THE PROPERTY OF THE CONSULTANT. NO REPRODUCTIONS MAY BE MADE WITHOUT THE CONSENT OF THE CONSULTANT AND ALL REPRODUCTIONS MUST BEAR THE NAME OF THE CONSULTANT. THE CONTRACTOR SHALL VERIFY ALL DIMENSIONS, DATUMS AND LEVELS NOTED ON THE DRAWINGS AND BE RESPONSIBLE FOR THE ACCURACY OF THE INFORMATION. REPORTING ANY ERRORS OR OMISSIONS TO THE ENGINEER FOR ADJUSTMENTS. THIS DRAWING SHALL NOT BE SCALED.

HEATING SCHEDULE						
TYPE	WATTS	VOLTAGE	DESCRIPTION	MANUFACTURER	CATALOGUE NO.	NOTES
FF-2	2000	240	FORCE FLOW	OUELLET	OACP2000	2
FF-4	4000	240	FORCE FLOW	OUELLET	OAC0400	2

SPECIFIC HEATING NOTES:
 1. C/W BUILT-IN THERMOSTAT OR WIRED TO REMOTE THERMOSTAT AS SHOWN ON DRAWINGS.
 2. RECESSED UNLESS OTHERWISE INDICATED. C/W BUILT-IN THERMOSTAT UNLESS OTHERWISE INDICATED.
 3. C/W BUILT-IN THERMOSTAT. MOUNT SECURELY WHERE INDICATED TO THE SATISFACTION OF THE ENGINEER.

GENERAL HEATING NOTES:
 A. VOLTAGE TO BE AS INDICATED ABOVE UNLESS OTHERWISE NOTED ON DRAWINGS.

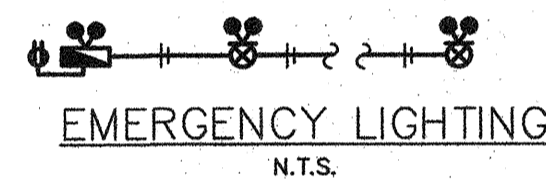
MOTOR SCHEDULE								
NO.	DESCRIPTION	LOCATION	VOLTAGE	HP/W/MCA	C.B.	COND.	STARTER	NOTES
HRV-1	HRV	BUILDING SERVICES	120V-1PH	170 W	15A-1P	#12	-	1
HC-1	HEAT COIL	BUILDING SERVICES	240V-1PH	5000 W	30A-2P	#10	-	1
HC-2	HEAT COIL	BUILDING SERVICES	240V-1PH	5000 W	30A-2P	#10	-	1
HWT-1	HOT WATER TANK	BUILDING SERVICES	240V-1PH	2000 W	15A-2P	#12	-	1
P-1	PUMP	BUILDING SERVICES	120V-1PH	1/3HP	20A-1P	#12	-	1
WP-1	WELL PUMP	SITE LOCATE	240V-1PH	1HP	20A-2P	#12	-	1
WS-1	WATER SOFTENER	BUILDING SERVICES	120V-1PH	-	15A-1P	#12	-	1

SPECIFIC NOTES:
 1. WIRE AND CONNECT AS REQUIRED. REFER TO MECHANICAL.
 2. MAGNETIC STARTER BY ELECTRICAL SUBCONTRACTOR.
 3. MANUAL STARTER BY ELECTRICAL SUBCONTRACTOR.
 4. COORDINATE INSTALLATION OF PATHWAYS TO FIT FOR SUMP PUMP WIRING.

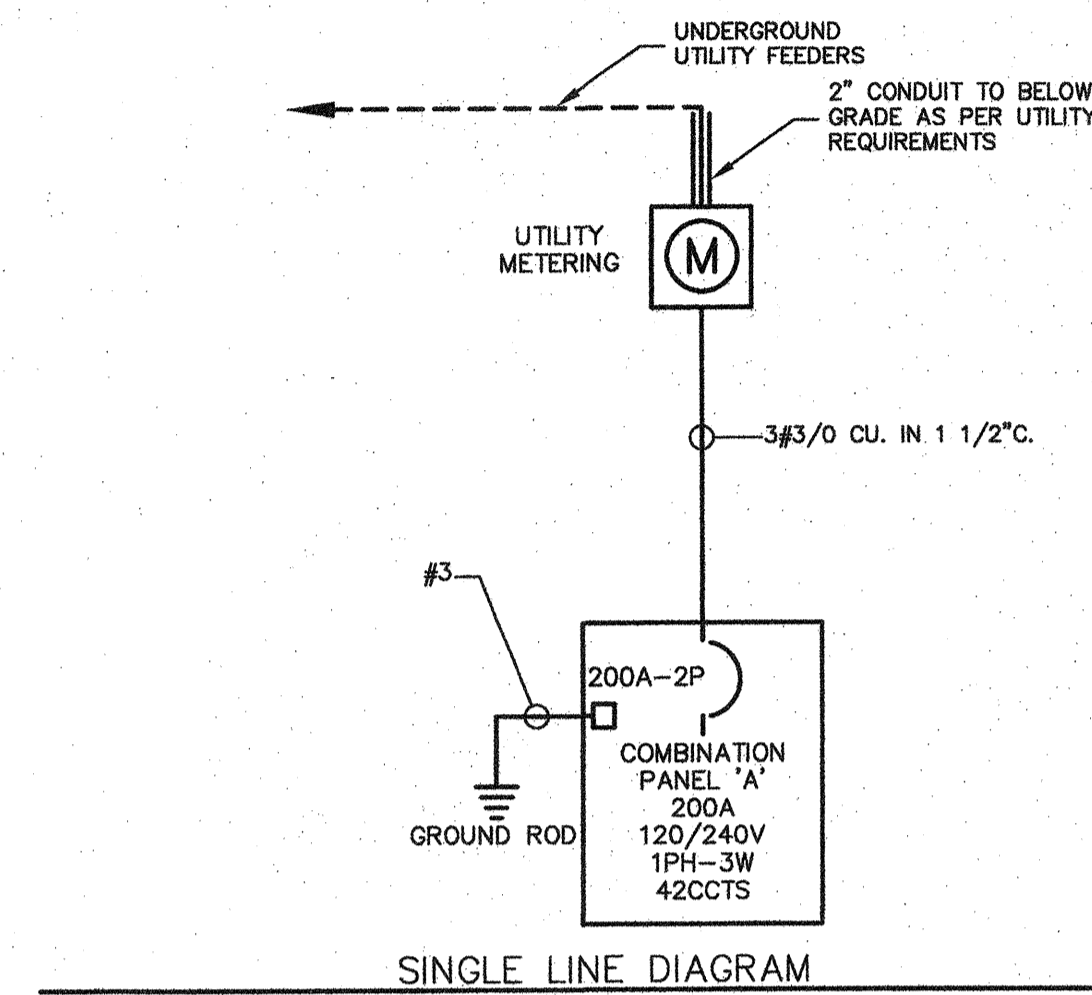
GENERAL NOTES:
 A. MANUAL STARTERS TO BE C/W OVERCURRENT PROTECTION.
 B. ALL DISCONNECT SWITCHES TO BE SUPPLIED BY ELECTRICAL SUBCONTRACTOR.
 C. ELECTRICAL SUBCONTRACTOR TO PROVIDE CIRCUIT BREAKERS AND WIRING ACCORDING TO THE FINAL NAMEPLATES OF ALL THE MECHANICAL EQUIPMENT.
 D. ALL LOW VOLTAGE CONTROL WIRING BY MECHANICAL SUBCONTRACTOR.
 E. ALL LINE VOLTAGE CONTROL WIRING BY ELECTRICAL SUBCONTRACTOR - REFER TO MECHANICAL SECTION. CO-ORDINATE EXACT REQUIREMENTS WITH MECHANICAL SUBCONTRACTOR.

LUMINAIRE SCHEDULE				
TYPE	DESCRIPTION	MOUNTING	CATALOG NUMBER	LAMPS
A	8" LED STRIPLIGHT	SURFACE	LITHONIA TZLIN L96 10000LM FST MVOLT 40K 80CRI	83W LED
B	6" LED DOWNLIGHT	RECESSED	GOHAM EVO VR 35-45 6AR LS 173 MVOLT EZ10 DNA	10W LED

LUMINAIRE SCHEDULE NOTES:
 1. PROVIDE PHOTOCELL CONTROL FOR ALL OUTDOOR LUMINAIRES.



- CONDUCTORS SIZED TO MANUFACTURERS RECOMMENDATIONS. MAXIMUM 5% VOLTAGE DROP.
- WIRE AND CONNECT DC TO ALL COMPONENTS.
- PROVIDE 60 MINUTE CAPACITY UNDER FULL LOAD.
- INTERLOCK WITH NORMAL LIGHTING CIRCUIT TO ACTIVATE EMERGENCY LIGHTING UPON LOSS OF NORMAL LIGHTING IN THE AREA. FOR EACH EMERGENCY LIGHTING HEAD, PROVIDE ZONE SENSING RELAYS AS REQUIRED.



* SIZE CIRCUIT BREAKER AND WIRING ACCORDING TO THE FINAL NAMEPLATE RATING ON THE EQUIPMENT.

PANEL A		MOUNTING SURFACE		LOCATION BUILDING SERVICES 103		VOLTAGE 120/240V-1PH-3W		MAIN BUS 200A		REMARKS C/W 200A-2P MAIN C.B.	
DESCRIPTION	BKR	CIRCUIT	BKR	DESCRIPTION	BKR	CIRCUIT	BKR	DESCRIPTION	BKR	CIRCUIT	BKR
EXTERIOR LIGHTING	15	1	2	HRV-1	15	1	2	HRV-1	15	1	2
LIGHTING	15	3	4	HC-1	15	3	4	HC-1	15	3	4
SPARE	15	5	8	#10 WIRE	15	5	8	#10 WIRE	15	5	8
SPARE	15	7	8	HC-2	15	7	8	HC-2	15	7	8
SPARE	15	9	10	#10 WIRE	15	9	10	#10 WIRE	15	9	10
SPARE	15	11	12	HWT-1	15	11	12	HWT-1	15	11	12
MOTORIZED DAMPER	15	13	14		15	13	14		15	13	14
WP-1	20	15	16	P-1	20	15	16	P-1	20	15	16
		17	18	SPACE		17	18	SPACE		17	18
WS-1	15	19	20	SPACE	15	19	20	SPACE	15	19	20
SPACE		21	22	SPACE		21	22	SPACE		21	22
GF WP RECEPTACLES	15	23	24	BASEBOARD HEATERS	15	23	24	BASEBOARD HEATERS	15	23	24
RECEPTACLES	15	25	26		15	25	26		15	25	26
GF RECEPTACLE	15	27	28	BASEBOARD HEATERS	15	27	28	BASEBOARD HEATERS	15	27	28
SPACE		29	30			29	30			29	30
SPACE		31	32	15 AUTOMATIC FLUSH/SINK SENSORS		31	32	15 AUTOMATIC FLUSH/SINK SENSORS		31	32
SPACE		33	34	SPACE		33	34	SPACE		33	34
SPACE		35	36	15 DOOR OPERATORS		35	36	15 DOOR OPERATORS		35	36
SPACE		37	38	20 HAND DRYER		37	38	20 HAND DRYER		37	38
SPACE		39	40	20 HAND DRYER		39	40	20 HAND DRYER		39	40
SPACE		41	42	15 NIGHTLIGHT/ EMERGENCY LIGHTING		41	42	15 NIGHTLIGHT/ EMERGENCY LIGHTING		41	42



Revisions
 2018-05-17 ISSUED FOR CONSTRUCTION
 Date Revision

Northern Sky Architecture Inc.

100-128 James Avenue
 R3B 1X9
 Winnipeg, Manitoba
 204.943.6767

NOVA 3 ENGINEERING LTD.
 CONSULTING ENGINEERS
 201-120 FORT STREET TEL: (204) 943-6142
 WINNIPEG, MANITOBA R3C 1C7 FAX: (204) 942-1276
 WWW.NOVA3.CA IN: 36232e

THIS DRAWING IS THE EXCLUSIVE PROPERTY OF NOVA 3 ENGINEERING LTD. AND MAY ONLY BE REPRODUCED WITH THE WRITTEN PERMISSION OF NOVA 3 ENGINEERING LTD.
 THE CONCEPT AND DESIGN INCORPORATED INTO THIS DRAWING ARE BASED ON INFORMATION PROVIDED BY THE CLIENT AND OTHER RELATED SOURCES. PROFESSIONAL ENGINEER ACCEPTS NO RESPONSIBILITY FOR DRAWING AND DESIGN UNLESS DRAWING IS ACCOMPANIED BY ORIGINAL SEALED LETTER OF INTENT OR EQUIVALENT ACCEPTABLE FACSIMILE. PROFESSIONAL ENGINEER ACCEPTS NO RESPONSIBILITY FOR FINAL INSTALLATION PERFORMANCE WITHOUT ORIGINAL SEALED CERTIFICATE OF INSPECTION OR EQUIVALENT ACCEPTABLE FACSIMILE.

Stamp

Certificate of Authorization
 Nova 3 Engineering Ltd.
 No. 962 Date: 2018-05-17

Stamp

V. J. THIELMANN
 REGISTERED PROFESSIONAL ENGINEER

Project
New La Barriere Park Washroom Project
 La Barriere Park, Manitoba

drawing title	ELECTRICAL - SCHEDULES AND DISTRIBUTION	
scale	as noted	designed by JB
date	May, 2018	drawn by JB
project no.	16.235	reviewed by VJT
bid opp. no.	436-2018	sheet E.2.0 REV. 0