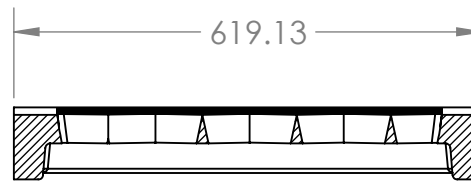
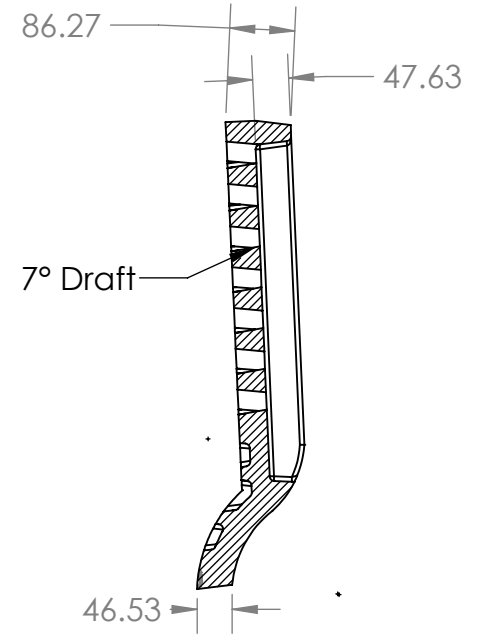
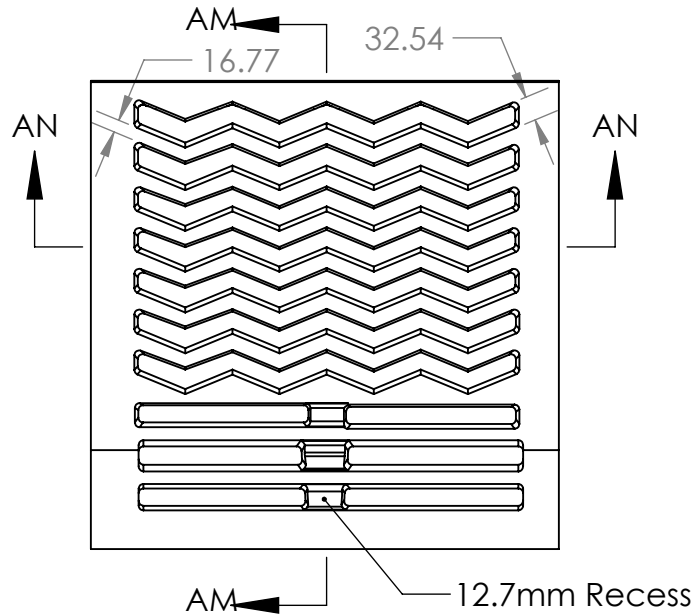
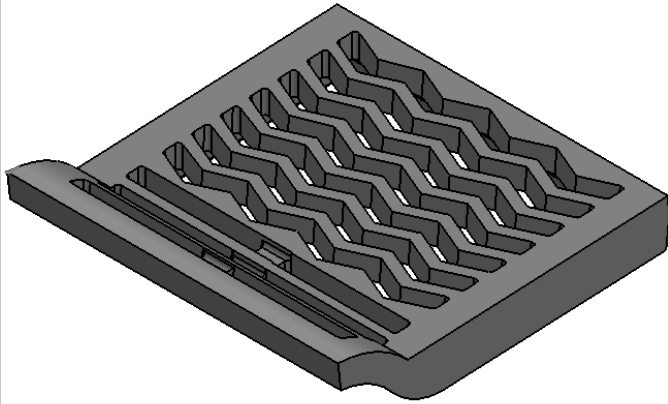


# **APPENDIX 'G'**

## **MOUNTABLE CURB AND GUTTER INLET PAVING GRATE**



# NOTES:

ALL TOLERANCES ARE +/- 1/16" UNLESS OTHERWISE SPECIFIED

ESTIMATED WEIGHT -196 LBS



**D&L FOUNDRY, INC.**  
**"THE IRON MEN"**  
 MADE IN THE USA

THE INFORMATION CONTAINED IN THIS DRAWING IS THE SOLE PROPERTY OF D&L FOUNDRY. ANY REPRODUCTION IN PART OR AS A WHOLE WITHOUT THE WRITTEN PERMISSION OF D&L FOUNDRY IS PROHIBITED.

**D&L PART NUMBER**  
**TF-102**

**DRAWN BY: Mike Kask**

**DATE: 5-6-13**

## REVISIONS

## REFERENCE INFORMATION

GRAY IRON CONFORMS TO  
 ASTM A48 CL35B

## CATALOG NUMBER

COVER  
 COPE: XXXX  
 DRAG: XXXX

COVER  
 COPE: XXXX  
 DRAG: XXXX

DESIGNATES MACHINED SURFACE