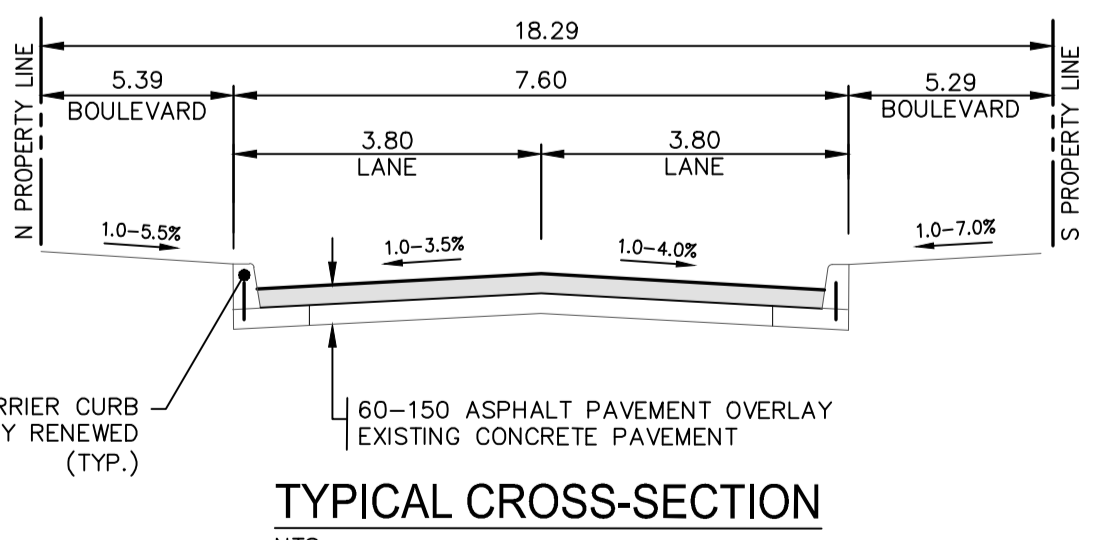


MATCHLINE STA. 5+80, SEE DWG C-08

MATCHLINE STA. 4+20, SEE DWG C-06



TYPICAL CROSS-SECTION

- NOTES:
1. ALL WORK AND MATERIALS TO BE IN ACCORDANCE WITH THE LATEST REVISION OF THE CITY OF WINNIPEG STANDARD CONSTRUCTION SPECIFICATIONS.
 2. CONTRACTOR TO CONFIRM THE LOCATION OF ALL UTILITIES/SERVICES IN THE FIELD PRIOR TO CONSTRUCTION.
 3. ALL ROADWAY DIMENSIONS SHOWN ARE TO BACK OF CURB.
 4. ADD 200.00 TO ABBREVIATED ELEVATIONS TO OBTAIN GEODETIC ELEVATION.
 5. RENEW CURB AND SIDEWALK AS IDENTIFIED BY CONTRACT ADMINISTRATOR.
 6. ALL PRIVATE WALKWAYS TO BE ADJUSTED TO NEW SIDEWALK OR TOP OF CURB ELEVATION, AS REQUIRED.
 7. MODIFIED BARRIER CURB TO BE CONSTRUCTED AT ALL INTERSECTION RADII AND BACK LANE RADII.
 8. ADJUST MH FRAMES, GB RIMS, AND VALVES TO NEW GRADES, AS REQUIRED.
 9. INSTALL 40MM LIP CURB THROUGH RESIDENTIAL APPROACHES AS IDENTIFIED BY CONTRACT ADMINISTRATOR.
 10. CONTRACTORS TO TAKE PRECAUTIONARY STEPS TO PROTECT EXISTING TREES WITHIN THE LIMITS OF CONSTRUCTION FROM DAMAGE FROM CONSTRUCTION ACTIVITIES AS OUTLINED IN THE SPECIFICATIONS.
 11. LAMP STANDARDS, HYDRO POLES, AND ANCHORS THAT REQUIRE TEMPORARY SUPPORT, REMOVAL OR REPLACEMENT, TO BE DONE SO AT THE EXPENSE OF THE CONTRACTOR AS NECESSARY.
 12. ALL BOULEVARDS TO BE SODDED UNLESS OTHERWISE NOTED.
 13. CONTRACTOR TO CONFIRM LOCATION AND LIMITS OF SEWER REPAIRS BY PERFORMING VIDEO INSPECTION AND REVIEWING WITH CONTRACT ADMINISTRATOR PRIOR TO CONSTRUCTION (IF REQ'D).
 14. ADJUST ALL WATER VALVES, HYDRANTS, MANHOLES, AND CATCH BASINS IN WORK AREA TO GRADE.
 15. INSTALL GLASS GRID AS IDENTIFIED BY CONTRACT ADMINISTRATOR.

PRELIMINARY
NOT FOR CONSTRUCTION

METRIC
WHOLE NUMBERS INDICATE MILLIMETRES
DECIMALIZED NUMBERS INDICATE METRES



EXISTING	PROPOSED	EXISTING	PROPOSED	LEGEND-PLAN	LEGEND-PROFILE
---	---	---	---	WATER MAIN	IRON BAR
---	---	---	---	LAND DRAINAGE SEWER	HYDRO POLE & LIGHT STANDARD
---	---	---	---	WASTE WATER SEWER	LIGHT STANDARD OR TRAFFIC SIGNAL
---	---	---	---	HYDRO	HYDRO POLE
---	---	---	---	M.T.S.	CURB RAMP
---	---	---	---	GAS	DETECTABLE WARNING SURFACE TILE
---	---	---	---	SIGNALS	EDGE OF SIDEWALK
○	○	○	○	MANHOLE	FENCE
□	□	□	□	CATCH BASIN	PROPERTY LINE
△	△	△	△	CURB INLET	EDGE OF ASPHALT
△	△	△	△	UTILITIES ADJUSTED	EDGE OF CONCRETE
∩	∩	∩	∩	PLUG	MODIFIED BARRIER CURB
◇	◇	◇	◇	HYDRANT	BARRIER CURB
⊗	⊗	⊗	⊗	VALVE	CONC SIDEWALK
⊙	⊙	⊙	⊙	CURB STOP	CONCRETE SLAB
---	---	---	---	GROUND GRADE	ASPHALT
(31.00)	(31.00)	(31.00)	(31.00)	PAVEMENT GRADE	ASPHALT JOINT REPAIR
---	---	---	---	ANCHOR	MILLED SURFACE
#111	#111	#111	#111	CIVIC ADDRESS	GLASS GRID
---	---	---	---	EXISTING LEGEND-PLAN	PROPOSED LEGEND-PLAN
---	---	---	---	EXISTING LEGEND-PROFILE	PROPOSED LEGEND-PROFILE

LOCATIONS APPROVED UNDERGROUND STRUCTURES

SIGNED BY: _____ DATE: _____

SUPV U/G STRUCTURES

LOCATION OF UNDERGROUND STRUCTURES AS SHOWN ARE BASED ON THE BEST INFORMATION AVAILABLE BUT NO GUARANTEE IS GIVEN THAT ALL EXISTING UTILITIES ARE SHOWN OR THAT THE GIVEN LOCATIONS ARE EXACT CONFIRMATION OF EXISTANCE AND EXACT LOCATION OF ALL SERVICES MUST BE OBTAINED FROM THE INDIVIDUAL UTILITIES BEFORE PROCEEDING

G.A.M. - BENCHMARK LOCATION TOP OF TOP NUT ON HYDRANT EAST OF KNIGHTSBRIDGE DRIVE ELEV. 232.977

WSP Canada Inc
Suite 111 - 93 Lombard Ave
Winnipeg, MB R3B 3B1
t 204.943.3178
f 204.943.4948
www.wsp.com

DESIGNED BY: MCW CHECKED BY: VM/SM

DRAWN BY: HK APPROVED BY: VM

WORK SCALE: 1:250
VERTICAL SCALE: 1:10

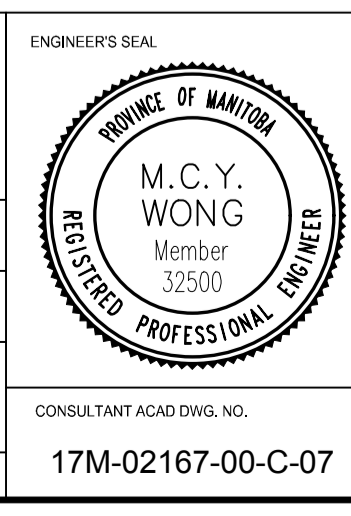
NO. REVISIONS DATE BY

DATE 2017-11-20

wsp

PROFESSIONAL ENGINEER

CONSULTANT ACAD DWG. NO. 17M-02167-00-C-07



THE CITY OF WINNIPEG
PUBLIC WORKS DEPARTMENT
ENGINEERING SERVICES DIVISION

2018 LOCAL STREET RENEWAL PROGRAM

KNIGHTSBRIDGE DRIVE
MEADOWWOOD DRIVE TO KNIGHTSBRIDGE DRIVE

PAVEMENT REHABILITATION
STA. 4+20 TO STA. 5+80

CITY DRAWING NUMBER: ---
SHEET 07 OF 20
BID NO. 32-2018