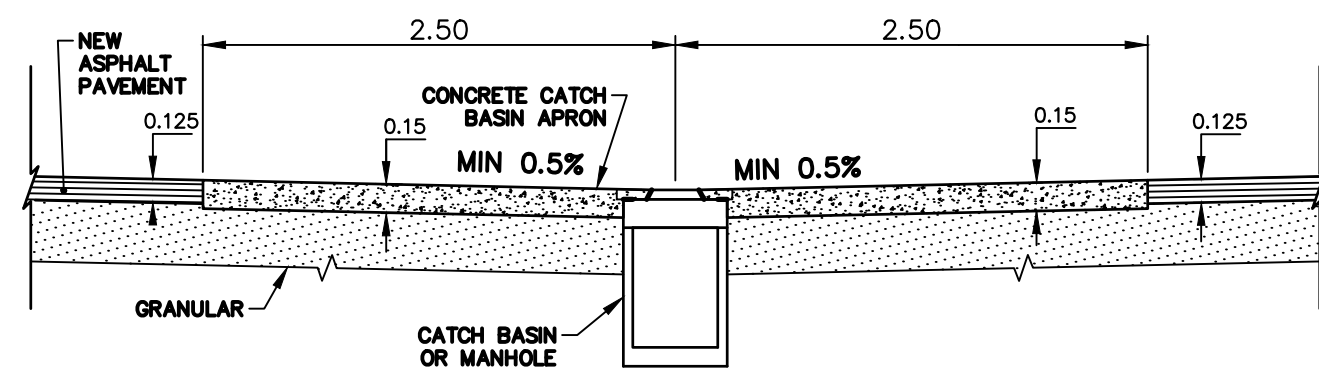


LANE PAVEMENT PROFILE  
SCALE: 1:250 HOR  
1:10 VER

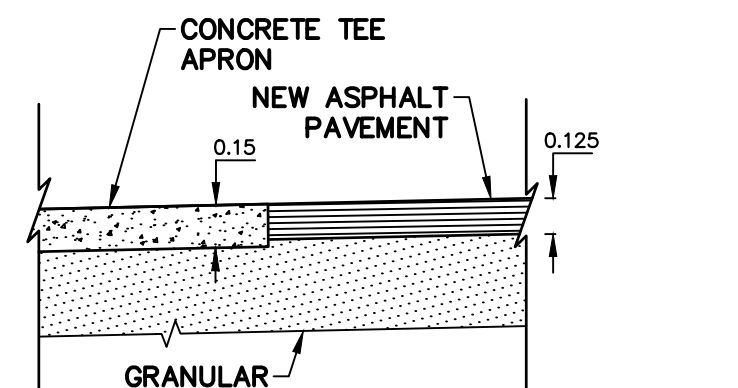
NOTE: CHAINAGES SHOWN ARE ALONG  
CL OF RIGHT-OF-WAY

NOTES:

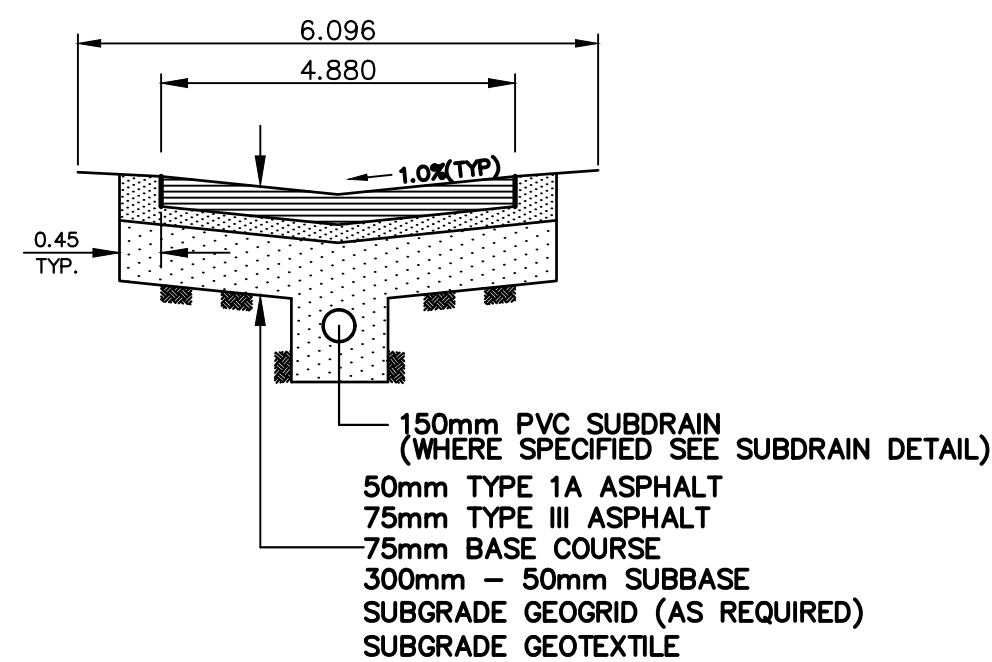
1. ALL WORK AND MATERIALS TO BE IN ACCORDANCE WITH THE LATEST REVISION OF THE CITY OF WINNIPEG STANDARD CONSTRUCTION SPECIFICATION.
2. THE CONTRACTOR IS TO CONFIRM THE LOCATION OF ALL UTILITIES/SERVICES IN THE FIELD PRIOR TO CONSTRUCTION.
3. ISOLATE EXISTING HYDRO POLES AND ANCHORS AS PER SD-228C, AS DIRECTED BY CONTRACT ADMINISTRATOR.
4. ALL EXISTING APPROACHES TO BE RENEWED AS DIRECTED BY CONTRACT ADMINISTRATOR.
5. ADDITIONAL EXCAVATION AND INSTALLATION OF SUBGRADE GEOGRID TO BE DETERMINED BY CONTRACT ADMINISTRATOR.
6. ADJUSTMENTS TO PROPOSED CROSSFALL, WHERE REQUIRED, ARE TO BE DETERMINED BY CONTRACT ADMINISTRATOR TO SUIT EXISTING DRIVEWAYS, APPROACHES, ETC..
7. ALL LAND DRAINAGE SEWER EXCAVATIONS TO BE JETTED, FLOODED AND TAMPED AS PER CW2030-R7
8. TREE/BUSH REMOVALS AS DIRECTED BY CONTRACT ADMINISTRATOR.
9. ALL BOULEVARD RESTORATIONS TO BE SODDED UNLESS OTHERWISE NOTED.
10. RENEW CURB AND SIDEWALK AS DIRECTED BY THE CONTRACT ADMINISTRATOR.



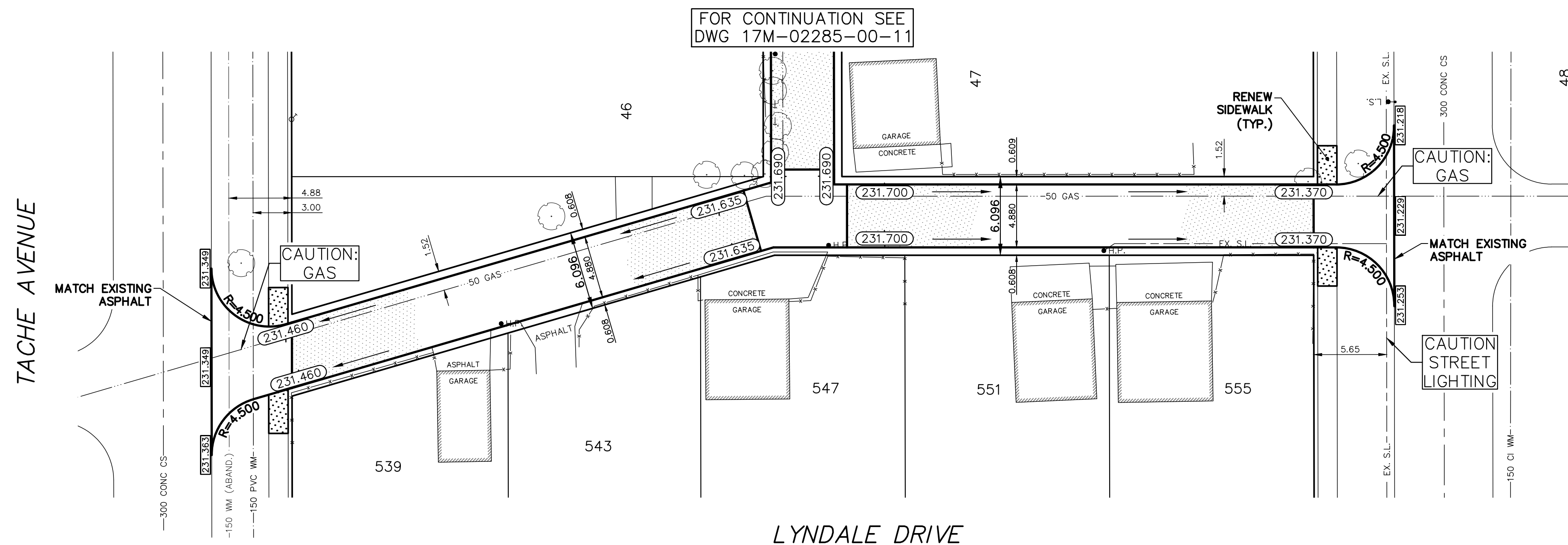
TYPICAL CATCHBASIN APRON DETAIL  
SCALE: N.T.S.



TYPICAL TEE APRON TIE-IN DETAIL  
SCALE: N.T.S.



TYPICAL ALLEY CROSS SECTION WITH SUBDRAIN  
SCALE: N.T.S.



CRAWFORD AVENUE

METRIC  
WHOLE NUMBERS INDICATE MILLIMETRES  
DECIMALIZED NUMBERS INDICATE METRES



EXISTING	LEGEND - PLAN	PROPOSED	EXISTING	LEGEND - PLAN	PROPOSED	EXISTING	LEGEND - PROFILE	PROPOSED
	WATERMAIN			GAS			WATERMAIN	
	HYDRANT			M.T.S.			VALVE	
	VALVE			TRAFFIC SIGNALS			LAND DRAINAGE SEWER	
	CURB STOP			CONCRETE/ASPHALT			WASTE WATER SEWER	
	LAND DRAINAGE SEWER			SIDEWALK			CENTERLINE	
	WASTE WATER SEWER			CURB RAMP			SOUTH & EAST GUTTER	
	CB LEAD			ELEVATIONS			NORTH & WEST GUTTER	
	MANHOLE			PROPERTY LINE			S & E GARAGE PAD	
	CATCH BASIN			SURVEY BAR			N & W GARAGE PAD	
	CURB INLET							
	HYDRO							

LOCATION APPROVED  
UNDERGROUND STRUCTURES

SUPV. U/G STRUCTURES COMMITTEE DATE

NOTE:

LOCATION OF UNDERGROUND STRUCTURES AS SHOWN ARE BASED ON THE BEST INFORMATION AVAILABLE BUT NO GUARANTEE IS GIVEN THAT ALL EXISTING UTILITIES ARE SHOWN OR THAT THE GIVEN LOCATIONS ARE EXACT. CONFIRMATION OF EXISTENCE AND EXACT LOCATION OF ALL SERVICES MUST BE OBTAINED FROM THE INDIVIDUAL UTILITIES BEFORE PROCEEDING WITH CONSTRUCTION.

R.M. ELEV.

NO

REVISIONS

DATE

BY



111-83 Lombard Avenue  
Winnipeg, Manitoba  
R3B 3B1 Canada  
Phone: 204-943-3178  
Fax: 204-943-4948  
wsp.com

DESIGNED BY A.B.

DRAWN BY A.B.

HOR. SCALE: 1:250

VERT. SCALE: AS LABELED

CHECKED BY R.H.

APPROVED BY S.M.

RELEASED FOR CONSTRUCTION

---

NOT FOR CONSTRUCTION

CONSULTANT DRAWING NO.

17M-02285-00 -12



THE CITY OF WINNIPEG  
PUBLIC WORKS DEPARTMENT  
FINANCE NO.

2018 LOCAL IMPROVEMENTS  
LYNDALE DR LANE  
FROM TACHE AVE TO CRAWFORD AVE

ASPHALT PAVEMENT

CITY DRAWING NO.

SHEET 2 OF 2

BID OPPORTUNITY

30-2018

ENGINEERS  
GEOSCIENTISTS  
MANITOBA  
Certificate of Authorization  
WSP Canada Group Limited  
No. 6657

PLOT DATE: March 15, 2018

BID OPPORTUNITY: 30-2018  
CONTRACT NUMBER: ----

FILE PATH: P:\2017\17M-02285-00 - Local Improvements Package 18-U-01\08 WSP Drawings  
FILE NAME: Tache\_Crawford Lane.dwg