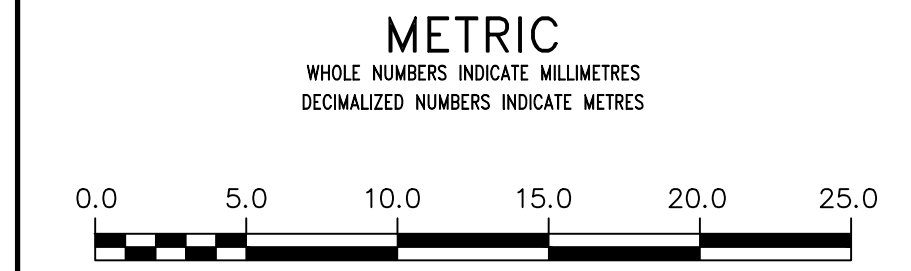
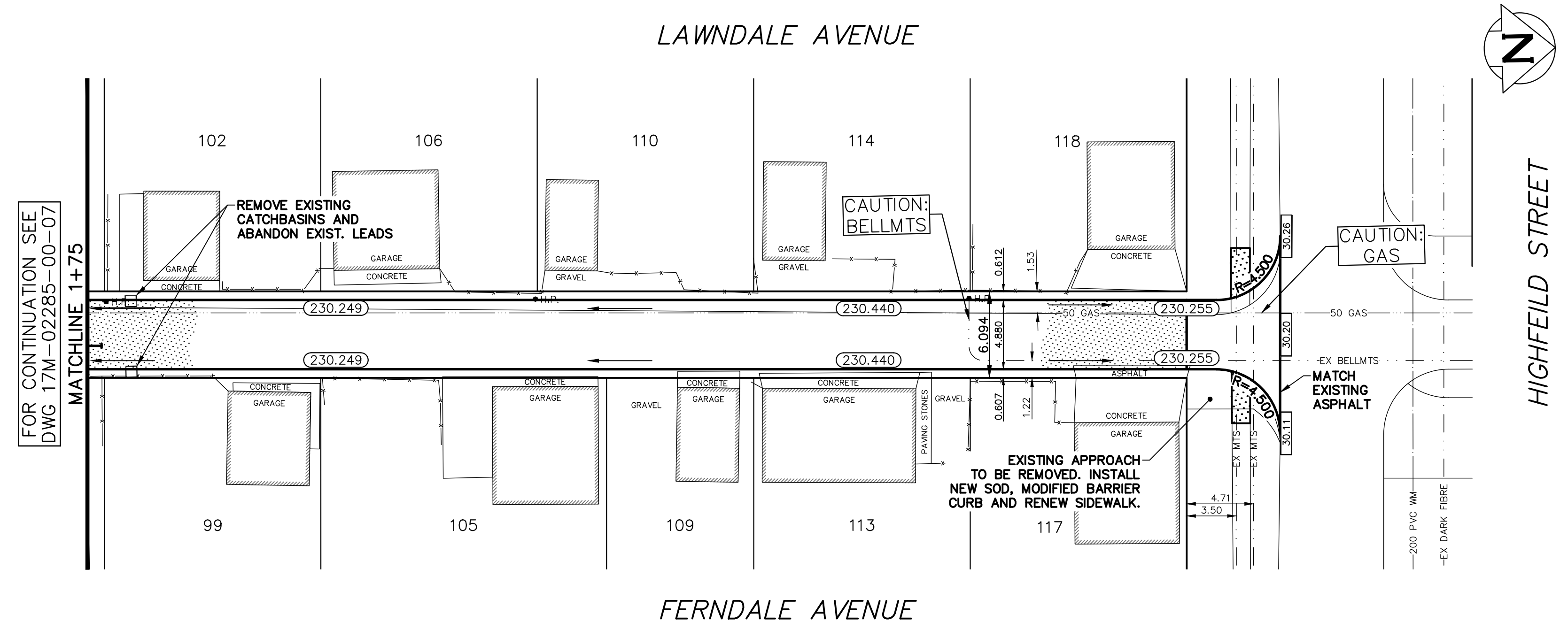
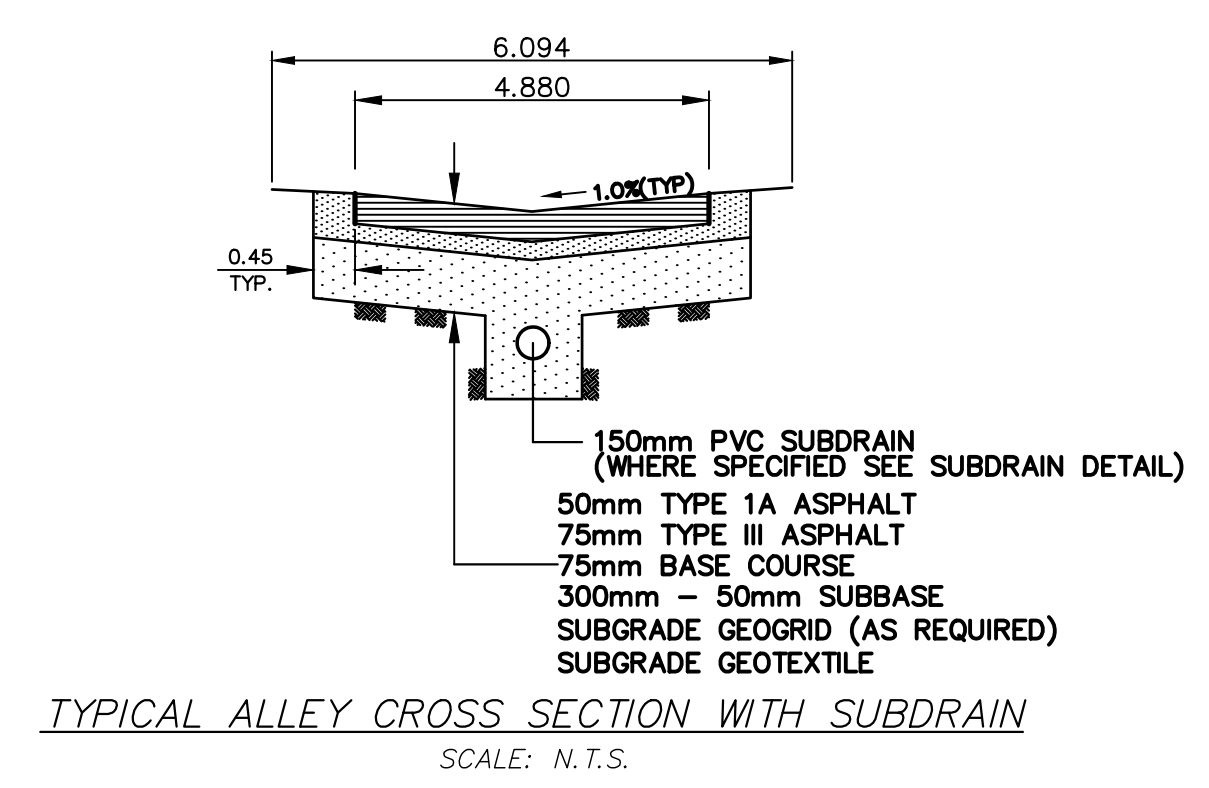
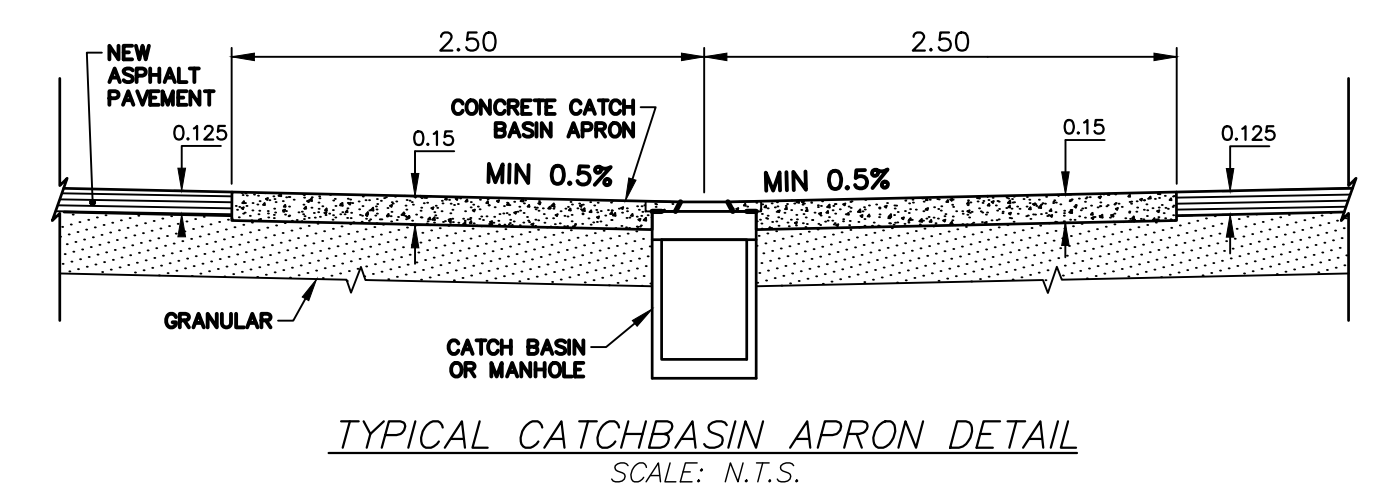
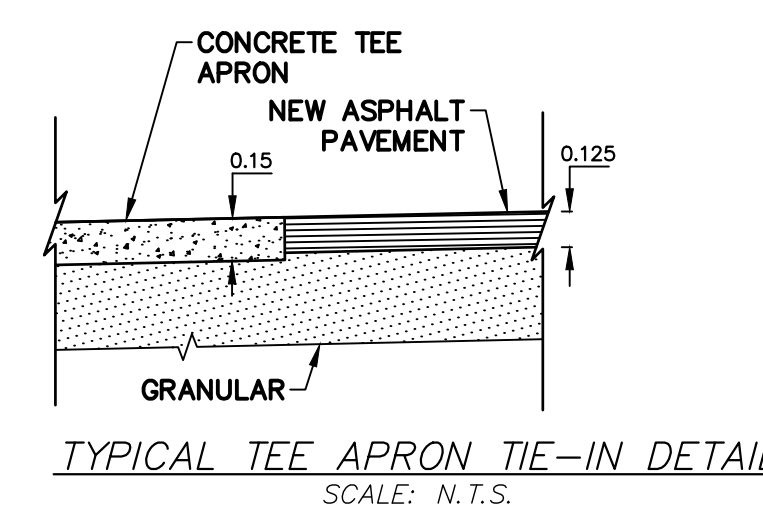


- NOTES:
1. ALL WORK AND MATERIALS TO BE IN ACCORDANCE WITH THE LATEST REVISION OF THE CITY OF WINNIPEG STANDARD CONSTRUCTION SPECIFICATION.
  2. THE CONTRACTOR IS TO CONFIRM THE LOCATION OF ALL UTILITIES/SERVICES IN THE FIELD PRIOR TO CONSTRUCTION.
  3. ISOLATE EXISTING HYDRO POLES AND ANCHORS AS PER SD-228C, AS DIRECTED BY CONTRACT ADMINISTRATOR.
  4. ALL EXISTING APPROACHES TO BE RENEWED AS DIRECTED BY CONTRACT ADMINISTRATOR.
  5. ADDITIONAL EXCAVATION AND INSTALLATION OF SUBGRADE GEOGRID TO BE DETERMINED BY CONTRACT ADMINISTRATOR.
  6. ADJUSTMENTS TO PROPOSED CROSSFALL, WHERE REQUIRED, ARE TO BE DETERMINED BY CONTRACT ADMINISTRATOR TO SUIT EXISTING DRIVEWAYS, APPROACHES, ETC..
  7. ALL LAND DRAINAGE SEWER EXCAVATIONS TO BE JETTED, FLOODED AND TAMPED AS PER CW2030-R7
  8. TREE/BUSH REMOVALS AS DIRECTED BY CONTRACT ADMINISTRATOR.
  9. ALL BOULEVARD RESTORATIONS TO BE SODDED UNLESS OTHERWISE NOTED.
  10. RENEW CURB AND SIDEWALK AS DIRECTED BY THE CONTRACT ADMINISTRATOR.

**LANE PAVEMENT PROFILE**  
SCALE: 1:250 HOR  
1:10 VER


NOTE: CHAINAGES SHOWN ARE ALONG CL OF RIGHT-OF-WAY



	WATERMAIN		GAS		150 MM		WATERMAIN VALVE		150 MM
	HYDRANT		M.T.S.		300 LBS		LAND DRAINAGE SEWER		300 LBS
	VALVE		CONCRETE/ASPHALT		250 WWS		WASTE WATER SEWER		250 WWS
	CURB STOP		SIDEWALK		CENTERLINE		SOUTH & EAST GUTTER		NORTH & WEST GUTTER
	LAND DRAINAGE SEWER		CURB RAMP		S & E GARAGE PAD		N & W GARAGE PAD		SURVEY BAR
	WASTE WATER SEWER		ELEVATIONS		PROPERTY LINE		SURVEY BAR		SURVEY BAR
	CB LEAD		MANHOLE		CATCH BASIN		CURB INLET		HYDRO
	EXISTING		PROPOSED		EXISTING		PROPOSED		EXISTING

LOCATION APPROVED UNDERGROUND STRUCTURES	SUPV.	U/G	STRUCTURES	DATE
NOTE:	LOCATION OF UNDERGROUND STRUCTURES AS SHOWN ARE BASED ON THE BEST INFORMATION AVAILABLE BUT NO GUARANTEE IS GIVEN THAT ALL EXISTING UTILITIES ARE SHOWN OR THAT THE GIVEN LOCATIONS ARE EXACT. CONFIRMATION OF EXISTENCE AND EXACT LOCATION OF ALL SERVICES MUST BE OBTAINED FROM THE INDIVIDUAL UTILITIES BEFORE PROCEEDING WITH CONSTRUCTION.			

B.M. ELEV.				
4	ISSUED FOR TENDER	18/03/19	R.H.	
3	REVISED TO COW COMMENTS	18/03/09	A.B.	
2	UGS REVIEW	18/02/14	A.B.	
1	PRELIMINARY DESIGN REVIEW	18/01/15	A.B.	
NO	REVISIONS	DATE	BY	

		111-83 Lombard Avenue Winnipeg, Manitoba R3B 3B1 Canada Phone: 204-943-3178 Fax: 204-943-4948 wsp.com	
DESIGNED BY	A.B.	CHECKED BY	R.H.
DRAWN BY	A.B.	APPROVED BY	S.M.
HOR. SCALE:	1:250	RELEASED FOR CONSTRUCTION	
VERT. SCALE:	AS SHOWN	— —	
JANUARY 2018		— —	

NOT FOR CONSTRUCTION

**THE CITY OF WINNIPEG**  
PUBLIC WORKS DEPARTMENT

2018 LOCAL IMPROVEMENTS  
LAWNDALE AVE / FERNDAL AVE LANE  
FROM MATCHLINE AT 1+75 TO  
HIGHFIELD ST  
ASPHALT PAVEMENT

CITY DRAWING NO.  
SHEET 2 OF 2  
BID OPPORTUNITY  
30-2018

**ENGINEERS  
GEOSCIENTISTS  
MANITOBA**  
Certificate of Authorization  
WSP Canada Group Limited  
No. 6657