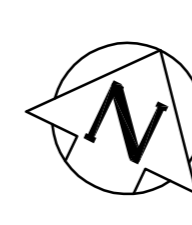
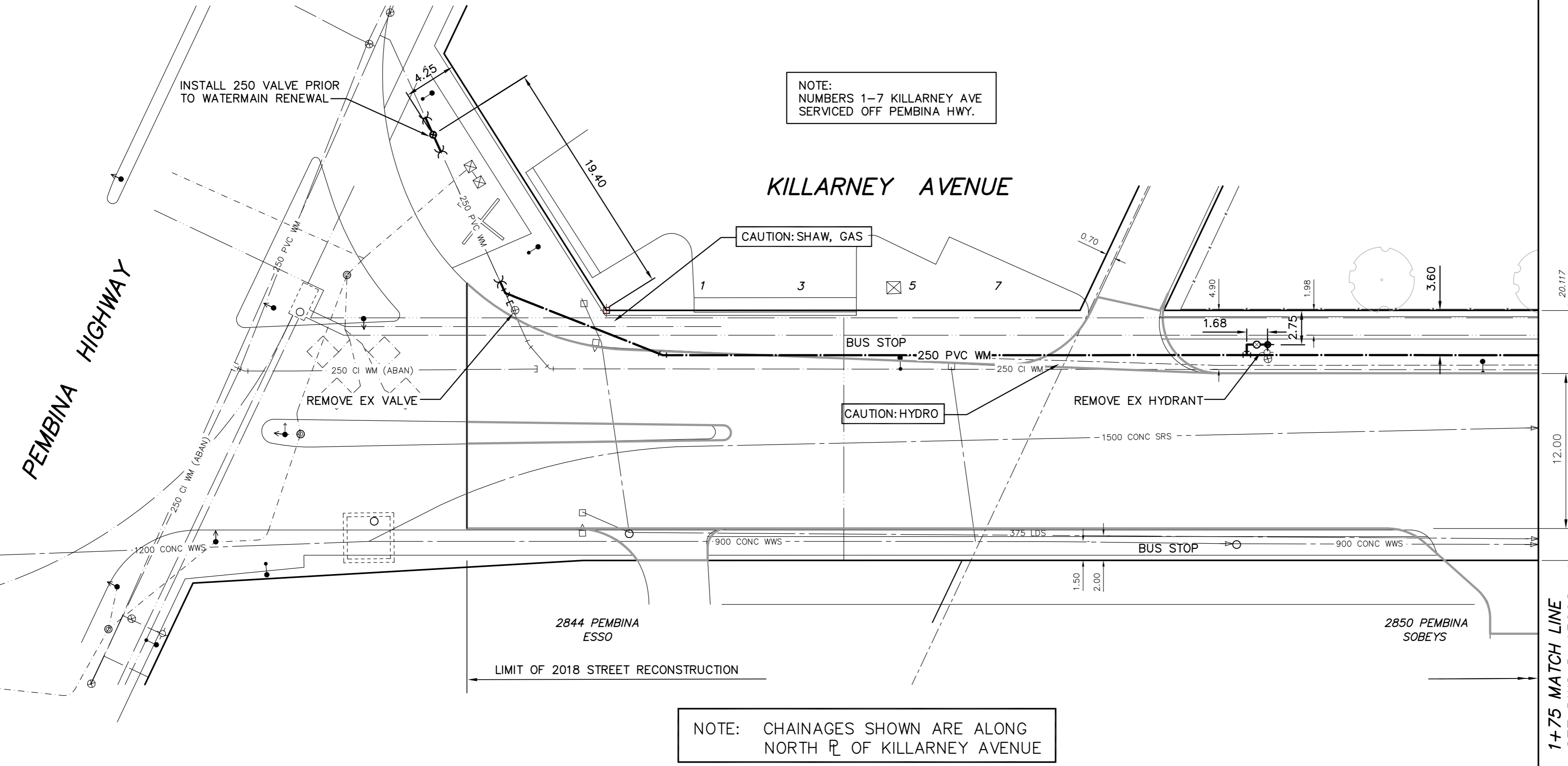
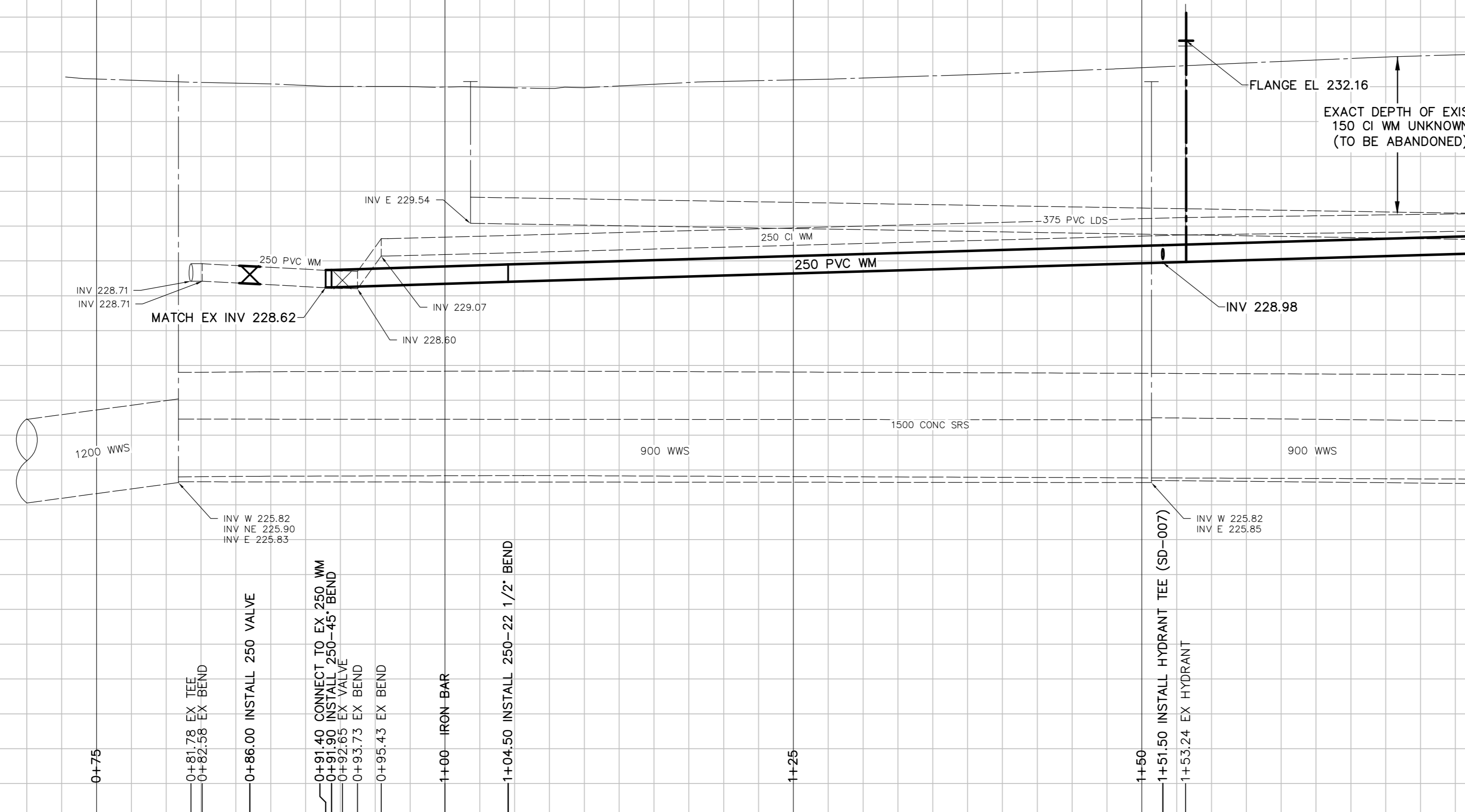


232.0  
231.0  
230.0  
229.0  
228.0  
227.0  
226.0  
225.0

232.0  
231.0  
230.0  
229.0  
228.0  
227.0  
226.0  
225.0

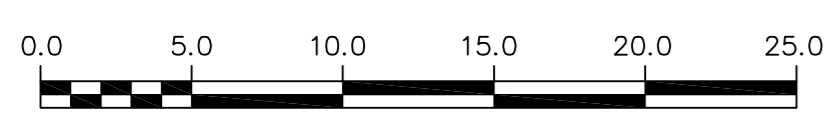


**WATER SERVICE INFORMATION**

ADDRESS	SIZE (mm) MATERIAL (STREET)	SIZE (mm) MATERIAL (PROP.)	SHORT & LONG MEASUREMENT	CORP. LOCATION	REMARKS
1-7 KILLARNEY AVE COMMERCIAL	UNKNOWN	25 COPPER	10.45 N SBL	UNKNOWN	SERVICED FROM PEMBINA
2844 PEMBINA HWY COMMERCIAL	50 COPPER	50 COPPER	58.5 B/NL KILLARNEY 0.3 N OF CORP	UNKNOWN	SERVICED FROM PEMBINA

SEE TRAFFIC STAGING PLAN ON DRAWING D-15102

NOTE: ALL VALVES TO BE INSTALLED COUNTERCLOCKWISE TO CLOSE



**METRIC**  
WHOLE NUMBERS INDICATE MILLIMETRES  
DECIMALIZED NUMBERS INDICATE METRES



**WARNING**  
IF POWER EQUIPMENT OR EXPLOSIVES ARE TO BE USED FOR EXCAVATION ON THIS PROJECT THE CONTRACTOR MUST:  
1) NOTIFY THE GAS COMPANY OF THE PROPOSED LOCATION OF EXCAVATION.  
2) TAKE PRECAUTION TO AVOID DAMAGE TO GAS COMPANY INSTALLATIONS.  
SEE PROVINCIAL REGULATION 210/72 FOR DETAILS

**LOCATION APPROVED UNDERGROUND STRUCTURES**  
SUPV. U/G STRUCTURES COMMITTEE DATE  
NOTE:  
LOCATION OF UNDERGROUND STRUCTURES AS SHOWN ARE BASED ON THE BEST INFORMATION AVAILABLE BUT NO GUARANTEE IS GIVEN THAT ALL EXISTING UTILITIES ARE SHOWN OR THAT THE GIVEN LOCATIONS ARE EXACT. CONFIRMATION OF EXISTENCE AND EXACT LOCATION OF ALL UTILITIES MUST BE OBTAINED FROM THE INDIVIDUAL UTILITIES BEFORE PROCEEDING WITH CONSTRUCTION.

B.M. ELEV. CONSTRUCTION COMPLETION DATE: YYYY MM DD

NO.	ISSUED FOR TENDER	DATE	BY
0	ISSUED FOR TENDER	18/04/17	KJM

**TETRA TECH**

DESIGNED BY: MAL	CHECKED BY: TRC
DRAWN BY: GMD	APPROVED BY: KJM
SCALE: HORIZONTAL 1:250, VERTICAL 1:50	RELEASED FOR CONSTRUCTION: KAS ZUREK
DATE: 2018 04 16	DATE: 18/04/16

PLOT DATE: 2018 04 16

ENGINEER'S SEAL  
ORIGINAL DRAWING REVISION "0" SEALED BY  
K.J. McRAE  
18/04/16  
CONSULTANT DRAWING NUMBER  
1800120500-DWG-C0006

**THE CITY OF WINNIPEG**  
WATER AND WASTE DEPARTMENT  
ENGINEERING DIVISION  
2018 WATERMAIN RENEWALS  
CONTRACT 8  
KILLARNEY AVENUE  
PEMBINA HIGHWAY TO  
75m EAST OF PEMBINA HIGHWAY  
SHEET 6 OF 17  
CITY DRAWING NUMBER  
D-15091