

- CONSTRUCTION NOTES**
- CONSTRUCT NEW 100mm CONCRETE SIDEWALK (SD-228A)
 -
 -
 -
 -
 -
 -
 -
 -
 -
 -
 -
 -
 -
 -
 -
 -
 -
 -
 -
- GENERAL NOTES**
- ADD 200.000m TO ALL DESIGN ELEVATION TO OBTAIN GEODETIC ELEVATIONS
 - CURB REPLACEMENT AS DIRECTED BY CONTRACT ADMINISTRATOR
 - ALL CURB RADII UNDER 15.0m SHALL BE MODIFIED BARRIER
 -
 -
 -
 -
 -

PRELIMINARY
NOT TO BE USED FOR
CONSTRUCTION

METRIC
WHOLE NUMBERS INDICATE MILLIMETERS
DECIMALIZED NUMBERS INDICATE METERS

BID OPPORTUNITY NO. 197-2018

| | | | | | | | | |
|-----|---------------------|-----|-----|---------------------|----------|----------|------------------|----------|
| ⊕ | HYDRANT | ◆ | --- | LDS/WWS | --- | --- | CONCRETE | --- |
| ⊗ | VALVE | ● | --- | WATERMAIN | --- | --- | SIDEWALK RENEWAL | --- |
| ⊙ | CURB STOP | ● | --- | GAS | --- | --- | ASPHALT | --- |
| ○ | MANHOLE | ● | --- | TRAFFIC SIGNALS | --- | --- | | --- |
| □ | CATCH BASIN | ● | --- | HYDRO/STREET LIGHT | --- | EXISTING | LEGEND - PLAN | PROPOSED |
| △ | CURB INLET | ▲ | --- | UNDERGROUND UTILITY | --- | --- | | --- |
| ○ | HYDRO POLE | ● | --- | CURB RENEWAL | --- | --- | NORTH GUTTER | --- |
| ○ | LIGHT STANDARD | ● | --- | PROPERTY LINE | --- | --- | CENTER LINE | --- |
| ○ | TRAFFIC SIGNAL POLE | ● | --- | RAMP CURB | --- | --- | SOUTH GUTTER | --- |
| ⊕ | SURVEY BAR | ◆ | --- | ELEVATIONS | (31.000) | --- | NORTH SIDEWALK | --- |
| ⊕ | GEODETIC BENCH MARK | ◆ | --- | TREE | --- | --- | SOUTH SIDEWALK | --- |
| --- | EXISTING | --- | --- | LEGEND - PLAN | --- | --- | LEGEND - PROFILE | --- |
| --- | LEGEND - PLAN | --- | --- | PROPOSED | --- | --- | PROPOSED | --- |

LOCATION APPROVED
UNDERGROUND STRUCTURES

NO. REVISIONS DATE BY

DATE 2018-04-18

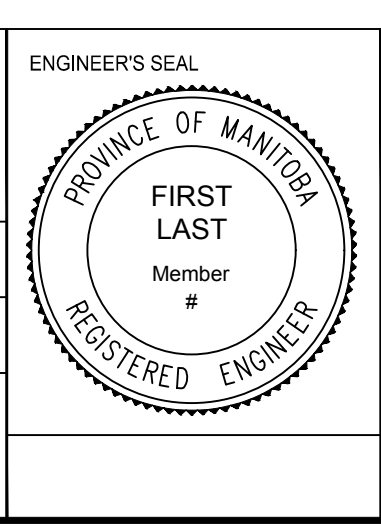
ENGINEERING DIVISION
TECHNOLOGY SERVICES BRANCH
106 - 1155 PACIFIC AVE

DESIGNED BY K.B. CHECKED BY C.H.

DRAWN BY K.B.

HOR. SCALE: 1 : 250
VERTICAL: 1 : 10

DATE 2018-04-18



THE CITY OF WINNIPEG
PUBLIC WORKS DEPARTMENT

DARTMOUTH DRIVE / PEMBINA HIGHWAY
FROM 100m SOUTH DARTMOUTH DRIVE TO 150m WEST SNOW STREET

INSTALL NEW WALK AND GEOMETRIC IMPROVEMENTS
AND ASSOCIATED WORKS

CITY DRAWING NUMBER SE-18-51
SHEET 8 OF 11

3