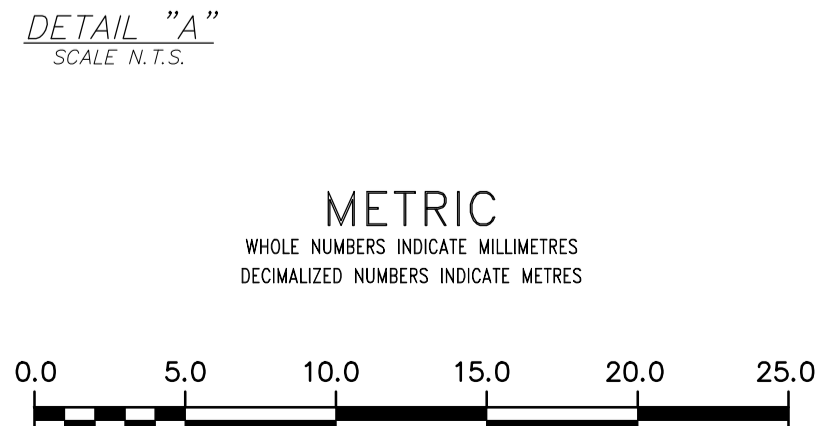
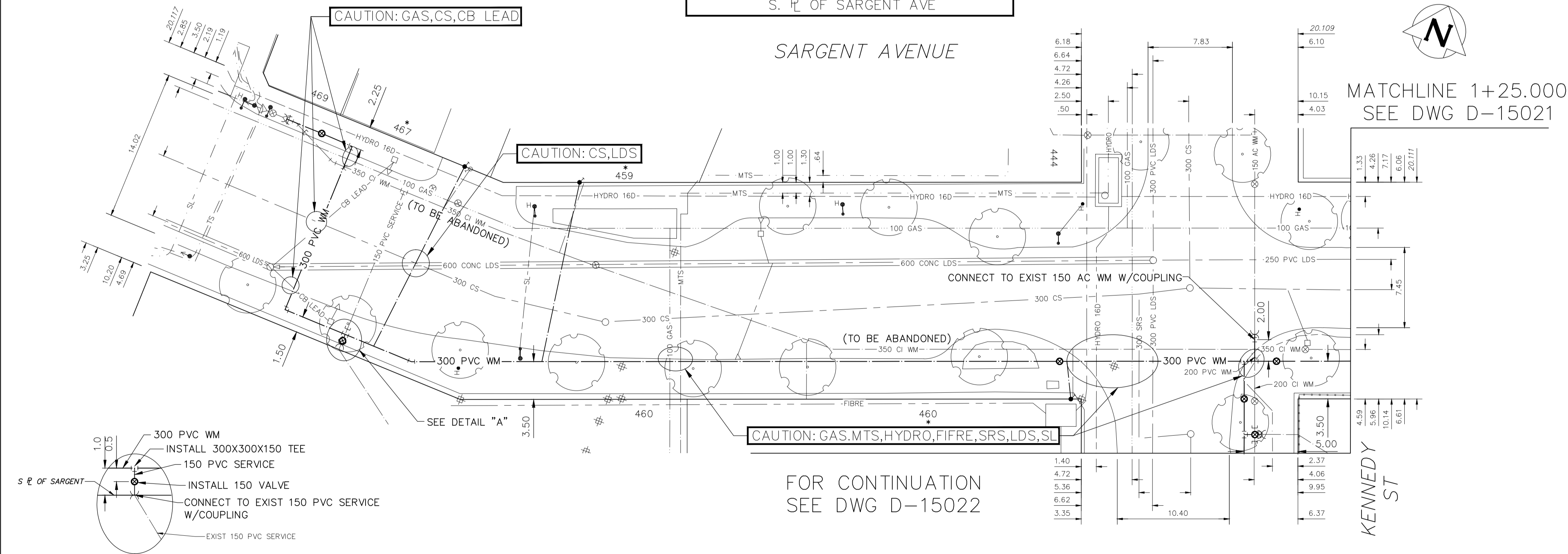


NOTE: CHAINAGES SHOWN ARE ALONG S. R. OF SARGENT AVE

WATER SERVICE INFORMATION					
ADDRESS	SIZE (mm) MATERIAL (STREET)	SIZE (mm) MATERIAL (PROP.)	SHORT & LONG MEASUREMENT	CORP. LOCATION	REMARKS
388 KENNEDY ST	150 PVC	150	11.31 SNL BLDG	20,830>NNL QUAPPELLE AVE	OPP OF VALVE RECONNECT SERVICE
392 KENNEDY ST	20 CU	12	3.51 SNL HSE	42,675>NNL QUAPPELLE AVE	OPP OF S/C RECONNECT SERVICE
393 KENNEDY ST	150 PVC	150	19.10 NSE BLDG WALL	19,052>NNL QUAPPELLE AVE	OPP OF VALVE RECONNECT SERVICE
393 KENNEDY ST	150 PVC	150	17.41 NSL BLDG WALL	17,407>NNL QUAPPELLE AVE	OPP OF VALVE RECONNECT SERVICE
394 KENNEDY ST	12 CU	20	4.09 NSL HSE	50,765>NNL QUAPPELLE AVE	OPP OF S/C RENEW TO R W/20 CU WYED W/396
396 KENNEDY ST	12 CU	12	3.66 NSL HSE	50,762>NNL QUAPPELLE AVE	6.9 W OF S/C RENEW TO R W/20 CU WYED W/394
400 KENNEDY ST	150 PVC	150	4.15 NSL BLDG	71,483>SSL SARGENT AVE	OPP OF VALVE RECONNECT SERVICE
401 KENNEDY ST	150 PVC	150	2.15 NSL BLDG	73,713>SSL SARGENT AVE	OPP OF VALVE RECONNECT SERVICE
421 KENNEDY ST	150 AC	150	3.30 SNL BLDG	3,289>SSL SARGENT AVE	OPP OF VALVE RECONNECT SERVICE
444 KENNEDY ST	150 PVC	150	1.27>NNL BLDG	4,340>NNL SARGENT AVE	OPP OF VALVE RECONNECT SERVICE
459 SARGENT AVE	25 CU	25	4.43 EWL BLDG	34,508>EEL BALMORAL ST	OPP OF VALVE RENEW TO R W/25 CU
460 SARGENT AVE	150 PVC	150	14.82 EWL BLDG	19,012>EEL BALMORAL ST	OPP OF VALVE RECONNECT SERVICE
460 SARGENT AVE	20 CU	20	0.95 EEL BLDG	0,790>NNL KENNEDY ST	OPP OF S/C RENEW TO R W/20 CU
467 SARGENT AVE	12 CU	12	3.72 WEL BLDG	23,016>EEL BALMORAL ST	0.9 W OF S/C RENEW TO R W/20 CU
469 SARGENT AVE	50 CU	50	19.50 NSL BLDG	19,648>NNL SARGENT AVE	OPP OF S/C OUTSIDE LIMITS

* SERVICES TO BE RENEWED TO R. ALL OTHERS TO BE RECONNECTED



WARNING
IF POWER EQUIPMENT OR EXPLOSIVES ARE TO BE USED FOR EXCAVATION ON THIS PROJECT THE CONTRACTOR MUST:
1) NOTIFY THE GAS COMPANY OF THE PROPOSED LOCATION OF EXCAVATION.
2) TAKE PRECAUTION TO AVOID DAMAGE TO GAS COMPANY INSTALLATIONS.
SEE PROVINCIAL REGULATION 210/72 FOR DETAILS

LOCATION APPROVED UNDERGROUND STRUCTURES
SUPV. U/G STRUCTURES COMMITTEE DATE
NOTE: LOCATION OF UNDERGROUND STRUCTURES AS SHOWN ARE BASED ON THE BEST INFORMATION AVAILABLE BUT NO GUARANTEE IS GIVEN THAT ALL EXISTING UTILITIES ARE SHOWN OR THAT THE GIVEN LOCATIONS ARE EXACT. CONFIRMATION OF EXISTENCE AND EXACT LOCATION OF ALL SERVICES MUST BE OBTAINED FROM THE INDIVIDUAL UTILITIES BEFORE PROCEEDING WITH CONSTRUCTION.

B.M. ELEV.	NO.	PIPE DIAMETER CHANGE	REVISIONS	DATE	BY
	1			18/04/12	RS

DESIGNED BY	MJK	CHECKED BY	SC
DRAWN BY	RS/AJ	APPROVED BY	KZ
SCALE:	HORIZONTAL 1:250 VERTICAL 1:50		
DATE	2018 04 13	RELEASED FOR CONSTRUCTION	DATE 2018 04 13

ENGINEER'S SEAL
ORIGINAL SIGNED BY S.R.J. COURNOYER 18/04/13
CONSULTANT DRAWING NUMBER

THE CITY OF WINNIPEG
WATER AND WASTE DEPARTMENT
ENGINEERING DIVISION
2018 WATER MAIN RENEWALS
CONTRACT 5
SARGENT AVENUE
BALMORAL STREET TO
25 E OF KENNEDY STREET
SHEET 10 OF 12
CITY DRAWING NUMBER
D-15020