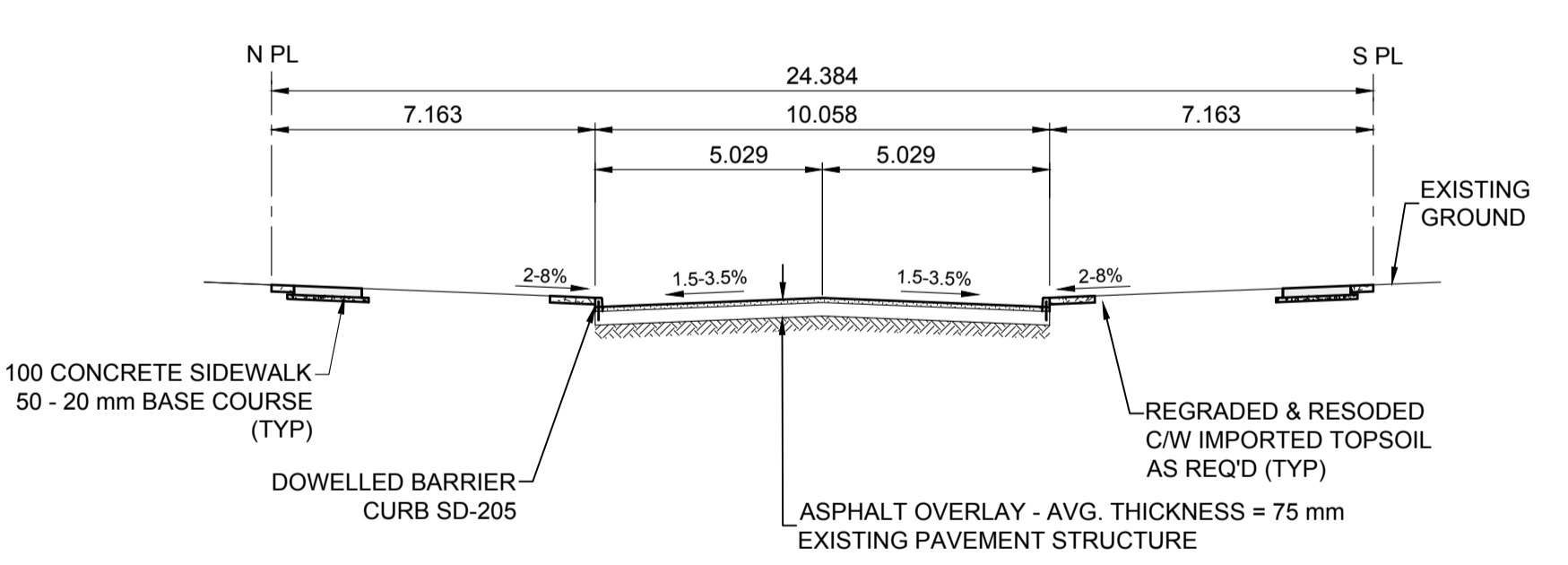
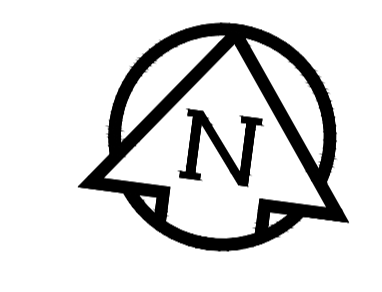
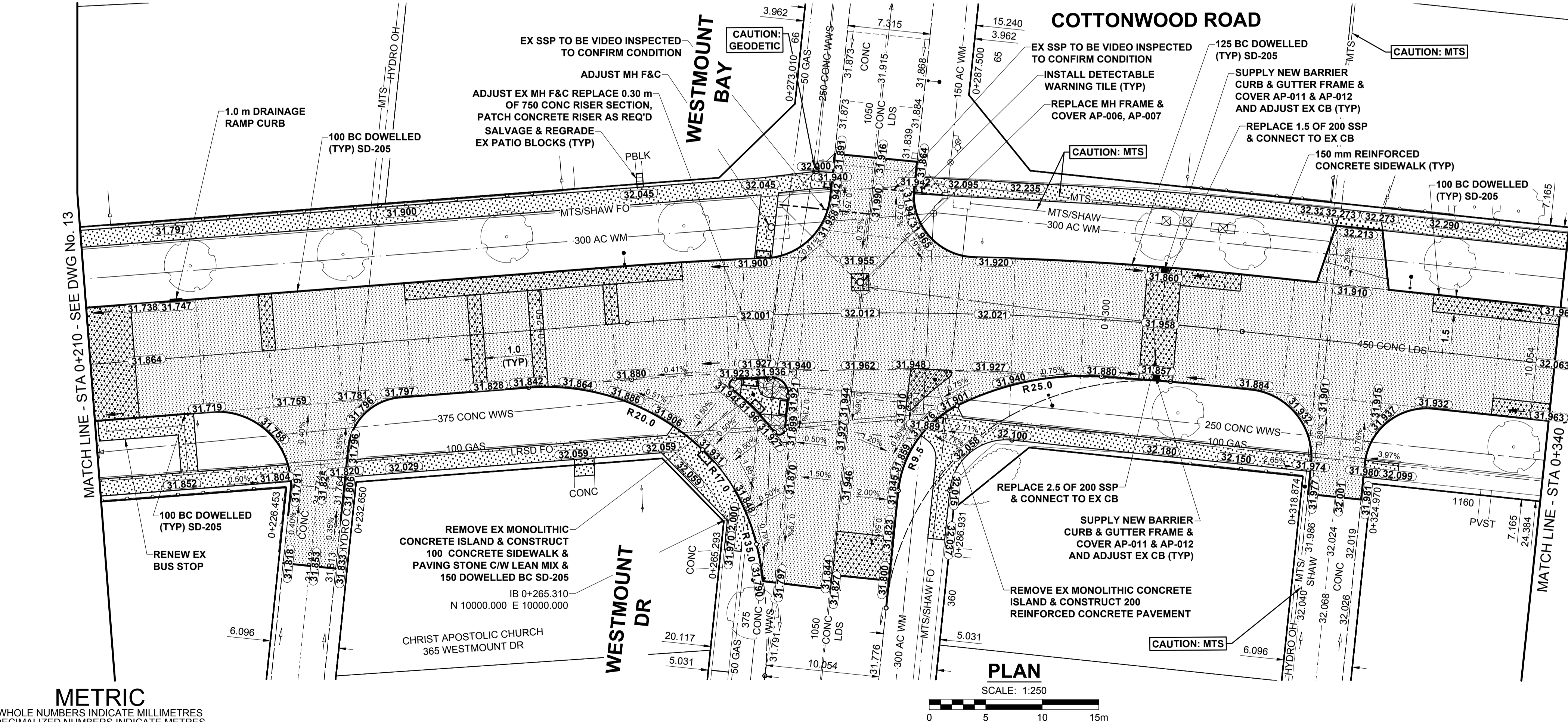


- NOTES**
- ADJUST MH AND CB RIMS TO NEW GRADES.
 - LAMP STANDARDS, HYDRO POLES, AND ANCHORS THAT REQUIRE TEMPORARY SUPPORT, REMOVAL OR REPLACEMENT, TO BE DONE SO AT THE EXPENSE OF THE CONTRACTOR AS NECESSARY.
 - CONTRACTOR TO REGRADE/RENEW EXISTING PRIVATE SIDEWALKS TO LIMITS AS SHOWN. SIDEWALKS TO BE RENEWED WITH CONCRETE UNLESS NOTED OTHERWISE.
 - CONTRACTOR TO TAKE PRECAUTIONARY STEPS TO PROTECT EXISTING TREES WITHIN THE LIMITS OF CONSTRUCTION FROM DAMAGE FROM CONSTRUCTION ACTIVITIES AS OUTLINED IN THE SPECIFICATIONS.
 - CONTRACTOR TO CONFIRM THE LOCATION OF ALL UTILITIES/SERVICES IN THE FIELD PRIOR TO CONSTRUCTION.
 - MODIFIED BARRIER CURB TO BE USED AT ALL INTERSECTION RADI, BACK LANE RADI AND BULLNOSES.
 - CONTRACTOR TO OVERLAY DRIVEWAYS TO ENSURE POSITIVE DRAINAGE TO NEW STREET GRADES. FINAL LIMITS TO BE DETERMINED IN THE FIELD BY CONTRACT ADMINISTRATOR.
 - CB SD-023 & SD-024 OFFSETS ARE DIMENSIONED TO BOC. CB SD-025 OFFSETS ARE DIMENSIONED O/C.
 - REFER TO BID OPPORTUNITY FOR DETAILS REGARDING TRAFFIC MANAGEMENT.
 - ADD 200.000 m TO ABBREVIATED ELEVATIONS TO OBTAIN GEODETIC ELEVATIONS.



METRIC
 WHOLE NUMBERS INDICATE MILLIMETRES
 DECIMALIZED NUMBERS INDICATE METRES

EXISTING		NEW	
---	GAS	○	MANHOLE
---	MTS HANDWELL/PEDESTAL	□	CATCH BASIN/CATCH PIT
---	HYDRO HANDWELL/CABINET	▣	CURB INLET WITH BOX
---	CATV/FIBRE OPTIC	●	TREE
---	TRAFFIC SIGNALS/PIT	⊕	TEST HOLE
---	LAND DRAINAGE SEWER	▬	PROPERTY LINE
---	SANITARY/COMBINED SEWER	---	SURVEY BAR
---	CB LEAD/SSP/DCP	---	FENCE
---	WATERMAIN	---	BOC/EDGE OF PAVEMENT
---	SUBDRAIN	33.000	ELEVATION (33.333)
---	DITCH	---	TRAFFIC SIGN

LOCATION APPROVED
 UNDERGROUND STRUCTURES

SUPR. U/G STRUCTURES COMMITTEE DATE

NOTE:
 LOCATION OF UNDERGROUND STRUCTURES AS SHOWN ARE BASED ON THE BEST INFORMATION AVAILABLE BUT NO GUARANTEE IS GIVEN THAT ALL EXISTING UTILITIES ARE SHOWN OR THAT THE GIVEN LOCATIONS ARE EXACT. CONFIRMATION OF EXISTENCE AND EXACT LOCATION OF ALL SERVICES MUST BE OBTAINED FROM THE INDIVIDUAL UTILITIES BEFORE PROCEEDING WITH CONSTRUCTION.

BM 55-025 S. side Monterey Rd. @ Maplehurst Rd. Tbt. in E. Conc. Foundation of William Russell Centre, No. 50 Monterey Rd. 3 m S. ELEV 232.389 m & 0.2 m below tynall stone of most N.Y. & E. projection of Bldg.

No.	REVISIONS	DATE	BY
B	ISSUED FOR TENDER	18/04/03	RPB
A	ISSUED FOR CLIENT REVIEW	18/03/09	RPB

MORRISON HERSHFIELD

DESIGNED BY WRJ CHECKED BY RPB
 DRAWN BY KMB APPROVED BY BWB
 RELEASED FOR CONSTRUCTION

HOR SCALE 1:250
 VERT SCALE 1:10

DATE 18/03/09

PROFESSIONAL'S SEAL

PRELIMINARY DRAWING

NOT TO BE USED FOR CONSTRUCTION

CONSULTANT FILE NAME
 1800598-Cottonwood-PP-02.dwg

THE CITY OF WINNIPEG
 PUBLIC WORKS DEPARTMENT
 ENGINEERING DIVISION

2018 LOCAL STREETS PACKAGE
COTTONWOOD ROAD
 MONACO BAY (E LEG) TO LAGMODIERE BLVD

REHABILITATION
 PAVING AND GRADING
 STA 0+210 TO STA 0+340

CITY DRAWING NUMBER N/A
 SHEET 14 OF 19
 DRAWING No. 14

BID OPPORTUNITY No. 124-2018