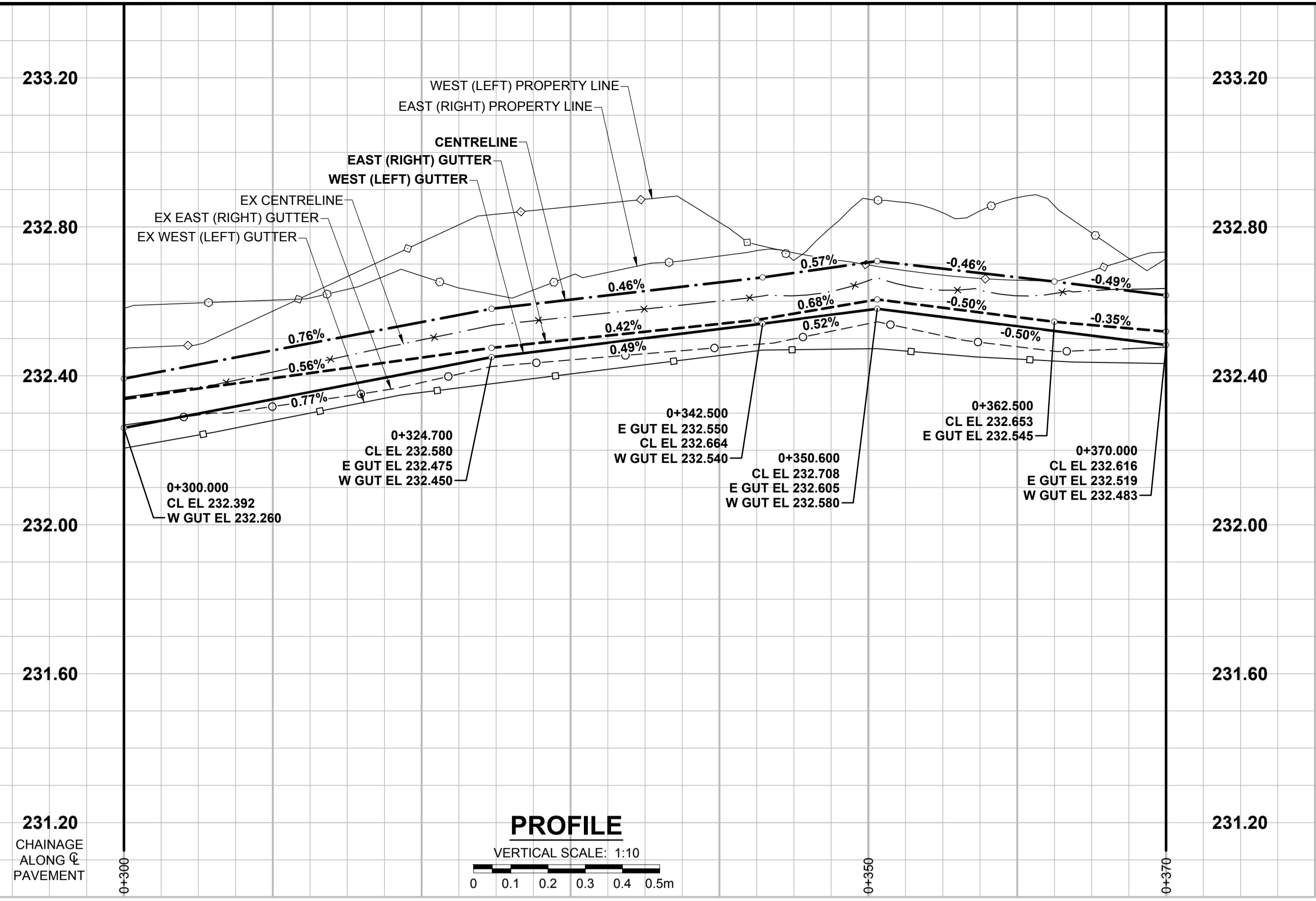
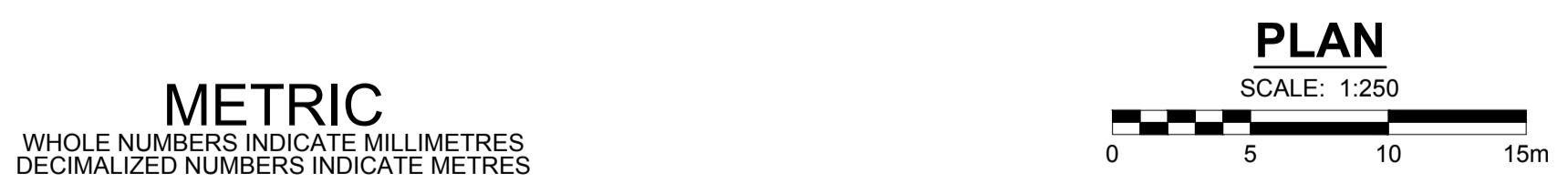
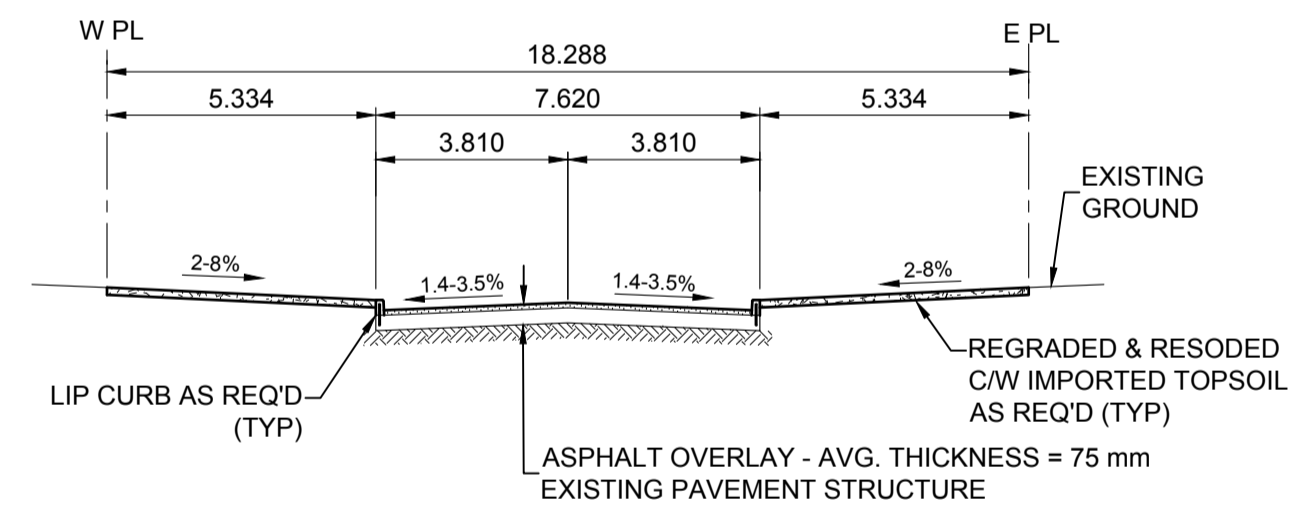
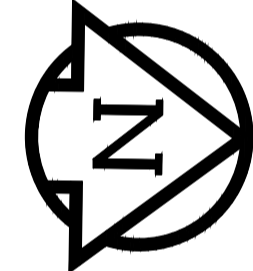
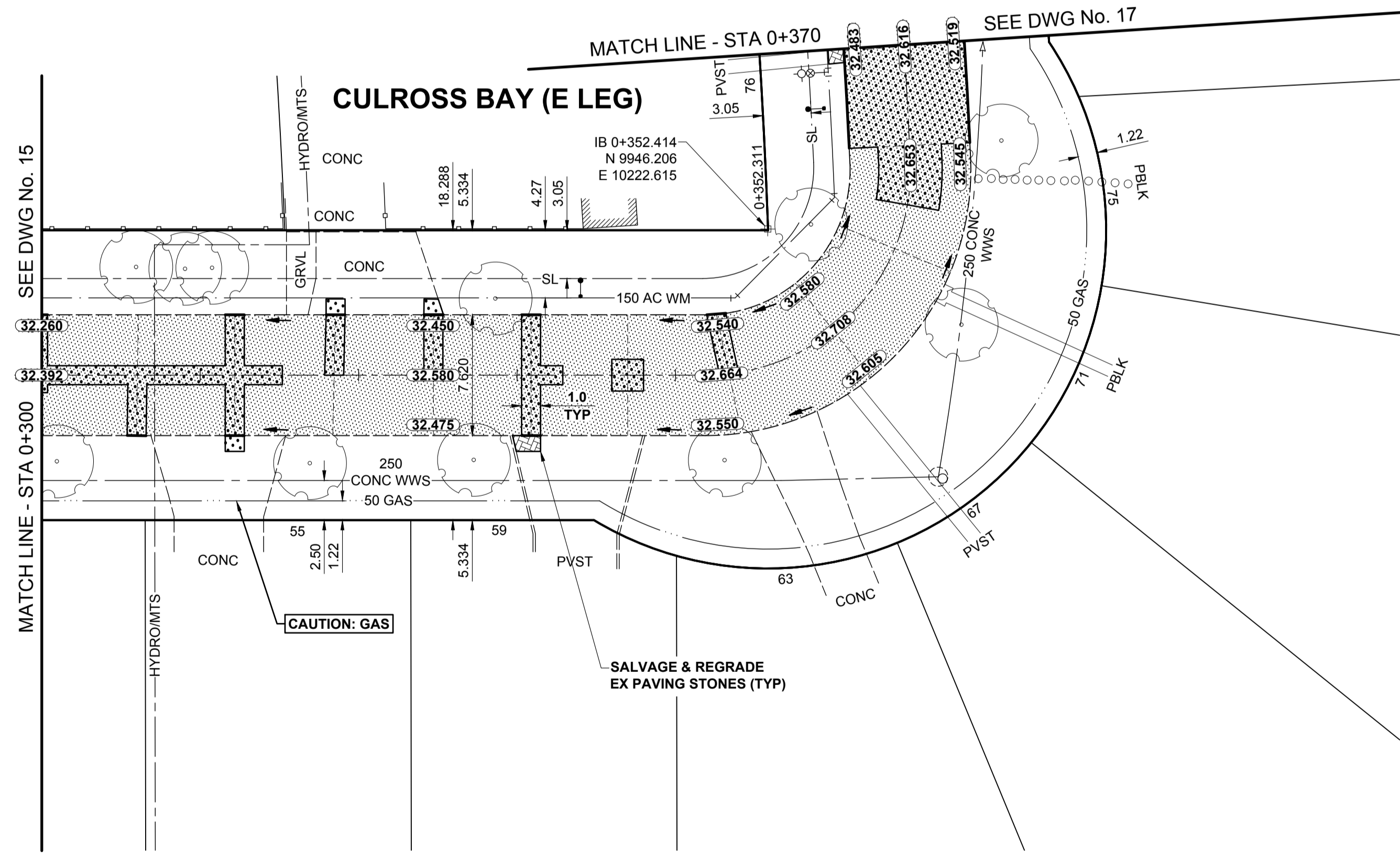


ISC A1 - 594mm x 841mm



NOTES

- ADJUST MH AND CB RIMS TO NEW GRADES.
- LAMP STANDARDS, HYDRO POLES, AND ANCHORS THAT REQUIRE TEMPORARY SUPPORT, REMOVAL OR REPLACEMENT, TO BE DONE SO AT THE EXPENSE OF THE CONTRACTOR AS NECESSARY.
- CONTRACTOR TO REGRADE/RENEW EXISTING PRIVATE SIDEWALKS TO LIMITS AS SHOWN. SIDEWALKS TO BE RENEWED WITH CONCRETE UNLESS NOTED OTHERWISE.
- CONTRACTOR TO TAKE PRECAUTIONARY STEPS TO PROTECT EXISTING TREES WITHIN THE LIMITS OF CONSTRUCTION FROM DAMAGE FROM CONSTRUCTION ACTIVITIES AS OUTLINED IN THE SPECIFICATIONS.
- CONTRACTOR TO CONFIRM THE LOCATION OF ALL UTILITIES/SERVICES IN THE FIELD PRIOR TO CONSTRUCTION.
- MODIFIED BARRIER CURB TO BE USED AT ALL INTERSECTION RADII, BACK LANE RADII AND BULLNOSES.
- CONTRACTOR TO OVERLAY DRIVEWAYS TO ENSURE POSITIVE DRAINAGE TO NEW STREET GRADES. FINAL LIMITS TO BE DETERMINED IN THE FIELD BY CONTRACT ADMINISTRATOR.
- CB SD-023 & SD-024 OFFSETS ARE DIMENSIONED TO BOC. CB SD-025 OFFSETS ARE DIMENSIONED O/C.
- REFER TO BID OPPORTUNITY FOR DETAILS REGARDING TRAFFIC MANAGEMENT.
- ADD 200.000 m TO ABBREVIATED ELEVATIONS TO OBTAIN GEODETIC ELEVATIONS.



ENGINEERS GEOSCIENTISTS MANITOBA
Certificate of Authorization
MORRISON HERSHFIELD
No. 1736

BID OPPORTUNITY No. 123-2017

---	GAS	○	MANHOLE	●	CONCRETE PAVEMENT	▨	LOCATION APPROVED
⊕	MTS HANDWELL/PEDESTAL	□	CATCH BASIN/CATCH PIT	■	CONC SIDEWALK/MEDIAN	▨	UNDERGROUND STRUCTURES
⊕	HYDRO HANDWELL/CABINET	△	CURB INLET WITH BOX	▲	ASPHALT PAVEMENT	▨	
---	CATV/FIBRE OPTIC	○	TREE	○	PAVING STONE	▨	
---	TRAFFIC SIGNALS/PIT	⊕	TEST HOLE	⊕	GRAVEL	▨	
---	LAND DRAINAGE SEWER	⊕	PROPERTY LINE	---	RAMP CURB	▨	
---	SANITARY/COMBINED SEWER	⊕	SURVEY BAR	---	PLANING/REMOVAL	▨	
---	CB LEAD/SSP/DCP	⊕	FENCE	---			
---	WATERMAIN	---	BOC/EDGE OF PAVEMENT	---			
---	SUBDRAIN	---	ELEVATION	(33.333)			
---	DITCH	---	TRAFFIC SIGN				
---	EXISTING	---	LEGEND - PLAN	---	EXISTING	---	LEGEND - PLAN
---	NEW	---	LEGEND - PLAN	---	NEW	---	LEGEND - PLAN

LOCATION APPROVED
UNDERGROUND STRUCTURES

SUPR. U/G STRUCTURES COMMITTEE DATE

NOTE:
LOCATION OF UNDERGROUND STRUCTURES AS SHOWN ARE BASED ON THE BEST INFORMATION AVAILABLE BUT NO GUARANTEE IS GIVEN THAT ALL EXISTING UTILITIES ARE SHOWN OR THAT THE GIVEN LOCATIONS ARE EXACT. CONFIRMATION OF EXISTENCE AND EXACT LOCATION OF ALL SERVICES MUST BE OBTAINED FROM THE INDIVIDUAL UTILITIES BEFORE PROCEEDING WITH CONSTRUCTION.

BM	10-021	N. side Devonshire Dr. @ Parkwater Cr.	
ELEV	232.127 m	Tilt: on top of 0.05 m sq. x 2.4 m iron tube, 2.6 m W. of E.L. Parkwater Cr. along N.L. Devonshire Dr.	
B	ISSUED FOR TENDER	18/03/27	RPB
A	ISSUED FOR CLIENT REVIEW	18/02/09	RPB
No.	REVISIONS	YY/MM/DD	BY

MORRISON HERSHFIELD		DESIGNED BY RPB		CHECKED BY WRJ	
		DRAWN BY KMB		APPROVED BY BWB	
		HOR SCALE 1:250		RELEASED FOR CONSTRUCTION	
		VERT SCALE 1:10		DATE 18/01/26	

PROFESSIONAL'S SEAL

PRELIMINARY DRAWING

NOT TO BE USED FOR CONSTRUCTION

CONSULTANT FILE NAME
1800598-Culross-PP-03.dwg

THE CITY OF WINNIPEG
PUBLIC WORKS DEPARTMENT
ENGINEERING DIVISION

2018 LOCAL STREETS PACKAGE
CULROSS BAY
CLOUSTON DR TO CLOUSTON DR
REHABILITATION
PAVING AND GRADING
STA 0+300 TO STA 0+370

CITY DRAWING NUMBER N/A

SHEET 16 OF 18

DRAWING No. 16