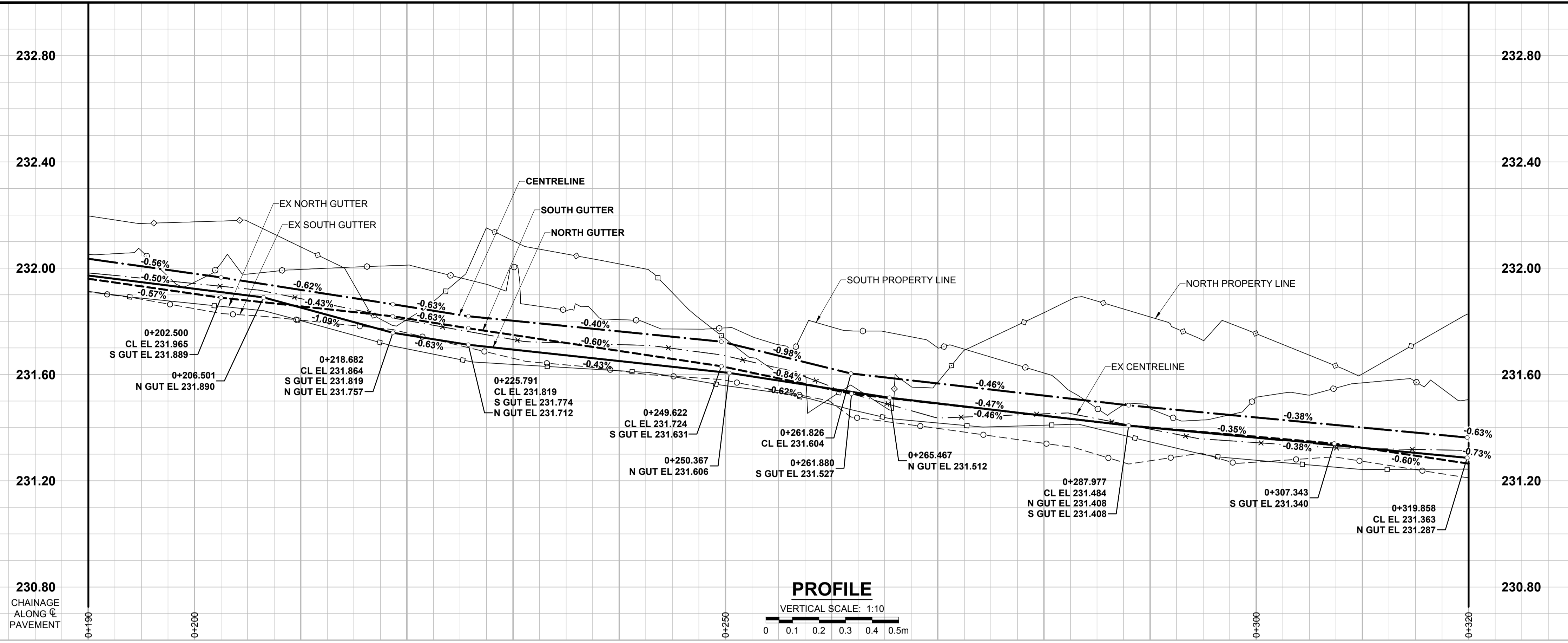
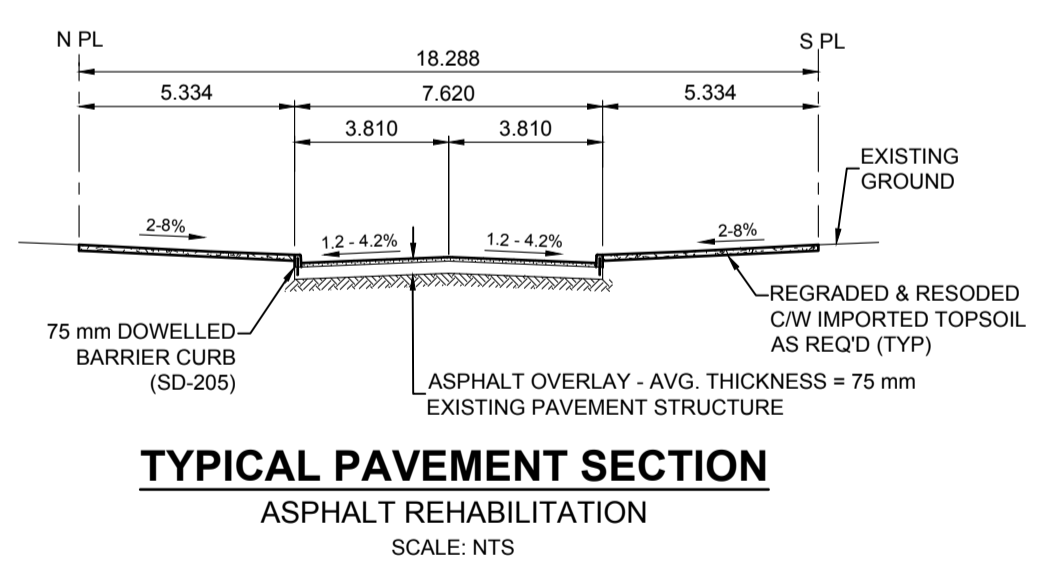
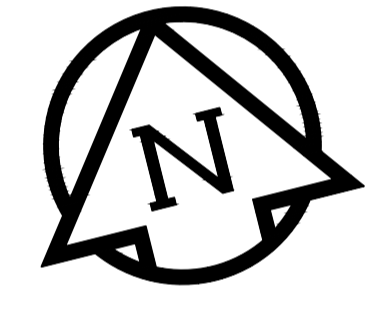
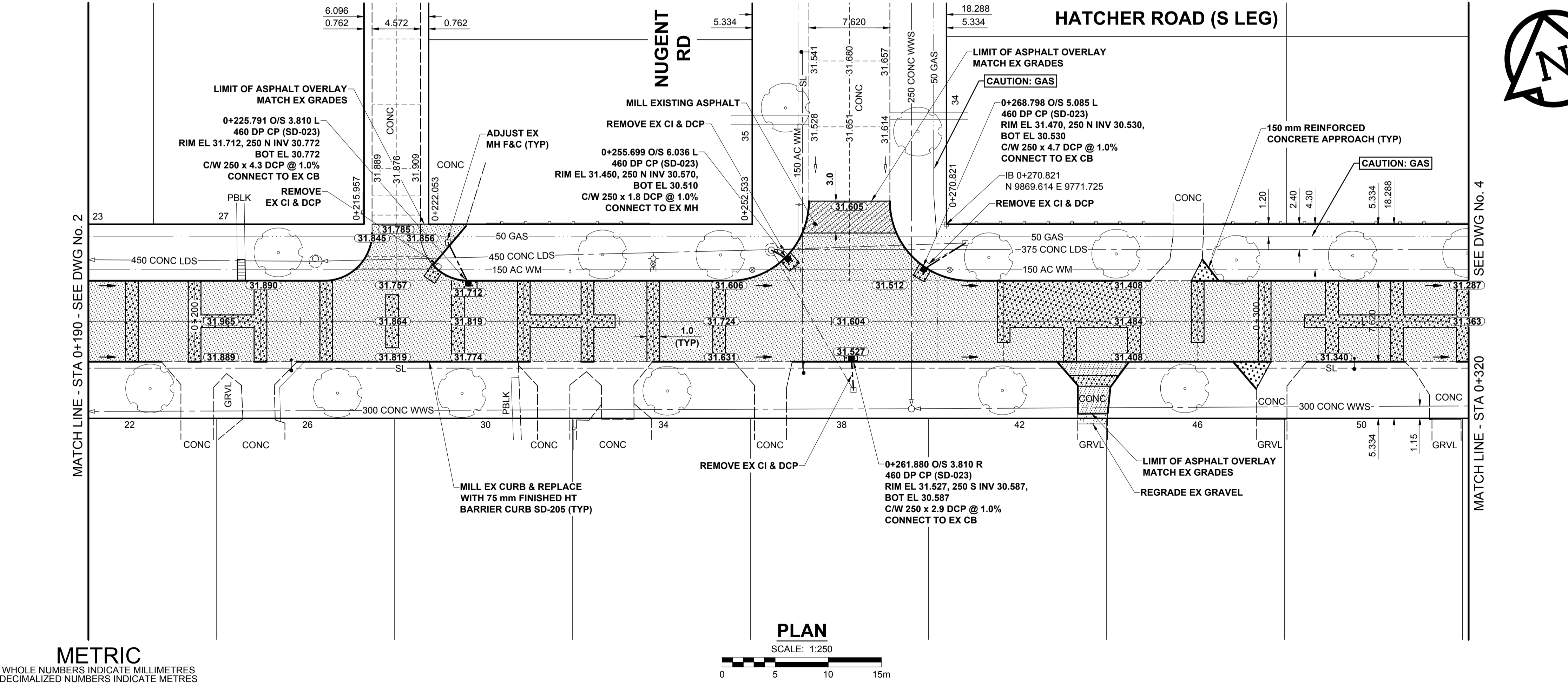


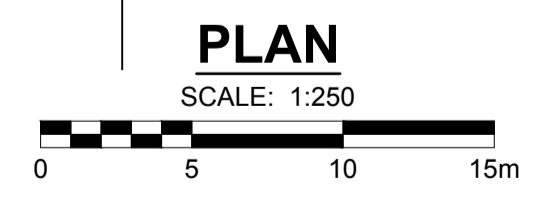
ISO A1 - 594mm x 841mm



- NOTES**
- ADJUST MH AND CB RIMS TO NEW GRADES.
  - LAMP STANDARDS, HYDRO POLES, AND ANCHORS THAT REQUIRE TEMPORARY SUPPORT, REMOVAL OR REPLACEMENT, TO BE DONE SO AT THE EXPENSE OF THE CONTRACTOR AS NECESSARY.
  - CONTRACTOR TO REGRADE/RENEW EXISTING PRIVATE SIDEWALKS TO LIMITS AS SHOWN. SIDEWALKS TO BE RENEWED WITH CONCRETE UNLESS NOTED OTHERWISE.
  - CONTRACTOR TO TAKE PRECAUTIONARY STEPS TO PROTECT EXISTING TREES WITHIN THE LIMITS OF CONSTRUCTION FROM DAMAGE FROM CONSTRUCTION ACTIVITIES AS OUTLINED IN THE SPECIFICATIONS.
  - CONTRACTOR TO CONFIRM THE LOCATION OF ALL UTILITIES/SERVICES IN THE FIELD PRIOR TO CONSTRUCTION.
  - MODIFIED BARRIER CURB TO BE USED AT ALL INTERSECTION RADII, BACK LANE RADII AND BULLNOSES.
  - CONTRACTOR TO OVERLAY DRIVEWAYS TO ENSURE POSITIVE DRAINAGE TO NEW STREET GRADES. FINAL LIMITS TO BE DETERMINED IN THE FIELD BY CONTRACT ADMINISTRATOR.
  - CB SD-023 & SD-024 OFFSETS ARE DIMENSIONED TO BOC. CB SD-025 OFFSETS ARE DIMENSIONED O/C.
  - REFER TO BID OPPORTUNITY FOR DETAILS REGARDING TRAFFIC MANAGEMENT.
  - ADD 200.000 m TO ABBREVIATED ELEVATIONS TO OBTAIN GEODETIC ELEVATIONS.



**METRIC**  
WHOLE NUMBERS INDICATE MILLIMETRES  
DECIMALIZED NUMBERS INDICATE METRES



EXISTING	LEGEND - PLAN	NEW	EXISTING	LEGEND - PLAN	NEW	EXISTING	LEGEND - PLAN	NEW	
	GAS		MANHOLE		CONCRETE PAVEMENT		CATCH BASIN/CATCH PIT		CONC SIDEWALK/MEDIAN
	MTS HANDWELL/PEDESTAL		CATCH BASIN INLET WITH BOX		ASPHALT PAVEMENT		TREE		PAVING STONE
	HYDRO HANDWELL/CABINET		TREE		GRAVEL		PROPERTY LINE		RAMP CURB
	CATV/FIBRE OPTIC		TEST HOLE		PLANING/REMOVAL		SURVEY BAR		
	TRAFFIC SIGNALS/PIT		TH-12				FENCE		
	LAND DRAINAGE SEWER		PROPERTY LINE				BOC/EDGE OF PAVEMENT		
	SANITARY/COMBINED SEWER		SURVEY BAR				ELEVATION (33.333)		
	CB LEAD/SSP/DCP		FENCE				TRAFFIC SIGN		
	WATERMAIN		BOC/EDGE OF PAVEMENT						
	SUBDRAIN		ELEVATION						
	DITCH		TRAFFIC SIGN						

**LOCATION APPROVED**  
UNDERGROUND STRUCTURES

SUPR. U/G STRUCTURES COMMITTEE DATE

**NOTE:**  
LOCATION OF UNDERGROUND STRUCTURES AS SHOWN ARE BASED ON THE BEST INFORMATION AVAILABLE BUT NO GUARANTEE IS GIVEN THAT ALL EXISTING UTILITIES ARE SHOWN OR THAT THE GIVEN LOCATIONS ARE EXACT. CONFIRMATION OF EXISTENCE AND EXACT LOCATION OF ALL SERVICES MUST BE OBTAINED FROM THE INDIVIDUAL UTILITIES BEFORE PROCEEDING WITH CONSTRUCTION.

NO.	REVISIONS	DATE	BY
B	ISSUED FOR TENDER	18/03/27	GFC
A	ISSUED FOR CLIENT REVIEW	18/02/09	GFC

DESIGNED BY	GFC	CHECKED BY	WRJ
DRAWN BY	DML	APPROVED BY	BWB
RELEASED FOR CONSTRUCTION			
HOR SCALE 1:250			
VERT SCALE 1:10			
DATE 18/02/01			

PROFESSIONAL'S SEAL

**PRELIMINARY DRAWING**

NOT TO BE USED FOR CONSTRUCTION

CONSULTANT FILE NAME  
1800598-Hatcher-PP-02.dwg

**THE CITY OF WINNIPEG**  
PUBLIC WORKS DEPARTMENT  
ENGINEERING DIVISION

**2018 LOCAL STREETS PACKAGE**  
**HATCHER ROAD**  
BOURNAIS DR TO ROUGEAU AVE  
REHABILITATION  
PAVING AND GRADING  
STA 0+190 TO STA 0+320

CITY DRAWING NUMBER: N/A  
SHEET 3 OF 18  
DRAWING No. 3

BID OPPORTUNITY No. 123-2017

