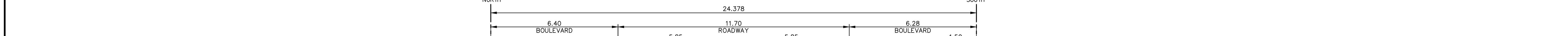
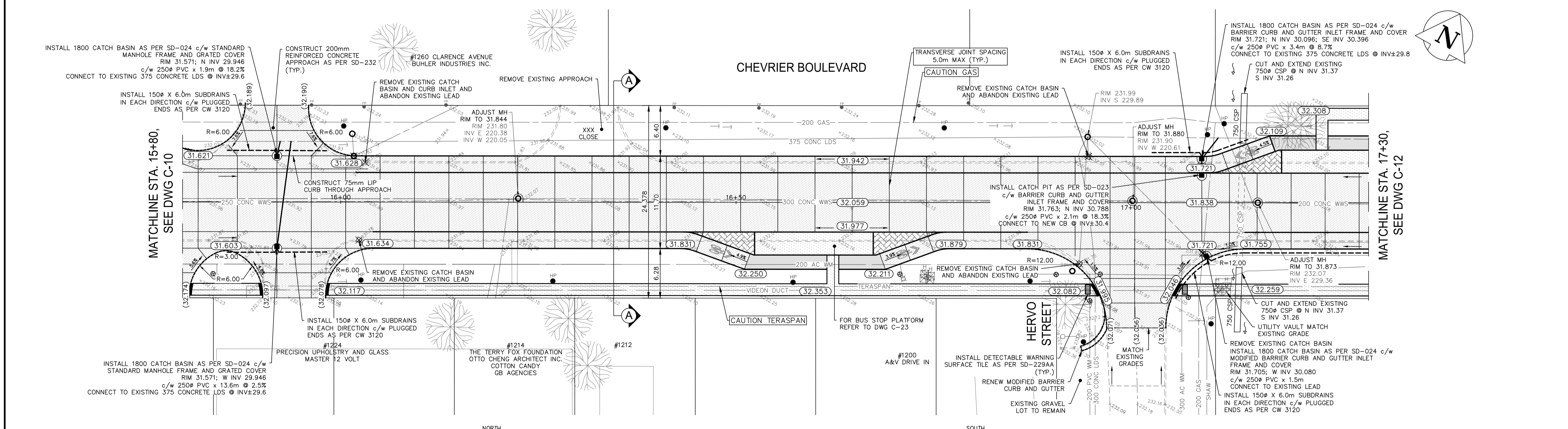


16+00 16+50 17+00



NOTES:
 1. ALL WORK AND MATERIALS TO BE IN ACCORDANCE WITH THE LATEST REVISION OF THE CITY OF WINNIPEG STANDARD CONSTRUCTION SPECIFICATIONS.
 2. CONTRACTOR TO CONFIRM THE LOCATION OF ALL UTILITIES/SERVICES IN THE FIELD PRIOR TO CONSTRUCTION.
 3. ALL ROADWAY DIMENSIONS SHOWN ARE TO BACK OF CURB.
 4. ADD 200.00 TO ABBREVIATED ELEVATIONS TO OBTAIN GEODETIC ELEVATION.
 5. PAVEMENT REPAIRS SHOWN ARE ONLY A REPRESENTATIVE APPROXIMATION OF THE TENDERED QUANTITIES.
 6. REMOVE CURB AND SIDEWALK AS IDENTIFIED BY CONTRACT ADMINISTRATOR.
 7. ALL PRIVATE WALKWAYS TO BE ADJUSTED TO NEW SIDEWALK OR TOP OF CURB ELEVATION, AS REQUIRED.
 8. MODIFIED BARRIER CURB TO BE CONSTRUCTED AT ALL INTERSECTION RADI AND APPROACH RADI.
 9. INSTALL 40MM LIP CURB THROUGH ALL APPROACHES UNLESS OTHERWISE NOTED.
 10. CONTRACTORS TO TAKE PRECAUTIONARY STEPS TO PROTECT EXISTING TREES WITHIN THE LIMITS OF CONSTRUCTION FROM DAMAGE FROM CONSTRUCTION ACTIVITIES AS OUTLINED IN THE SPECIFICATIONS.
 11. LAMP STANDARDS, HYDRO POLES, AND ANCHORS THAT REQUIRE TEMPORARY SUPPORT, REMOVAL OR REPLACEMENT, TO BE DONE SO AT THE EXPENSE OF THE CONTRACTOR AS NECESSARY.
 12. ALL BOULEVARDS TO BE SODDED UNLESS OTHERWISE NOTED. LIMITS TO BE IDENTIFIED IN THE FIELD BY THE CONTRACT ADMINISTRATOR.
 13. TRAFFIC SERVICES TO PAINT TRAFFIC LINES AND BICYCLE LANE MARKINGS (IF REQ'D).
 14. CONTRACTOR TO CONFIRM LOCATION AND LIMITS OF SEWER REPAIRS BY PERFORMING VIDEO INSPECTION AND REVIEWING WITH CONTRACT ADMINISTRATOR PRIOR TO CONSTRUCTION (IF REQ'D).
 15. ADJUST ALL WATER VALVES, HYDRANTS, MANHOLES, AND CATCH BASINS IN WORK AREA TO GRADE.

METRIC
 WHOLE NUMBERS INDICATE MILLIMETRES
 DECIMALIZED NUMBERS INDICATE METRES

EXISTING	LEGEND-PLAN	PROPOSED	EXISTING	LEGEND-PLAN	PROPOSED
---	WATER MAIN	---	---	HYDRO POLE & LIGHT STANDARD	---
---	LAND DRAINAGE SEWER	---	---	LIGHT STANDARD OR TRAFFIC SIGNAL CURB RAMP	---
---	WASTE WATER SEWER	---	---	DETECTABLE WARNING SURFACE TILE	---
---	HYDRO	---	---	EDGE OF SIDEWALK	---
---	M.T.S.	---	---	PROPERTY LINE	---
---	GAS	---	---	EDGE OF ASPHALT	---
---	SIGNALS	---	---	EDGE OF CONCRETE	---
---	MANHOLE	---	---	MODIFIED BARRIER CURB	---
---	CATCH BASIN	---	---	BARRIER CURB	---
---	CURB INLET	---	---	BARRIER CURB AND GUTTER	---
---	UTILITIES ADJUSTED	---	---	CONC SIDEWALK	---
---	HYDRANT	---	---	CONCRETE SLAB	---
---	VALVE	---	---	PAVEMENT WIDENING	---
---	GROUND GRADE	---	---	ASPHALT	---
---	PAVEMENT GRADE (32.000)	---	---	MILLED SURFACE	---
---	ANCHOR	---	---	ASPHALT JOINT REPAIR	---
---	CIVIC ADDRESS	---	---	PAVING STONES	---
---	HYDRO POLE	---	---	BULLNOSE	---
---	FENCE	---	---	LEGEND-PROFILE	---
---	EXISTING	---	---	PROPOSED	---

EXISTING	LEGEND-PROFILE	PROPOSED
---	PARKING LANE	---
---	NORTH BIKE LANE	---
---	SOUTH BIKE LANE	---
---	NORTH PROPERTY LINE	---
---	SOUTH PROPERTY LINE	---
---	NORTH SIDEWALK	---
---	SOUTH SIDEWALK	---
---	ROADWAY CENTRELINE	---
---	NORTH GUTTER	---
---	SOUTH GUTTER	---
---	LEGEND-PROFILE	---

LOCATIONS APPROVED UNDERGROUND STRUCTURES
 SIGNED BY: _____ DATE: _____
 SUPV UG STRUCTURES

LOCATION OF UNDERGROUND STRUCTURES AS SHOWN ARE BASED ON THE BEST INFORMATION AVAILABLE BUT NO GUARANTEE IS GIVEN THAT ALL EXISTING UTILITIES ARE SHOWN OR THAT THE GIVEN LOCATIONS ARE EXACT CONFIRMATION OF EXISTANCE AND EXACT LOCATION OF ALL SERVICES MUST BE OBTAINED FROM THE INDIVIDUAL UTILITIES BEFORE PROCEEDING

NO.	REVISIONS	DATE	BY
H	-	-	-
G	-	-	-
F	-	-	-
E	-	-	-
D	-	-	-
C	ISSUED FOR TENDER	2018-03-01	JP
B	ISSUED FOR UNDERGROUND STRUCTURES REVIEW	2018-02-02	JP
A	ISSUED FOR CLIENT REVIEW	2018-02-01	JP

wsp

DESIGNED BY: JP
 CHECKED BY: TP
 DRAWN BY: SB
 APPROVED BY: VM

HOR. SCALE: 1:250
 VERTICAL: 1:10

DATE: 2017-11-06

WSP Canada Limited
 Suite 111 - 93 Lombard Ave
 Winnipeg, MB R3B 3B1
 T. 204.943.3178
 F. 204.943.4948
 www.wsp.com

ENGINEER'S SEAL
V.M. MAROTI
 Member 30809
 REGISTERED PROFESSIONAL ENGINEER

CONSULTANT ACAD DWG. NO.
 17M-01932-00-C11

THE CITY OF WINNIPEG
 PUBLIC WORKS DEPARTMENT
 ENGINEERING SERVICES DIVISION

2018 INDUSTRIAL STREETS RENEWAL PROGRAM
 CHEVRIER BLVD - WAVERLEY ST TO PEMBINA HWY
 PAVEMENT RECONSTRUCTION
 STA. 15+80 TO STA. 17+30

CITY DRAWING NUMBER: ---
 SHEET: 11 OF 23
 BID NO.: 10-2018