

- NOTES:**
1. ALL WORK AND MATERIALS TO BE IN ACCORDANCE WITH THE LATEST REVISION OF THE CITY OF WINNIPEG STANDARD CONSTRUCTION SPECIFICATIONS.
 2. CONTRACTOR TO CONFIRM THE LOCATION OF ALL UTILITIES/SERVICES IN THE FIELD PRIOR TO CONSTRUCTION.
 3. ALL ROADWAY DIMENSIONS SHOWN ARE TO BACK OF CURB.
 4. ADD 200.00 TO ABBREVIATED ELEVATIONS TO OBTAIN GEODETIC ELEVATION.
 5. PAVEMENT REPAIRS SHOWN ARE ONLY A REPRESENTATIVE APPROXIMATION OF THE TENDERED QUANTITIES.
 6. RENEW CURB AND SIDEWALK AS IDENTIFIED BY CONTRACT ADMINISTRATOR.
 7. ALL PRIVATE WALKWAYS TO BE ADJUSTED TO NEW SIDEWALK OR TOP OF CURB ELEVATION, AS REQUIRED.
 8. MODIFIED BARRIER CURB TO BE CONSTRUCTED AT ALL INTERSECTION RADI AND APPROACH RADI.
 9. INSTALL 40MM LIP CURB THROUGH ALL APPROACHES UNLESS OTHERWISE NOTED.
 10. CONTRACTORS TO TAKE PRECAUTIONARY STEPS TO PROTECT EXISTING TREES WITHIN THE LIMITS OF CONSTRUCTION FROM DAMAGE FROM CONSTRUCTION ACTIVITIES AS OUTLINED IN THE SPECIFICATIONS.
 11. LAMP STANDARDS, HYDRO POLES, AND ANCHORS THAT REQUIRE TEMPORARY SUPPORT, REMOVAL OR REPLACEMENT, TO BE DONE SO AT THE EXPENSE OF THE CONTRACTOR AS NECESSARY.
 12. ALL BOULEVARDS TO BE SODDED UNLESS OTHERWISE NOTED. LIMITS TO BE IDENTIFIED IN THE FIELD BY THE CONTRACT ADMINISTRATOR.
 13. TRAFFIC SERVICES TO PAINT TRAFFIC LINES AND BICYCLE LANE MARKINGS (IF REQ'D).
 14. CONTRACTOR TO CONFIRM LOCATION AND LIMITS OF SEWER REPAIRS BY PERFORMING VIDEO INSPECTION AND REVIEWING WITH CONTRACT ADMINISTRATOR PRIOR TO CONSTRUCTION (IF REQ'D).
 15. ADJUST ALL WATER VALVES, HYDRANTS, MANHOLES, AND CATCH BASINS IN WORK AREA TO GRADE.

NOTE: These design documents are prepared solely for the use by the party with whom the design professional has entered into a contract and there are no representations of any kind made by the design professional to any party with whom the design professional has not entered into a contract.

WATER MAIN	HYDRO POLE & LIGHT STANDARD		
LAND DRAINAGE SEWER	LIGHT STANDARD OR TRAFFIC SIGNAL CURB RAMP		
WASTE WATER SEWER			
HYDRO	DETECTABLE WARNING SURFACE TILE		
M.T.S.	EDGE OF SIDEWALK		
GAS	PROPERTY LINE		
SIGNALS	EDGE OF ASPHALT		
MANHOLE	EDGE OF CONCRETE		
CATCH BASIN	MODIFIED BARRIER CURB		
CURB INLET	BARRIER CURB		
UTILITIES ADJUSTED	BARRIER CURB AND GUTTER		
HYDRANT	CONC SIDEWALK		
VALVE	CONCRETE SLAB		
GROUND GRADE	PAVEMENT WIDENING		
(32.000) PAVEMENT GRADE	ASPHALT		
ANCHOR	MILLED SURFACE		
CIVIC ADDRESS	ASPHALT JOINT REPAIR		
HYDRO POLE	PAVING STONES		
FENCE	BULLNOSE		
EXISTING LEGEND-PLAN	PROPOSED LEGEND-PLAN	EXISTING LEGEND-PROFILE	PROPOSED LEGEND-PROFILE

PARKING LANE	
NORTH BIKE LANE	
SOUTH BIKE LANE	
NORTH PROPERTY LINE	
SOUTH PROPERTY LINE	
NORTH SIDEWALK	
SOUTH SIDEWALK	
ROADWAY CENTRELINE	
NORTH GUTTER	
SOUTH GUTTER	
EXISTING LEGEND-PROFILE	PROPOSED LEGEND-PROFILE

LOCATIONS APPROVED UNDERGROUND STRUCTURES

SIGNED BY: _____ DATE: _____

LOCATION OF UNDERGROUND STRUCTURES AS SHOWN ARE BASED ON THE BEST INFORMATION AVAILABLE BUT NO GUARANTEE IS GIVEN THAT ALL EXISTING UTILITIES ARE SHOWN OR THAT THE GIVEN LOCATIONS ARE EXACT CONFIRMATION OF EXISTENCE AND EXACT LOCATION OF ALL SERVICES MUST BE OBTAINED FROM THE INDIVIDUAL UTILITIES BEFORE PROCEEDING

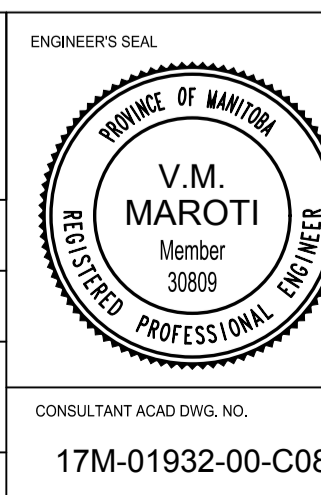
H	TOP OF TOP NUT ON FIRST HYDRANT EAST OF WAVERLEY STREET ON THE SOUTH SIDE OF CHEVRIER BOULEVARD	233.627
G		
F		
E		
D		
C	ISSUED FOR TENDER	2018-03-01
B	ISSUED FOR UNDERGROUND STRUCTURES REVIEW	2018-02-02
A	ISSUED FOR CLIENT REVIEW	2018-02-01
NO.	REVISIONS	DATE BY

WSP Canada Limited
Suite 111 - 93 Lombard Ave
Winnipeg, MB R3B 3B1
t. 204.943.3178
f. 204.943.4948
www.wsp.com

DESIGNED BY: JP
CHECKED BY: TP
DRAWN BY: SB
APPROVED BY: VM

HOR. SCALE: 1:250
VERTICAL: 1:10

RELEASED FOR CONSTRUCTION: 2017-11-06



THE CITY OF WINNIPEG
PUBLIC WORKS DEPARTMENT
ENGINEERING SERVICES DIVISION

2018 INDUSTRIAL STREETS RENEWAL PROGRAM
CHEVRIER BLVD - WAVERLEY ST TO PEMBINA HWY

PAVEMENT REHABILITATION
STA. 11+40 TO STA. 12+90

BID NO. 10-2018

METRIC
WHOLE NUMBERS INDICATE MILLIMETRES
DECIMALIZED NUMBERS INDICATE METRES

ENGINEERS GEOSCIENTIST MANITOBA
Certificate of Authorization
WSP Canada Group Limited
No. 6657