

CONSTRUCTION NOTES

1. MILL EXISTING ASPHALT PAVEMENT
2. LIMIT OF ASPHALT OVERLAY
3. REMOVE EXISTING AND CONSTRUCT NEW 100mm CONCRETE SIDEWALK (SD-228A)
4. REMOVE EXISTING CONCRETE AND CONSTRUCT NEW 150mm REINFORCED CONCRETE APPROACH (SD-232)
5. ADJUST MH, INSTALL NEW FRAME & SOLID COVER (AP-006, 007)
6. INSTALL NEW CURB AND GUTTER INLET FRAME & COVER (AP-011, 012)
7. REMOVE AND REPLACE CATCH PIT WITH CURB & GUTTER INLET FRAME (SD-023), AND CONNECT TO EXISTING DRAINAGE PIPE (CW 2130)
8. REMOVE EXISTING CURB AND CONSTRUCT NEW BARRIER CURB (SD-205)
9. REMOVE AND REPLACE MODIFIED BARRIER CURB (SD-203B)
10. INSTALL NEW CATCH PIT WITH CURB AND GUTTER INLET FRAME (SD-023), AND CONNECT TO EXISTING CATCH BASIN AS PER CW 2130
11. CONSTRUCT ASPHALT OVERLAY
12. ABANDON EXISTING CATCH PIT AS PER CW 2130

GENERAL NOTES

- A. PAVEMENT DIMENSIONS ARE TO BACK OF CURB
- B. ALL CURB RADII UNDER 15.0m SHALL BE MODIFIED
- C. ADD 200.000m TO ALL DESIGN ELEVATION TO OBTAIN GEODETIC ELEVATIONS
- D. CURB REPLACEMENT AS DIRECTED BY CONTRACT ADMINISTRATOR
- E. PAVEMENT REPAIRS SHOWN ARE ONLY A REPRESENTATIVE SAMPLE OF THE TENDERED QUANTITIES
- F. ASPHALT TIE-INS ON APPROACHES TO BE DETERMINED IN THE FIELD BY THE CONTRACT ADMINISTRATOR
- G. INSTALL DETECTABLE WARNING SURFACE TILES AT CURB RAMPS AS PER CW3326
- H.
- I.

PRELIMINARY
NOT TO BE USED FOR
CONSTRUCTION

METRIC

WHOLE NUMBERS INDICATE MILLIMETERS
DECIMALIZED NUMBERS INDICATE METERS

BID OPPORTUNITY NO. 1-2018

EXISTING	LEGEND - PLAN	PROPOSED	EXISTING	LEGEND - PLAN	PROPOSED	EXISTING	LEGEND - PROFILE	PROPOSED
	HYDRANT			LDS/WWS			CONCRETE	
	VALVE			WATERMAIN			PARTIAL DEPTH CONCRETE	
	CURB STOP			GAS			CONCRETE SIDEWALK	
	MANHOLE			TRAFFIC SIGNALS			ASPHALT	
	CATCH BASIN			HYDRO/STREET LIGHT			BRICK	
	CURB INLET			MTS			NORTH GUTTER	
	HYDRO POLE			CURB RENEWAL			CENTER LINE	
	LIGHT STANDARD			PROPERTY LINE			SOUTH GUTTER	
	TRAFFIC SIGNAL POLE			RAMP CURB			NORTH SIDEWALK	
	SURVEY BAR			ELEVATIONS			SOUTH SIDEWALK	
	GEODETIC BENCH MARK			TREE				

LOCATION APPROVED
UNDERGROUND STRUCTURES

DATE: _____

NOTE:
LOCATION OF UNDERGROUND STRUCTURES AS SHOWN ARE BASED ON THE BEST INFORMATION AVAILABLE, BUT NO GUARANTEE IS GIVEN THAT ALL EXISTING UTILITIES ARE SHOWN OR THAT THE GIVEN LOCATIONS ARE EXACT. CONFIRMATION OF EXISTENCE AND EXACT LOCATION OF ALL SERVICES MUST BE OBTAINED FROM THE INDIVIDUAL UTILITIES BEFORE PROCEEDING WITH CONSTRUCTION.

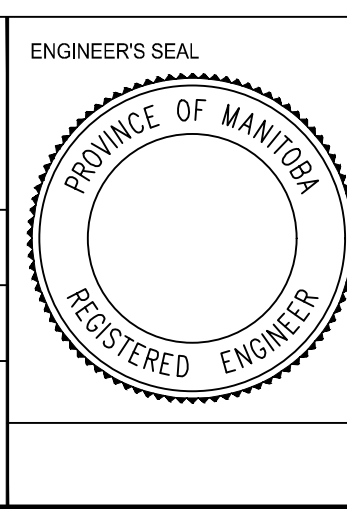
NO.	REVISIONS	DATE	BY
2.	SUBMIT FOR ENGINEERS REVIEW	18/02/22	A.T.
1.	SUBMIT FOR PLAN APPROVAL	18/02/14	A.T.

B.M. ELEV. IB @ NW CORNER 1608 LEILA AVE 232.030

ENGINEERING DIVISION
TECHNOLOGY SERVICES BRANCH
106 - 1155 PACIFIC AVE

DESIGNED BY: A.T. CHECKED BY: E.H.
DRAWN BY: A.T. APPROVED BY: _____

HOR. SCALE: 1 : 250
VERTICAL: 1 : 10
DATE: 2018/02/26



THE CITY OF WINNIPEG
PUBLIC WORKS DEPARTMENT

ROBERTS CRES
FROM JEFFERSON AVE TO AGNES ARNOLD PL
ASPHALT OVERLAY AND ASSOCIATED WORKS
FROM STA. 2+30 TO STA. 3+50

CITY DRAWING NUMBER SE-18-34
SHEET 29 OF 33

2