

- CONSTRUCTION NOTES**
- MILL EXISTING ASPHALT PAVEMENT
  - LIMIT OF ASPHALT OVERLAY
  - REMOVE EXISTING AND CONSTRUCT NEW 100mm CONCRETE SIDEWALK (SD-228A)
  - REMOVE EXISTING CONCRETE AND CONSTRUCT NEW 150mm REINFORCED CONCRETE APPROACH (SD-232)
  - ADJUST MH, INSTALL NEW FRAME & SOLID COVER (AP-006, 007)
  - INSTALL NEW CURB AND GUTTER INLET FRAME & COVER (AP-011, 012)
  - REMOVE AND REPLACE CATCH PIT WITH CURB & GUTTER INLET FRAME (SD-023), AND CONNECT TO EXISTING DRAINAGE PIPE (CW 2130)
  - REMOVE EXISTING CURB AND CONSTRUCT NEW BARRIER CURB (SD-205)
  - REMOVE AND REPLACE MODIFIED BARRIER CURB (SD-203B)
  - INSTALL NEW CATCH PIT WITH CURB AND GUTTER INLET FRAME (SD-023), AND CONNECT TO EXISTING CATCH BASIN AS PER CW 2130
  - CONSTRUCT ASPHALT OVERLAY
  - ABANDON EXISTING CATCH PIT AS PER CW 2130

- GENERAL NOTES**
- PAVEMENT DIMENSIONS ARE TO BACK OF CURB
  - ALL CURB RADII UNDER 15.0m SHALL BE MODIFIED
  - ADD 200.00mm TO ALL DESIGN ELEVATION TO OBTAIN GEODETIC ELEVATIONS
  - CURB REPLACEMENT AS DIRECTED BY CONTRACT ADMINISTRATOR
  - PAVEMENT REPAIRS SHOWN ARE ONLY A REPRESENTATIVE SAMPLE OF THE TENDERED QUANTITIES
  - ASPHALT TIE-INS ON APPROACHES TO BE DETERMINED IN THE FIELD BY THE CONTRACT ADMINISTRATOR
  - INSTALL DETECTABLE WARNING SURFACE TILES AT CURB RAMPS AS PER CW3326
  - 
  -

**PRELIMINARY**  
NOT TO BE USED FOR  
CONSTRUCTION

**METRIC**  
WHOLE NUMBERS INDICATE MILLIMETERS  
DECIMALIZED NUMBERS INDICATE METERS

EXISTING	LEGEND - PLAN	PROPOSED	EXISTING	LEGEND - PLAN	PROPOSED	EXISTING	LEGEND - PROFILE	PROPOSED
⊕	HYDRANT	◆	---	LDS/WWS	---	▨	CONCRETE	▨
⊗	VALVE	●	---	WATERMAIN	---	▨	PARTIAL DEPTH	▨
○	CURB STOP	●	---	GAS	---	▨	CONCRETE SIDEWALK	▨
○	MANHOLE	●	---	TRAFFIC SIGNALS	---	▨	ASPHALT	▨
□	CATCH BASIN	■	---	HYDRO/STREET LIGHT	---	▨	BRICK	▨
△	CURB INLET	▲	---	MTS	---	▨	NORTH GUTTER	▨
○	HYDRO POLE	●	---	CURB RENEWAL	---	▨	CENTER LINE	▨
○	LIGHT STANDARD	●	---	PROPERTY LINE	---	▨	SOUTH GUTTER	▨
○	TRAFFIC SIGNAL POLE	●	---	RAMP CURB	---	▨	NORTH SIDEWALK	▨
+	SURVEY BAR	+	---	ELEVATIONS	(31.000)	▨	SOUTH SIDEWALK	▨
⊕	GEODETIC BENCH MARK	⊕	---	TREE	---	▨		

**LOCATION APPROVED UNDERGROUND STRUCTURES**

DATE: \_\_\_\_\_

NOTE: LOCATION OF UNDERGROUND STRUCTURES AS SHOWN ARE BASED ON THE BEST INFORMATION AVAILABLE, BUT NO GUARANTEE IS GIVEN THAT ALL EXISTING UTILITIES ARE SHOWN OR THAT THE GIVEN LOCATIONS ARE EXACT. CONFIRMATION OF EXISTENCE AND EXACT LOCATION OF ALL SERVICES MUST BE OBTAINED FROM THE INDIVIDUAL UTILITIES BEFORE PROCEEDING WITH CONSTRUCTION.

NO.	REVISIONS	DATE	BY
2	SUBMIT FOR ENGINEERS REVIEW	18/02/22	A.T.
1	SUBMIT FOR PLAN APPROVAL	18/02/14	A.T.

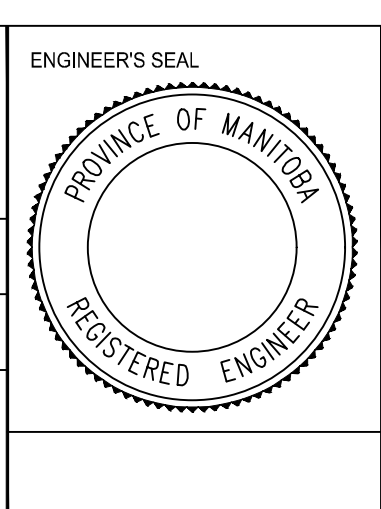
IB @ NE CORNER 102 ANGES ARNOLD PL  
231.771

**ENGINEERING DIVISION**  
TECHNOLOGY SERVICES BRANCH  
106 - 1155 PACIFIC AVE

DESIGNED BY: A.T.      CHECKED BY: E.H.  
DRAWN BY: A.T.      APPROVED BY: \_\_\_\_\_

HOR. SCALE: 1 : 250  
VERTICAL: 1 : 10

DATE: 2018/02/26



**THE CITY OF WINNIPEG**  
PUBLIC WORKS DEPARTMENT

**ROBERTS CRES**  
FROM JEFFERSON AVE TO AGNES ARNOLD PL  
ASPHALT OVERLAY AND ASSOCIATED WORKS  
FROM STA. 0+95 TO STA. 2+30

CITY DRAWING NUMBER: SE-18-33  
SHEET 28 OF 33

1