

- CONSTRUCTION NOTES**
1. REMOVE EXISTING CATCH PIT AS PER CW 2130
 2. INSTALL NEW 1800 CATCHBASIN WITH CURB & GUTTER INLET (SD-024) CONNECT TO EXISTING CB LEAD AS PER CW 2130
 3. ABANDON EXISTING CATCH BASIN AS PER CW 2130
 4. REMOVE EXISTING AND CONSTRUCT NEW 100mm CONCRETE SIDEWALK (SD-228A)
 5. MILL EXISTING ASPHALT PAVEMENT
 6. REMOVE AND REPLACE BARRIER CURB 125mm REVEAL (SD-206A)
 7. REMOVE EXISTING CONCRETE SIDEWALK
 8. REMOVE AND REPLACE MODIFIED BARRIER CURB (SD-203B)
 9. REMOVE EXISTING PAVEMENT AND CONSTRUCT NEW 150mm REINFORCED CONCRETE PAVEMENT
 10. INSTALL NEW FRAME AND SOLID COVER (AP-006, AP-007)

- GENERAL NOTES**
- A. PAVEMENT DIMENSIONS ARE TO BACK OF CURB
 - B. ALL CURB RADII UNDER 15.0m SHALL BE MODIFIED
 - C. ADD 200.000m TO ALL DESIGN ELEVATION TO OBTAIN GEODETIC ELEVATIONS
 - D. CURB REPLACEMENT AS DIRECTED BY CONTRACT ADMINISTRATOR
 - E. ASPHALT TIE-INS ON APPROACHES TO BE DETERMINED IN THE FIELD BY THE CONTRACT ADMINISTRATOR

PRELIMINARY
NOT TO BE USED FOR
CONSTRUCTION

METRIC
WHOLE NUMBERS INDICATE MILLIMETERS
DECIMALIZED NUMBERS INDICATE METERS

BID OPPORTUNITY NO. 1-2018

⊕	HYDRANT	◆	---	LDS/WWS	---	---	CONCRETE	▨
⊗	VALVE	●	---	WATERMAIN	---	---	CONCRETE SIDEWALK	▩
⊚	CURB STOP	●	---	GAS	---	---	ASPHALT	▩
○	MANHOLE	●	---	TRAFFIC SIGNALS	---	EXISTING	LEGEND - PLAN	PROPOSED
□	CATCH BASIN	●	---	HYDRO/STREET LIGHT	---	---	---	---
△	CURB INLET	▲	---	MTS	---	---	---	---
⊙	HYDRO POLE	●	---	CURB RENEWAL	---	---	NORTH GUTTER	---
⊙	LIGHT STANDARD	●	---	PROPERTY LINE	---	---	CENTER LINE	---
⊕	TRAFFIC SIGNAL POLE	●	---	RAMP CURB	---	---	SOUTH GUTTER	---
⊕	SURVEY BAR	◆	---	ELEVATIONS	(31.000)	---	NORTH SIDEWALK	---
⊕	GEODETIC BENCH MARK	⊕	---	TREE	---	---	SOUTH SIDEWALK	---
EXISTING	LEGEND - PLAN	PROPOSED	EXISTING	LEGEND - PLAN	PROPOSED	EXISTING	LEGEND - PROFILE	PROPOSED

LOCATION APPROVED
UNDERGROUND STRUCTURES

SUPPL. U/G STRUCTURES COMMITTEE DATE

NOTE:
LOCATION OF UNDERGROUND STRUCTURES AS SHOWN ARE BASED ON THE BEST INFORMATION AVAILABLE. BUT NO GUARANTEE IS GIVEN THAT ALL EXISTING UTILITIES ARE SHOWN OR THAT THE GIVEN LOCATIONS ARE EXACT. CONFIRMATION OF EXISTENCE AND EXACT LOCATION OF ALL SERVICES MUST BE OBTAINED FROM THE INDIVIDUAL UTILITIES BEFORE PROCEEDING WITH CONSTRUCTION.

B.M. ELEV. 232.004

I.B. @ NW CORNER OF 110 FIFE PEONY AVE

1.	SUBMIT FOR PLAN APPROVAL	15/02/18	C.W.
NO.	REVISIONS	DATE	BY

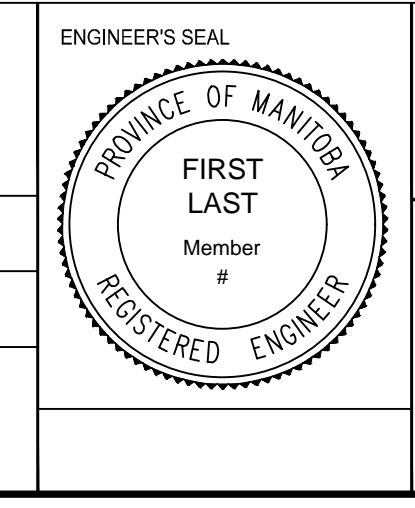
ENGINEERING DIVISION
TECHNOLOGY SERVICES BRANCH
106 - 1155 PACIFIC AVE

DESIGNED BY C.W. CHECKED BY C.H.

DRAWN BY C.W. APPROVED BY

HOR. SCALE: 1 : 250
VERTICAL: 1 : 10

DATE: 2018/02/27



THE CITY OF WINNIPEG
PUBLIC WORKS DEPARTMENT

PEONY AVE
FROM VERBENIA ST TO VIOLA ST
PAVEMENT REHABILITATION AND ASSOCIATED WORKS
FROM STA. 4+54 TO STA. 5+66

CITY DRAWING NUMBER SE-18-31
SHEET 26 OF 33

4