

- CONSTRUCTION NOTES**
- MILL EXISTING ASPHALT PAVEMENT AS DIRECTED BY THE CONTRACT ADMINISTRATOR WHERE REQUIRED TO CORRECT DRAINAGE OR REPAIR DETERIORATED PAVEMENT
 - INSTALL NEW 1800 CATCHBASIN WITH CURB & GUTTER INLET (SD-024) CONNECT TO EXISTING CB LEAD AS PER CW 2130
 - REMOVE EXISTING CATCH BASIN
 - REMOVE EXISTING AND CONSTRUCT NEW 100mm CONCRETE SIDEWALK (SD-228A)
 - INSTALL NEW CURB AND GUTTER INLET FRAME & COVER (AP-011, 012)
 - REMOVE AND REPLACE 1800 CATCHBASIN WITH CURB & GUTTER INLET (SD-024) CONNECT TO EXISTING CB LEAD AS PER CW 2130
 - REMOVE EXISTING CONCRETE AND CONSTRUCT NEW 150mm REINFORCED CONCRETE APPROACH (SD- 232)
 - REMOVE EXISTING CURB AND GUTTER (450mm) AND REPLACE WITH 600mm BARRIER CURB AND GUTTER
 - ADJUST MH, INSTALL NEW FRAME & SOLID COVER (AP- 006, 007)
 - INSTALL NEW 1800 CATCHBASIN WITH ROUND FRAME AND GRATED COVER (SD-025) CONNECT TO EXISTING CB LEAD AS PER CW 2130

- GENERAL NOTES**
- PAVEMENT DIMENSIONS ARE TO BACK OF CURB
 - ALL CURB RADII UNDER 15.0m SHALL BE MODIFIED
 - ADD 200.000m TO ALL DESIGN ELEVATION TO OBTAIN GEODETIC ELEVATIONS
 - CURB REPLACEMENT AS DIRECTED BY CONTRACT ADMINISTRATOR
 - PAVEMENT REPAIRS SHOWN ARE ONLY A REPRESENTATIVE SAMPLE OF THE TENDERED QUANTITIES
 - ASPHALT TIE-INS ON APPROACHES TO BE DETERMINED IN THE FIELD BY THE CONTRACT ADMINISTRATOR
 - INSTALL DETECTABLE WARNING SURFACE TILES AT CURB RAMPS AS PER CW3326
 -
 -

PRELIMINARY
NOT TO BE USED FOR
CONSTRUCTION

METRIC
WHOLE NUMBERS INDICATE MILLIMETERS
DECIMALIZED NUMBERS INDICATE METERS
BID OPPORTUNITY NO. 1-2018

EXISTING	LEGEND - PLAN	PROPOSED	EXISTING	LEGEND - PLAN	PROPOSED	EXISTING	LEGEND - PROFILE	PROPOSED
⊕	HYDRANT	⊕	---	LDS/WWS	---	▒	CONCRETE	▒
⊗	VALVE	⊗	---	WATERMAIN	---	▒	CONCRETE SIDEWALK	▒
⊙	CURB STOP	⊙	---	GAS	---	▒	ASPHALT	▒
○	MANHOLE	○	---	TRAFFIC SIGNALS	---	▒	BRICK	▒
□	CATCH BASIN	□	---	HYDRO/STREET LIGHT	---	▒	FENCE - WOOD	▒
△	CURB INLET	△	---	MTS	---	▒	LEGEND - PLAN	PROPOSED
⊖	HYDRO POLE	⊖	---	CURB RENEWAL	---	▒	NORTH / WEST GUTTER	---
⊕	LIGHT STANDARD	⊕	---	PROPERTY LINE	---	▒	CENTER LINE	---
⊕	TRAFFIC SIGNAL POLE	⊕	---	RAMP CURB	---	▒	SOUTH / EAST GUTTER	---
⊕	SURVEY BAR	⊕	---	ELEVATIONS	(231.000)	---	NORTH BOULEVARD	---
⊕	GEODETIC BENCH MARK	⊕	---	TREE	---	---	SOUTH SIDEWALK	---

LOCATION APPROVED UNDERGROUND STRUCTURES

DATE

NOTE:
LOCATION OF UNDERGROUND STRUCTURES AS SHOWN ARE BASED ON THE BEST INFORMATION AVAILABLE BUT NO GUARANTEE IS GIVEN THAT ALL EXISTING UTILITIES ARE SHOWN OR THAT THE GIVEN LOCATIONS ARE EXACT. CONFIRMATION OF EXISTENCE AND EXACT LOCATION OF ALL SERVICES MUST BE OBTAINED FROM THE INDIVIDUAL UTILITIES BEFORE PROCEEDING WITH CONSTRUCTION.

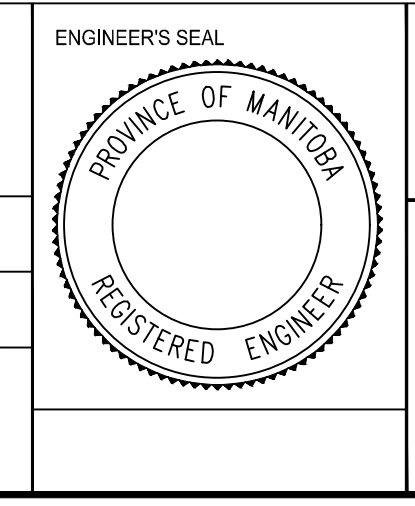
NO.	REVISIONS	DATE	BY
2	SUBMIT FOR ENGINEERS REVIEW	18/02/22	A.T.
1	SUBMIT FOR PLAN APPROVAL	18/02/14	A.T.

B.M. IB @ NW CORNER 160 GARDEN GROVE DR
ELEV. 234.549

ENGINEERING DIVISION
TECHNOLOGY SERVICES BRANCH
106 - 1155 PACIFIC AVE

DESIGNED BY A.T. CHECKED BY E.H.
DRAWN BY A.T. APPROVED BY

HOR. SCALE: 1 : 250
VERTICAL: 1 : 10
DATE 2018/02/27



THE CITY OF WINNIPEG
PUBLIC WORKS DEPARTMENT

GARDEN GROVE DRIVE
FROM BURROWS AVE TO FAIRGROVE BAY (WEST LEG)
ASPHALT OVERLAY AND ASSOCIATED WORKS
FROM STA. 3+25 TO STA. 4+50

CITY DRAWING NUMBER
SE-18-26
SHEET 21 OF 33
3