

- CONSTRUCTION NOTES**
- MILL EXISTING ASPHALT PAVEMENT AS DIRECTED BY THE CONTRACT ADMINISTRATOR WHERE REQUIRED TO CORRECT DRAINAGE OR REPAIR DETERIORATED PAVEMENT
 - INSTALL NEW 1800 CATCHBASIN WITH CURB & GUTTER INLET (SD-024) CONNECT TO EXISTING CB LEAD AS PER CW 2130
 - REMOVE EXISTING CATCH BASIN
 - REMOVE EXISTING AND CONSTRUCT NEW 100mm CONCRETE SIDEWALK (SD-228A)
 - INSTALL NEW CURB AND GUTTER INLET FRAME & COVER (AP-011, 012)
 - REMOVE AND REPLACE 1800 CATCHBASIN WITH CURB & GUTTER INLET (SD-024) CONNECT TO EXISTING CB LEAD AS PER CW 2130
 - REMOVE EXISTING CONCRETE AND CONSTRUCT NEW 150mm REINFORCED CONCRETE APPROACH (SD-232)
 - REMOVE EXISTING CURB AND GUTTER (450mm) AND REPLACE WITH 600mm BARRIER CURB AND GUTTER
 - ADJUST MH, INSTALL NEW FRAME & SOLID COVER (AP-006, 007)
 - INSTALL NEW 1800 CATCHBASIN WITH ROUND FRAME AND GRATED COVER (SD-025) CONNECT TO EXISTING CB LEAD AS PER CW 2130

- GENERAL NOTES**
- PAVEMENT DIMENSIONS ARE TO BACK OF CURB
 - ALL CURB RADII UNDER 15.0m SHALL BE MODIFIED
 - ADD 200.000m TO ALL DESIGN ELEVATION TO OBTAIN GEODETIC ELEVATIONS
 - CURB REPLACEMENT AS DIRECTED BY CONTRACT ADMINISTRATOR
 - PAVEMENT REPAIRS SHOWN ARE ONLY A REPRESENTATIVE SAMPLE OF THE TENDERED QUANTITIES
 - ASPHALT TIE-INS ON APPROACHES TO BE DETERMINED IN THE FIELD BY THE CONTRACT ADMINISTRATOR
 - INSTALL DETECTABLE WARNING SURFACE TILES AT CURB RAMPS AS PER CW3326
 -
 -

PRELIMINARY
NOT TO BE USED FOR
CONSTRUCTION

METRIC
WHOLE NUMBERS INDICATE MILLIMETERS
DECIMALIZED NUMBERS INDICATE METERS

BID OPPORTUNITY NO. 1-2018

⊕	HYDRANT	◆	---	LDS/WWS	---	CONCRETE	▨
⊗	VALVE	●	---	WATERMAIN	---	CONCRETE SIDEWALK	▨
⊙	CURB STOP	●	---	GAS	---	ASPHALT	▨
○	MANHOLE	●	---	TRAFFIC SIGNALS	---	BRICK	▨
□	CATCH BASIN	■	---	HYDRO/STREET LIGHT	---	FENCE - WOOD	▨
△	CURB INLET	▲	---	MTS	---	LEGEND - PLAN	▨
⊖	HYDRO POLE	●	---	CURB RENEWAL	---	NORTH / WEST GUTTER	---
⊙	LIGHT STANDARD	●	---	PROPERTY LINE	---	CENTER LINE	---
⊕	TRAFFIC SIGNAL POLE	●	---	RAMP CURB	---	SOUTH / EAST GUTTER	---
⊕	SURVEY BAR	◆	---	ELEVATIONS	(231.000)	NORTH BOULEVARD	---
⊕	GEODETIC BENCH MARK	◆	---	TREE	---	SOUTH SIDEWALK	---
⊕	EXISTING	---	---	LEGEND - PLAN	---	LEGEND - PROFILE	---
⊕	LEGEND - PLAN	---	---	PROPOSED	---	PROPOSED	---

LOCATION APPROVED
UNDERGROUND STRUCTURES

NO. 1. SUBMIT FOR PLAN APPROVAL 18/02/14 A.T.

NO. 2. SUBMIT FOR ENGINEERS REVIEW 18/02/22 A.T.

DATE 2018/02/27

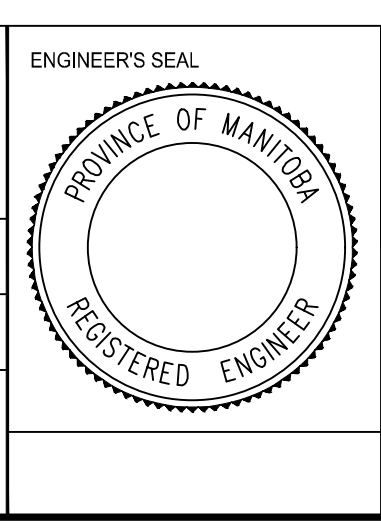
ENGINEERING DIVISION
TECHNOLOGY SERVICES BRANCH
106 - 1155 PACIFIC AVE

DESIGNED BY A.T. CHECKED BY E.H.

DRAWN BY A.T. APPROVED BY

HOR. SCALE: 1 : 250
VERTICAL: 1 : 10

DATE 2018/02/27



THE CITY OF WINNIPEG
PUBLIC WORKS DEPARTMENT

GARDEN GROVE DRIVE
FROM BURROWS AVE TO FAIRGROVE BAY (WEST LEG)
ASPHALT OVERLAY AND ASSOCIATED WORKS
FROM STA. 2+10 TO STA. 3+25

CITY DRAWING NUMBER
SE-18-25
SHEET 20 OF 33

2