

- CONSTRUCTION NOTES**
- INSTALL NEW 1800 CATCHBASIN WITH CURB & GUTTER INLET (SD-024) CONNECT TO SEWER AS PER CW 2130
 - ABANDON EXISTING CATCH BASIN AS PER CW 2130
 - RECONSTRUCT WITH 150mm REINFORCED CONCRETE PAVEMENT AND 50mm ASPHALT OVERLAY
 - RECONSTRUCT 150mm REINFORCED CONCRETE PAVEMENT
 - REMOVE EXISTING CURB AND CONSTRUCT NEW CONCRETE CURB AND GUTTER (SD-200) WITH MODIFIED BARRIER CURB (SD-203D)
 - REMOVE EXISTING PAVEMENT AND CONSTRUCT NEW 150mm REINFORCED CONCRETE PAVEMENT
 - REMOVE EXISTING CONCRETE SIDEWALK
 - INSTALL 15m SUBDRAINS (SD-245) CONNECT TO CATCH BASIN AND CAP ENDS AS PER CW 3120 OR AS DIRECTED BY CONTRACT ADMINISTRATOR
 - REMOVE EXISTING AND CONSTRUCT NEW 100mm CONCRETE SIDEWALK (SD-228A)
 - REMOVE EXISTING PAVEMENT AND CONSTRUCT NEW 100mm ASPHALT PAVEMENT TYP.
 - INSTALL 20m SUBDRAINS (SD-245) CONNECT TO CATCHBASIN AND CAP ENDS AS PER CW 3120
 - ABANDON EXISTING CATCH PIT AS PER CW 2130
- GENERAL NOTES**
- PAVEMENT DIMENSIONS ARE TO BACK OF CURB
 - ALL CURB RADII UNDER 15.0m SHALL BE MODIFIED
 - ADD 200.000m TO ALL DESIGN ELEVATION TO OBTAIN GEODETIC ELEVATIONS
 - CURB REPLACEMENT AS DIRECTED BY CONTRACT ADMINISTRATOR

PRELIMINARY
NOT TO BE USED FOR
CONSTRUCTION

METRIC
WHOLE NUMBERS INDICATE MILLIMETERS
DECIMALIZED NUMBERS INDICATE METERS

EXISTING	LEGEND - PLAN	PROPOSED	EXISTING	LEGEND - PLAN	PROPOSED	EXISTING	LEGEND - PROFILE	PROPOSED
⊕	HYDRANT	◆	---	LDS/WWS	---	▒	CONCRETE	▒
⊗	VALVE	◆	---	WATERMAIN	---	▒	CONCRETE SIDEWALK	▒
⊙	CURB STOP	◆	---	GAS	---	▒	ASPHALT	▒
⊚	MANHOLE	◆	---	TRAFFIC SIGNALS	---	▒	UTILITY MAN HOLE	▒
⊠	CATCH BASIN	◆	---	HYDRO/STREET LIGHT	---	▒	GUY WIRE ANCHOR	▒
⊡	CURB INLET	◆	---	MTS	---	▒	WOOD FENCE	▒
⊕	HYDRO POLE	◆	---	CURB RENEWAL	---	▒	CONCRETE FENCE	▒
⊙	LIGHT STANDARD	◆	---	PROPERTY LINE	---	▒	LEGEND - PLAN	▒
⊕	TRAFFIC SIGNAL POLE	◆	---	RAMP CURB	---	▒	WEST GUTTER	▒
⊕	SURVEY BAR	◆	---	ELEVATIONS	(231.000)	▒	CENTER LINE	▒
⊕	TEST HOLE	◆	---	TREE	---	▒	EAST GUTTER	▒
⊕	EXISTING	---	---	LEGEND - PLAN	---	---	LEGEND - PROFILE	---
⊕	PROPOSED	---	---	LEGEND - PLAN	---	---	PROPOSED	---

LOCATION APPROVED
UNDERGROUND STRUCTURES

SUPR. U/G STRUCTURES COMMITTEE DATE

NOTE:
LOCATION OF UNDERGROUND STRUCTURES AS SHOWN ARE BASED ON THE BEST INFORMATION AVAILABLE, BUT NO GUARANTEE IS GIVEN THAT ALL EXISTING UTILITIES ARE SHOWN OR THAT THE GIVEN LOCATIONS ARE EXACT. CONFIRMATION OF EXISTENCE AND EXACT LOCATION OF ALL SERVICES MUST BE OBTAINED FROM THE INDIVIDUAL UTILITIES BEFORE PROCEEDING WITH CONSTRUCTION.

NO.	REVISIONS	DATE	BY
1.	SUBMIT FOR PLAN APPROVAL	15/02/18	C.W.

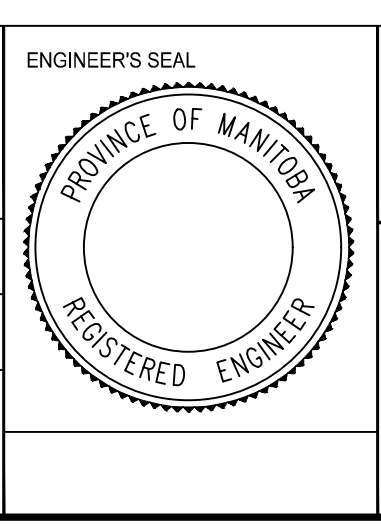
B.M. ELEV. 231.849

I.B. @ NE CORNER OF 979 FIFE STREET

ENGINEERING DIVISION
TECHNOLOGY SERVICES BRANCH
106 - 1155 PACIFIC AVE

DESIGNED BY	C.W.	CHECKED BY	C.H.
DRAWN BY	C.W.	APPROVED BY	

HOR. SCALE: 1 : 250
VERTICAL: 1 : 10
DATE: 2018/02/27



THE CITY OF WINNIPEG
PUBLIC WORKS DEPARTMENT

FIFE STREET
FROM COLLEGE AVE TO BURROWS AVE
ASPHALT RECONSTRUCTION AND ASSOCIATED WORKS
FROM STA. 0+109.61 TO STA. 0+200

CITY DRAWING NUMBER
SE-18-20
SHEET 15 OF 33

1