

ALL WATER SERVICES WITHIN THE LIMITS OF THE RECONSTRUCTION SHALL BE INSULATED AS PER SPECIFICATION E-10

PLAN :

- CONSTRUCTION NOTES**
- REMOVE EXISTING CURB AND CONSTRUCT NEW CONCRETE CURB AND GUTTER (SD-200)
  - REMOVE AND CONSTRUCT NEW 100mm CONCRETE SIDEWALK (SD-228A)
  - REMOVE EXISTING PAVEMENT AND CONSTRUCT NEW 100mm ASPHALT PAVEMENT
  - REMOVE EXISTING APPROACH AND CONSTRUCT NEW 150mm REINFORCED CONCRETE APPROACH (SD-232)
  - ABANDON EXISTING CATCH BASIN AS PER CW 2130
  - INSTALL NEW 1800 CATCHBASIN WITH CURB & GUTTER INLET (SD-024) CONNECT TO EXISTING COMBINED SEWER AS PER CW 2130
  - RECONSTRUCT 150mm REINFORCED CONCRETE PAVEMENT AND CAP WITH 50mm ASPHALT OVERLAY
  - INSTALL 15m SUBDRAINS (SD-245) CONNECT TO CATCHBASIN AND CAP ENDS AS PER CW 3120
  - METAL FENCE WITH CONCRETE BASE
- GENERAL NOTES**
- PAVEMENT DIMENSIONS ARE TO BACK OF CURB
  - ALL CURB RADII UNDER 15.0m SHALL BE MODIFIED
  - ADD 200.000m TO ALL DESIGN ELEVATION TO OBTAIN GEODETIC ELEVATIONS
  - CURB REPLACEMENT AS DIRECTED BY CONTRACT ADMINISTRATOR
  - INSTALL DETECTABLE WARNING SURFACE TILES AT CURB RAMPS AS PER CW3326
  - 
  -

**PRELIMINARY**  
NOT TO BE USED FOR CONSTRUCTION

**METRIC**  
WHOLE NUMBERS INDICATE MILLIMETERS  
DECIMALIZED NUMBERS INDICATE METERS

**BID OPPORTUNITY NO. 1-2018**

HYDRANT	LD5/WWS	CONCRETE	LOCATION APPROVED
VALVE	WATERMAIN	CONCRETE SIDEWALK	UNDERGROUND STRUCTURES
CURB STOP	GAS	ASPHALT	
MANHOLE	TRAFFIC SIGNALS	WOOD FENCE	
CATCH BASIN	HYDRO/STREET LIGHT	METAL FENCE	
CURB INLET	MTS	GUY WIRE ANCHOR	
HYDRO POLE	CURB RENEWAL		
LIGHT STANDARD	PROPERTY LINE		
TRAFFIC SIGNAL POLE	RAMP CURB		
SURVEY BAR	ELEVATIONS		
TEST HOLE	TREE		
EXISTING	LEGEND - PLAN	PROPOSED	EXISTING
	LEGEND - PLAN	PROPOSED	EXISTING
	LEGEND - PROFILE	PROPOSED	EXISTING

LOCATION APPROVED UNDERGROUND STRUCTURES

DATE

NOTE:  
LOCATION OF UNDERGROUND STRUCTURES AS SHOWN ARE BASED ON THE BEST INFORMATION AVAILABLE, BUT NO GUARANTEE IS GIVEN THAT ALL EXISTING UTILITIES ARE SHOWN OR THAT THE GIVEN LOCATIONS ARE EXACT. CONFIRMATION OF EXISTENCE AND EXACT LOCATION OF ALL SERVICES MUST BE OBTAINED FROM THE INDIVIDUAL UTILITIES BEFORE PROCEEDING WITH CONSTRUCTION.

B.M. IB @ NE CORNER 256 CHAMBERS ST  
ELEV. 232.002

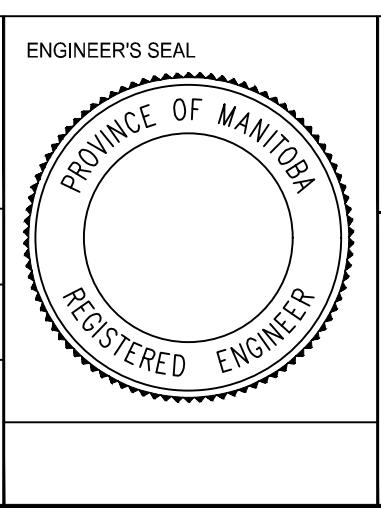
ENGINEERING DIVISION  
TECHNOLOGY SERVICES BRANCH  
106 - 1155 PACIFIC AVE

DESIGNED BY C.W.  
CHECKED BY C.H.

DRAWN BY C.W.  
APPROVED BY

HOR. SCALE: 1 : 250  
VERTICAL: 1 : 10

DATE 2018/02/26



**THE CITY OF WINNIPEG**  
PUBLIC WORKS DEPARTMENT

**CHAMBERS ST**  
FROM LOGAN AVE TO ALEXANDER AVE  
ASPHALT RECONSTRUCTION AND ASSOCIATED WORKS  
FROM STA. 1+04.9 TO STA. 2+10.5

CITY DRAWING NUMBER SE-18-19  
SHEET 14 OF 33

1