

- CONSTRUCTION NOTES**
1. ABANDON EXISTING CATCH PIT AND INSTALL NEW 1200 CATCHBASIN WITH CURB & GUTTER INLET (SD-024) CONNECT TO EXISTING CB LEAD AS PER CW 2130
 2. ABANDON EXISTING CATCH BASIN AS PER CW 2130
 3. REMOVE EXISTING CONCRETE AND CONSTRUCT NEW 150mm REINFORCED CONCRETE APPROACH (SD-232)
 4. ASPHALT OVERLAY
 5. REMOVE EXISTING CURB AND CONSTRUCT NEW BARRIER CURB (SD-205)
 6. REMOVE EXISTING AND CONSTRUCT NEW 100mm CONCRETE SIDEWALK (SD-228A)
 7. INSTALL NEW CATCH PIT WITH CURB AND GUTTER INLET FRAME (SD-023), AND CONNECT TO CATCH BASIN WITH 250mm PVC PIPE AS PER CW 2130
 8. MILL EXISTING ASPHALT
 9. INSTALL NEW FRAME AND SOLID COVER (AP-006, AP-007)
- GENERAL NOTES**
- A. PAVEMENT DIMENSIONS ARE TO BACK OF CURB
 - B. ALL CURB RADII UNDER 15.0m SHALL BE MODIFIED
 - C. ADD 200.000m TO ALL DESIGN ELEVATION TO OBTAIN GEODETIC ELEVATIONS
 - D. CURB REPLACEMENT AS DIRECTED BY CONTRACT ADMINISTRATOR
 - E. INSTALL DETECTABLE WARNING SURFACE TILES AT CURB RAMPS AS PER CW3326
 - F. ASPHALT TIE-INS ON APPROACHES TO BE DETERMINED IN THE FIELD BY THE CONTRACT ADMINISTRATOR

PRELIMINARY
NOT TO BE USED FOR
CONSTRUCTION

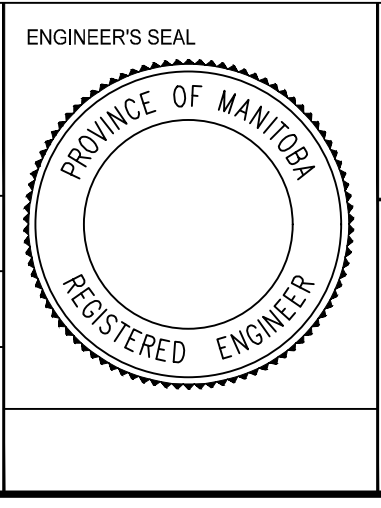
METRIC
WHOLE NUMBERS INDICATE MILLIMETERS
DECIMALIZED NUMBERS INDICATE METERS

BID OPPORTUNITY NO. 1-2018

+	HYDRANT	◆	LDS/WWS	---	CONCRETE	[Pattern]
⊗	VALVE	●	WATERMAIN	---	CONCRETE SIDEWALK	[Pattern]
□	CURB STOP	●	GAS	---	ASPHALT	[Pattern]
○	MANHOLE	●	TRAFFIC SIGNALS	---	PARTIAL DEPTH REPAIR	[Pattern]
□	CATCH BASIN	■	HYDRO/STREET LIGHT	[Symbol]	UTILITY MAN HOLE	[Symbol]
△	CURB INLET	▲	MTS	---	UTILITY BOX	[Symbol]
○	HYDRO POLE	◆	CURB RENEWAL	---	LEGEND - PLAN	PROPOSED
○	LIGHT STANDARD	◆	PROPERTY LINE	---	NORTH GUTTER	---
+	TRAFFIC SIGNAL POLE	◆	RAMP CURB	---	CENTER LINE	---
+	SURVEY BAR	◆	ELEVATIONS	(31.000)	SOUTH GUTTER	---
+	GEODETIC BENCH MARK	◆	TREE	[Symbol]		
+	EXISTING	---	LEGEND - PLAN	PROPOSED	EXISTING	---
+		---	LEGEND - PROFILE	PROPOSED	EXISTING	---

<p>LOCATION APPROVED</p> <p>UNDERGROUND STRUCTURES</p> <p>DATE</p> <p>NOTE: LOCATION OF UNDERGROUND STRUCTURES AS SHOWN ARE BASED ON THE BEST INFORMATION AVAILABLE. BUT NO GUARANTEE IS GIVEN THAT ALL EXISTING UTILITIES ARE SHOWN OR THAT THE GIVEN LOCATIONS ARE EXACT. CONFIRMATION OF EXISTENCE AND EXACT LOCATION OF ALL SERVICES MUST BE OBTAINED FROM THE INDIVIDUAL UTILITIES BEFORE PROCEEDING WITH CONSTRUCTION.</p>	<p>B.M. ELEV. IB @ NW CORNER 2 CAIL BAY 231.765</p> <table border="1" style="width: 100%; border-collapse: collapse;"> <tr> <td>NO.</td> <td>REVISIONS</td> <td>DATE</td> <td>BY</td> </tr> <tr> <td>1.</td> <td>SUBMIT FOR PLAN APPROVAL</td> <td>15/02/18</td> <td>C.W.</td> </tr> </table>	NO.	REVISIONS	DATE	BY	1.	SUBMIT FOR PLAN APPROVAL	15/02/18	C.W.
NO.	REVISIONS	DATE	BY						
1.	SUBMIT FOR PLAN APPROVAL	15/02/18	C.W.						

ENGINEERING DIVISION TECHNOLOGY SERVICES BRANCH 106 - 1155 PACIFIC AVE	
DESIGNED BY C.W. & E.H.	CHECKED BY E.H.
DRAWN BY C.W.	APPROVED BY
HOR. SCALE: 1 : 250 VERTICAL: 1 : 10 DATE: 2018/02/26	



THE CITY OF WINNIPEG
PUBLIC WORKS DEPARTMENT

CAIL BAY
FROM JEFFERSON AVE TO JEFFERSON AVE
ASPHALT OVERLAY AND ASSOCIATED WORKS
FROM STA. 3+11.1 TO STA. 4+29

CITY DRAWING NUMBER
SE-18-17
SHEET 12 OF 33

3