

CONSTRUCTION NOTES

1. INSTALL NEW 1800 CATCHBASIN WITH CURB & GUTTER INLET (SD-024) CONNECT TO EXISTING CB LEAD AS PER CW 2130
2. REMOVE EXISTING CURB AND CONSTRUCT NEW BARRIER CURB (SD-205)
3. REMOVE EXISTING AND CONSTRUCT NEW 100mm CONCRETE SIDEWALK (SD-228A)
4. REMOVE CURB INLET AND INSTALL CATCH PIT WITH CURB & GUTTER INLET (SD-023) CONNECT DRAINAGE PIPE TO EXISTING CATCH BASIN AS PER CW 2130
5. MILL EXISTING ASPHALT OVERLAY AND CONSTRUCT NEW
6. INSTALL NEW FRAME & SOLID COVER (AP-004, AP-005)
7. INSTALL NEW 1800 CATCHBASIN WITH CURB & GUTTER INLET (SD-024) CONNECT TO 375 COMBINED SEWER WITH 250mm PVC PIPE AS PER CW 2130
8. ABANDON EXISTING CATCHBASIN AS PER CW 2130

GENERAL NOTES

- A. PAVEMENT DIMENSIONS ARE TO BACK OF CURB
- B. ALL CURB RADII UNDER 15.0m SHALL BE MODIFIED
- C. ADD 200.00mm TO ALL DESIGN ELEVATION TO OBTAIN GEODETIC ELEVATIONS
- D. CURB REPLACEMENT AS DIRECTED BY CONTRACT ADMINISTRATOR
- E. PAVEMENT REPAIRS SHOWN ARE ONLY A REPRESENTATIVE SAMPLE OF THE TENDERED QUANTITIES
- F. ASPHALT TIE-INS ON APPROACHES TO BE DETERMINED IN THE FIELD BY THE CONTRACT ADMINISTRATOR
- G. INSTALL DETECTIBLE WARNING SURFACE TILES AT CURB RAMPS AS PER CW 3326

PRELIMINARY
NOT TO BE USED FOR
CONSTRUCTION

METRIC

WHOLE NUMBERS INDICATE MILLIMETERS
DECIMALIZED NUMBERS INDICATE METERS

BID OPPORTUNITY NO. 1-2018

⊕	HYDRANT	⊕	---	LDS/WWS	---	---	CONCRETE	---
⊕	VALVE	⊕	---	WATERMAIN	---	---	CONCRETE SIDEWALK	---
⊕	CURB STOP	⊕	---	GAS	---	---	ASPHALT	---
⊕	MANHOLE	⊕	---	TRAFFIC SIGNALS	---	---		---
⊕	CATCH BASIN	⊕	---	HYDRO/STREET LIGHT	---	EXISTING	LEGEND - PLAN	PROPOSED
⊕	CURB INLET	⊕	---	MTS	---	---		---
⊕	HYDRO POLE	⊕	---	CURB RENEWAL	---	---	NORTH GUTTER	---
⊕	LIGHT STANDARD	⊕	---	PROPERTY LINE	---	---	CENTER LINE	---
⊕	TRAFFIC SIGNAL POLE	⊕	---	RAMP CURB	---	---	SOUTH GUTTER	---
⊕	SURVEY BAR	⊕	---	ELEVATIONS	---	---	NORTH SIDEWALK	---
⊕	TEST HOLE	⊕	---	TREE	---	---	SOUTH SIDEWALK	---
---	EXISTING	---	---	LEGEND - PLAN	---	---	LEGEND - PROFILE	---
---	LEGEND - PLAN	---	---	PROPOSED	---	---	PROPOSED	---

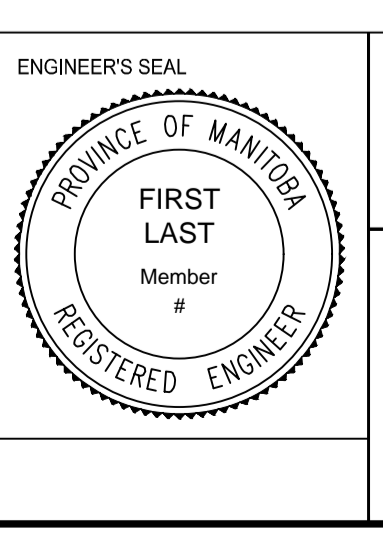
LOCATION APPROVED
UNDERGROUND STRUCTURES

SUPR. U/G STRUCTURES COMMITTEE DATE

NOTE:
LOCATION OF UNDERGROUND STRUCTURES AS SHOWN ARE BASED ON THE BEST INFORMATION AVAILABLE. BUT NO GUARANTEE IS GIVEN THAT ALL EXISTING UTILITIES ARE SHOWN OR THAT THE GIVEN LOCATIONS ARE EXACT. CONFIRMATION OF EXISTENCE AND EXACT LOCATION OF ALL SERVICES MUST BE OBTAINED FROM THE INDIVIDUAL UTILITIES BEFORE PROCEEDING WITH CONSTRUCTION.

B.M. ELEV.	1.B. AT S.W. CORNER OF 887 BANNERMAN AVE	232.853
1.	SUBMIT FOR PLAN APPROVAL	18/02/18 T.K.
NO.	REVISIONS	DATE BY

ENGINEERING DIVISION TECHNOLOGY SERVICES BRANCH 106 - 1155 PACIFIC AVE	
DESIGNED BY C.W., T.K.	CHECKED BY E.H.
DRAWN BY C.W.	APPROVED BY
HOR. SCALE: 1 : 250	VERTICAL: 1 : 10
DATE: 2018/02/27	



THE CITY OF WINNIPEG
PUBLIC WORKS DEPARTMENT

BANNERMAN AVENUE
FROM McPHILLIPS ST TO AIRLIES ST
ASPHALT OVERLAY AND ASSOCIATED WORKS
FROM STA. 1+03 TO STA. 2+30

CITY DRAWING NUMBER
SE-18-10
SHEET 5 OF 33
1