

CONSTRUCTION NOTES

1. MILL EXISTING ASPHALT PAVEMENT
2. LIMIT OF ASPHALT OVERLAY
3. REMOVE EXISTING AND CONSTRUCT NEW 100mm CONCRETE SIDEWALK (SD-228A)
4. REMOVE EXISTING CONCRETE AND CONSTRUCT NEW 150mm REINFORCED CONCRETE APPROACH (SD-232)
5. INSTALL NEW FRAME & SOLID COVER (AP-006, 007)
6. INSTALL NEW CURB AND GUTTER INLET FRAME & COVER (AP-011, 012)
7. INSTALL NEW 1800 CATCH BASIN WITH ROUND FRAME & SOLID COVER (AP-006, 007) CONNECT TO EXISTING CB LEAD AS PER CW 2130
8. REMOVE EXISTING CURB AND CONSTRUCT NEW BARRIER CURB (SD-205)
9. REMOVE AND REPLACE MODIFIED BARRIER CURB (SD-203B)
10. INSTALL NEW CATCH PIT WITH CURB AND GUTTER INLET FRAME (SD-023), AND CONNECT TO CATCH BASIN AS PER CW 2130
11. CONSTRUCT ASPHALT OVERLAY
12. ABANDON EXISTING CATCH BASIN AS PER CW 2130
13. ABANDON EXISTING CATCH PIT AS PER CW 2130
14. REPLACE EXISTING CATCH PIT (SD-023) AND CONNECT TO PROPOSED CATCH BASIN AS PER CW 2130

GENERAL NOTES

- A. PAVEMENT DIMENSIONS ARE TO BACK OF CURB
- B. ALL CURB RADII UNDER 15.0m SHALL BE MODIFIED
- C. ADD 200.000mm TO ALL DESIGN ELEVATION TO OBTAIN GEODETIC ELEVATIONS
- D. CURB REPLACEMENT AS DIRECTED BY CONTRACT ADMINISTRATOR
- E. PAVEMENT REPAIRS SHOWN ARE ONLY A REPRESENTATIVE SAMPLE OF THE TENDERED QUANTITIES
- F. ASPHALT TIE-INS ON APPROACHES TO BE DETERMINED IN THE FIELD BY THE CONTRACT ADMINISTRATOR
- G. INSTALL DETECTABLE WARNING SURFACE TILES AT CURB RAMPS AS PER CW3326
- H.
- I.

PRELIMINARY
NOT TO BE USED FOR
CONSTRUCTION

METRIC

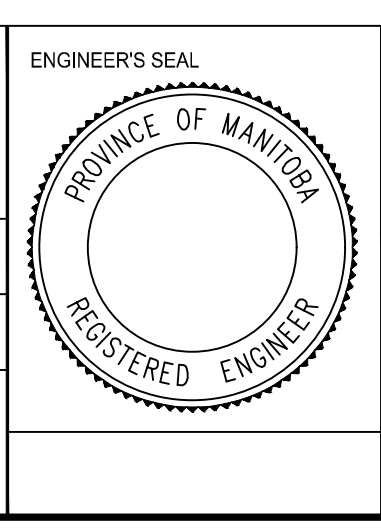
WHOLE NUMBERS INDICATE MILLIMETERS
DECIMALIZED NUMBERS INDICATE METERS

BID OPPORTUNITY NO. 1-2018

⊕	HYDRANT	◆	---	LDS/WWS	---	CONCRETE	▨	LOCATION APPROVED	B.M. ELEV. IB @ NE CORNER 102 ANGES ARNOLD PL 231.771
⊗	VALVE	●	---	WATERMAIN	---	PARTIAL DEPTH CONCRETE SIDEWALK	▨	UNDERGROUND STRUCTURES	
⊙	CURB STOP	●	---	GAS	---	ASPHALT	▨		
○	MANHOLE	●	---	TRAFFIC SIGNALS	---	BRICK	▨		
□	CATCH BASIN	■	---	HYDRO/STREET LIGHT	---	LEGEND - PLAN	▨		
△	CURB INLET	▲	---	MTS	---	NORTH GUTTER	---		
⊖	HYDRO POLE	●	---	CURB RENEWAL	---	CENTER LINE	---		
⊙	LIGHT STANDARD	●	---	PROPERTY LINE	---	SOUTH GUTTER	---		
⊕	TRAFFIC SIGNAL POLE	●	---	RAMP CURB	---	NORTH SIDEWALK	---		
⊕	SURVEY BAR	◆	---	ELEVATIONS (31.000)	---	SOUTH SIDEWALK	---		
⊕	GEODETIC BENCH MARK	◆	---	TREE	---	---	---		
⊕	EXISTING	---	---	EXISTING	---	---	---		
⊕	LEGEND - PLAN	---	---	LEGEND - PLAN	---	---	---		
⊕	PROPOSED	---	---	PROPOSED	---	---	---		
⊕	EXISTING	---	---	EXISTING	---	---	---		
⊕	LEGEND - PROFILE	---	---	LEGEND - PROFILE	---	---	---		
⊕	PROPOSED	---	---	PROPOSED	---	---	---		

SUPR. LIG. STRUCTURES COMMITTEE		DATE
NOTE: LOCATION OF UNDERGROUND STRUCTURES AS SHOWN ARE BASED ON THE BEST INFORMATION AVAILABLE, BUT NO GUARANTEE IS GIVEN THAT ALL EXISTING UTILITIES ARE SHOWN OR THAT THE GIVEN LOCATIONS ARE EXACT. CONFIRMATION OF EXISTENCE AND EXACT LOCATION OF ALL SERVICES MUST BE OBTAINED FROM THE INDIVIDUAL UTILITIES BEFORE PROCEEDING WITH CONSTRUCTION.		
2.	SUBMIT FOR ENGINEERS REVIEW	18/02/22 A.T.
1.	SUBMIT FOR PLAN APPROVAL	18/02/14 A.T.
NO.	REVISIONS	DATE BY

ENGINEERING DIVISION TECHNOLOGY SERVICES BRANCH 106 - 1155 PACIFIC AVE	
DESIGNED BY	A.T.
CHECKED BY	E.H.
DRAWN BY	A.T.
APPROVED BY	
HOR. SCALE:	1 : 250
VERTICAL:	1 : 10
DATE	2018/02/27



THE CITY OF WINNIPEG
PUBLIC WORKS DEPARTMENT

AGNES ARNOLD PL
FROM ROBERTS CRES TO LEILA AVE
ASPHALT OVERLAY AND ASSOCIATED WORKS
FROM STA. 3+40 TO STA. 4+50

CITY DRAWING NUMBER SE-18-08
SHEET 3 OF 33

3