

ELECTRICAL SYMBOL LEGEND

NOTE:
NOT ALL SYMBOLS SHOWN ON THIS LEGEND ARE NECESSARILY USED ON THIS PROJECT.

LIGHTING	
	LINEAR FLUORESCENT LUMINAIRE, TYPE 'A' AS SPECIFIED. HATCHING DENOTES CONNECTED TO EMERGENCY/NIGHT LIGHTING CIRCUIT
	CEILING MOUNTED LUMINAIRE, TYPE 'A' AS SPECIFIED
	WALL MOUNTED LUMINAIRE, TYPE 'A' AS SPECIFIED
	DOUBLE SURFACE MOUNTED EMERGENCY LIGHTING REMOTE HEADS, TYPE 'BU-1' INDICATES BATTERY BANK FED FROM
	EMERGENCY LIGHTING BATTERY UNIT C/W DUPLEX RECEPTACLE AND DOUBLE REMOTE HEADS, TYPE 'BU-1' AS SPECIFIED.
	WALL MOUNTED DOUBLE FACED EXIT LIGHT AND DIRECTIONAL ARROWS AS INDICATED. SHADED AREAS DENOTE DIRECTION OF FACE OF EXIT SIGN. 'BU-1' INDICATES BATTERY UNIT FED FROM.
	WALL MOUNTED SINGLE FACED EXIT LIGHT AND DIRECTIONAL ARROWS AS INDICATED. SHADED AREAS DENOTE DIRECTION OF FACE OF EXIT SIGN.
	CEILING MOUNTED SINGLE FACED EXIT LIGHT AND DIRECTIONAL ARROWS AS INDICATED. SHADED AREAS DENOTE DIRECTION OF FACE OF EXIT SIGN.
	COMBINATION CEILING MOUNTED SINGLE FACED EXIT LIGHT, DIRECTIONAL ARROWS & DOUBLE REMOTE HEAD AS INDICATED. SHADED AREAS DENOTE DIRECTION OF FACE OF EXIT SIGN.
EQUIPMENT CONNECTIONS AND CONTROLS	
	MOTORIZED DAMPER
	DIRECT CONNECTION - 120 OR 208V AS SPECIFIED
	MOTOR CONNECTION C/W UNFUSED DISCONNECT SWITCH
	POWER ACTIVATED DOOR EXIT BUTTON SUPPLIED BY DOOR HARDWARE SUPPLIER, WIRED BY ELECTRICAL
	RECESSED MOUNTED ELECTRICAL PANEL - 'SP' DENOTES PANEL DESIGNATION
	SURFACE MOUNTED ELECTRICAL PANEL - 'SP' DENOTES PANEL DESIGNATION
LIGHTING CONTROL	
	ONE, TWO AND THREE GANG SINGLE POLE TOGGLE SWITCHES
	SWITCH MOUNTED OCCUPANCY SENSOR, TYPE 'A' AS SPECIFIED
	CEILING MOUNTED OCCUPANCY SENSOR, TYPE 'A' AS SPECIFIED
	DIMMER SWITCH, TYPE 'A' AS SPECIFIED
SECURITY AND ACCESS SYSTEMS	
	MOTION DETECTING CAMERA
	DOOR CONTACT
	HOLD OPEN
	MOTION DETECTOR

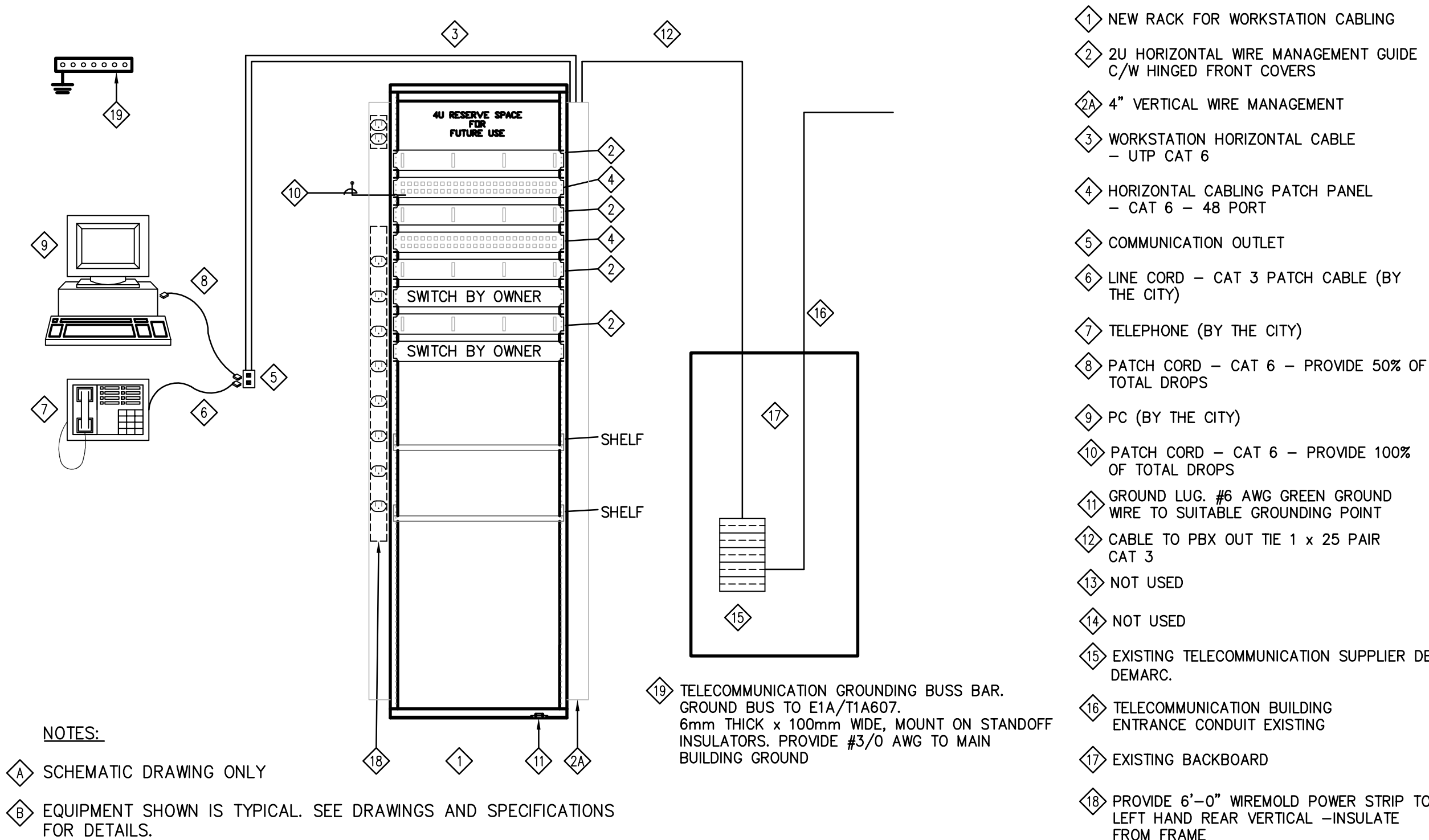
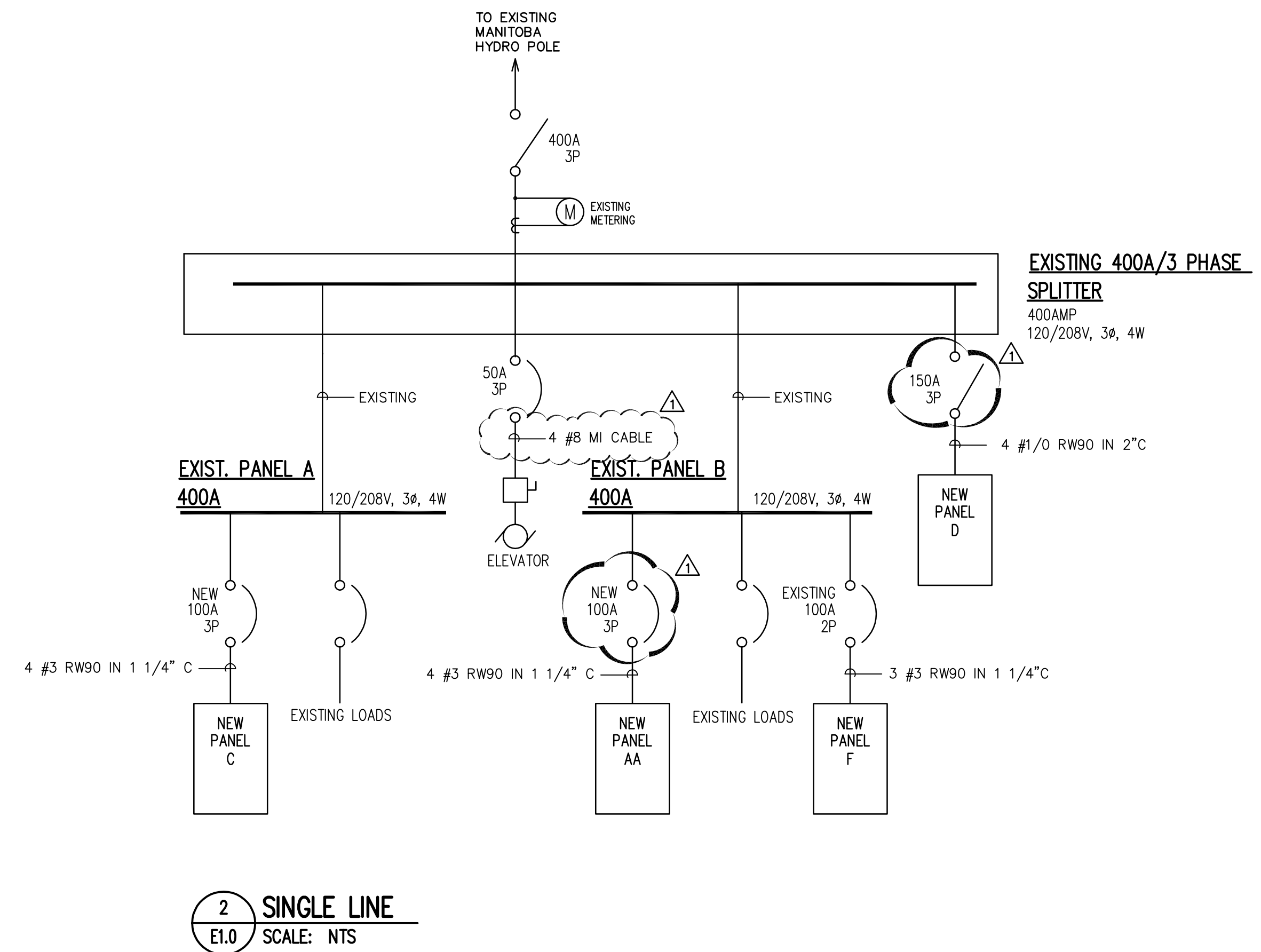
FIRE ALARM SYSTEM	
	PULL STATION
	HORN STROBE
	AUTOMATIC COMBINATION FIXED TEMPERATURE/RATE OF RISE HEAT DETECTOR - CEILING MOUNTED
	AUTOMATIC FIXED TEMPERATURE HEAT DETECTOR - CEILING MOUNTED
	SMOKE DETECTOR - CEILING MOUNTED
GENERAL POWER	
	15A, U-GROUND DUPLEX RECEPTACLE
	15A, U-GROUND DUPLEX RECEPTACLE C/W GROUND FAULT CIRCUIT INTERRUPTER - MOUNTED ABOVE COUNTER
	(5-20R) T-SLOT U-GROUND DUPLEX RECEPTACLE C/W GROUND FAULT CIRCUIT INTERRUPTER
	15A, U-GROUND DUPLEX RECEPTACLE - FLUSH FLOOR MOUNTED UNLESS NOTED OTHERWISE
MISCELLANEOUS	
	INDICATES EXISTING DEVICE TO REMAIN
	INDICATES EXISTING DEVICE TO BE MOVED
	INDICATES EXISTING DEVICE IN RELOCATED POSITION
	INDICATES EXISTING DEVICE TO BE DEMOLISHED
	INDICATES CONDUIT
	ELECTRICAL DRAWING NOTES
COMMUNICATIONS	
	COMBINATION VOICE/DATA OUTLET - WALL MOUNTED
	TELEPHONE OUTLET - FLUSH FLOOR MOUNTED
	DATA OUTLET - WALL MOUNTED
	DATA OUTLET - FLUSH CEILING MOUNTED UNLESS NOTED OTHERWISE
ELECTRIC HEATING	
	ELECTRIC FORCE FLOW HEATER, TYPE '4KW' AS SPECIFIED

ELECTRICAL DRAWING LIST

E1.0	ELECTRICAL SYMBOL LEGEND & DRAWING LIST
ED2.0	BASEMENT - ELECTRICAL DEMOLITION LAYOUT
ED2.1	MAIN FLOOR - ELECTRICAL DEMOLITION LAYOUT
EL2.0	BASEMENT - ELECTRICAL LIGHTING RENOVATION LAYOUT
EL2.1	MAIN FLOOR - ELECTRICAL LIGHTING RENOVATION LAYOUT
EP2.0	BASEMENT - ELECTRICAL POWER & SYSTEMS RENOVATION LAYOUT
EP2.1	MAIN FLOOR - ELECTRICAL POWER & SYSTEMS RENOVATION LAYOUT
E5.0	PANELBOARD SCHEDULES
ME1.1	ME SCHEDULES

ABBREVIATIONS

AFF	- ABOVE FINISHED FLOOR	MIC	- MICROWAVE
AFG	- ABOVE FINISHED GRADE	MV	- EXISTING TO BE MOVED
BB	- BASEBOARD HEATER	MW	- MOUNTED IN MILLWORK
BU	- BATTERY UNIT	NIC	- NOT IN CONTRACT
CH	- CHILDPROOF	NL	- NIGHT LIGHT
CP	- COPY MACHINE	NTS	- NOT TO SCALE
CSTE	- CUSTOMER SERVICE TERMINATION ENCLOSURE	PA	- PUBLIC ADDRESS
D	- DELETE	PR	- PRINTER
E	- EXISTING	QP	- QUAD PLEX
FA	- FIRE ALARM	R	- RELOCATE(D)
FC	- FAN COIL (WHEN USED WITH MOTOR SYMBOL)	RL	- REPLACE WITH NEW
FF	- FORCE FLOW	TYP	- TYPICAL
FR	- FRIDGE	UC	- UNDER COUNTER
FX	- FAX MACHINE	WG	- WIRE GUARD
MD	- MAIN DISTRIBUTION	WP	- WEATHERPROOF
MFC	- MULTI-FUNCTION COPIER	WTP	- WATERPROOF
NTS	- NOT TO SCALE	USB	- DUPLEX REC. C/W USB CHARGER



1 DATA RACK DETAIL
E1.0 SCALE: NTS