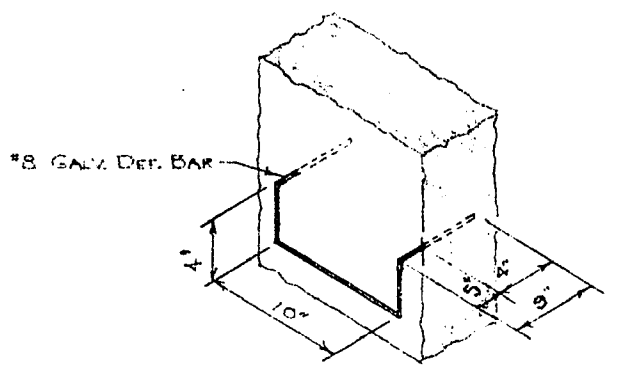
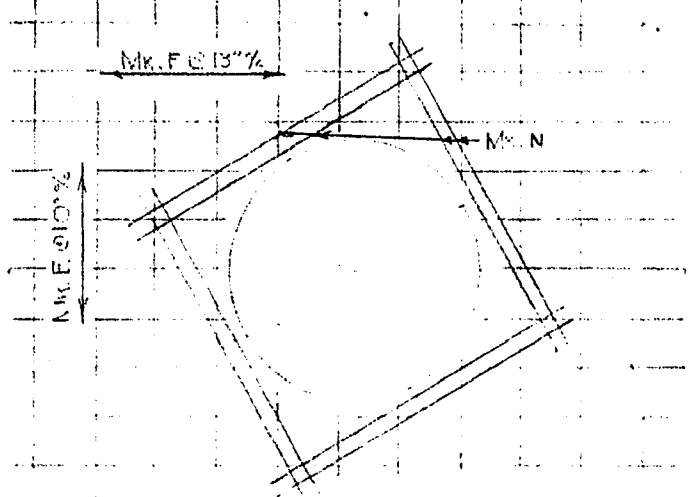


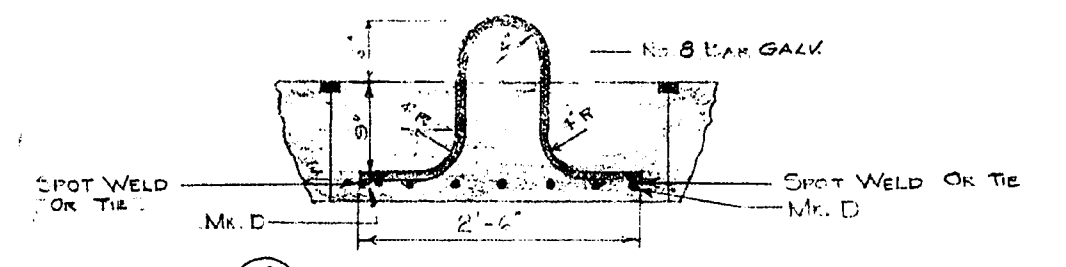
1  
27 TYPICAL VENTURI METER SUPPORT DETAIL  
N. T. S.



2  
27 MANHOLE STEP DETAIL  
N. T. S.



3  
27 END WALL SECTION  
SCALE 3/8" = 1'-0"



4  
27 LIFTING HOOK DETAILS  
SCALE - 3/4" = 1'-0"

MARK.	SIZE	LENGTH	CHARGE
ALL DIMENSIONS OF STEEL			
A	5	7'-4"	1'-7" 1'-0"
B	5	1'-2"	
C	6	12'-0"	
D	5	2'-8"	
E	5	11'-2"	
F	5	1'-4"	
G	5	4'-8"	
H	7	12'-2"	
J	5	3'-0"	
K	8	5'-2"	
L	4	1'-6"	
M	5	3'-4"	7"
N	8	5'-2"	1'-0" 1'-0"
O	5	5'-6"	2'-0" 2'-0"
P	5	7'-8"	
Q	7	7'-6"	3'-0" 3'-0"
R	7	10'-8"	8'-0" 3'-0"
S	7	3'-2"	1'-0"
T	6	7'-5"	1'-0" 1'-0"
U	5	7'-2"	
V	6	4'-0"	12" 12"

**NOTES**

- ALL CONC. TO HAVE 3000 P.S.I. COMPRESSIVE STRENGTH IN 28 DAYS.
- REIN. STEEL SHALL BE 20,000 P.S.I. YIELD POINT. REIN. SHALL BE IN ACCORDANCE WITH LATEST A.S.T.M. SPEC. WITH PERMISSIBLE DEVIATIONS TO A.S.T.M. A-305.
- LAP PINS A MIN. OF 17 DIAM. EXCEPT AS OTHERWISE SHOWN.
- CONC. COVERAGE  
COVER. OF 3" FOR BOT. FLOOR STEEL  
2" FOR ALL OUTSIDE STEEL  
EXCEPT BOT. FLOOR STEEL.  
1 1/2" FOR ALL INSIDE STEEL.

NO.	REF.	DESCRIPTION	DATE	CHKD.
REVISIONS (READ UP)				

DRAWN BY  
L.P.H.

CHECKED BY  
*[Signature]*

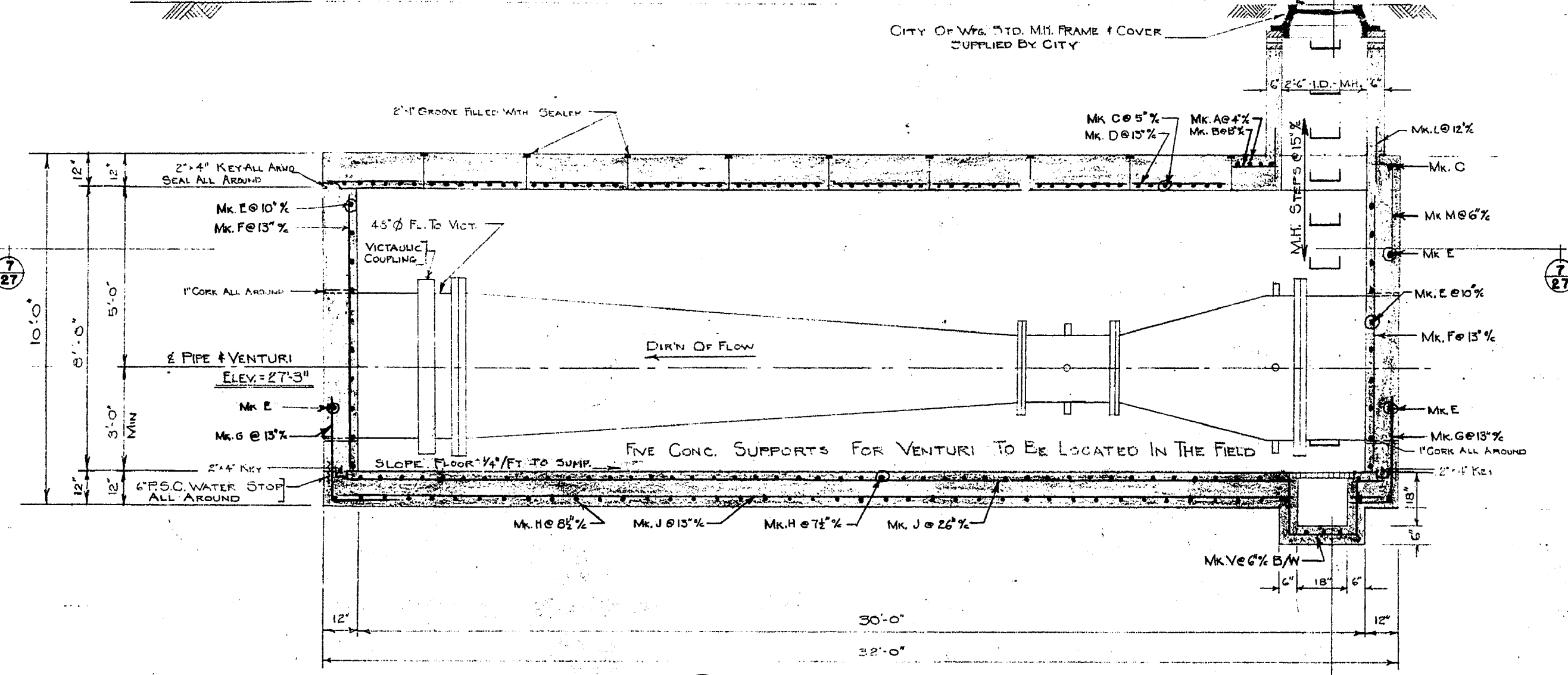
APPROVED BY  
*[Signature]*

DATE  
NOV. 10 1959

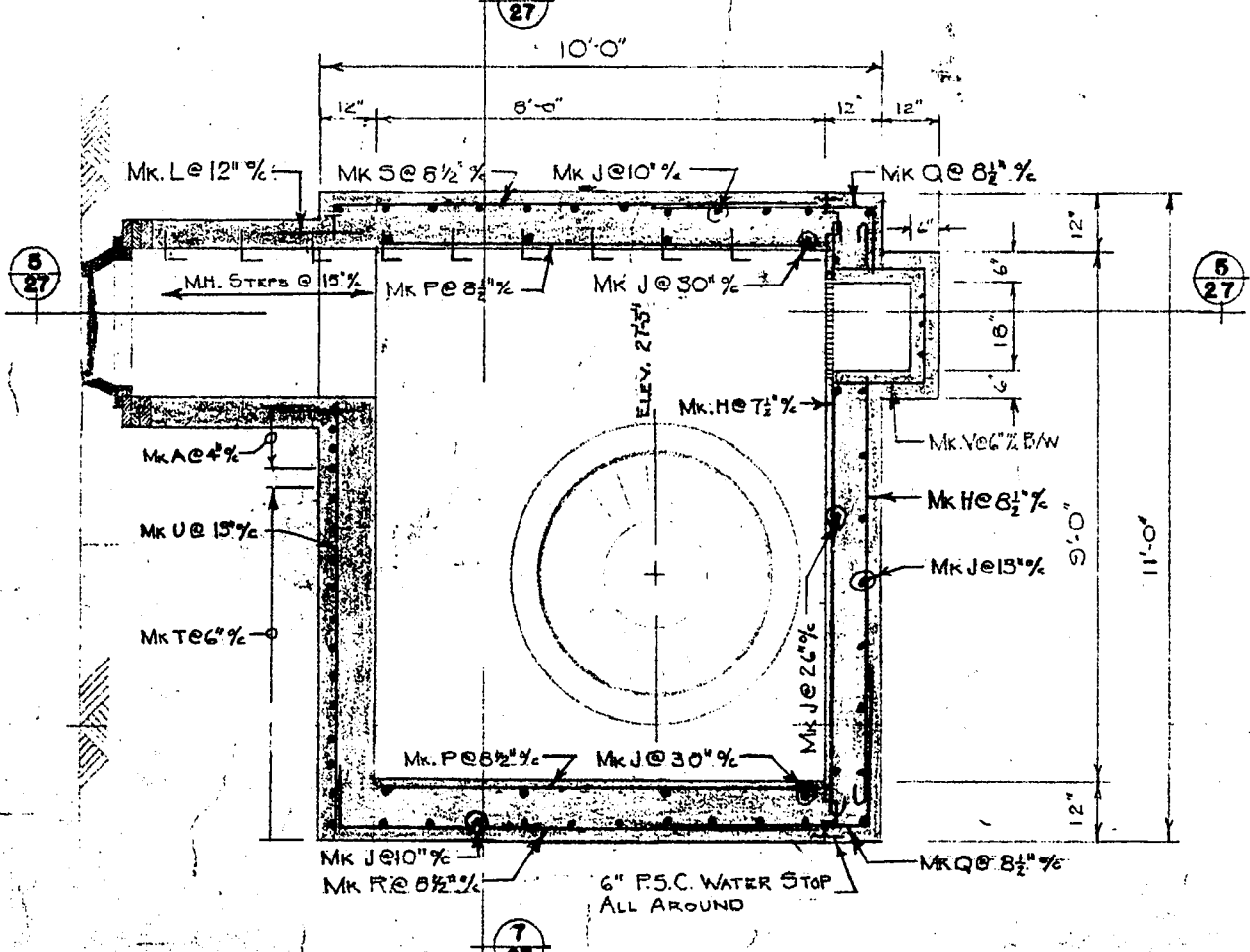
CITY FILE NO.  
WH 5622 - 27

SMITH CARTER SEARLE ASSOCIATES  
ARCHITECTS AND ENGINEERS  
WINNIPEG AND BRANDON  
CITY OF WINNIPEG  
WILKES AVE. PUMPING STATION  
WINNIPEG MANITOBA  
SHEET TITLE  
VENTURI METER PIT DET'S  
SCALE  
3/8" & 3/4" = 1'-0"  
FILE NUMBER 59151 SHEET NUMBER 27

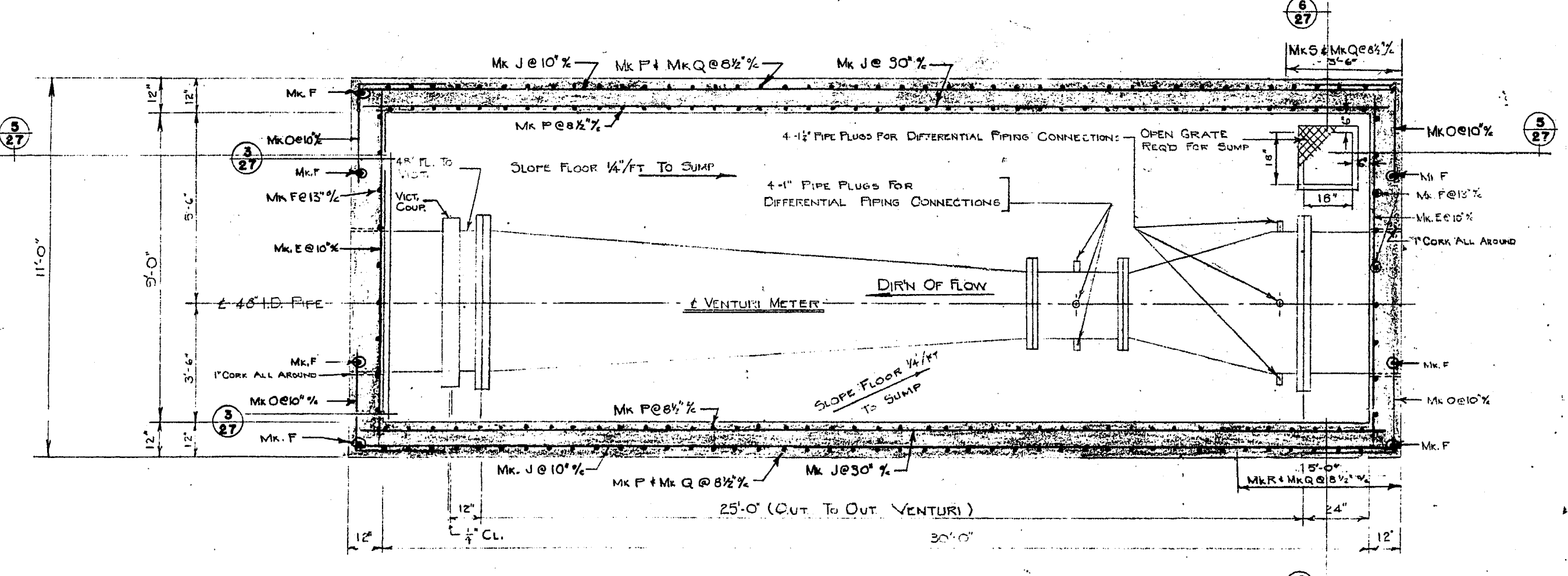
APPROX. GROUND ELEV. = 36'-6"



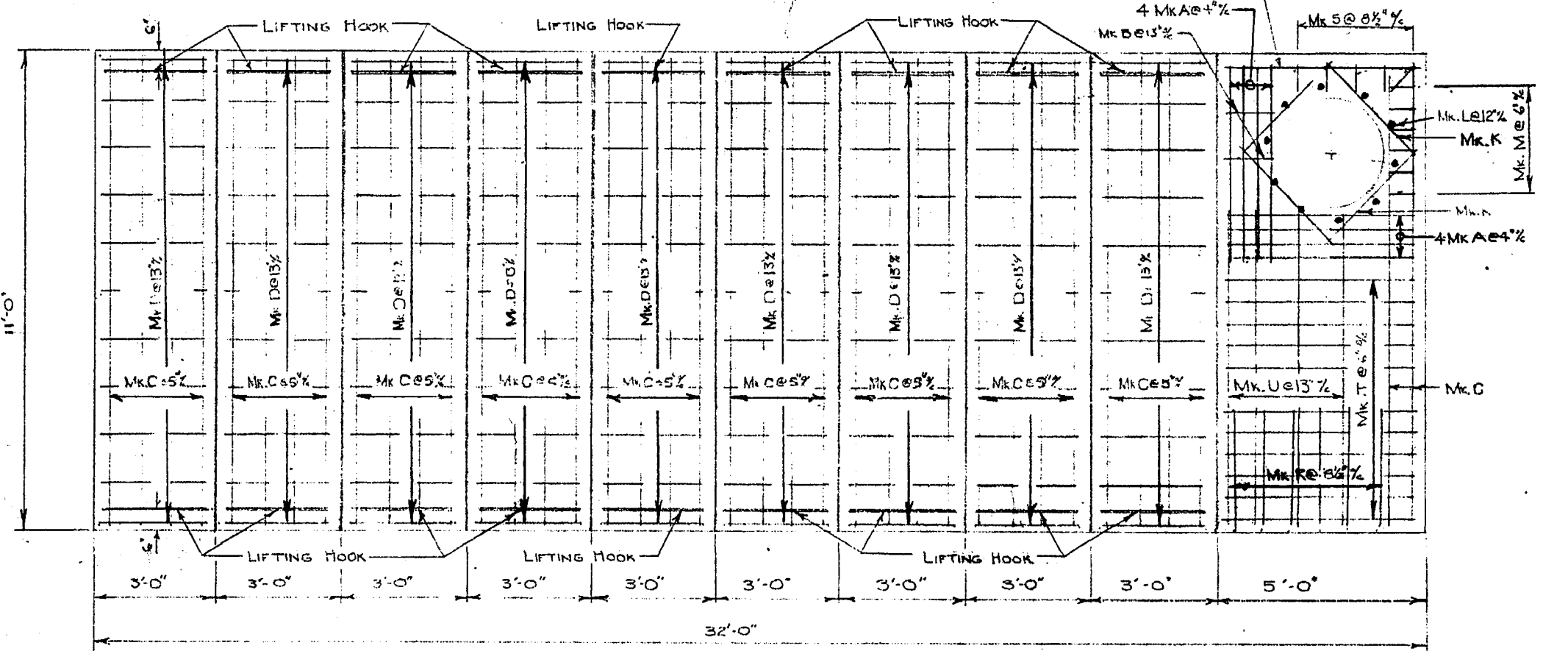
5  
27 SECTION



6  
27 SECTION



7  
27 PLAN SECTION



8  
27 PLAN OF CONCRETE TOP

**NOTE:** THIS DWG. SHOWS DETAILS FOR PIT B. PIT A IS THE SAME BUT THE VENTURI METER ARE LOCATED ON OPPOSITE SIDE.