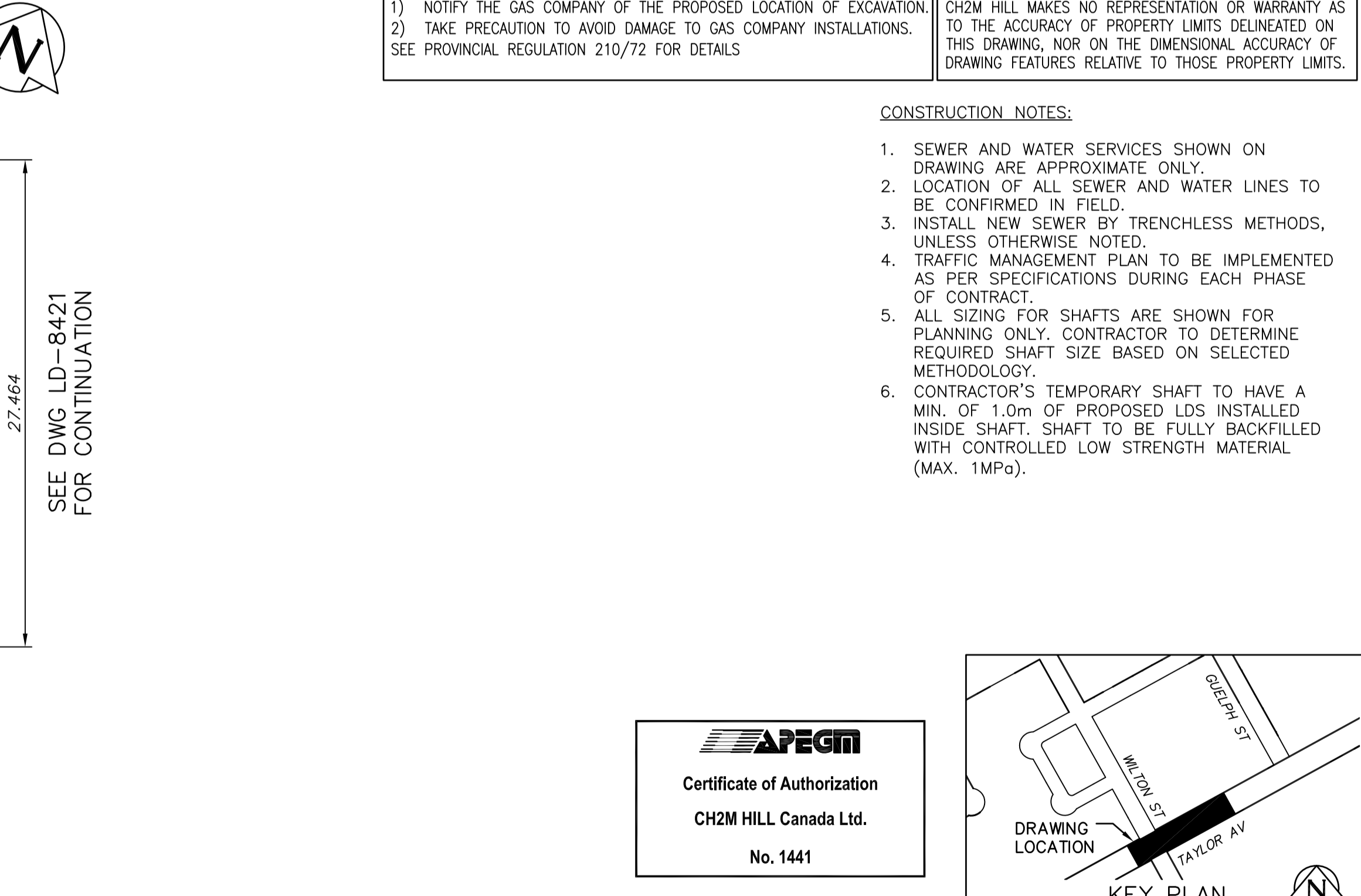
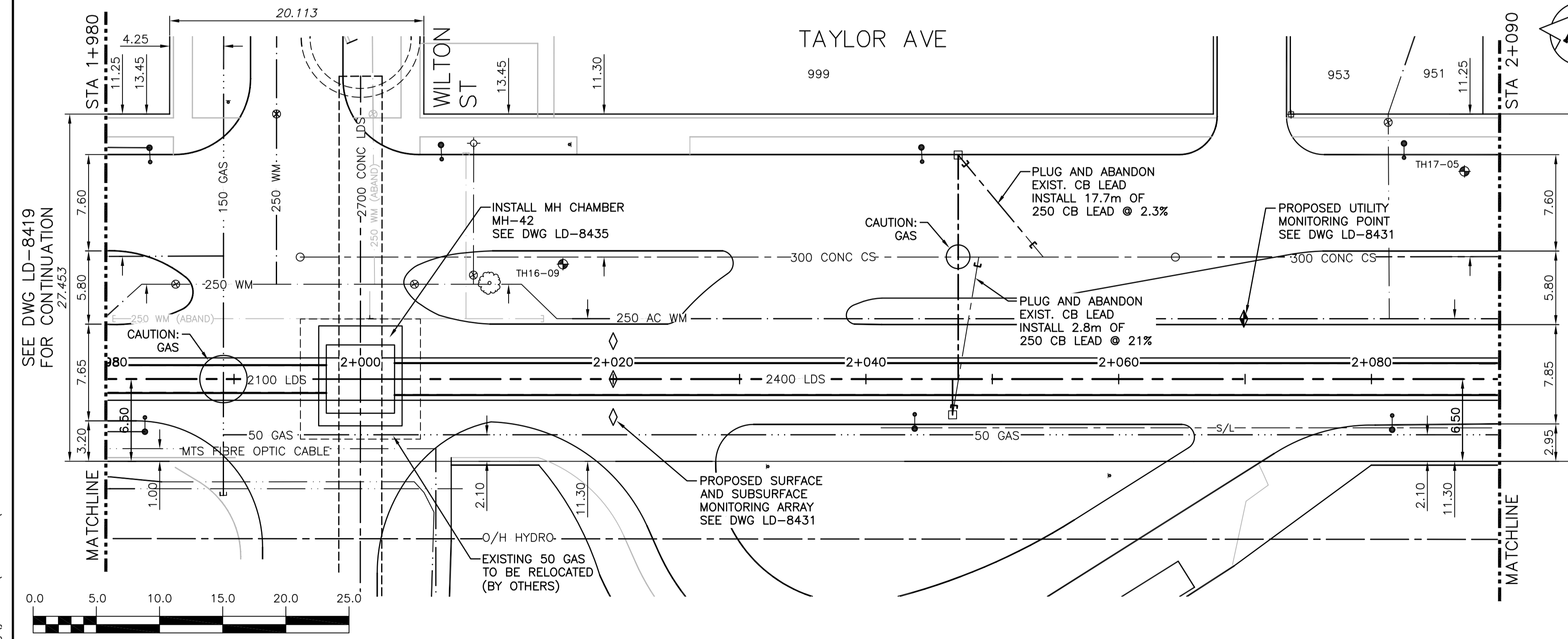


**WARNING**  
 IF POWER EQUIPMENT OR EXPLOSIVES ARE TO BE USED FOR EXCAVATION ON THIS PROJECT THE CONTRACTOR MUST:  
 1) NOTIFY THE GAS COMPANY OF THE PROPOSED LOCATION OF EXCAVATION.  
 2) TAKE PRECAUTION TO AVOID DAMAGE TO GAS COMPANY INSTALLATIONS.  
 SEE PROVINCIAL REGULATION 210/72 FOR DETAILS

**PROPERTY LIMITS DELINEATION**  
 DELINEATION OF PROPERTY LIMITS AS SHOWN ON THIS DRAWING DOES NOT REPRESENT A "LEGAL SURVEY". CH2M HILL MAKES NO REPRESENTATION OR WARRANTY AS TO THE ACCURACY OF PROPERTY LIMITS DELINEATED ON THIS DRAWING, NOR ON THE DIMENSIONAL ACCURACY OF DRAWING FEATURES RELATIVE TO THOSE PROPERTY LIMITS.



- CONSTRUCTION NOTES:**
- SEWER AND WATER SERVICES SHOWN ON DRAWING ARE APPROXIMATE ONLY.
  - LOCATION OF ALL SEWER AND WATER LINES TO BE CONFIRMED IN FIELD.
  - INSTALL NEW SEWER BY TRENCHLESS METHODS, UNLESS OTHERWISE NOTED.
  - TRAFFIC MANAGEMENT PLAN TO BE IMPLEMENTED AS PER SPECIFICATIONS DURING EACH PHASE OF CONTRACT.
  - ALL SIZING FOR SHAFTS ARE SHOWN FOR PLANNING ONLY. CONTRACTOR TO DETERMINE REQUIRED SHAFT SIZE BASED ON SELECTED METHODOLOGY.
  - CONTRACTOR'S TEMPORARY SHAFT TO HAVE A MIN. OF 1.0m OF PROPOSED LDS INSTALLED INSIDE SHAFT. SHAFT TO BE FULLY BACKFILLED WITH CONTROLLED LOW STRENGTH MATERIAL (MAX. 1MPa).

150 WM	WATER MAIN	150 WM	HYDRO	150 WM	WATER MAIN	150 WM
+	HYDRANT	+	M.T.S.	+	HYDRANT, VALVE	+
○	VALVE	○	CONCRETE	○	LAND DRAINAGE SEWER	○
300 LDS	LAND DRAINAGE SEWER	300 LDS	ASPHALT	300 LDS	WASTE WATER SEWER	300 LDS
250 WWS	WASTE WATER SEWER	250 WWS	SIDEWALK	250 WWS	CENTRELINE	250 WWS
○	MANHOLE	○	PLANNING	□	NORTH/WEST GUTTER	□
□	CATCH BASIN	□	PROPERTY LINE	○	SOUTH/EAST GUTTER	○
▽	CURB INLET	▽	SURVEY BAR	◇, ○	N/W, S/E R'S	◇, ○
∩	BEND	∩	GAS			
∩	REDUCER	∩	CURB STOP			
J	TEE	J	TEE			
EXISTING	LEGEND-PLAN	PROPOSED	EXISTING	LEGEND-PLAN	PROPOSED	EXISTING
				LEGEND-PROFILE	PROPOSED	

**LOCATION APPROVED UNDERGROUND STRUCTURES**  
 SUPV. U/G STRUCTURES COMMITTEE DATE  
 NOTE:  
 LOCATION OF UNDERGROUND STRUCTURES AS SHOWN ARE BASED ON THE BEST INFORMATION AVAILABLE BUT NO GUARANTEE IS GIVEN THAT ALL EXISTING UTILITIES ARE SHOWN OR THAT THE GIVEN LOCATIONS ARE EXACT. CONFIRMATION OF EXISTENCE AND EXACT LOCATION OF ALL SERVICES MUST BE OBTAINED FROM THE INDIVIDUAL UTILITIES BEFORE PROCEEDING WITH CONSTRUCTION.

B.M. ELEV.			
DESIGNED BY	SDG	CHECKED BY	MD
DRAWN BY	JBC	APPROVED BY	
B	ISSUED FOR RFQ	11/2017	JBC
A	ISSUED FOR REVIEW	10/2017	
NO.	REVISIONS	DATE	BY

**KGS GROUP CONSULTING ENGINEERS**

**ch2m**

ENGINEER'S SEAL

PRELIMINARY NOT FOR CONSTRUCTION

PROJECT TITLE  
 COCKBURN AND CALROSSIE COMBINED SEWER RELIEF WORKS - CONTRACT 5

TAYLOR AVENUE  
 STA 1+980 TO STA 2+090

CONSULTANT DRAWING NO.  
 C-246

DESIGNED BY: SDG  
 CHECKED BY: MD  
 DRAWN BY: JBC  
 APPROVED BY:  
 HOR. SCALE: 1:250  
 VERTICAL: 1:50  
 RELEASED FOR CONSTRUCTION:  
 DATE:

**APEGM**  
 Certificate of Authorization  
 CH2M HILL Canada Ltd.  
 No. 1441

**Winnipeg**  
 THE CITY OF WINNIPEG  
 WATER AND WASTE DEPARTMENT

SHEET OF  
 9 OF 25

COMPUTER FILE NAME  
 C-246.dwg

CITY DRAWING NUMBER  
 LD-8420

**KEY PLAN**

File name: C:\pw\_workdir\crt2mhill\_wbg\cortez\0436657\