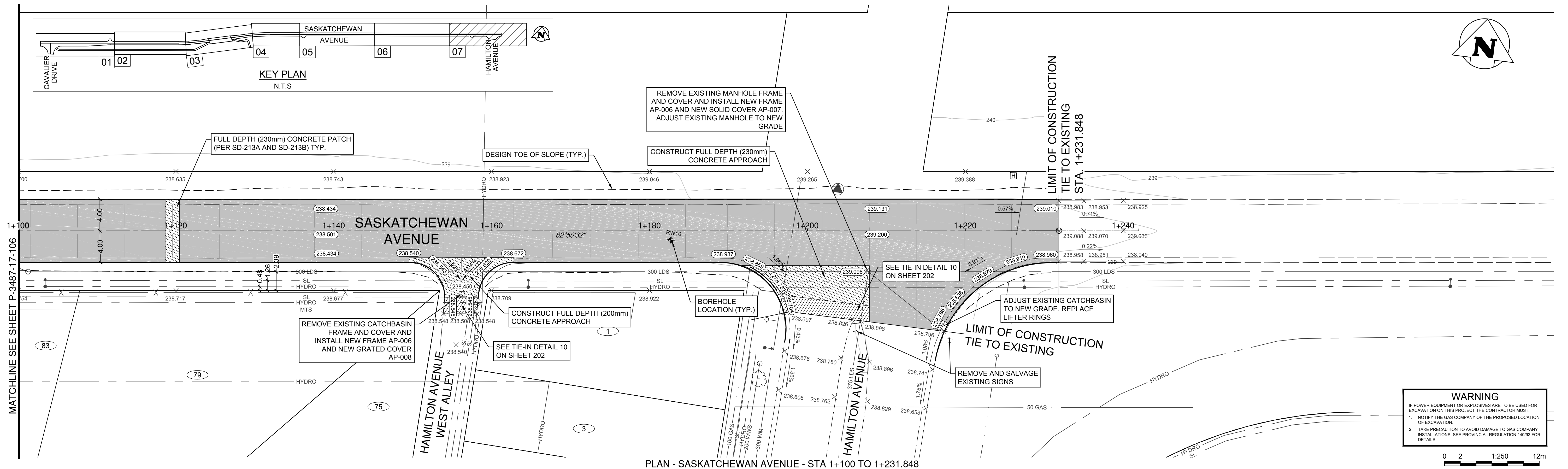
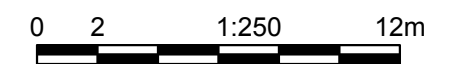


PROFILE - SASKATCHEWAN AVENUE - STA 1+100 TO 1+231.848



PLAN - SASKATCHEWAN AVENUE - STA 1+100 TO 1+231.848

**WARNING**  
 IF POWER EQUIPMENT OR EXPLOSIVES ARE TO BE USED FOR EXCAVATION ON THIS PROJECT THE CONTRACTOR MUST:  
 1. NOTIFY THE GAS COMPANY OF THE PROPOSED LOCATION OF EXCAVATION.  
 2. TAKE PRECAUTION TO AVOID DAMAGE TO GAS COMPANY INSTALLATIONS. SEE PROVINCIAL REGULATION 146/92 FOR DETAILS.



150 WM	WATERMAIN	150 WM	→	SWALE	→	RIGHT-OF-WAY	
400 FM	FEEDERMAIN	400 FM	○	MANHOLE	●	GAS	
300 LDS	LAND DRAINAGE SEWER	300 LDS	□	CATCHBASIN	■	HYDRO	
250 WWS	WASTEWATER SEWER	250 WWS		CATCHPIT	▲	MTS	
300 CS	COMBINED SEWER	300 CS		CATCHBASIN MANHOLE	■	DETECTABLE WARNING TILE	□
200 FCM	FORCEMAIN	200 FCM	H	HYDRO BOX	×	HYDRO	(32) (23)
	JUNCTIONS		+	HYDRO POLE	—	SIDEWALK	
	HYDRANT		⊕	LIGHT STANDARD	●	CURB	
	VALVE		⊗	ANCHOR	—	ASPHALT	
	CURB STOP		⊙	TREE	—	CONCRETE	
EXISTING	LEGEND-PLAN	PROPOSED	EXISTING	LEGEND-PLAN	PROPOSED	EXISTING	

**LOCATION APPROVED UNDERGROUND STRUCTURES**

SUPV. U/G STRUCTURES COMMITTEE

NOTE: LOCATION OF UNDERGROUND STRUCTURES AS SHOWN ARE BASED ON THE BEST INFORMATION AVAILABLE. BUT NO GUARANTEE IS GIVEN THAT ALL EXISTING UTILITIES ARE SHOWN OR THAT THE GIVEN LOCATIONS ARE EXACT. CONFIRMATION OF EXISTENCE AND EXACT LOCATION OF ALL SERVICES MUST BE OBTAINED FROM THE INDIVIDUAL UTILITIES BEFORE PROCEEDING WITH CONSTRUCTION.

B.M.	CITY OF WINNIPEG 40-42
ELEV.	238.985
NO.	ISSUED FOR TENDER
DATE	17.10.04
BY	DRA
NO.	REVISIONS
DATE	17.10.04

**TETRA TECH**

DESIGNED BY: DRA  
 CHECKED BY: AF  
 DRAWN BY: MT  
 APPROVED BY: EFS  
 HOR. SCALE: 1:250  
 VERTICAL: 1:10  
 DATE: 17.10.04

PROVINCE OF MANITOBA  
 D.R. ALEXANDER  
 ORIGINAL SIGNED 17.10.04 41334  
 REGISTERED PROFESSIONAL ENGINEER

**THE CITY OF WINNIPEG**  
 PUBLIC WORKS DEPARTMENT  
 ENGINEERING DIVISION

SASKATCHEWAN AT STURGEON CREEK  
 BRIDGE CONSTRUCTION

SASKATCHEWAN AVENUE ROADWORKS  
 PLAN, PROFILE & UTILITIES

CITY DRAWING NUMBER: P-3487-17-107  
 SHEET 55 OF 69  
 55

CONSULTANT DRAWING NO.: 1600070700-C055