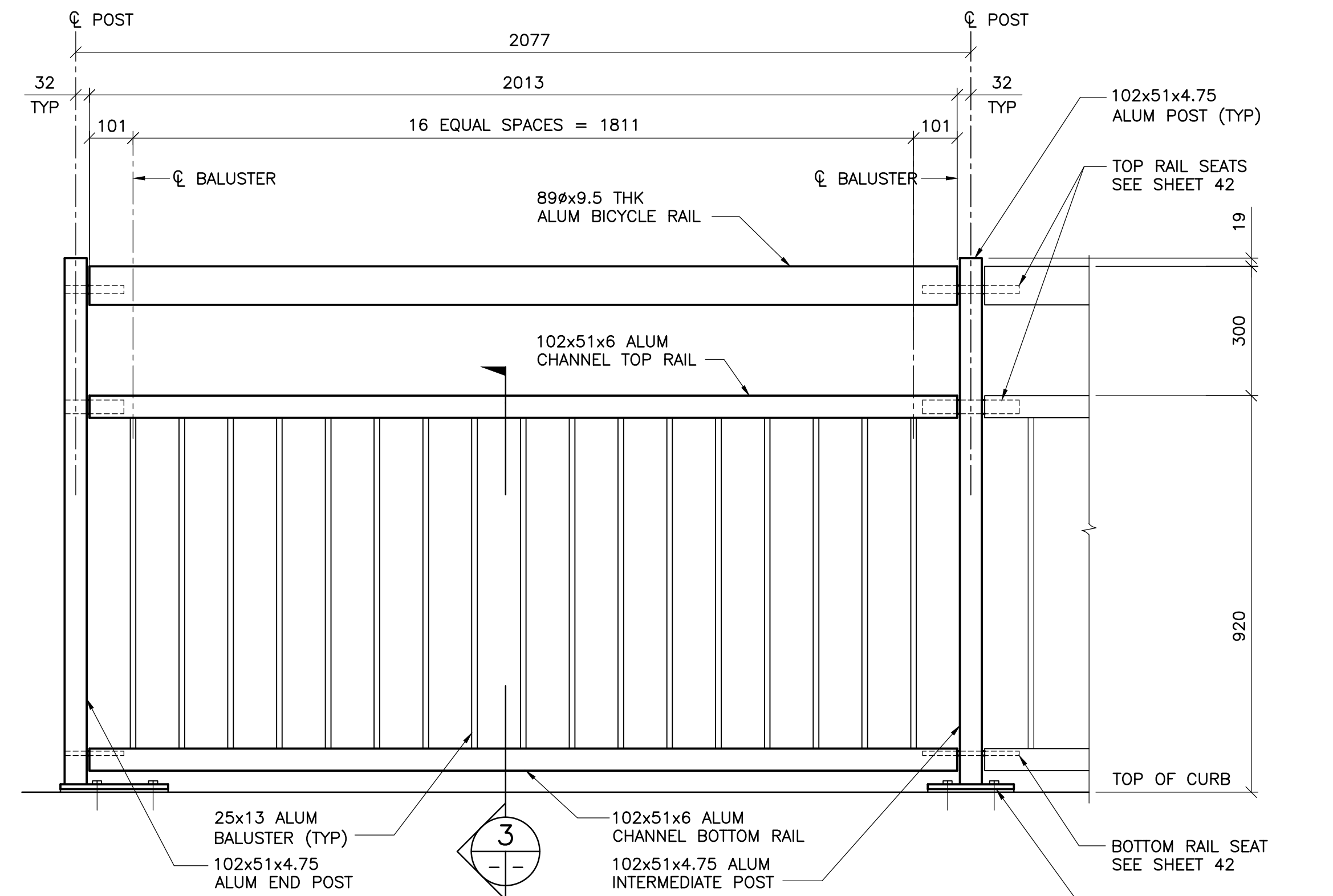
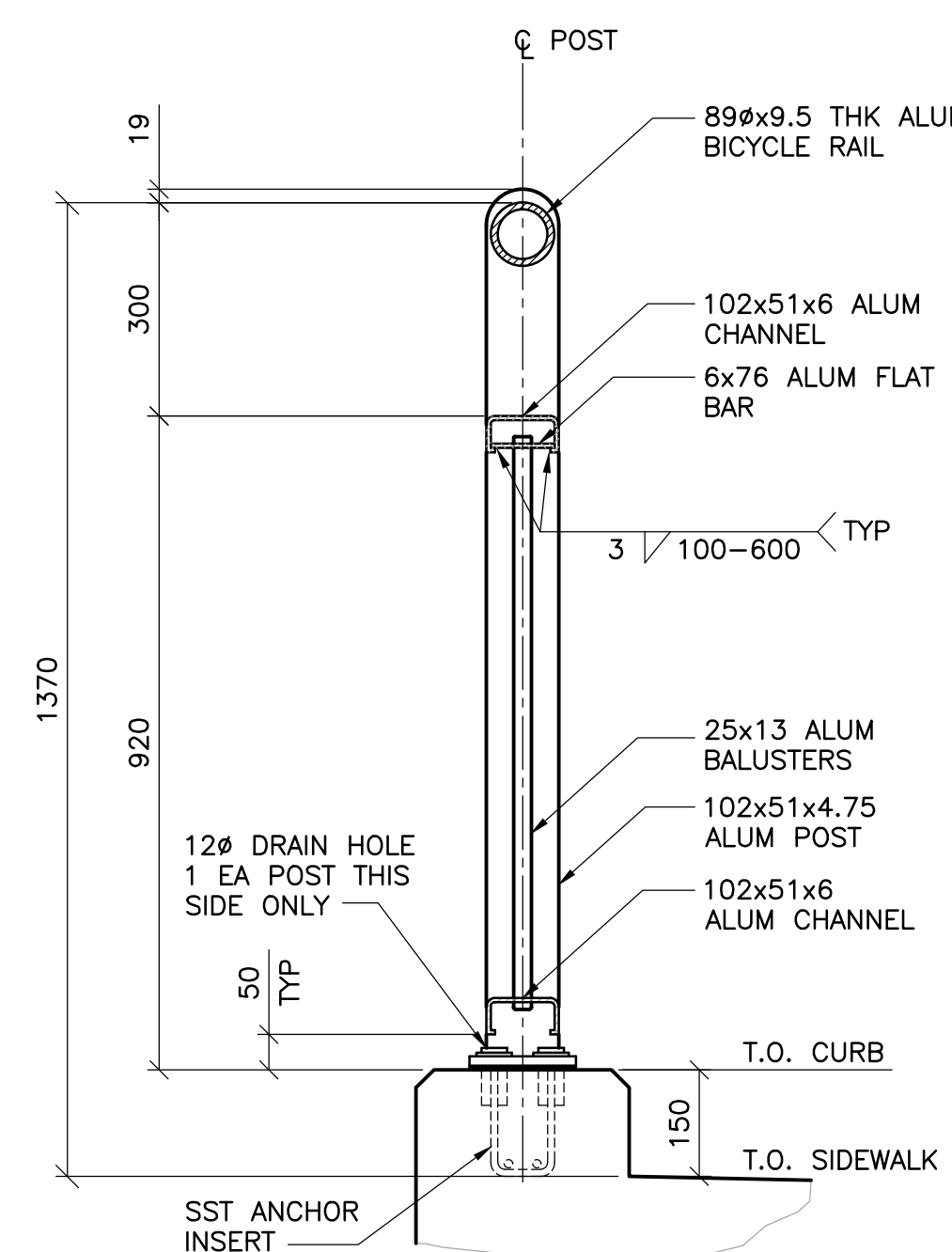


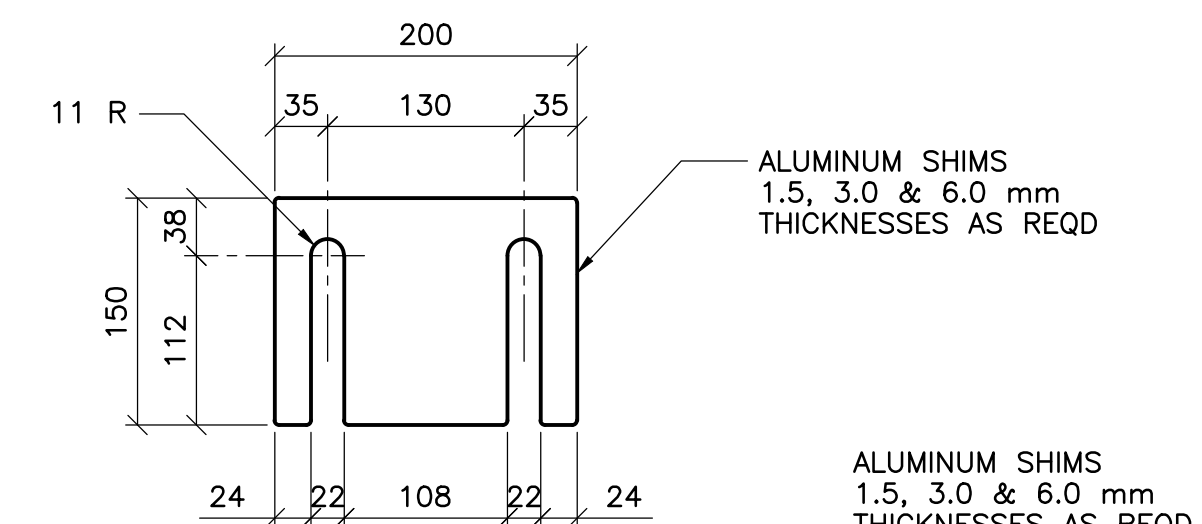
1 ELEVATION - INTERMEDIATE PANEL Mk. 'A'
1 : 10



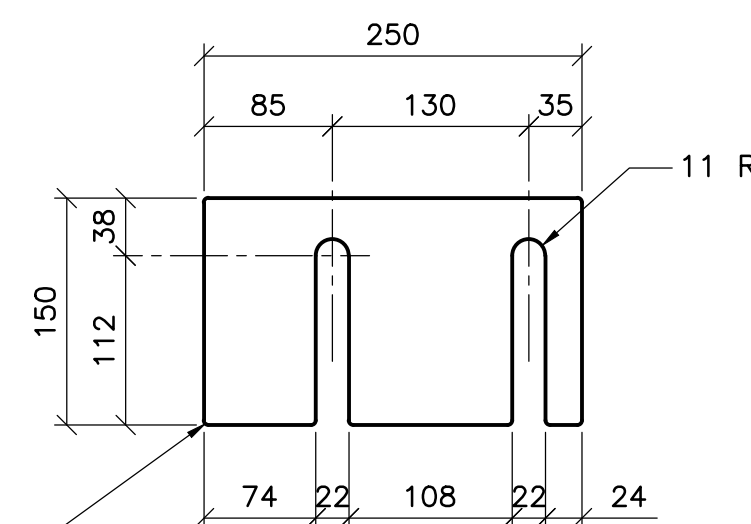
2 ELEVATION - END PANEL Mk. 'B'
1 : 10



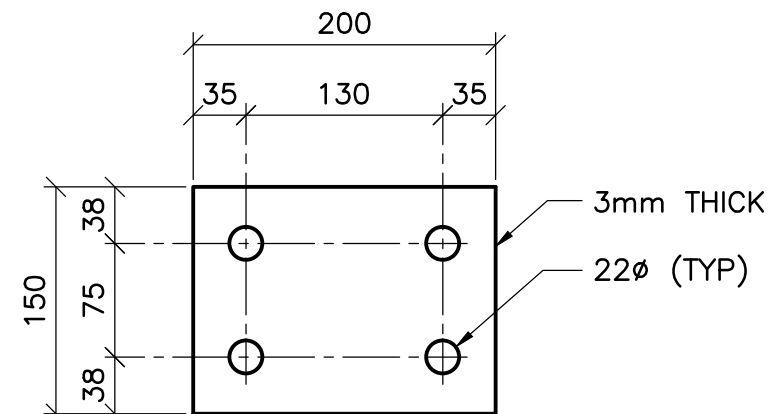
3 TYPICAL SECTION
1 : 10



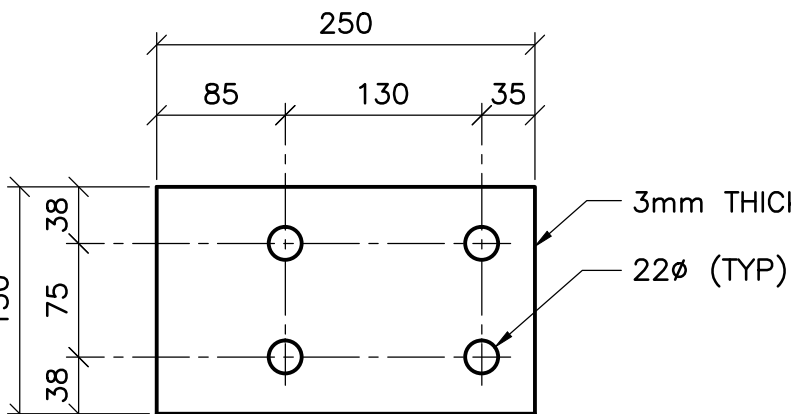
4 SHIM DETAIL
1 : 5
- TYP AT ALL INTERMEDIATE POST



5 SHIM DETAIL - END POST
1 : 5
- TYP AT ALL END POST



6 NEOPRENE PAD DETAIL
1 : 5
- TYP AT ALL INTERMEDIATE POST



7 NEOPRENE PAD DETAIL - END POST
1 : 5
- TYP AT ALL END POST

NOTES:

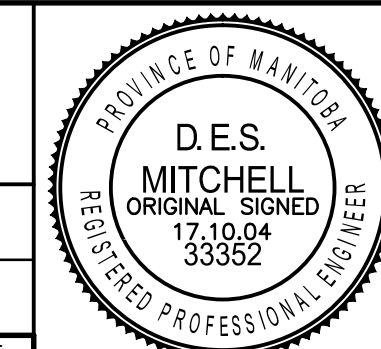
- ALUMINUM EXTRUSIONS SHALL CONFORM TO ASTM B221 ALLOY 6351-T6.
- ALUMINUM PLATES SHALL CONFORM TO ASTM B221 ALLOY 5083.
- THE M.I.G. PROCESS OF WELDING SHALL BE USED.
- SST DENOTES STAINLESS STEEL.
- RAIL POSTS AND BALUSTERS SHALL BE SET VERTICAL.
- PLACE MINIMUM OF ONE 3mm ALUMINUM SHIM UNDER EACH POST. ADDITIONAL SHIMS MAY BE REQUIRED FOR VERTICAL ALIGNMENT. THE SURFACE OF SHIMS IN CONTACT WITH CONCRETE SHALL BE PAINTED WITH 2 COATS OF ALKALI RESISTANT BITUMINOUS PAINT MEETING THE REQUIREMENTS OF CGSB 31-GP-3M.
- HANDRAIL ANCHOR INSERTS SHALL BE ACROW-RICHMOND TYPE DGRS-1.
- RAILING FABRICATOR TO FILED VERIFY ALL ANCHOR LOCATIONS AND CONCRETE SLOPES PRIOR TO FABRICATION.
- ALL DIMENSIONS SHOWN ARE PLAN DIMENSIONS. ACTUAL LENGTH DUE TO CURB PROFILE ARE NOT INCLUDED.



B.M. ELEV.	DATE	BY



DESIGNED BY	D.M.	CHECKED BY	J.Z.
DRAWN BY	G.I. / B.M.	APPROVED BY	E.F.S.
HOR. SCALE:	AS NOTED	ACCEPTED BY	DATE
VERTICAL:	AS NOTED	ORIGINAL DRAWING SIGNED BY	17.10.04
NO. REVISIONS	DATE	BY	DATE 17.10.04



THE CITY OF WINNIPEG
PUBLIC WORKS DEPARTMENT
ENGINEERING DIVISION

SASKATCHEWAN AVE AT STURGEON CREEK
BRIDGE CONSTRUCTION

CITY DRAWING NUMBER
B248-17-041
SHEET 41 OF 69

PEDESTRIAN HANDRAIL/BICYCLE RAIL
SECTIONS AND DETAILS

1600070700-DWG-S0041
CONSULTANT DRAWING NO.
1600070700-DWG-S0041