

**GENERAL NOTES:**

1. SPACING OF PILES, FOR ALL FOOTINGS AS SHOWN, IS AT THE BOTTOM OF FOOTINGS.
2. H-PILES ARE TO BE DRIVEN TO PRACTICAL REFUSAL IN TILL AND TO A MINIMUM TIP ELEVATION OF 224.0m.
3. PIPE PILES ARE TO BE DRIVEN TO PRACTICAL REFUSAL IN TILL, AND TO A MINIMUM TIP ELEVATION OF 223.5m
4. PRIOR TO INFILLING THE PIPE PILES WITH CONCRETE, REMOVE ALL LOOSE SOIL AND/OR BEDROCK IN THE PILE ABOVE THE PILE TIP.
5. REFER TO SHEETS 6 TO 8 FOR GEOTECHNICAL INFORMATION.
6. REFER TO SHEET 26 FOR PIPE PILES REINFORCING DETAILS.

**PIPE PILE NOTES:**

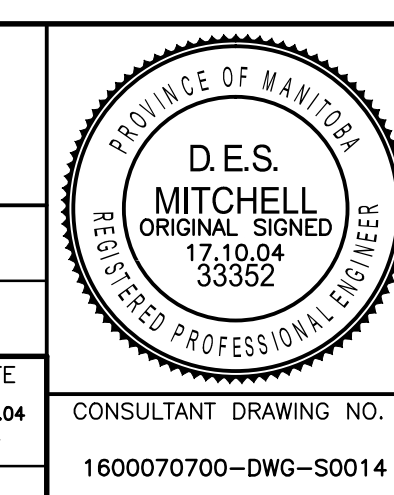
1. CUTTING SHOE SHALL BE INSIDE FLANGE TYPE WITH THE EXTERIOR FACE OF THE CUTTING SHOE FLUSH WITH STEEL PIPE PILE EXTERIOR FACE.
2. SLIP SHOE SHALL BE ATTACHED WITH A MINIMUM 8mm FILLET WELD AT THE TOP OF THE FLANGE. WELD ALL AROUND WITH A 70xx SERIES ROD.

**WELDING NOTES:**

1. LOW HYDROGEN E480 SERIES ELECTRODES SHALL BE USED.
2. THE MINIMUM ROOT PASS SHALL BE 6mm.
3. BEFORE UNDERTAKING THE BACK WELDS, THE WELD PREPARATION SHALL BE CARRIED OUT WITH A CARBON ARC-AIR GOUGER.



DESIGNED BY D.M.		CHECKED BY J.Z.	
DRAWN BY G.I.		APPROVED BY E.F.S.	
HOR. SCALE: AS NOTED		ACCEPTED BY DATE	
VERTICAL: AS NOTED		ORIGINAL DRAWING 17.10.04	
0 ISSUED FOR TENDER 17.10.04 D.M.		SIGNED BY: B. MUHRDAREVIC, P.ENG.	
NO. REVISIONS	DATE	BY	DATE 17.10.04



**THE CITY OF WINNIPEG**  
PUBLIC WORKS DEPARTMENT  
ENGINEERING DIVISION

SASKATCHEWAN AVE AT STURGEON CREEK BRIDGE CONSTRUCTION

CITY DRAWING NUMBER B248-17-014  
SHEET 14 OF 69

PILING LAYOUT AND DETAILS

1600070700-DWG-S0014

14