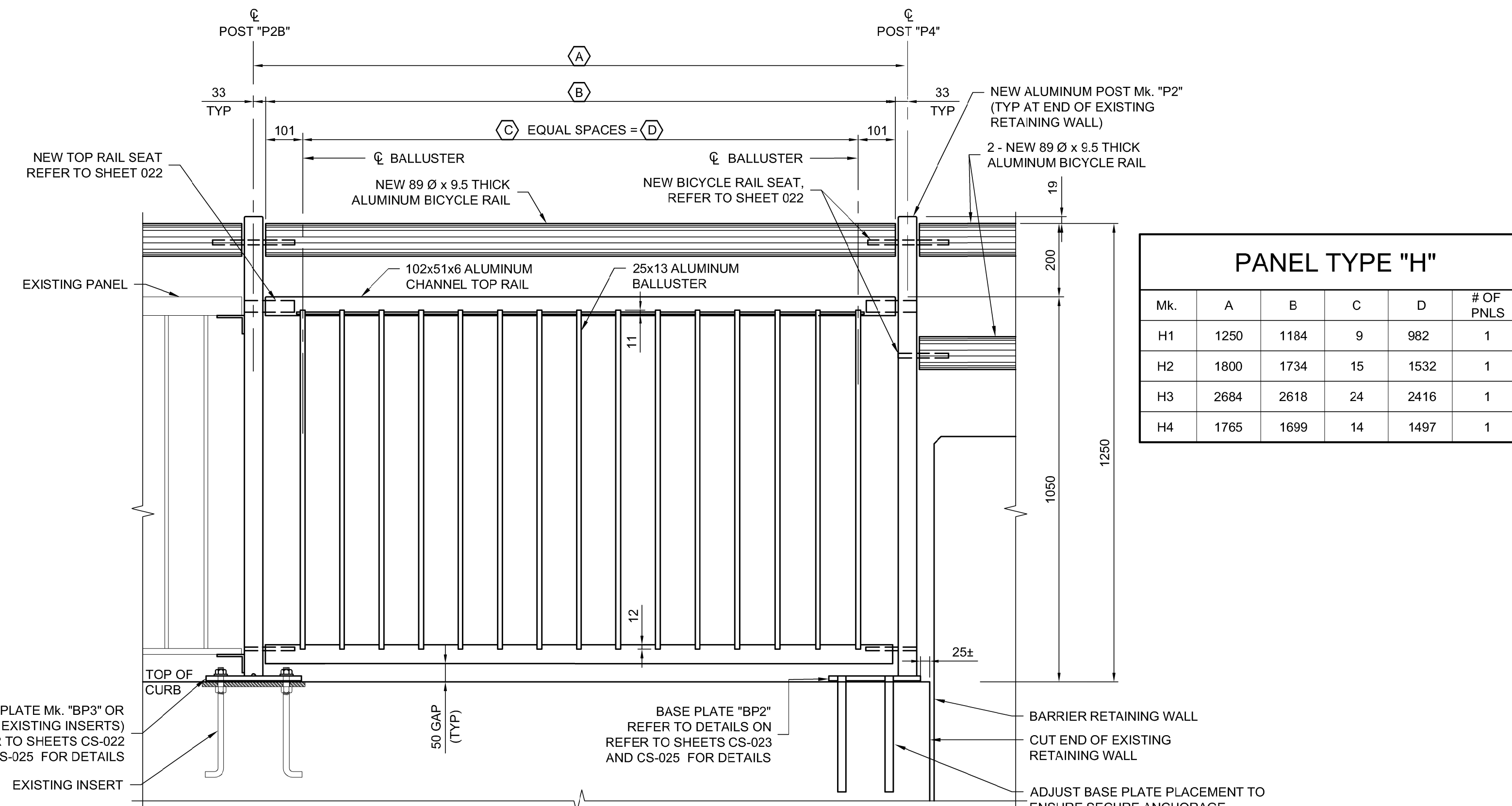
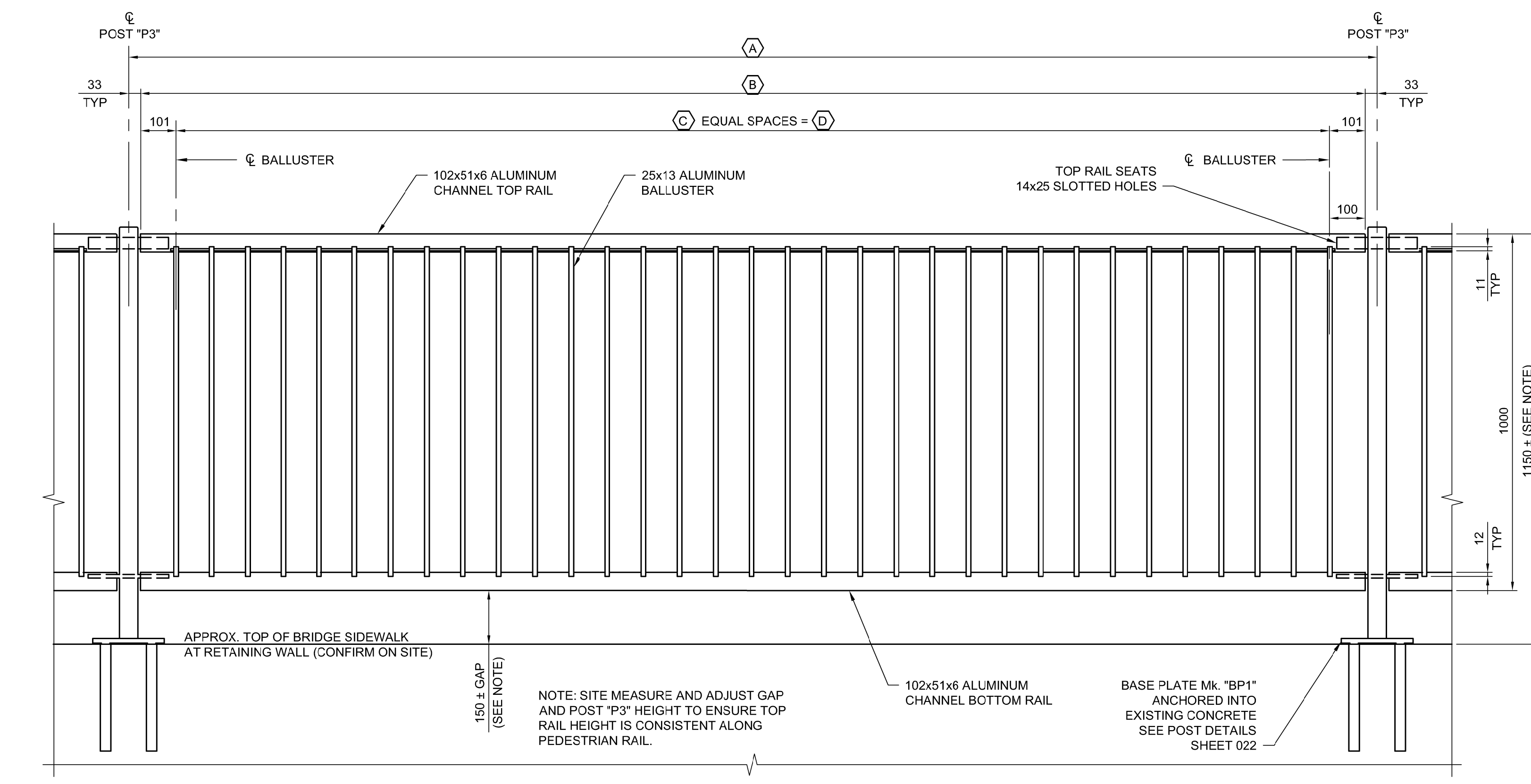


ELEVATION - PANEL Mk. "K"
1:10
INTERMEDIATE PANEL SHOWN



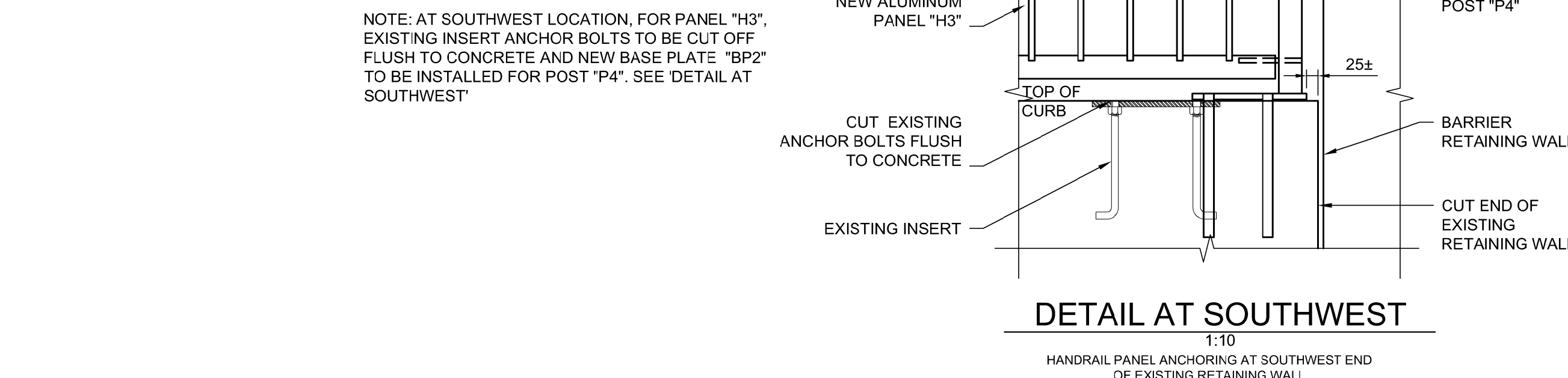
ELEVATION - PANELS Mk. "H1", "H2", "H3" & "H4"
1:10
TYP AT END OF EXISTING RETAINING WALL
"H4" SHOWN, OTHER PANELS SIMILAR

| PANEL TYPE "H" | | | | | |
|----------------|------|------|----|------|-----------|
| Mk. | A | B | C | D | # OF PNLS |
| H1 | 1250 | 1184 | 9 | 982 | 1 |
| H2 | 1800 | 1734 | 15 | 1532 | 1 |
| H3 | 2684 | 2618 | 24 | 2416 | 1 |
| H4 | 1765 | 1699 | 14 | 1497 | 1 |

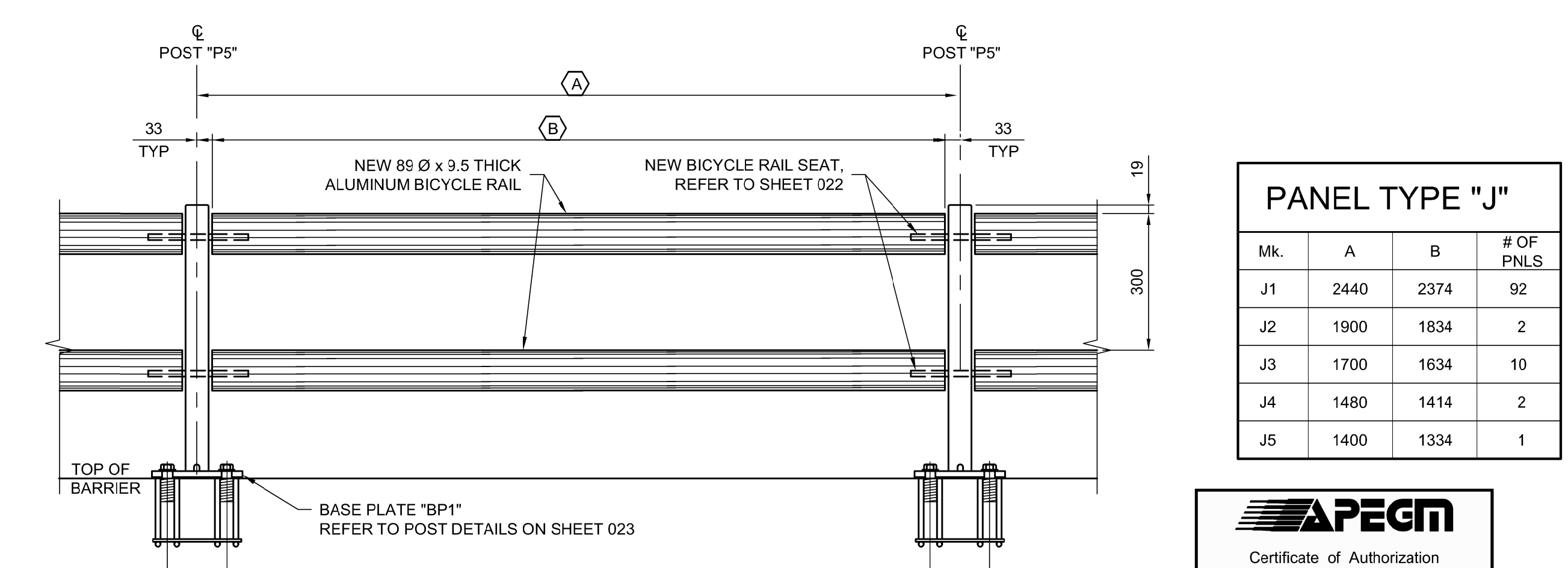


ELEVATION - PANELS Mk. "L1", "L2" & "L3"
1:10
INTERMEDIATE PANEL SHOWN
FOR PANELS DATA SEE CHART

| PANEL TYPE "L" | | | | | |
|----------------|------|------|----|------|-----------|
| Mk. | A | B | C | D | # OF PNLS |
| L1 | 3500 | 3434 | 32 | 3232 | 22 |
| L2 | 2617 | 2551 | 23 | 2349 | 1 |
| L3 | 2574 | 2508 | 23 | 2306 | 1 |



DETAIL AT SOUTHWEST
1:10
HANDRAIL PANEL ANCHORING AT SOUTHWEST END
OF EXISTING RETAINING WALL



ELEVATION - PANELS Mk. "J1", "J2", "J3", "J4" & "J5"
1:10
TYP ON NEW BARRIER WALL

| PANEL TYPE "J" | | | |
|----------------|------|------|-----------|
| Mk. | A | B | # OF PNLS |
| J1 | 2440 | 2374 | 92 |
| J2 | 1900 | 1834 | 2 |
| J3 | 1700 | 1634 | 10 |
| J4 | 1480 | 1414 | 2 |
| J5 | 1400 | 1334 | 1 |

APEGM
Certificate of Authorization
Dillon Consulting Limited (MB)
No. 1789 Date: 18/03/16

| | | | | | |
|--|----------------------------------|------------------------------|---------------------------|--|--|
| UNDERGROUND STRUCTURES SUPV. U/G STRUCTURES DATE | B.M. ELEV. | DESIGNED BY: DRA | | ENGINEER'S SEAL | |
| | | DRAWN BY: DJB | | | |
| LOCATION OF UNDERGROUND STRUCTURES AS SHOWN ARE BASED ON THE BEST INFORMATION AVAILABLE. BUT NO GUARANTEE IS GIVEN THAT ALL EXISTING UTILITIES ARE SHOWN OR THAT THE GIVEN LOCATIONS ARE EXACT. CONFIRMATION OF EXISTENCE AND EXACT LOCATION OF ALL SERVICES MUST BE OBTAINED FROM THE INDIVIDUAL UTILITIES BEFORE PROCEEDING WITH CONSTRUCTION. | 0 ISSUED FOR TENDER 18/03/16 TJP | CHECKED BY: DRA | RELEASED FOR CONSTRUCTION | CONSULTANT PROJECT NUMBER 17-6152 | 2018 REGIONAL STREET RENEWAL PROJECT McPHILLIPS STREET RECONSTRUCTION AND UNDERPASS STRUCTURAL IMPROVEMENTS LOGAN AVENUE TO JARVIS AVENUE |
| | | APPROVED BY: TJP | | | |
| NO. REVISIONS | DATE BY | HOR. SCALE: - VERTICAL: - | DATE | ALUMINUM PEDESTRIAN HANDRAIL DETAILS (1 OF 5) | CITY DRAWING NUMBER U212-18-CS-021-R0 |
| | | | | | CONSULTANT DRAWING NUMBER CS-021 |

G:\CAD\176152\Drawings\Structural\176152-CON-CS-PED-HANDRAIL-DETAILS-1.dwg