

**LDS CONSTRUCTION NOTES:**

- INSULATION REQUIRED OVER CATCH PIT LEADS TO CATCH BASINS.

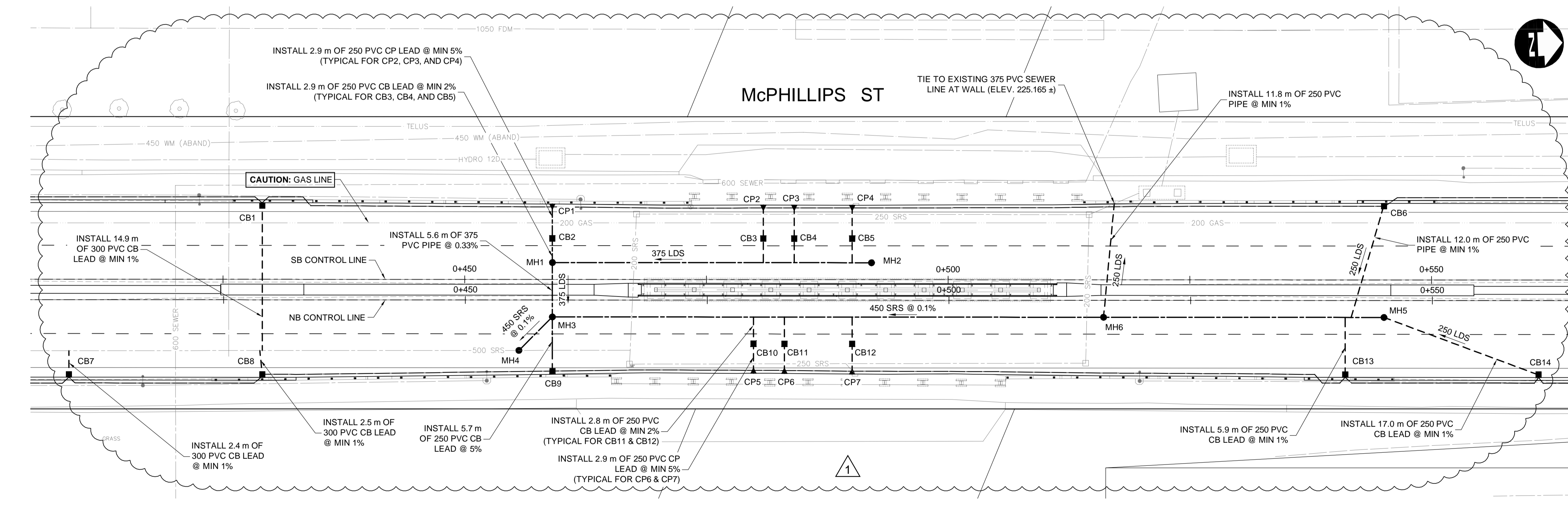
MANHOLES					
CB No.	STA.	RIM	N.INV	S.INV	E.INV
MH1	0+459.07	227.395	225.495	-	225.558
MH2	0+492.08	227.079	-	225.605	-
MH3	0+459.08	227.402	225.477	225.477	225.577
MH4	0+455.53	227.447	225.472	225.472	-
MH5	0+545.08	228.580	225.563	225.563	-
MH6	0+516.00	227.371	225.534	225.534	-

CATCH BASINS							
CB No.	AP	RIM	N.INV	S.INV	W.INV	E.INV	BTM.
CB1	AP-011 AP-012	228.641	-	-	-	226.841	226.241
CB2	AP-006 AP-008	227.344	-	-	226.190	225.610	225.010
CB3	AP-006 AP-008	226.972	-	-	226.030	225.705	225.105
CB4	AP-006 AP-008	226.988	-	-	226.040	225.720	225.120
CB5	AP-006 AP-008	227.018	-	-	226.060	225.740	225.140
CB6	AP-011 AP-012	228.390	-	-	-	226.390	225.790
CB7	AP-011 AP-012	229.785	-	-	228.285	-	227.685
CB8	AP-011 AP-012	228.687	-	-	227.180	-	226.580
CB9	AP-011 AP-012	227.298	-	-	225.698	-	225.098
CB10	AP-006 AP-008	226.942	-	-	225.653	225.797	225.053
CB11	AP-006 AP-008	226.958	-	-	225.669	225.813	225.069
CB12	AP-006 AP-008	226.993	-	-	225.704	225.848	225.104
CB13	AP-011 AP-012	228.256	-	-	226.756	-	226.156
CB14	AP-011 AP-012	229.355	-	-	227.500	-	226.900

CATCH PITS							
CP No.	AP	RIM	N.INV	S.INV	W.INV	E.INV	BTM.
CP1	AP-011 AP-012	227.280	-	-	-	226.350	226.200
CP2	AP-011 AP-012	226.913	-	-	-	226.190	226.040
CP3	AP-011 AP-012	226.926	-	-	-	226.200	226.050
CP4	AP-011 AP-012	226.959	-	-	-	226.210	226.060
CP5	AP-011 AP-012	226.892	-	-	225.942	-	225.792
CP6	AP-011 AP-012	226.908	-	-	225.958	-	225.808
CP7	AP-011 AP-012	226.943	-	-	225.993	-	225.843

**METRIC**  
WHOLE NUMBERS INDICATE MILLIMETRES  
DECIMALIZED NUMBERS INDICATE METRES

- WARNING**
- IF POWER EQUIPMENT OR EXPLOSIVES ARE TO BE USED FOR EXCAVATION ON THIS PROJECT THE CONTRACTOR MUST:
- NOTIFY THE GAS COMPANY OF THE PROPOSED LOCATION OF EXCAVATION.
  - TAKE PRECAUTION TO AVOID DAMAGE TO GAS COMPANY INSTALLATIONS SEE PROVINCIAL REGULATION 210/72 FOR DETAILS.
  - OBTAIN EXCAVATION PERMITS PRIOR TO CONSTRUCTION.



EXISTING	LEGEND-PLAN	PROPOSED	EXISTING	LEGEND-PLAN	PROPOSED	EXISTING	LEGEND-PROFILE	PROPOSED
150 WM	WATERMAIN	150 WM	CONCRETE	CONCRETE	CONCRETE	150 WM	WATERMAIN	150 WM
300 LDS	LAND DRAINAGE SEWER	300 LDS	ASPHALT	ASPHALT	ASPHALT	300 LDS	LAND DRAINAGE SEWER	300 LDS
250 WWS	WASTE WATER SEWER	250 WWS	PLANING	PLANING	PLANING	250 WWS	WASTE WATER SEWER	250 WWS
HYDRO	HYDRO	HYDRO	SIDEWALK	SIDEWALK	SIDEWALK	+	HYDRANT	+
MTS	M.T.S.	MTS	PAVING STONES	PAVING STONES	PAVING STONES	⊕	VALVE	⊕
100 GAS	GAS	100 GAS	PARTIAL DEPTH REPAIR	PARTIAL DEPTH REPAIR	PARTIAL DEPTH REPAIR	⊖	⊖ PROFILE	⊖
			PROPERTY LINE	PROPERTY LINE	PROPERTY LINE	---	NORTH/WEST GUTTER	---
			DRAINAGE ARROW	DRAINAGE ARROW	DRAINAGE ARROW	→	SOUTH/EAST GUTTER	---
			CURB RAMP (SD-229C)	CURB RAMP (SD-229C)	CURB RAMP (SD-229C)	▬	NORTH/WEST DITCH	---
			DETECTABLE WARNING SURFACE TILE (SD-229AA)	DETECTABLE WARNING SURFACE TILE (SD-229AA)	DETECTABLE WARNING SURFACE TILE (SD-229AA)	□	SOUTH/EAST DITCH	---

UNDERGROUND STRUCTURES			
SUPPLY	U/G STRUCTURES	DATE	
1	ISSUED FOR ADDENDUM 1	18/03/26	TJP
0	ISSUED FOR TENDER	18/03/16	TJP
NO.	REVISIONS	DATE	BY

DESIGNED BY			
DESIGNED BY	DATE	BY	
WPN			
TJH			
TS			
TJP			
1:250			
1:50			

**DILLON CONSULTING**

RELEASED FOR CONSTRUCTION

CONSULTANT PROJECT NUMBER: 17-6152

ENGINEER'S SEAL

PROVINCE OF MANITOBA

REGISTERED PROFESSIONAL ENGINEER

W.P. NAIRN  
18/03/16  
Member 34277

CONSULTANT PROJECT NUMBER: 17-6152

**THE CITY OF WINNIPEG**  
PUBLIC WORKS DEPARTMENT

2018 REGIONAL STREET RENEWAL PROJECT  
McPHILLIPS STREET RECONSTRUCTION AND UNDERPASS  
STRUCTURAL IMPROVEMENTS  
LOGAN AVENUE TO JARVIS AVENUE

CITY DRAWING NUMBER: P-3492-2018-CU-001  
SHEET 001 OF 002  
CONSULTANT DRAWING NUMBER: CU-001

G:\CAD\176152\Drawings\Utilities\Contract\176152-COON-CU-LDS.dwg