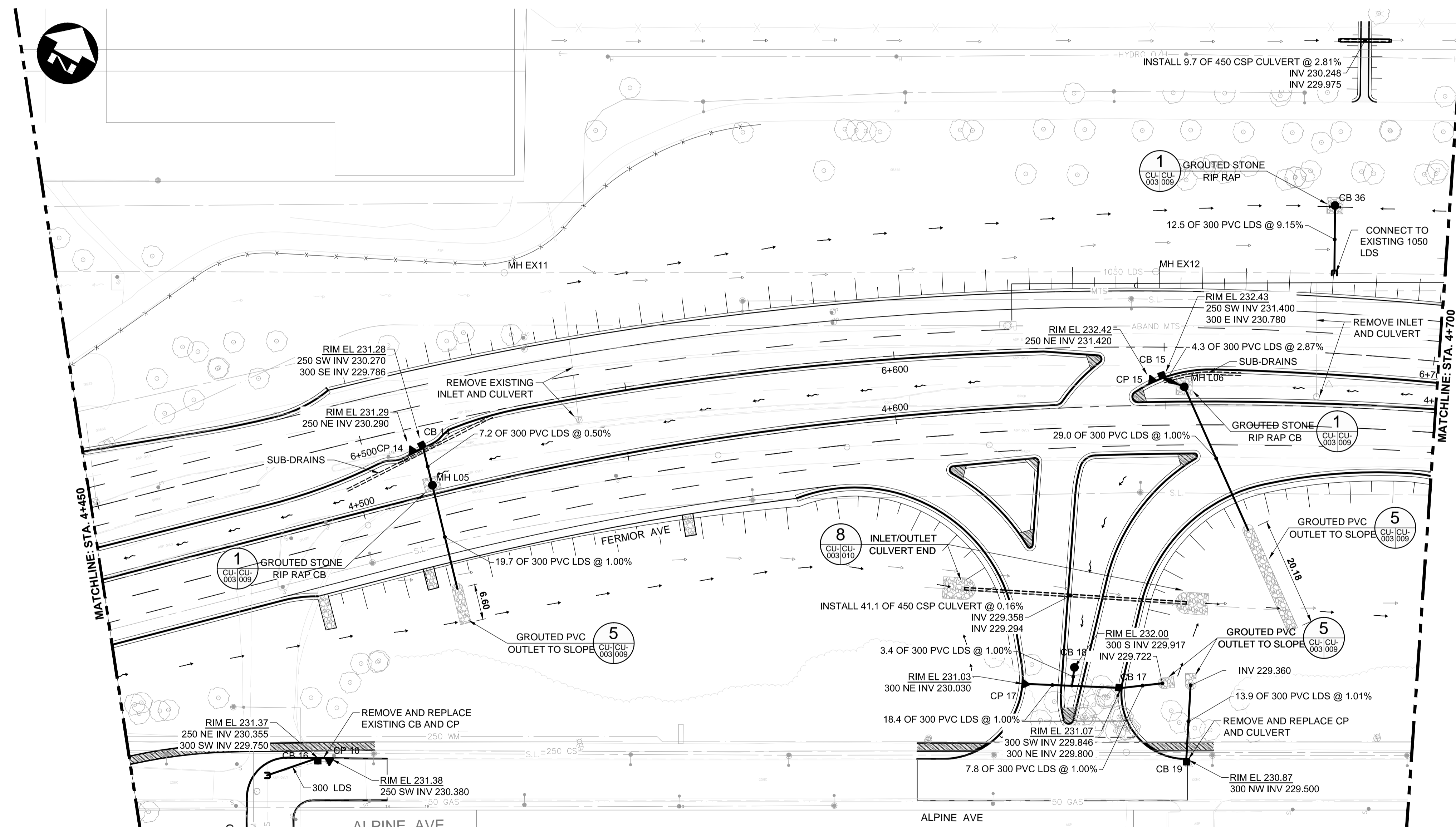


- CONSTRUCTION NOTES:**
- ALL DIMENSIONS ARE TO BACK OF CURB.
 - ISOLATE MISCELLANEOUS ITEMS IN NEW CONCRETE WORKS AS PER SD-228C.
 - LEGAL PLAN AND UNDERGROUND INFORMATION FROM CITY OF WINNIPEG LBIS.
 - CONTRACTOR TO TAKE PRECAUTIONARY STEPS TO AVOID DAMAGE FROM CONSTRUCTION ACTIVITIES TO TREES WITHIN THE LIMITS OF CONSTRUCTION.
 - LOCATION OF EXISTING SERVICES TO BE CONFIRMED IN THE FIELD BY THE CONTRACTOR.
 - CB LEADS TO BE INSTALLED AT MIN. 1.0% SLOPE OR AS DIRECTED BY CONTRACT ADMINISTRATOR.
 - ADJUST EXISTING CATCH BASINS AND MANHOLES AND ISOLATE AS PER SD-220A.
 - PROTECT EXISTING LEGAL PINS IN NEW PAVEMENT UTILIZING A WATER VALVE INSERT. GRIND OFF SYMBOL ON COVER.
 - CONCRETE PAVEMENT IN MINOR STREET APPROACHES, PRIVATE APPROACHES AND MEDIAN OPENINGS SHALL BE HAND PLACED WITH INTEGRAL CURB CONSTRUCTION (SD-203A OR SD-203B AS SPECIFIED). MAIN LINE CONCRETE PAVEMENT SHALL BE SLIP FORMED UNLESS OTHERWISE REQUIRED DUE TO TRAFFIC STAGING RESTRICTIONS.
 - INSTALL 150 mm SUB DRAIN IN BOTH DIRECTIONS OF CATCH BASINS WHERE INDICATED, ALONG PAVEMENT EDGE AS PER SD-245 AND CAP ENDS.
 - SEE STAGING DRAWINGS FOR REMOVAL AND ADJUSTMENT PHASING



METRIC

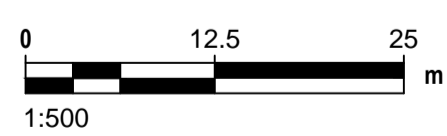
WHOLE NUMBERS INDICATE MILLIMETRES
DECIMALIZED NUMBERS INDICATE METRES

WARNING

IF POWER EQUIPMENT OR EXPLOSIVES ARE TO BE USED FOR EXCAVATION ON THIS PROJECT THE CONTRACTOR MUST:

- NOTIFY THE GAS COMPANY OF THE PROPOSED LOCATION OF EXCAVATION.
- TAKE PRECAUTION TO AVOID DAMAGE TO GAS COMPANY INSTALLATIONS SEE PROVINCIAL REGULATION 210/72 FOR DETAILS.
- OBTAIN EXCAVATION PERMITS PRIOR TO CONSTRUCTION.

APEGM
Certificate of Authorization
Dillon Consulting Limited (MB)
No. 1789 Date: 18/02/01



G:\CAD\175932\Drawings\Utilities\Contract\175932-CON-CU-LDS-PLAN-PROFILE-FERMOR.dwg

EXISTING	LEGEND-PLAN	PROPOSED	EXISTING	LEGEND-PLAN	PROPOSED	EXISTING	LEGEND-PROFILE	PROPOSED
150 WM	WATERMAIN	150 WM	CONCRETE	CONCRETE	CONCRETE	150 WM	WATERMAIN	150 WM
300 LDS	HYDRANT	300 LDS	ASPHALT	ASPHALT	ASPHALT	300 LDS	LAND DRAINAGE SEWER	300 LDS
250 WWS	VALVE	250 WWS	PLANING	PLANING	PLANING	250 WWS	WASTE WATER SEWER	250 WWS
100 GAS	MANHOLE	100 GAS	SIDEWALK	SIDEWALK	SIDEWALK	100 GAS	HYDRANT	100 GAS
300 LDS	CATCH BASIN	300 LDS	PAVING STONES	PAVING STONES	PAVING STONES	300 LDS	VALVE	300 LDS
250 WWS	CURB INLET	250 WWS	PARTIAL DEPTH REPAIR	PARTIAL DEPTH REPAIR	PARTIAL DEPTH REPAIR	250 WWS	CP PROFILE	250 WWS
100 GAS	LAND DRAINAGE SEWER	100 GAS	PROPERTY LINE	PROPERTY LINE	PROPERTY LINE	100 GAS	NORTH/WEST GUTTER	100 GAS
100 GAS	WASTE WATER SEWER	100 GAS	DRAINAGE ARROW	DRAINAGE ARROW	DRAINAGE ARROW	100 GAS	SOUTH/EAST GUTTER	100 GAS
100 GAS	HYDRO	100 GAS	CURB RAMP (SD-229C)	CURB RAMP (SD-229C)	CURB RAMP (SD-229C)	100 GAS	NORTH/WEST DITCH	100 GAS
100 GAS	M.T.S.	100 GAS	DETECTABLE WARNING SURFACE TILE (SD-229AA)	DETECTABLE WARNING SURFACE TILE (SD-229AA)	DETECTABLE WARNING SURFACE TILE (SD-229AA)	100 GAS	SOUTH/EAST DITCH	100 GAS
100 GAS	GAS	100 GAS				100 GAS		100 GAS

UNDERGROUND STRUCTURES

SUPV. U/G STRUCTURES DATE

LOCATION OF UNDERGROUND STRUCTURES AS SHOWN ARE BASED ON THE BEST INFORMATION AVAILABLE BUT NO GUARANTEE IS GIVEN THAT ALL EXISTING UTILITIES ARE SHOWN OR THAT THE GIVEN LOCATIONS ARE EXACT. CONFIRMATION OF EXISTENCE AND EXACT LOCATION OF ALL SERVICES MUST BE OBTAINED FROM THE INDIVIDUAL UTILITIES BEFORE PROCEEDING WITH CONSTRUCTION.

B.M. ELEV.	DESIGNED BY	WPN
	DRAWN BY	GLG
	CHECKED BY	WPN
	APPROVED BY	
	HOR. SCALE	1:500
	VERTICAL	1:50
0	ISSUED FOR TENDER	18/02/09 WPN
NO.	REVISIONS	DATE BY

DILLON CONSULTING

DESIGNED BY: WPN
DRAWN BY: GLG
CHECKED BY: WPN
APPROVED BY: -
HOR. SCALE: 1:500
VERTICAL: 1:50

ENGINEER'S SEAL
PROVINCE OF MANITOBA
REGISTERED PROFESSIONAL ENGINEER
W.P. NAIRN
CONSULTANT PROJECT NUMBER
17-5932

THE CITY OF WINNIPEG
PUBLIC WORKS DEPARTMENT

FERMOR AVENUE BRIDGE OVER SEINE RIVER
BRIDGE REHABILITATION, PEDESTRIAN-CYCLIST UNDERPASS STRUCTURE AND ROADWORKS FROM ST. ANNE'S ROAD TO ARCHIBALD STREET

CITY DRAWING NUMBER
P-3489-2017-CU-003
SHEET
003 OF 11
CONSULTANT DRAWING NUMBER
CU-003

FERMOR AVENUE - STA. 4+450 TO STA. 4+700 (PLAN-PROFILE)