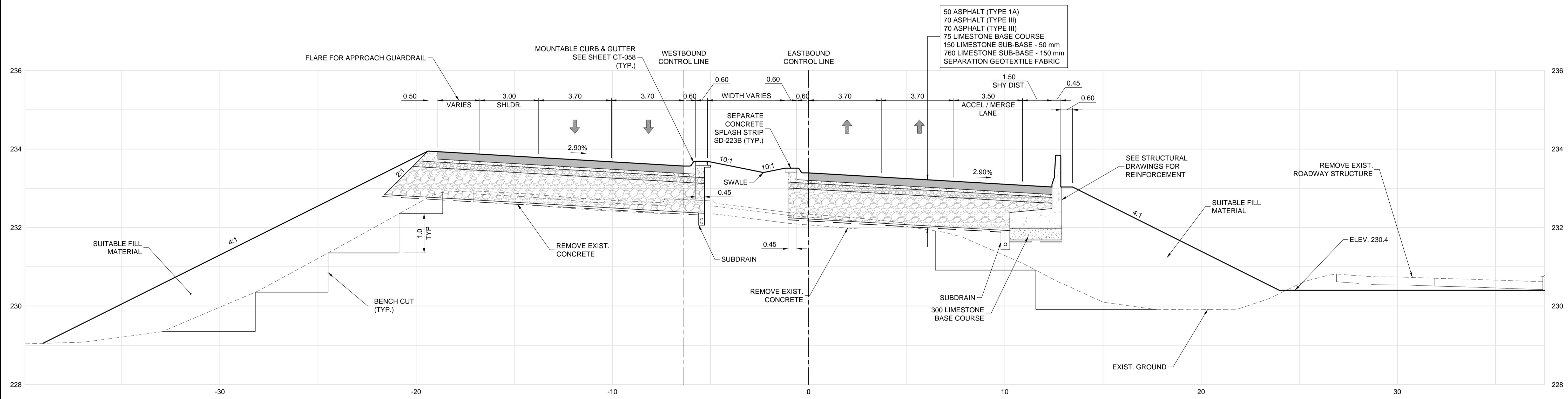


D FERMOR - STA: 4+570
SCALE: HORZ. 1:100 VERT. 1:50



E FERMOR - STA: 4+805
SCALE: HORZ. 1:100 VERT. 1:50

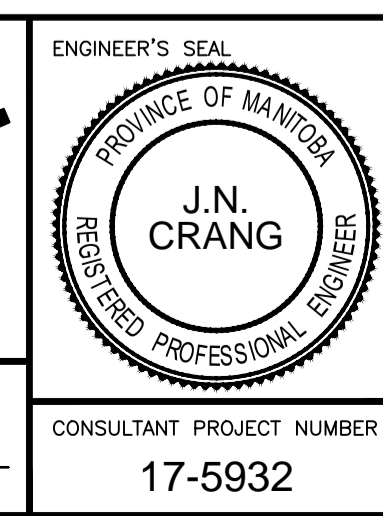
APEGM
Certificate of Authorization
Dillon Consulting Limited (MB)
No. 1789 Date: 18/02/09

UNDERGROUND STRUCTURES	
SUPV. U/G STRUCTURES	DATE

LOCATION OF UNDERGROUND STRUCTURES AS SHOWN ARE BASED ON THE BEST INFORMATION AVAILABLE, BUT NO GUARANTEE IS GIVEN THAT ALL EXISTING UTILITIES ARE SHOWN OR THAT THE GIVEN LOCATIONS ARE EXACT. CONFIRMATION OF EXISTENCE AND EXACT LOCATION OF ALL SERVICES MUST BE OBTAINED FROM THE INDIVIDUAL UTILITIES BEFORE PROCEEDING WITH CONSTRUCTION.

B.M. ELEV.	SEE SHEET CT-001 FOR CONTROL POINT INFORMATION

DESIGNED BY	JAT			
DRAWN BY	PMW			
CHECKED BY	JNC			
APPROVED BY	JNC			
HOR. SCALE	AS NOTED			
VERTICAL	AS NOTED			
NO.	REVISIONS	DATE	BY	DATE
0	ISSUED FOR TENDER	18/02/09	JNC	



THE CITY OF WINNIPEG
PUBLIC WORKS DEPARTMENT

FERMOR AVENUE BRIDGE OVER SEINE RIVER
BRIDGE REHABILITATION, PEDESTRIAN-CYCLIST UNDERPASS STRUCTURE AND ROADWORKS FROM ST. ANNE'S ROAD TO ARCHIBALD STREET

CITY DRAWING NUMBER: P-3489-2017-CT-053
SHEET 053 OF 067
CONSULTANT DRAWING NUMBER: CT-053

CROSS SECTIONS (2 OF 6)

CONSULTANT PROJECT NUMBER: 17-5932

RELEASED FOR CONSTRUCTION DATE:

G:\CAD\175932\Drawings\Roadworks\Contract\175932-CON-CT-SECTIONS.dwg