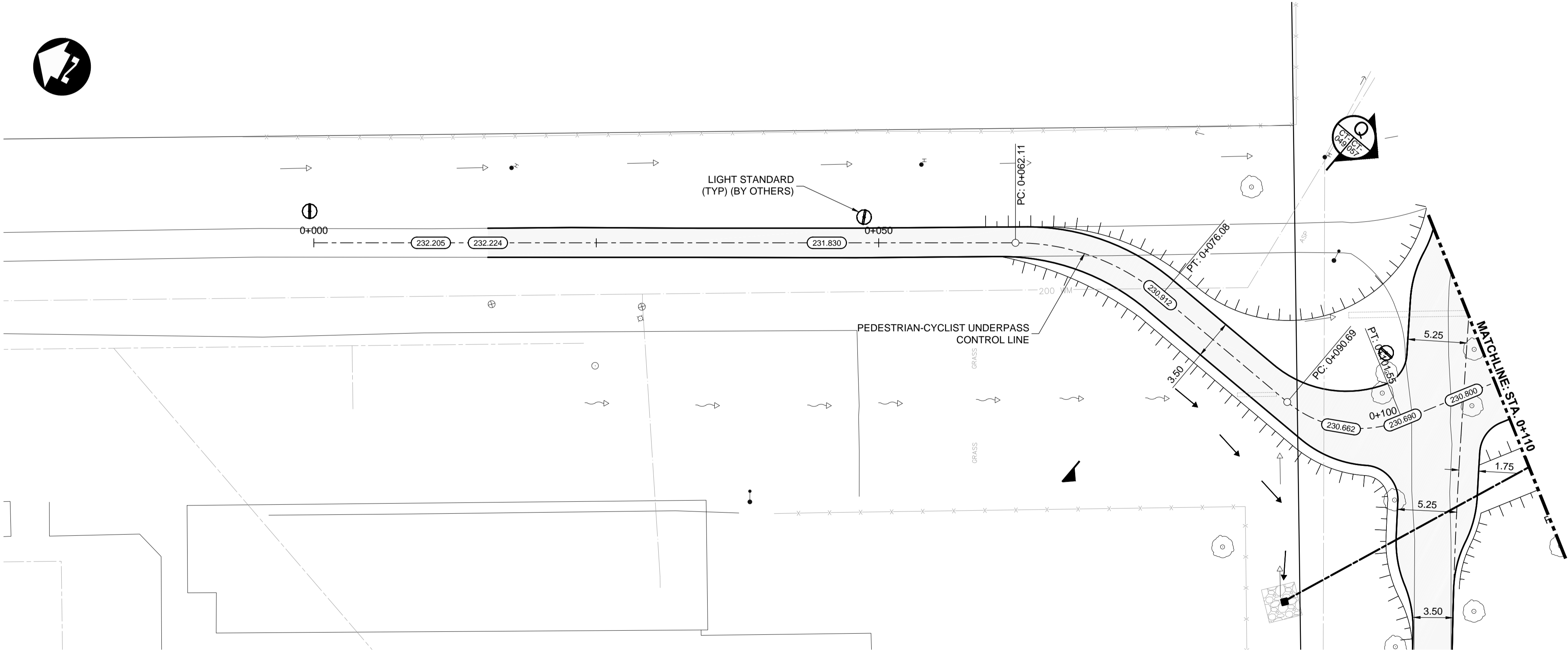


- CONSTRUCTION NOTES:**
- LEGAL PLAN AND UNDERGROUND INFORMATION FROM CITY OF WINNIPEG LBIS. CONTRACTOR TO VERIFY ALL UNDERGROUNDS IN THE FIELD.
 - ISOLATE MISCELLANEOUS ITEMS IN NEW CONCRETE WORKS AS PER SD-228C.
 - CONTRACTOR TO TAKE PRECAUTIONARY STEPS TO AVOID DAMAGE FROM CONSTRUCTION ACTIVITIES TO TREES WITHIN THE LIMIT OF CONSTRUCTION.
 - CONTRACTOR TO TAKE PRECAUTIONARY STEPS TO CONTROL EROSION BY USING STRAW WATTLES, AS REQUIRED.
 - LOCATION OF ALL EXISTING SERVICES TO BE CONFIRMED IN THE FIELD BY CONTRACTOR.
 - CONTRACTOR SHALL CONFIRM EXISTING LEAD INVERT ELEVATIONS PRIOR TO INSTALLATION.
 - ADJUST MH AND CB RIMS TO NEW GRADES.
 - REFER TO LAND DRAINAGE DRAWINGS FOR ADDITIONAL UNDERGROUND INFORMATION REGARDING MANHOLES, CATCH BASINS, CULVERT ELEVATIONS, AND OUTLET DETAILS.
 - REFER TO LANDSCAPE DRAWINGS FOR DETAILS ON ISLANDS, AND ADDITIONAL SURFACE WORK DETAILS.



METRIC

WHOLE NUMBERS INDICATE MILLIMETRES
DECIMALIZED NUMBERS INDICATE METRES

WARNING

- IF POWER EQUIPMENT OR EXPLOSIVES ARE TO BE USED FOR EXCAVATION ON THIS PROJECT THE CONTRACTOR MUST:
- NOTIFY THE GAS COMPANY OF THE PROPOSED LOCATION OF EXCAVATION.
 - TAKE PRECAUTION TO AVOID DAMAGE TO GAS COMPANY INSTALLATIONS SEE PROVINCIAL REGULATION 210/72 FOR DETAILS.
 - OBTAIN EXCAVATION PERMITS PRIOR TO CONSTRUCTION.

APEGM
Certificate of Authorization
Dillon Consulting Limited (MB)
No. 1789 Date: 18/02/09

150 WM	WATERMAIN	150 WM	CONCRETE	150 WM	WATERMAIN	150 WM	WATERMAIN
HYDRANT	HYDRANT	ASPHALT	LAND DRAINAGE SEWER	300 LDS	LAND DRAINAGE SEWER	300 LDS	LAND DRAINAGE SEWER
VALVE	VALVE	PLANING	WASTE WATER SEWER	250 WWS	WASTE WATER SEWER	250 WWS	WASTE WATER SEWER
MANHOLE	MANHOLE	SIDEWALK	HYDRANT		HYDRANT		HYDRANT
CATCH BASIN	CATCH BASIN	PAVING STONES	VALVE		VALVE		VALVE
CURB INLET	CURB INLET	PARTIAL DEPTH REPAIR	Q PROFILE		Q PROFILE		Q PROFILE
300 LDS	LAND DRAINAGE SEWER	PROPERTY LINE	NORTH/WEST GUTTER		NORTH/WEST GUTTER		NORTH/WEST GUTTER
250 WWS	WASTE WATER SEWER	DRAINAGE ARROW	SOUTH/EAST GUTTER		SOUTH/EAST GUTTER		SOUTH/EAST GUTTER
HYDRO	HYDRO	CURB RAMP (SD-229C)	NORTH/WEST DITCH		NORTH/WEST DITCH		NORTH/WEST DITCH
M.T.S.	M.T.S.	DETECTABLE WARNING SURFACE TILE (SD-229AA)	SOUTH/EAST DITCH		SOUTH/EAST DITCH		SOUTH/EAST DITCH
100 GAS	GAS						
EXISTING	LEGEND-PLAN	PROPOSED	EXISTING	LEGEND-PLAN	PROPOSED	EXISTING	LEGEND-PROFILE

UNDERGROUND STRUCTURES

SUPPLY U/G STRUCTURES DATE

LOCATION OF UNDERGROUND STRUCTURES AS SHOWN ARE BASED ON THE BEST INFORMATION AVAILABLE, BUT NO GUARANTEE IS GIVEN THAT ALL EXISTING UTILITIES ARE SHOWN OR THAT THE GIVEN LOCATIONS ARE EXACT. CONFIRMATION OF EXISTENCE AND EXACT LOCATION OF ALL SERVICES MUST BE OBTAINED FROM THE INDIVIDUAL UTILITIES BEFORE PROCEEDING WITH CONSTRUCTION.

B.M. ELEV.

SEE SHEET CT-001 FOR CONTROL POINT INFORMATION

NO.	REVISIONS	DATE	BY
0	ISSUED FOR TENDER	18/02/09	JNC

DESIGNED BY: JAT

DRAWN BY: PMW

CHECKED BY: JNC

APPROVED BY: JNC

HOR. SCALE: 1:250

VERTICAL: 1:10

DILLON CONSULTING

RELEASED FOR CONSTRUCTION

DATE

THE CITY OF WINNIPEG PUBLIC WORKS DEPARTMENT

FERMOR AVENUE BRIDGE OVER SEINE RIVER

BRIDGE REHABILITATION, PEDESTRIAN-CYCLIST UNDERPASS STRUCTURE AND ROADWORKS FROM ST. ANNE'S ROAD TO ARCHIBALD STREET

PEDESTRIAN UNDERPASS - START TO STA. 0+115 (PLAN-PROFILE)

CITY DRAWING NUMBER: P-3489-2017-CT-049

SHEET: 049 OF 067

CONSULTANT DRAWING NUMBER: CT-049

CONSULTANT PROJECT NUMBER: 17-5932

G:\CAD\175932\Drawings\Roadworks\Contract\175932-CON-CT-PLAN-PROFILE-PATHWAYS.dwg