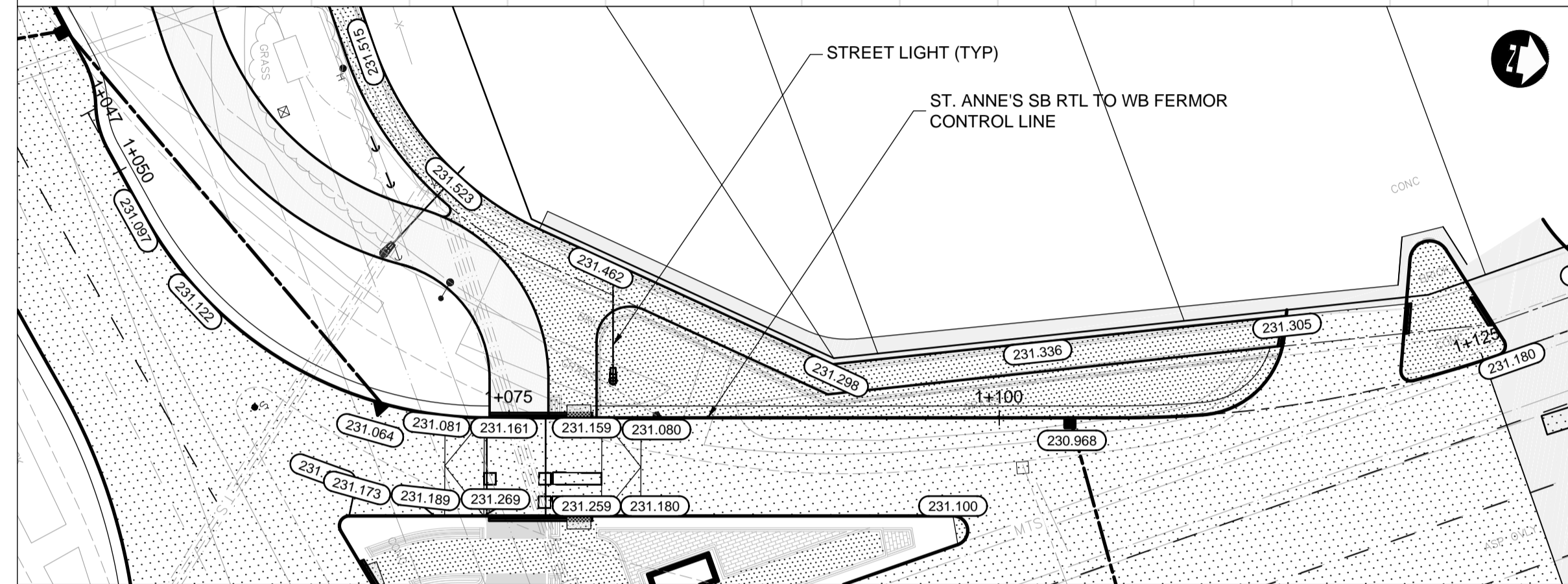
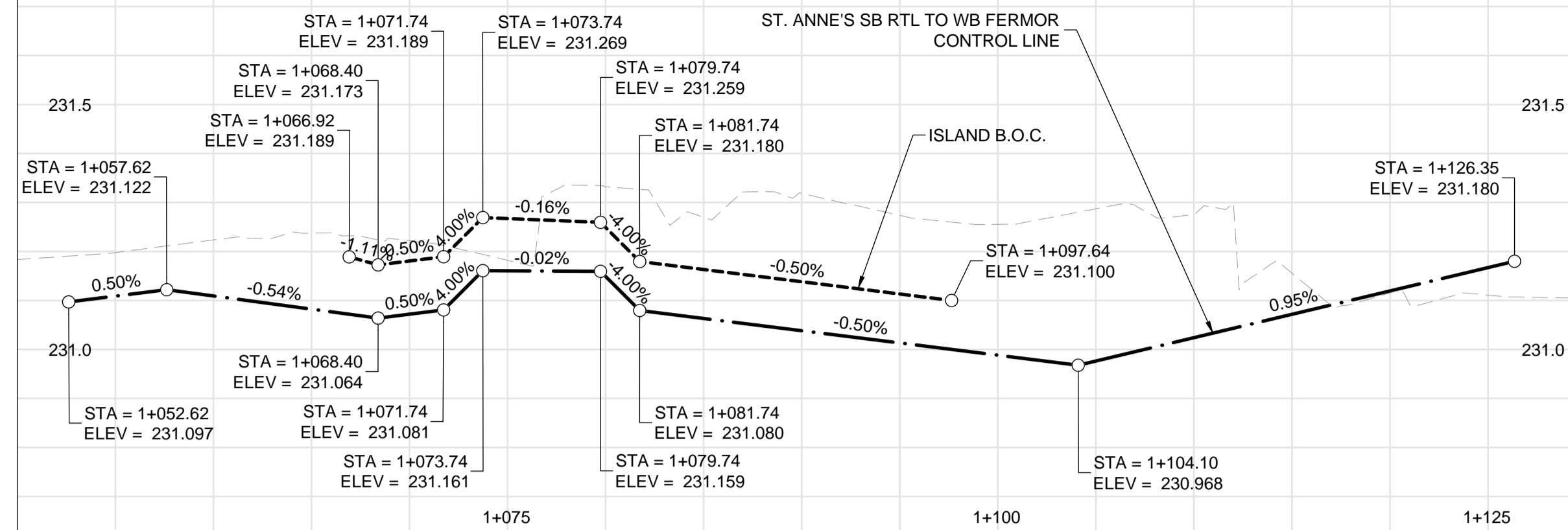
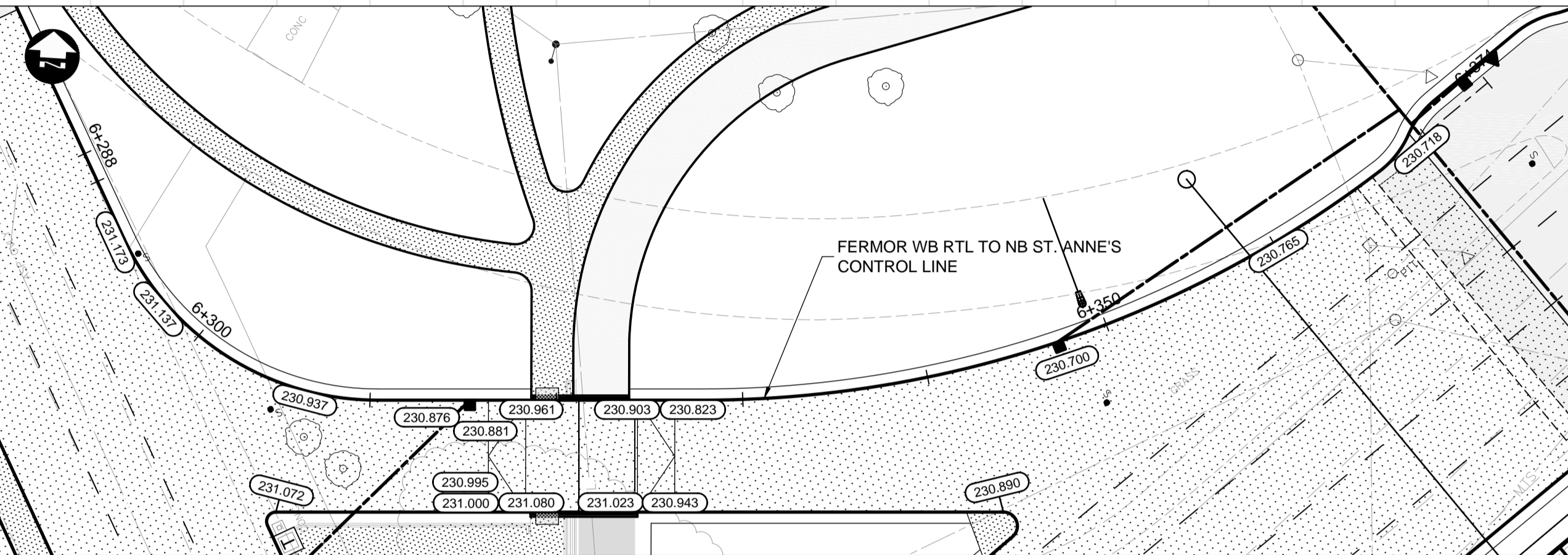
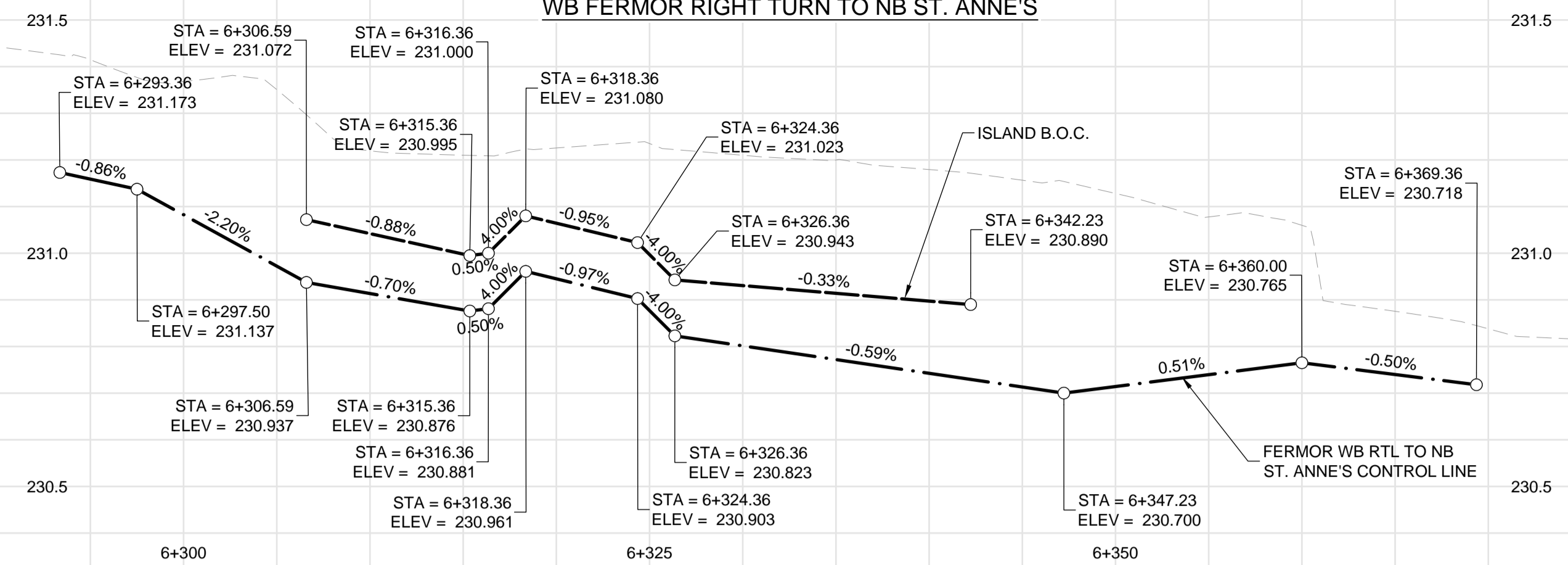


SB ST. ANNE'S RIGHT TURN TO WB FERMOR

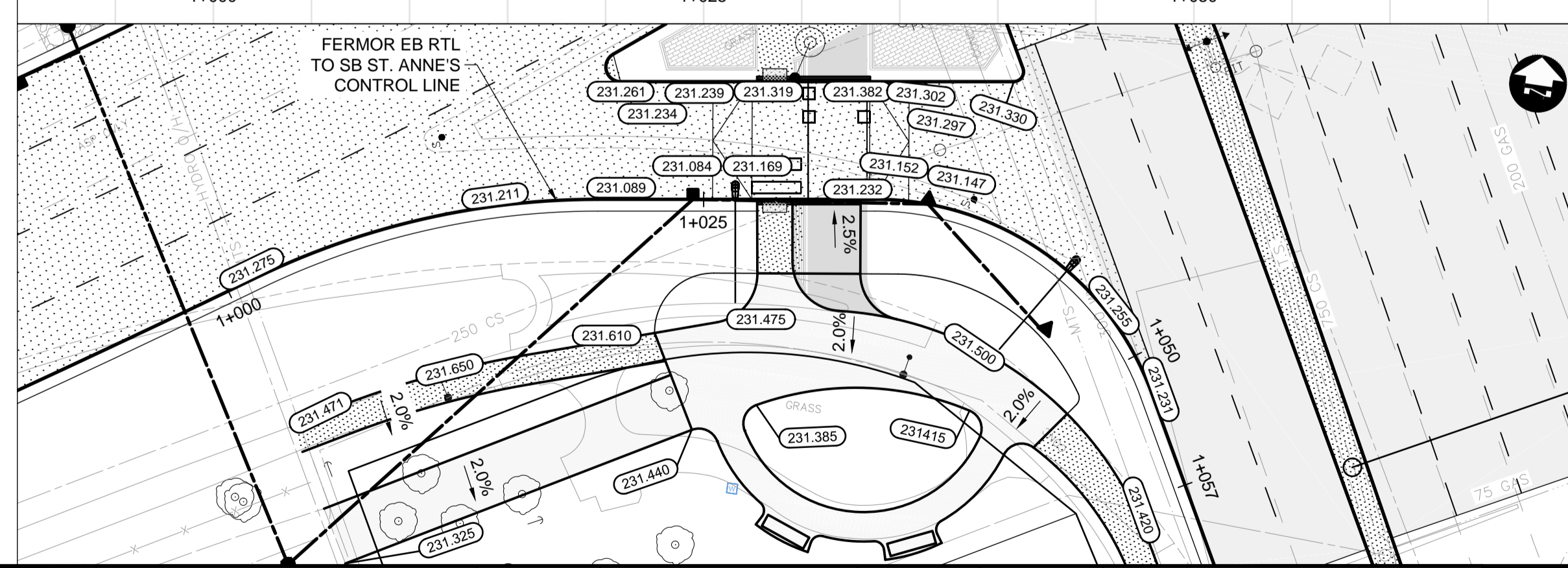
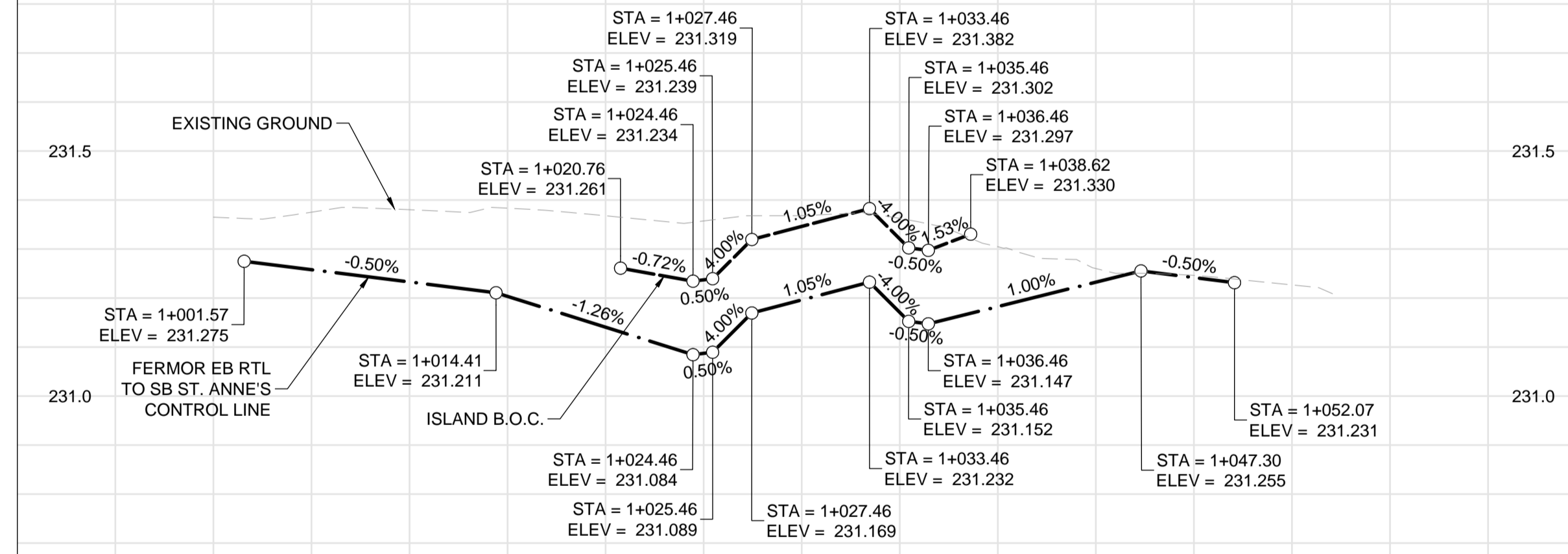


WB FERMOR RIGHT TURN TO NB ST. ANNE'S

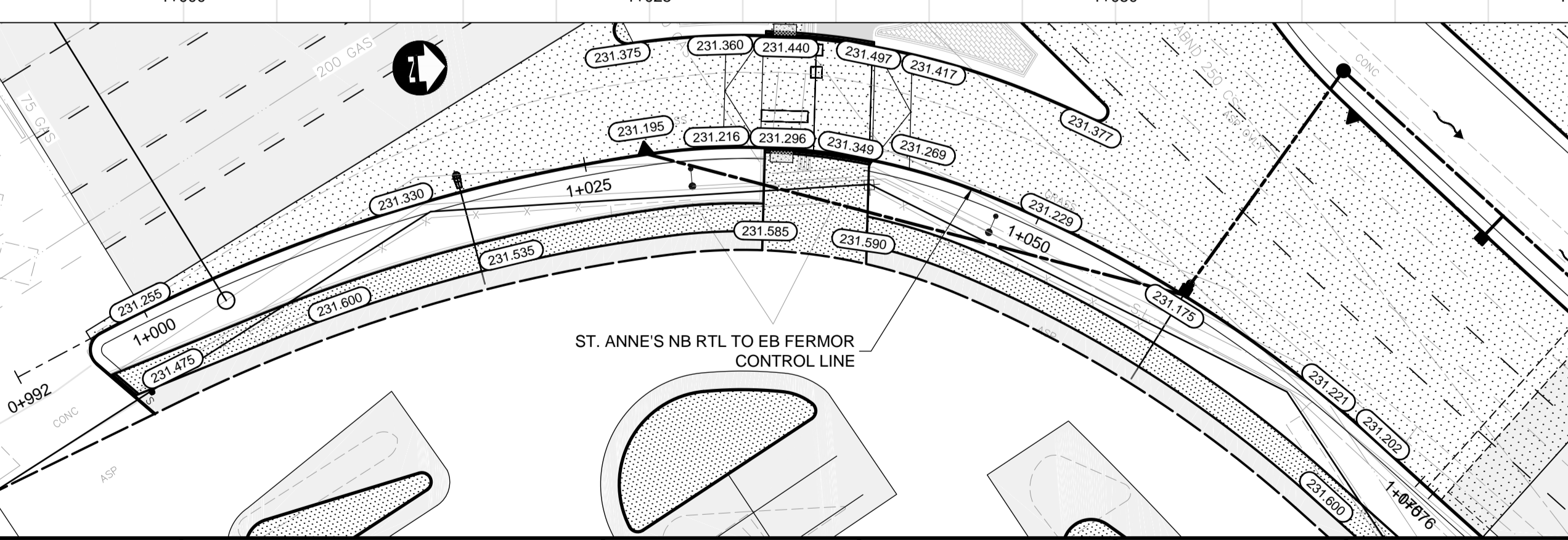
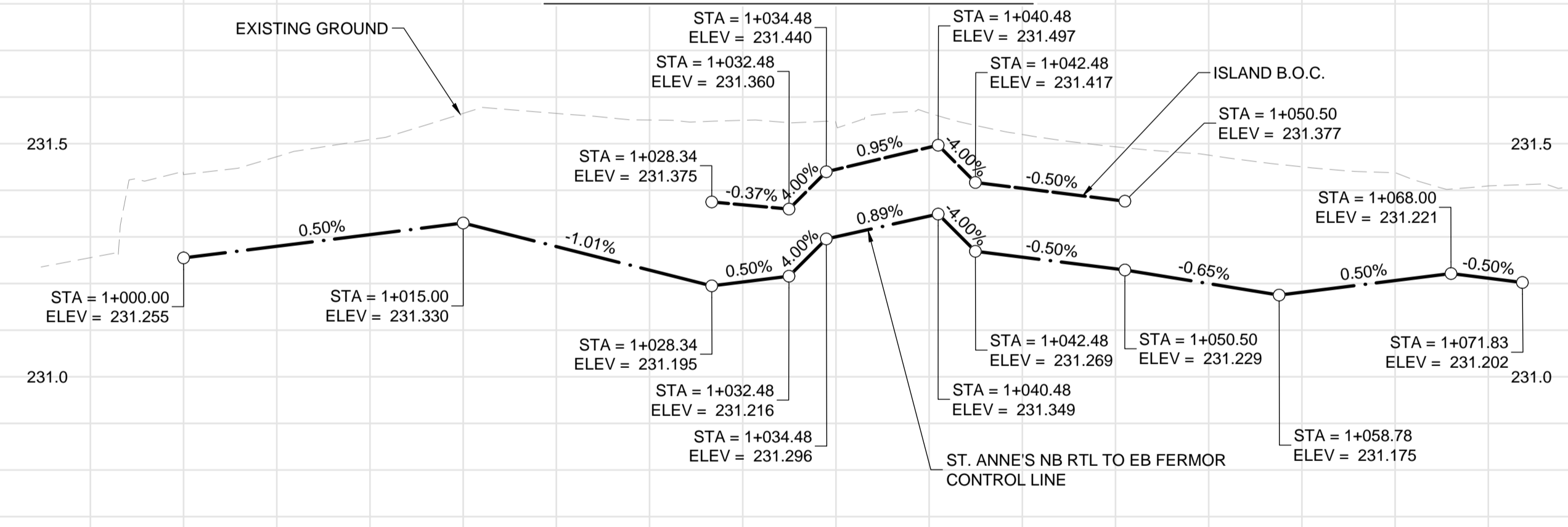


- CONSTRUCTION NOTES:**
- LEGAL PLAN AND UNDERGROUND INFORMATION FROM CITY OF WINNIPEG LBIS. CONTRACTOR TO VERIFY ALL UNDERGROUNDS IN THE FIELD.
 - ISOLATE MISCELLANEOUS ITEMS IN NEW CONCRETE WORKS AS PER SD-228C.
 - CONTRACTOR TO TAKE PRECAUTIONARY STEPS TO AVOID DAMAGE FROM CONSTRUCTION ACTIVITIES TO TREES WITHIN THE LIMIT OF CONSTRUCTION.
 - CONTRACTOR TO TAKE PRECAUTIONARY STEPS TO CONTROL EROSION BY USING STRAW WATTLES, AS REQUIRED.
 - LOCATION OF ALL EXISTING SERVICES TO BE CONFIRMED IN THE FIELD BY CONTRACTOR. CONTRACTOR SHALL CONFIRM EXISTING LEAD INVERT ELEVATIONS PRIOR TO INSTALLATION.
 - ADJUST MH AND CB RIMS TO NEW GRADES.
 - REFER TO LAND DRAINAGE DRAWINGS FOR ADDITIONAL UNDERGROUND INFORMATION REGARDING MANHOLES, CATCH BASINS, CULVERT ELEVATIONS, AND OUTLET DETAILS.
 - REFER TO LANDSCAPE DRAWINGS FOR DETAILS ON ISLANDS, AND ADDITIONAL SURFACE WORK DETAILS.

EB FERMOR RIGHT TURN TO SB ST. ANNE'S



NB ST. ANNE'S RIGHT TURN TO EB FERMOR



METRIC

WHOLE NUMBERS INDICATE MILLIMETRES
DECIMALIZED NUMBERS INDICATE METRES

WARNING

- IF POWER EQUIPMENT OR EXPLOSIVES ARE TO BE USED FOR EXCAVATION ON THIS PROJECT THE CONTRACTOR MUST:
- NOTIFY THE GAS COMPANY OF THE PROPOSED LOCATION OF EXCAVATION.
 - TAKE PRECAUTION TO AVOID DAMAGE TO GAS COMPANY INSTALLATIONS SEE PROVINCIAL REGULATION 210/72 FOR DETAILS.
 - OBTAIN EXCAVATION PERMITS PRIOR TO CONSTRUCTION.

APEGM
Certificate of Authorization
Dillon Consulting Limited (MB)
No. 1789 Date: 18/02/09

THE CITY OF WINNIPEG
PUBLIC WORKS DEPARTMENT
Winnipeg
FERMOR AVENUE BRIDGE OVER SEINE RIVER
BRIDGE REHABILITATION, PEDESTRIAN-CYCLIST UNDERPASS STRUCTURE AND ROADWORKS FROM ST. ANNE'S ROAD TO ARCHIBALD STREET
CITY DRAWING NUMBER: P-3489-2017-CT-
SHEET 036 OF 067
CONSULTANT DRAWING NUMBER: CT-036

G:\CAD\175932\Drawings\Roadworks\CON-CT-PLAN-PROFILE-TURNANES.dwg

150 WM	WATERMAIN	150 WM	CONCRETE	150 WM	WATERMAIN	150 WM	WATERMAIN
300 LBS	HYDRANT	300 LBS	ASPHALT	300 LBS	LAND DRAINAGE SEWER	300 LBS	LAND DRAINAGE SEWER
250 WWS	VALVE	250 WWS	PLANING	250 WWS	WASTE WATER SEWER	250 WWS	WASTE WATER SEWER
MANHOLE	MANHOLE	MANHOLE	SIDEWALK	MANHOLE	HYDRANT	MANHOLE	HYDRANT
CATCH BASIN	CATCH BASIN	CATCH BASIN	PAVING STONES	CATCH BASIN	VALVE	CATCH BASIN	VALVE
CURB INLET	CURB INLET	CURB INLET	PARTIAL DEPTH REPAIR	CURB INLET	Q PROFILE	CURB INLET	Q PROFILE
300 LBS	LAND DRAINAGE SEWER	300 LBS	PROPERTY LINE	300 LBS	NORTH/WEST GUTTER	300 LBS	NORTH/WEST GUTTER
250 WWS	WASTE WATER SEWER	250 WWS	DRAINAGE ARROW	250 WWS	SOUTH/EAST GUTTER	250 WWS	SOUTH/EAST GUTTER
HYDRO	HYDRO	HYDRO	CURB RAMP (SD-229C)	HYDRO	NORTH/WEST DITCH	HYDRO	NORTH/WEST DITCH
M.T.S.	M.T.S.	M.T.S.	DETECTABLE WARNING	M.T.S.	SOUTH/EAST DITCH	M.T.S.	SOUTH/EAST DITCH
100 GAS	GAS	100 GAS	SURFACE TILE (SD-229AA)	100 GAS		100 GAS	
EXISTING	LEGEND-PLAN	PROPOSED	EXISTING	LEGEND-PLAN	PROPOSED	EXISTING	LEGEND-PROFILE
							PROPOSED

UNDERGROUND STRUCTURES

SUPV. U/G STRUCTURES	DATE

LOCATION OF UNDERGROUND STRUCTURES AS SHOWN ARE BASED ON THE BEST INFORMATION AVAILABLE BUT NO GUARANTEE IS GIVEN THAT ALL EXISTING UTILITIES ARE SHOWN OR THAT THE GIVEN LOCATIONS ARE EXACT. CONFIRMATION OF EXISTENCE AND EXACT LOCATION OF ALL SERVICES MUST BE OBTAINED FROM THE INDIVIDUAL UTILITIES BEFORE PROCEEDING WITH CONSTRUCTION.

B.M. ELEV.	SEE SHEET CT-001 FOR CONTROL POINT INFORMATION

DESIGNED BY	PMW
DRAWN BY	PMW
CHECKED BY	JNC
APPROVED BY	JNC
HOR. SCALE	1:250
VERTICAL	1:10
ISSUED FOR TENDER	18/02/09 JNC
NO. REVISIONS	DATE BY

DILLON CONSULTING

ENGINEER'S SEAL
PROVINCE OF MANITOBA
REGISTERED PROFESSIONAL ENGINEER
J.N. CRANG

RELEASED FOR CONSTRUCTION
DATE

CONSULTANT PROJECT NUMBER
17-5932