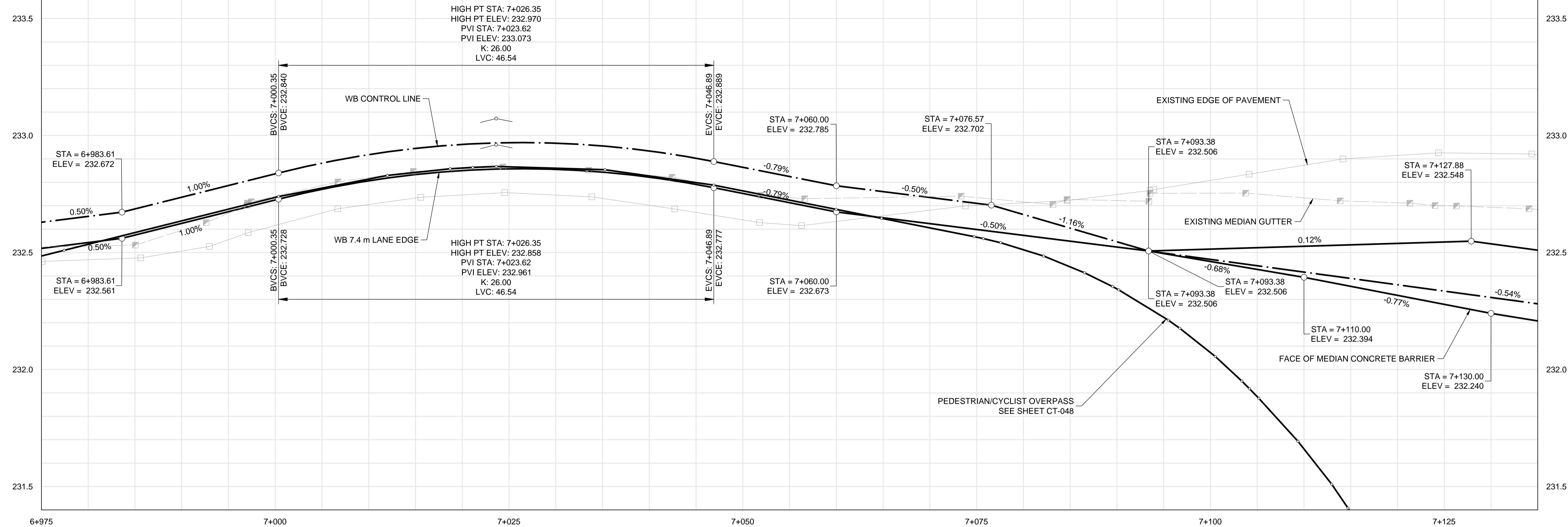


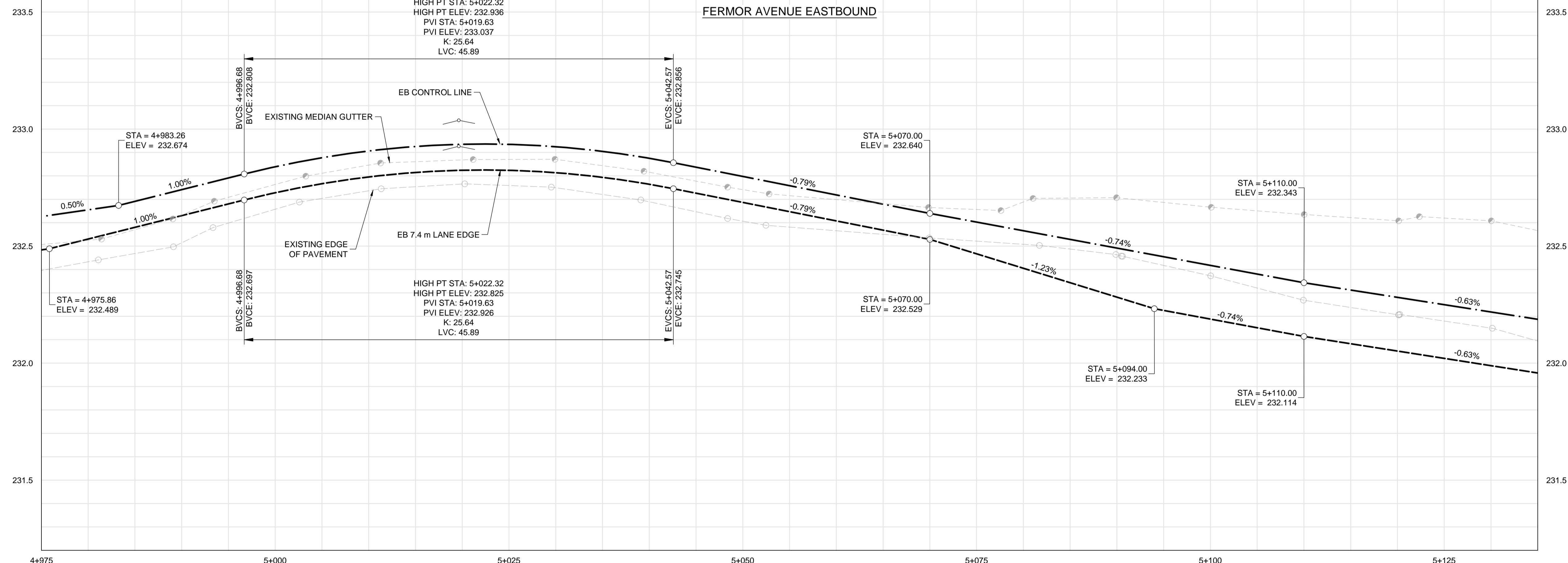
FERMOR AVENUE WESTBOUND



CONSTRUCTION NOTES:

- LEGAL PLAN AND UNDERGROUND INFORMATION FROM CITY OF WINNIPEG LBIS. CONTRACTOR TO VERIFY ALL UNDERGROUNDS IN THE FIELD.
- ISOLATE MISCELLANEOUS ITEMS IN NEW CONCRETE WORKS AS PER SD-228C.
- CONTRACTOR TO TAKE PRECAUTIONARY STEPS TO AVOID DAMAGE FROM CONSTRUCTION ACTIVITIES TO TREES WITHIN THE LIMIT OF CONSTRUCTION.
- CONTRACTOR TO TAKE PRECAUTIONARY STEPS TO CONTROL EROSION BY USING STRAW WATTLES, AS REQUIRED.
- LOCATION OF ALL EXISTING SERVICES TO BE CONFIRMED IN THE FIELD BY CONTRACTOR.
- CONTRACTOR SHALL CONFIRM EXISTING LEAD INVERT ELEVATIONS PRIOR TO INSTALLATION.
- ADJUST MH AND CB RIMS TO NEW GRADES.
- REFER TO LAND DRAINAGE DRAWINGS FOR ADDITIONAL UNDERGROUND INFORMATION REGARDING MANHOLES, CATCH BASINS, CULVERT ELEVATIONS, AND OUTLET DETAILS.
- REFER TO LANDSCAPE DRAWINGS FOR DETAILS ON ISLANDS, AND ADDITIONAL SURFACE WORK DETAILS.

FERMOR AVENUE EASTBOUND



METRIC

WHOLE NUMBERS INDICATE MILLIMETRES
DECIMALIZED NUMBERS INDICATE METRES

WARNING

IF POWER EQUIPMENT OR EXPLOSIVES ARE TO BE USED FOR EXCAVATION ON THIS PROJECT THE CONTRACTOR MUST:

- NOTIFY THE GAS COMPANY OF THE PROPOSED LOCATION OF EXCAVATION.
- TAKE PRECAUTION TO AVOID DAMAGE TO GAS COMPANY INSTALLATIONS SEE PROVINCIAL REGULATION 210/72 FOR DETAILS.
- OBTAIN EXCAVATION PERMITS PRIOR TO CONSTRUCTION.



THE CITY OF WINNIPEG
PUBLIC WORKS DEPARTMENT

FERMOR AVENUE BRIDGE OVER SEINE RIVER
BRIDGE REHABILITATION, PEDESTRIAN-CYCLIST UNDERPASS STRUCTURE
AND ROADWORKS FROM ST. ANNE'S ROAD TO ARCHIBALD STREET

FERMOR AVENUE - STA. 4+975
TO 5+135 (PROFILE)

CITY DRAWING NUMBER: P-3489-2017-CT-025
SHEET OF: 025 OF 067
CONSULTANT DRAWING NUMBER: CT-025

150 WM	WATERMAIN	150 WM	CONCRETE	150 WM	WATERMAIN
300 LDS	HYDRANT	300 LDS	ASPHALT	300 LDS	LAND DRAINAGE SEWER
300 WWS	VALVE	300 WWS	PLANING	250 WWS	WASTE WATER SEWER
MANHOLE	MANHOLE	MANHOLE	SIDEWALK	HYDRANT	HYDRANT
CATCH BASIN	CATCH BASIN	CATCH BASIN	PAVING STONES	VALVE	VALVE
CURB INLET	CURB INLET	CURB INLET	PARTIAL DEPTH REPAIR	Q PROFILE	Q PROFILE
300 LDS	LAND DRAINAGE SEWER	300 LDS	PROPERTY LINE	NORTH/WEST GUTTER	NORTH/WEST GUTTER
250 WWS	WASTE WATER SEWER	250 WWS	DRAINAGE ARROW	SOUTH/EAST GUTTER	SOUTH/EAST GUTTER
HYDRO	HYDRO	HYDRO	CURB RAMP (SD-229C)	NORTH/WEST DITCH	NORTH/WEST DITCH
M.T.S.	M.T.S.	M.T.S.	DETECTABLE WARNING	SOUTH/EAST DITCH	SOUTH/EAST DITCH
100 GAS	GAS	100 GAS	SURFACE TILE (SD-229AA)		
EXISTING	LEGEND-PLAN	PROPOSED	EXISTING	LEGEND-PROFILE	PROPOSED

UNDERGROUND STRUCTURES

SUPV. U/G STRUCTURES DATE

LOCATION OF UNDERGROUND STRUCTURES AS SHOWN ARE BASED ON THE BEST INFORMATION AVAILABLE, BUT NO GUARANTEE IS GIVEN THAT ALL EXISTING UTILITIES ARE SHOWN OR THAT THE GIVEN LOCATIONS ARE EXACT. CONFIRMATION OF EXISTENCE AND EXACT LOCATION OF ALL SERVICES MUST BE OBTAINED FROM THE INDIVIDUAL UTILITIES BEFORE PROCEEDING WITH CONSTRUCTION.

B.M. ELEV.	SEE SHEET CT-001 FOR CONTROL POINT INFORMATION
DESIGNED BY	JAT
DRAWN BY	TJH
CHECKED BY	JNC
APPROVED BY	JNC
HOR. SCALE	1:250
VERTICAL	1:10
RELEASED FOR CONSTRUCTION	DATE
CONSULTANT PROJECT NUMBER	17-5932

NO.	REVISIONS	DATE	BY
0	ISSUED FOR TENDER	18/02/09	JNC

DILLON CONSULTING

REGISTERED PROFESSIONAL ENGINEER

ENGINEER'S SEAL

PROVINCE OF MANITOBA

REGISTERED PROFESSIONAL ENGINEER

J.N. CRANG

CONSULTANT PROJECT NUMBER

17-5932

G:\CAD\175932\Drawings\Roadworks\Contract\175932-CON-CT-PLAN-PROFILE-FERMOR.dwg